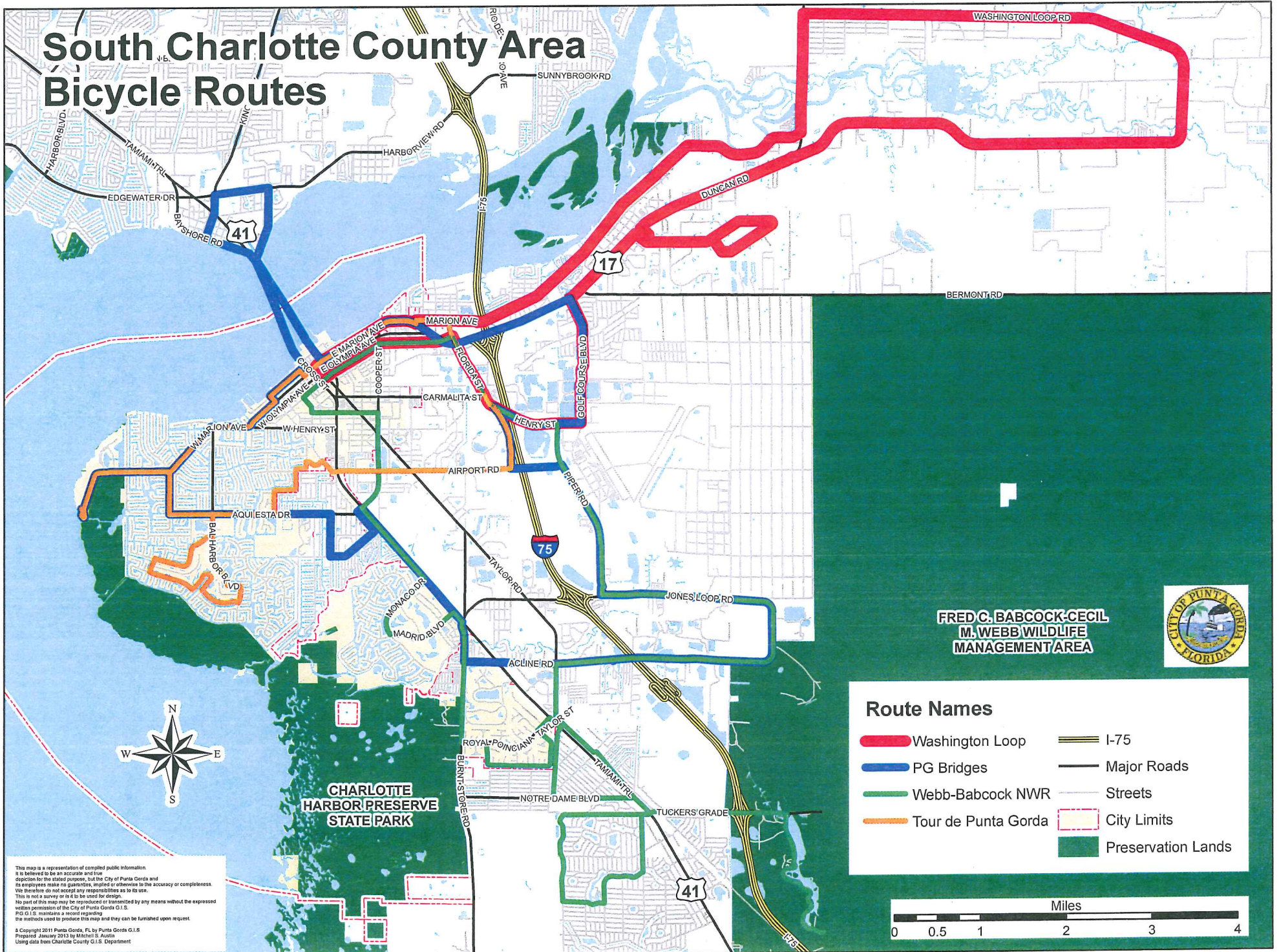


# South Charlotte County Area Bicycle Routes



This map is a representation of compiled public information. It is believed to be an accurate and true depiction for the stated purpose, but the City of Punta Gorda and its employees make no guarantee, implied or otherwise to the accuracy or completeness. We therefore do not accept any responsibilities as to its use. This is not a survey or is to be used for design. No part of this map may be reproduced or transmitted by any means without the expressed written permission of the City of Punta Gorda G.I.S. PG G.I.S. maintains a record regarding the methods used to produce this map and they can be furnished upon request.

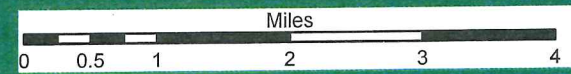
© Copyright 2011 Punta Gorda, FL by Punta Gorda G.I.S.  
 Prepared January 2013 by Mitchell S. Austin  
 Using data from Charlotte County G.I.S. Department

**FRED C. BABCOCK-CECIL  
 M. WEBB WILDLIFE  
 MANAGEMENT AREA**



## Route Names

- █ Washington Loop
- █ PG Bridges
- █ Webb-Babcock NWR
- █ Tour de Punta Gorda
- I-75
- Major Roads
- Streets
- City Limits
- Preservation Lands





 **15 mi**   
**Tour de Punta Gorda**