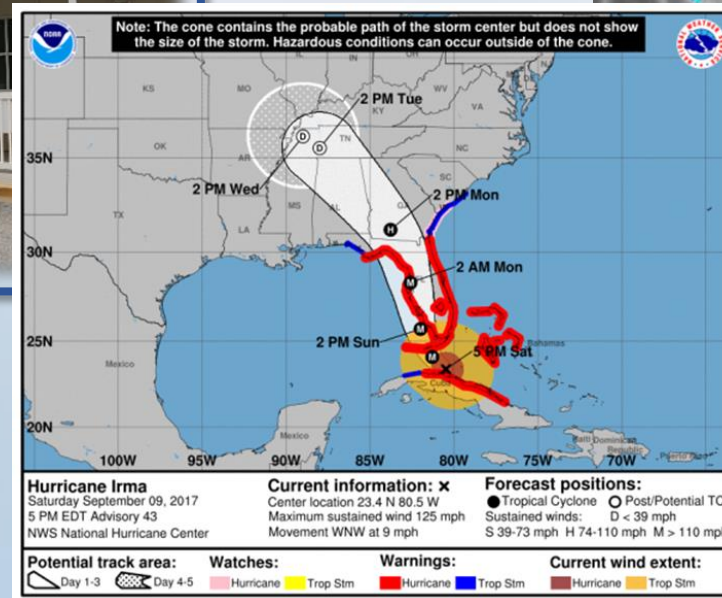
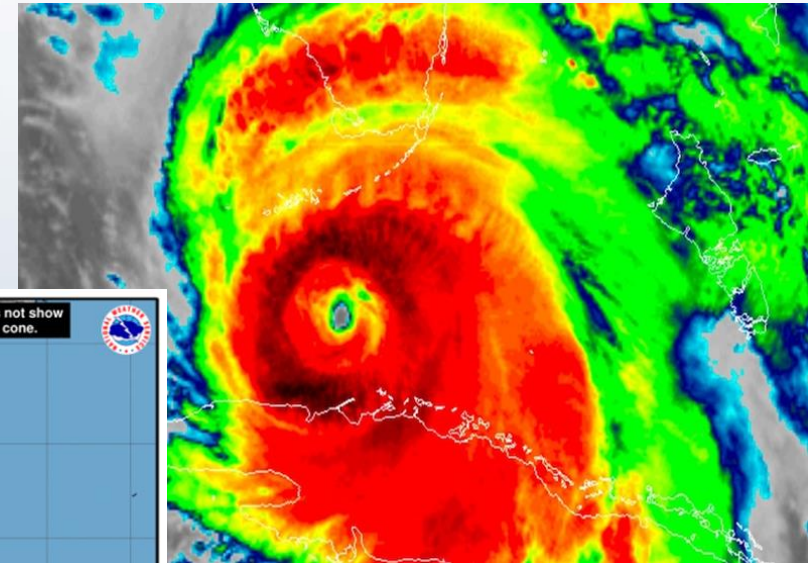


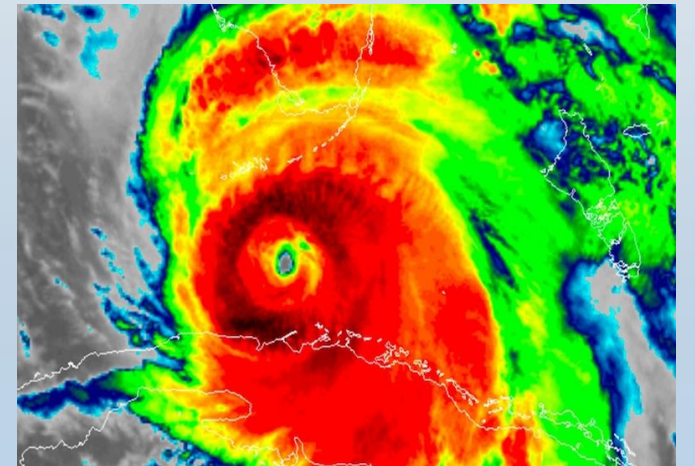
Hurricane Irma Sheltering



Hurricane Irma

▪ By the Numbers

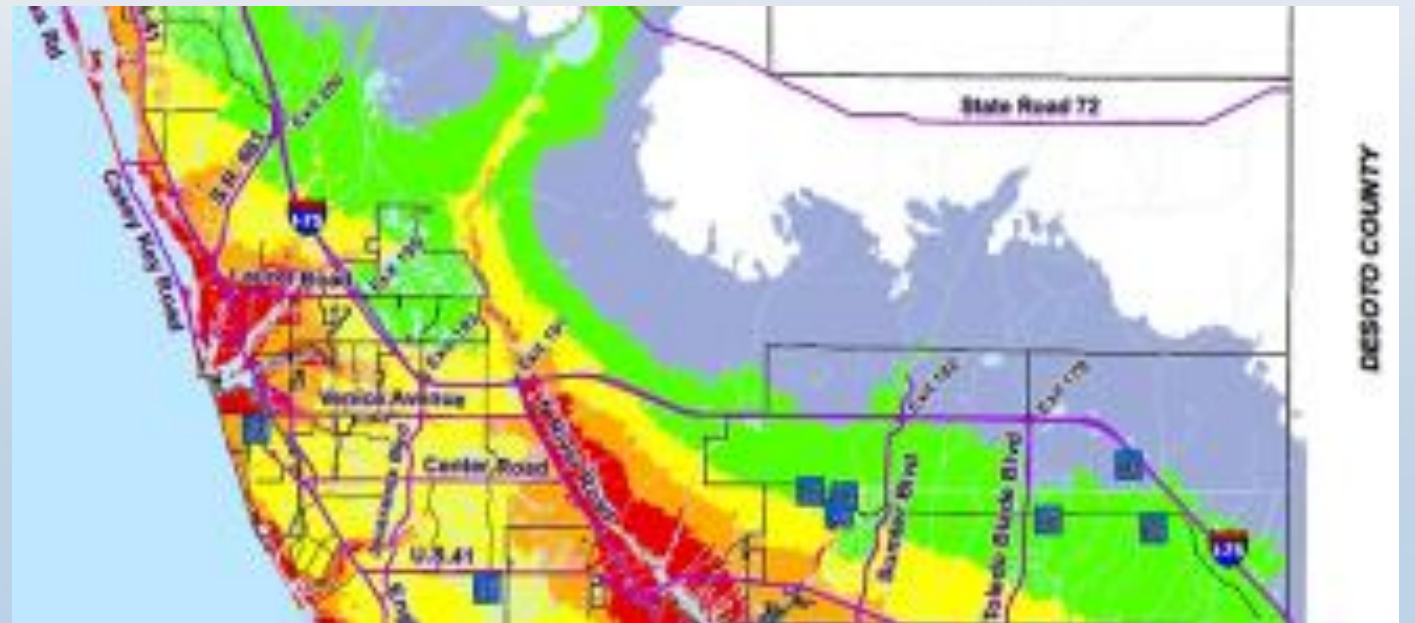
- 10 General Population Shelters Opened
- 3 Medically Dependent Shelters Opened
- Almost 19,000 residents in General Shelters
- Almost 1,600 residents in Medical Shelters
- Total Population Sheltered: Over 20,000
- 2,200 pets in all shelters



Hurricane Irma Sheltering

North Port Area Shelters

- North Port High School
- Heron Creek Middle School
- Woodland Middle School
- (2) Special Needs Shelters



After Action Review Process

- **Nov. 17:**
 - Foundations After Action Review kickoff meeting
- **December:**
 - Data collection, stakeholder meetings and analysis
- **January:**
 - Jan. 10: Council of Governments meeting
 - Jan. 19: Convocation of Governments Sarasota County Schools
- **February 9:**
 - Facilitated joint meeting with peer reviewers
- **March 14:**
 - Final AAR submitted to the Board of County Commissioners

Recommendations

Recommendation 8.7.1: Develop a Memorandum of Understanding/Memorandum of Agreement (MOU/MOA) with Charlotte County for housing their residents and medically-dependent individuals in Sarasota County shelters.

Recommendation 8.7.2: Develop a Memorandum of Understanding/Memorandum of Agreement (MOU/MOA) with Charlotte County for support from Charlotte County School District staff and County personnel along with law enforcement for security and fire rescue for emergency medical services.

Next Steps

- Joint County Planning Meetings
- Develop Plans for Implementation
- Initiate MOU/MOA as needed
- Develop & Initiate Training
- Complete Exercise to test plans and ensure preparedness

Questions

