



Risk **MAP**

Risk **M**apping

Risk **A**ssessment

Risk **P**lanning



What is it?

Project undertaken by FEMA

Re-mapping areas subject to coastal inundation

Part of a much wider study

Regulatory and non-regulatory products

Ongoing since 2014



Why Charlotte County?

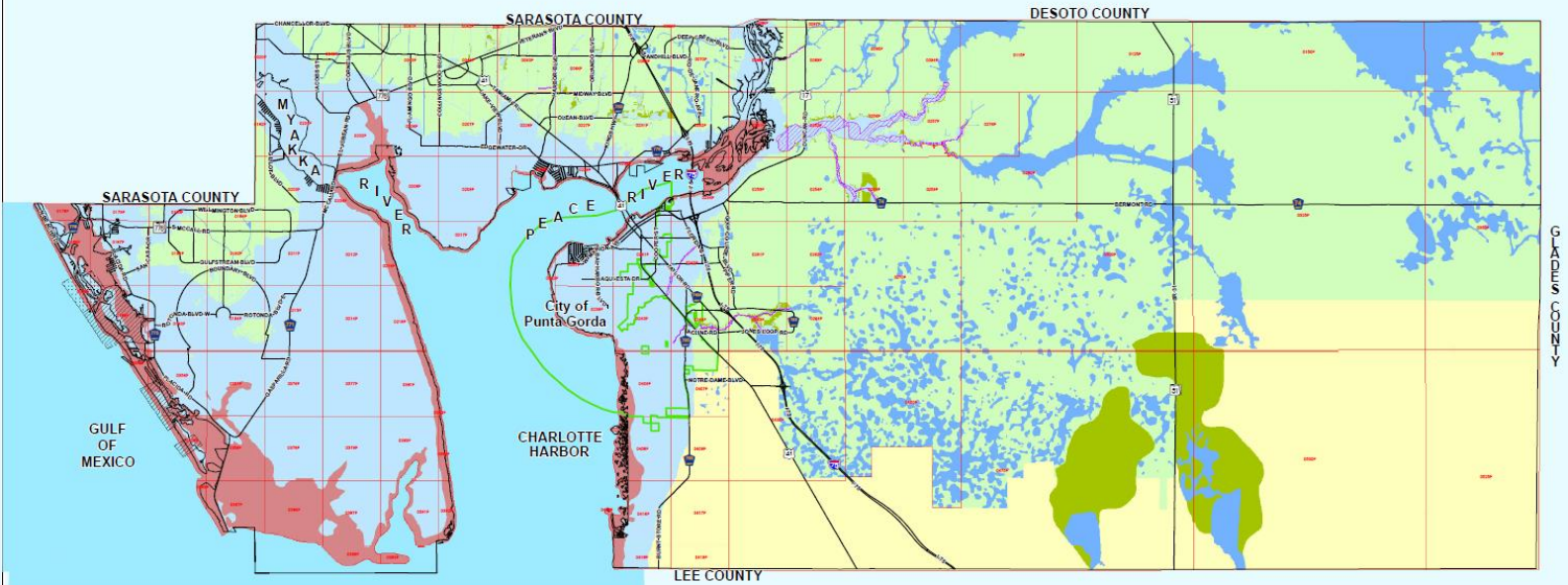
Charlotte County Government

"To exceed expectations in the delivery of public services."

www.CharlotteCountyFL.gov



CHARLOTTE COUNTY Flood Insurance Rate Map (FIRM)



Stateplane Projection
Datum: NAD83
Units: Feet
Source: Community Development,
COGIS, FEMA
Metadata available upon request

- | | | |
|-------------------|---|--|
| FEMA Zones | D Zones | Coastal Barrier Resources System (CBRS) Area |
| VE Zones | X Zones | Otherwise Protected Area (OPA) |
| AE Zones | X Zones (areas of 0.2% annual chance flood) | Floodway Areas in Zone AE |
| A Zones | FIRM Panel | City of Punta Gorda |



This map is a representation of compiled public information. It is believed to be an accurate and true depiction for the stated purpose, but Charlotte County and its employees make no guarantee, implied or otherwise, to the accuracy, or completeness. We therefore do not accept any responsibility as to its use. This is not a survey or to be used for design. Referenced dimensions are for informational purposes only and may have been rounded to the nearest tenth. For precise dimensions, please refer to recorded plans and related documents.

© Copyright 2018 Punta Gorda, FL by Charlotte County
Updated: 02/04/2018 10:11:51 AM '18
M:\Department\GIS\Projects\Mapa_Division\18\FIRM\FIRM.mxd



Common Terminology

NFIP	National Flood Insurance Program
FIRM	Flood Insurance Rate Map
FIS	Flood Insurance Study
BFE	Base Flood Elevation
SFHA	Special Flood Hazard Area
AE Zone	Area subject to slow rising flood water
VE Zone	Area subject to wave action over three feet in height



Common Terminology cont.

Coastal A Zone	Area between the VE Zone and the AE Zone subject to wave action between three feet and 18 inches in height
LiMWA	Line of Moderate Wave Action – the line between the VE zone and the Coastal A Zone – a new line on the FIRM
CCCL	Coastal Construction Control Line – Specific to and controlled by the State of Florida
Bathymetry	Measurement of depth of water in oceans seas or lakes
Topography	Representation of features on land

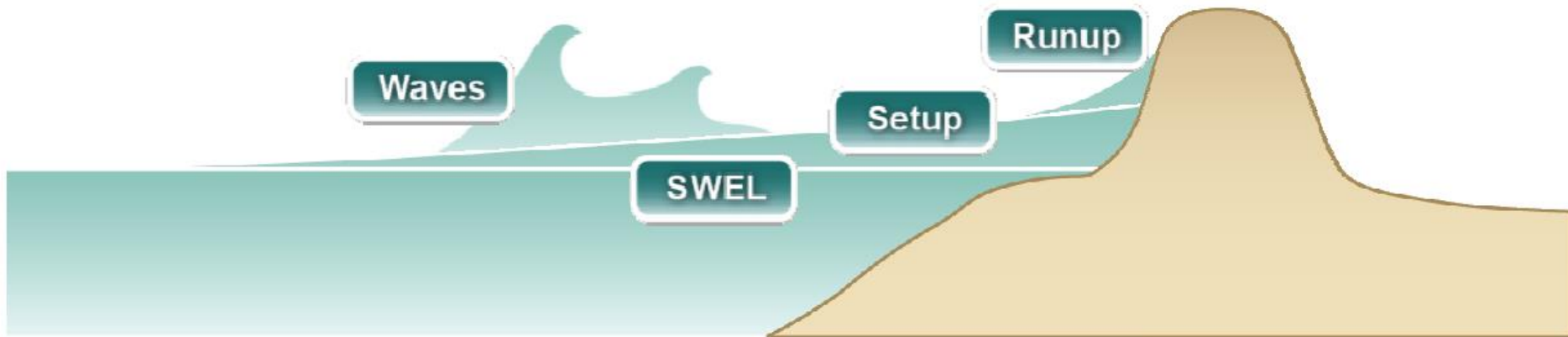


Basic Elements of a Coastal Flood Risk Study

Base Flood Elevation (BFE) on FIRM includes four components:

1. Storm surge stillwater elevation (SWEL)
2. Amount of wave setup
3. Wave height above storm surge elevation
4. Wave runup above storm surge elevation (where present)

} Determined from storm surge model



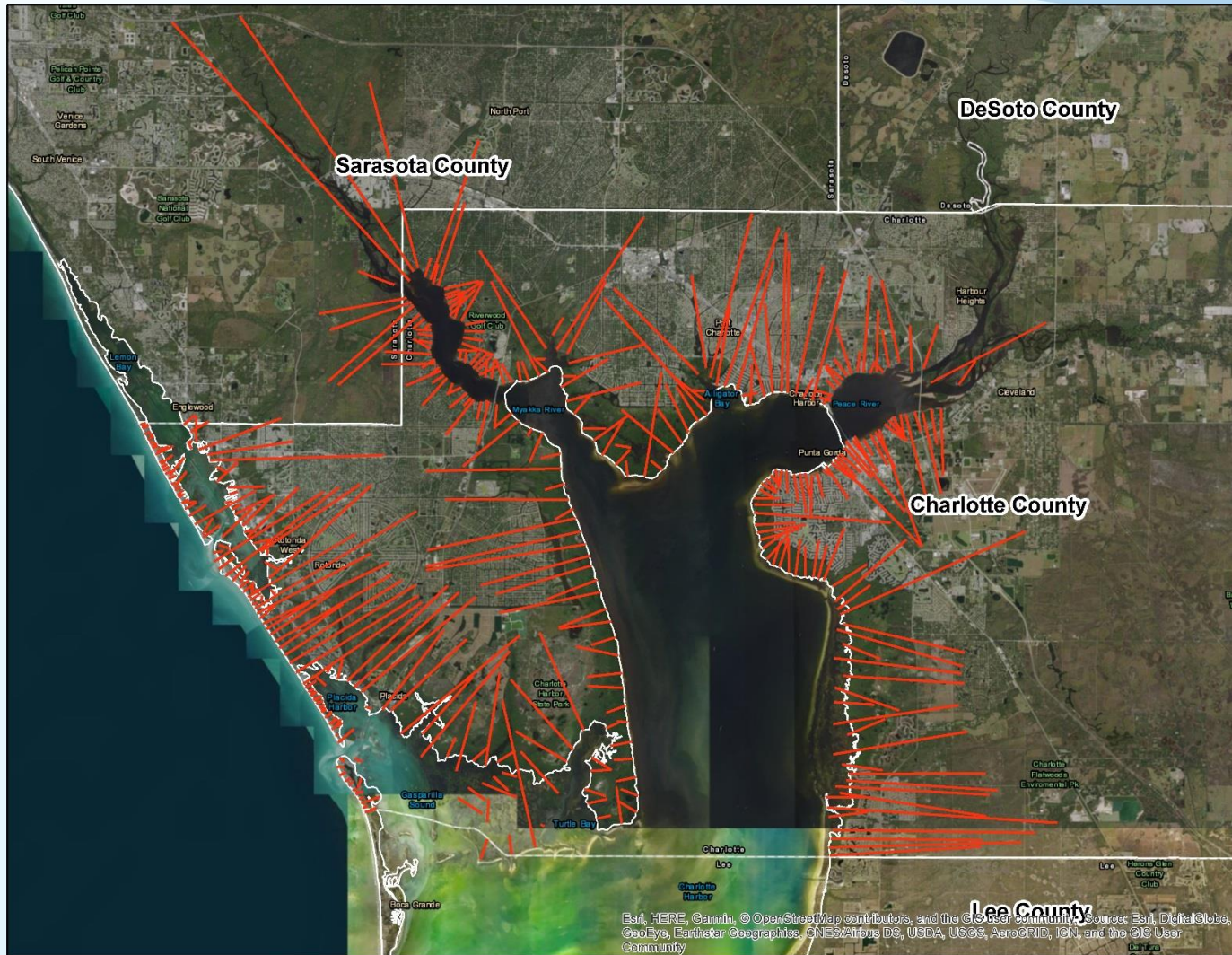


Charlotte County Effective vs. New Coastal Study

Coastal Study Component	Effective Study (2003)	New Study (2018)
Topographic data	USGS 1981 Topographic Maps	FDEM 2007 LiDAR
SWELs	Tide-frequency curves developed for the Gulf of Mexico coastline	2017 West Florida Storm Surge Study
Modeled transects	30	388
Wave setup	N/A	Yes (included with SWEL)
Wave runup	No	Yes
LiMWA	No	Yes



Charlotte County Transects





Verified Elevation Data from us

Charlotte County Government

"To exceed expectations in the delivery of public services."

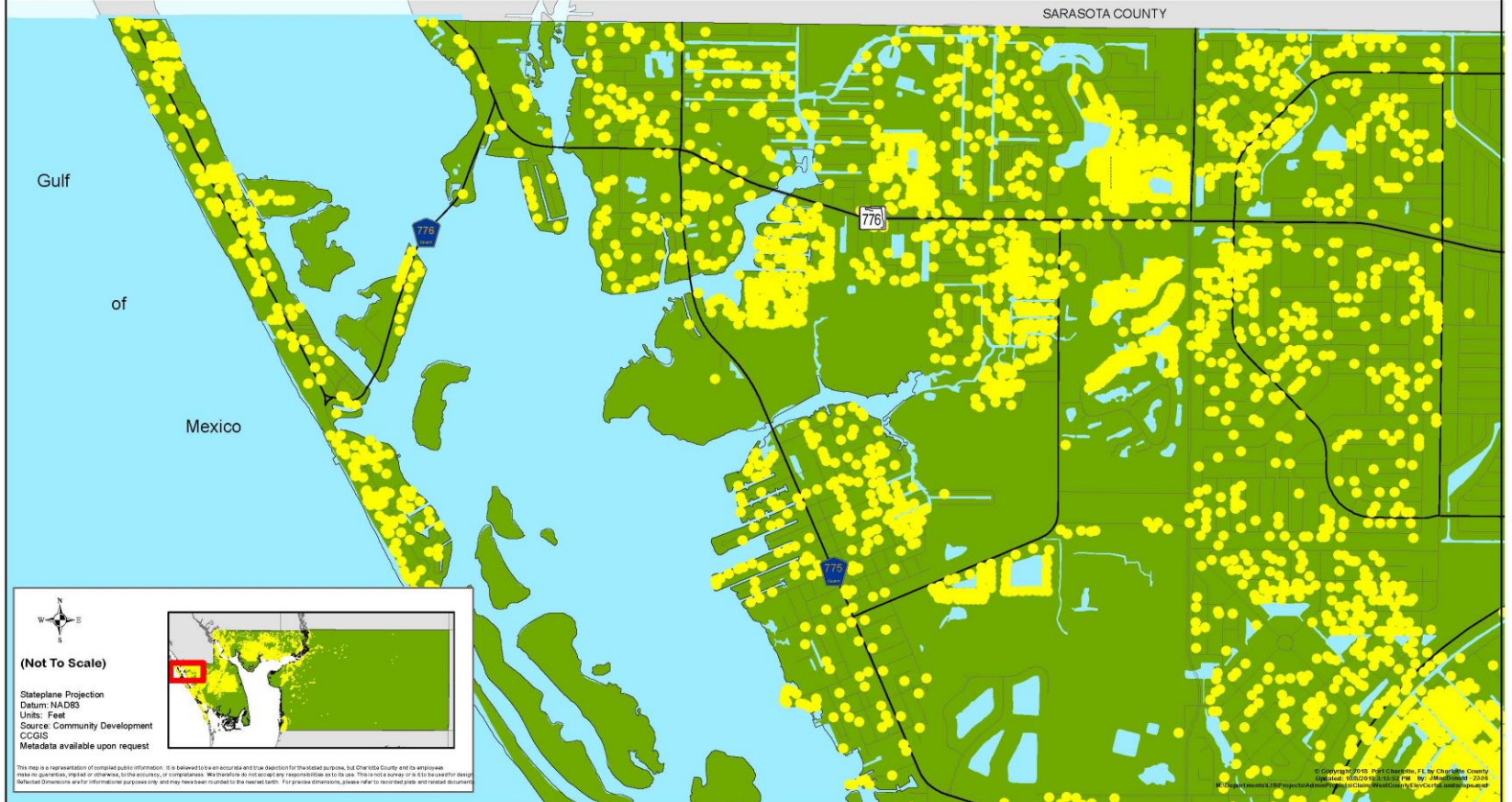
www.CharlotteCountyFL.gov



Community
Development

CHARLOTTE COUNTY West County Area Elevation Certificates

SARASOTA COUNTY



(Not To Scale)

Stateplane Projection
Datum: NAD83
Units: Feet
Source: Community Development
CCGIS
Metadata available upon request

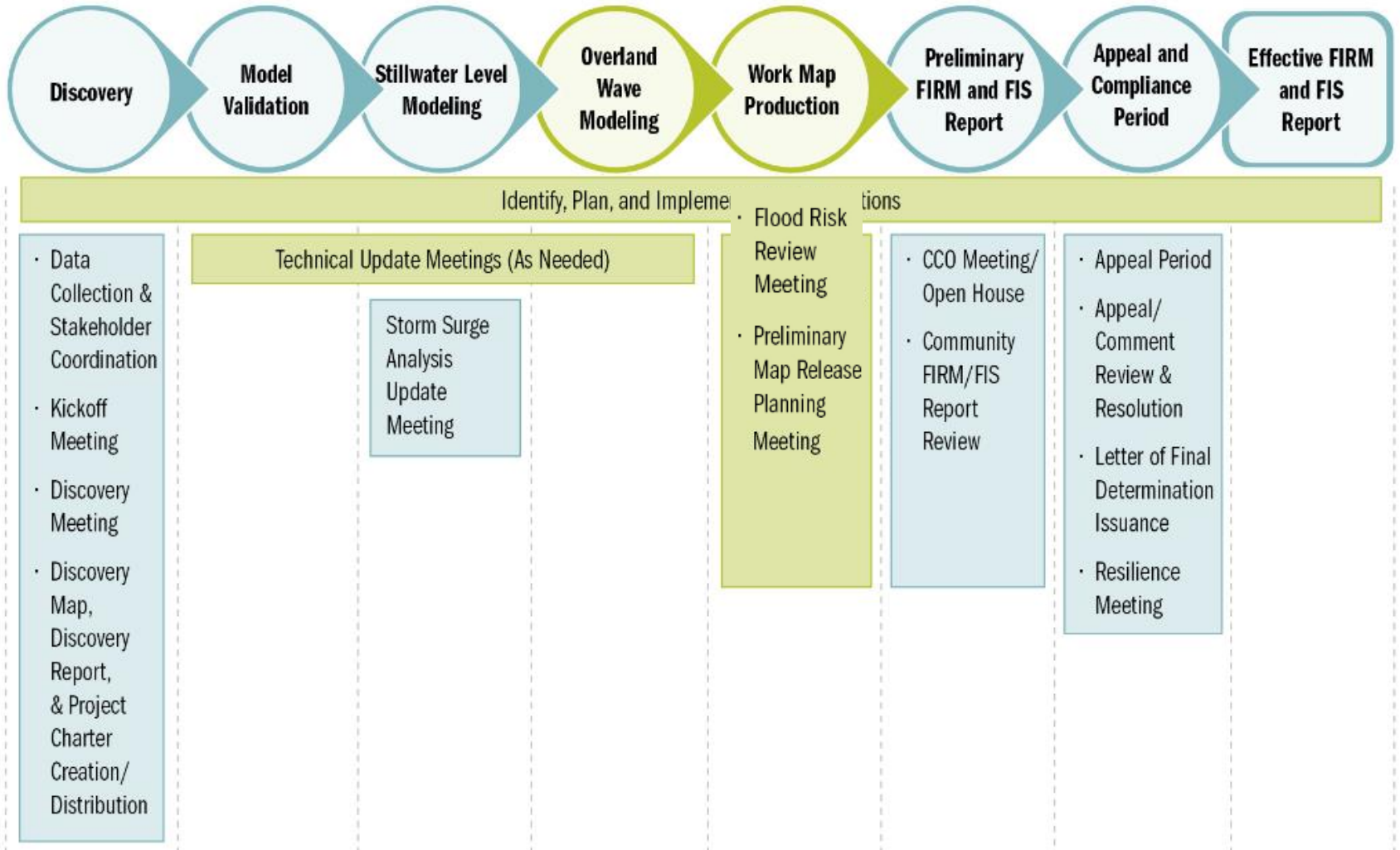


This map is a representation of complex public information. It is believed to be an accurate and true depiction for the stated purpose, but Charlotte County and its employees make no guarantee, express or otherwise, to the accuracy, or completeness. We therefore do not accept any responsibility as to its use. This is not a survey or it to be used for engineering, construction or other informational purposes only, and may have been modified to the latest levels. For precise information, please refer to recorded plans and related documents.

© Copyright 2018, Public Charities, FL by Charlotte County
Applied: 05/02/19, 0:33:02 PM by: JHedberg, 2018
www.charlottecountyfl.gov/CommunityDevelopment/CCGIS/MapServer/charlottecountyfl.gov



Project Timeline





Key Takeaways

Trends

Next steps for us

Next project milestones

Timing