

Utilities Department Quarterly Meeting Update

September 15, 2020



CHARLOTTE COUNTY
FLORIDA

Agenda

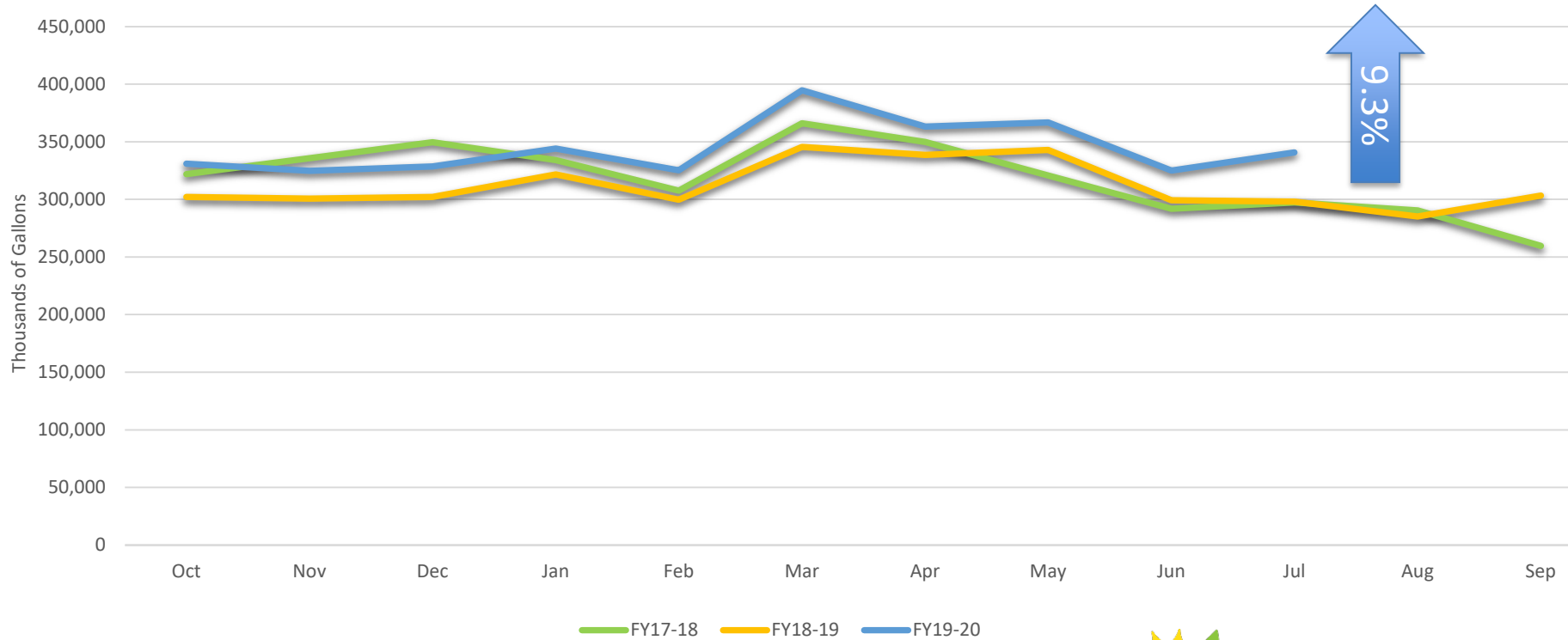
- Key Performance Indicators
- Updates



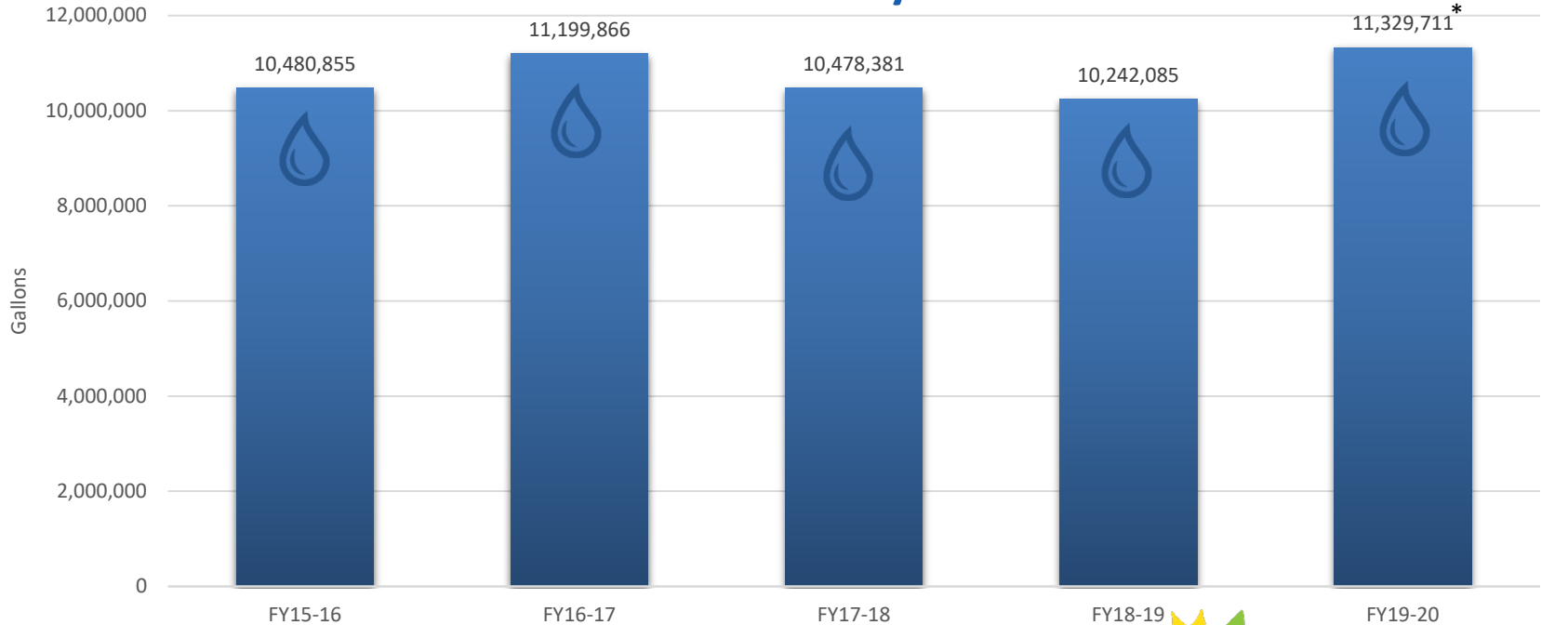
Key Performance Indicators



Monthly Purchases from Water Authority



Avg. Gallons/Day Purchased from Water Authority

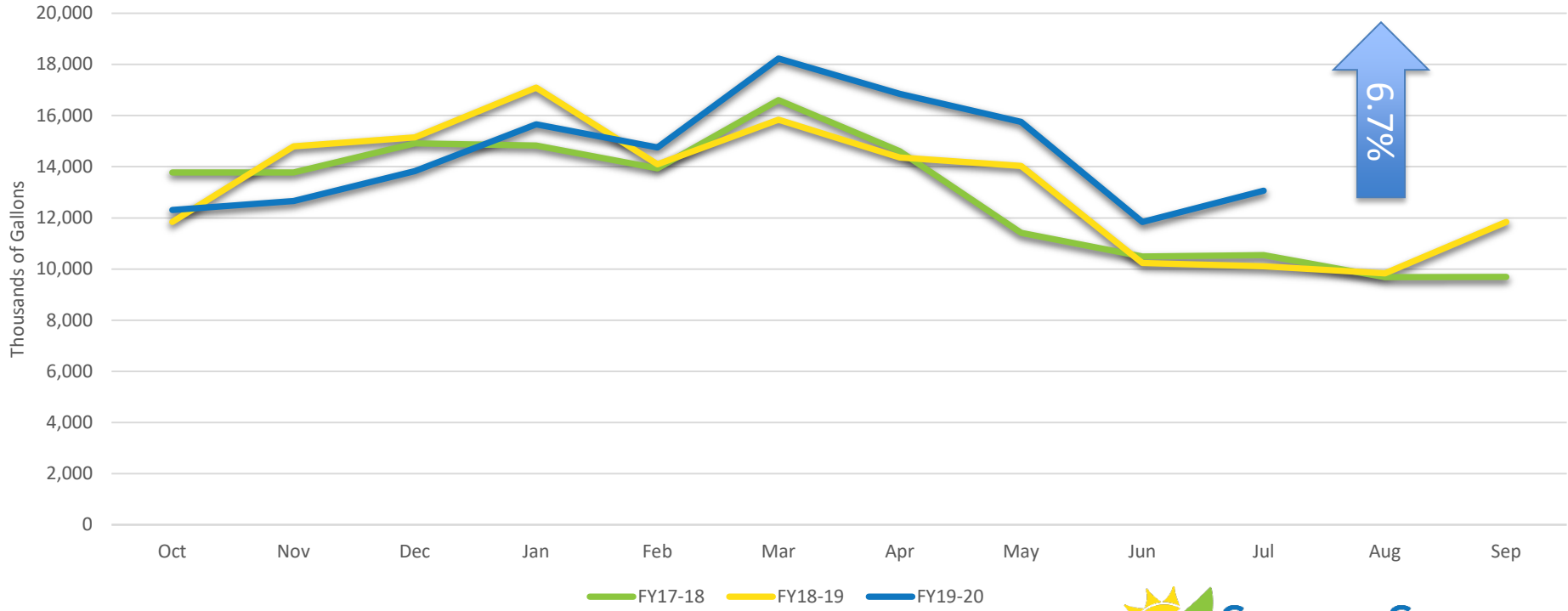


Allocation is 16.1 Million Gallons Per Day

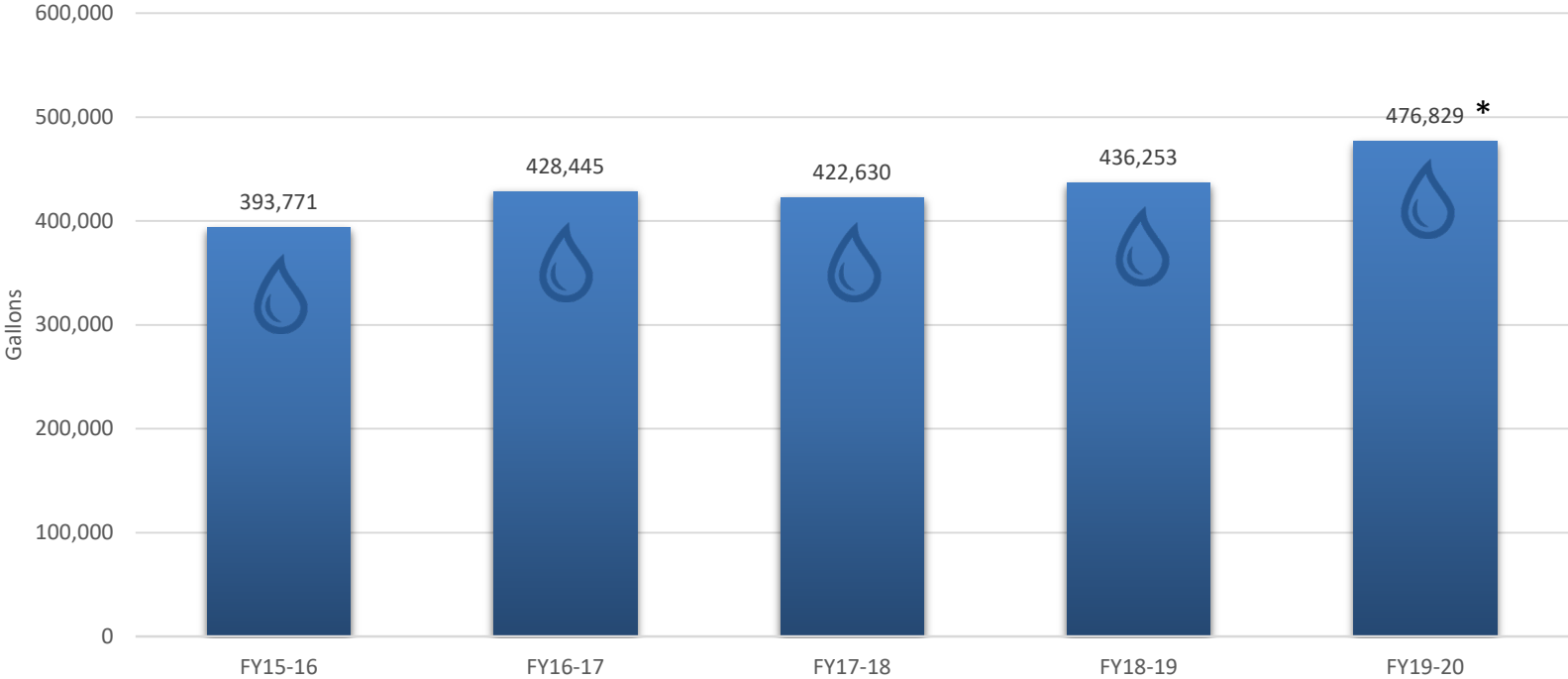
*Oct. – Jul. only



Water Produced at Burnt Store



Burnt Store Avg. Gallons/Day Produced



Max 840,000 Gallons Per Day

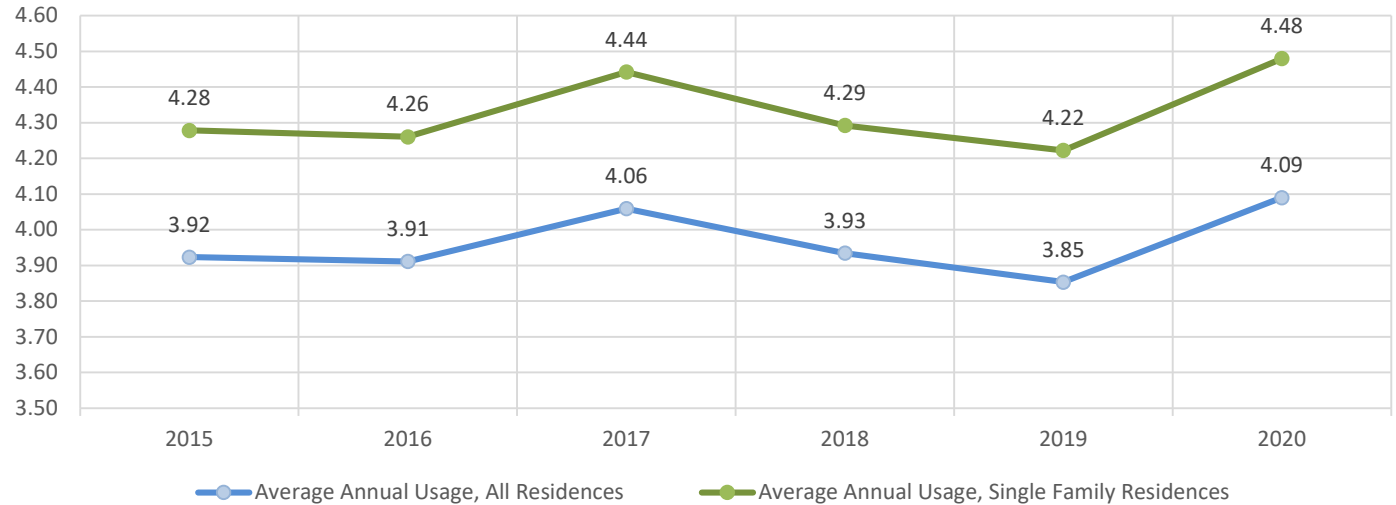
* Oct. – Jul. only



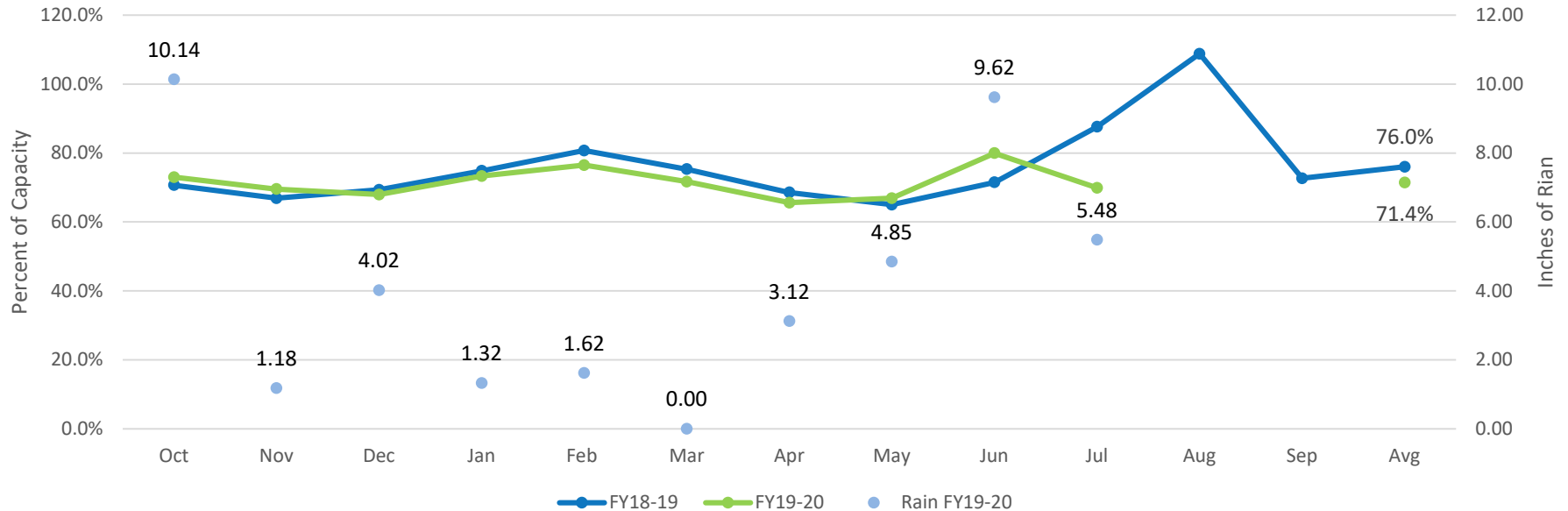
Water Use

- More Customers
- More People Home
 - Home School
 - Work from Home
- Abnormally dry
 - Irrigation
- Single family +260 gal (6.2%)
- All residence +240 gal (6.2%)

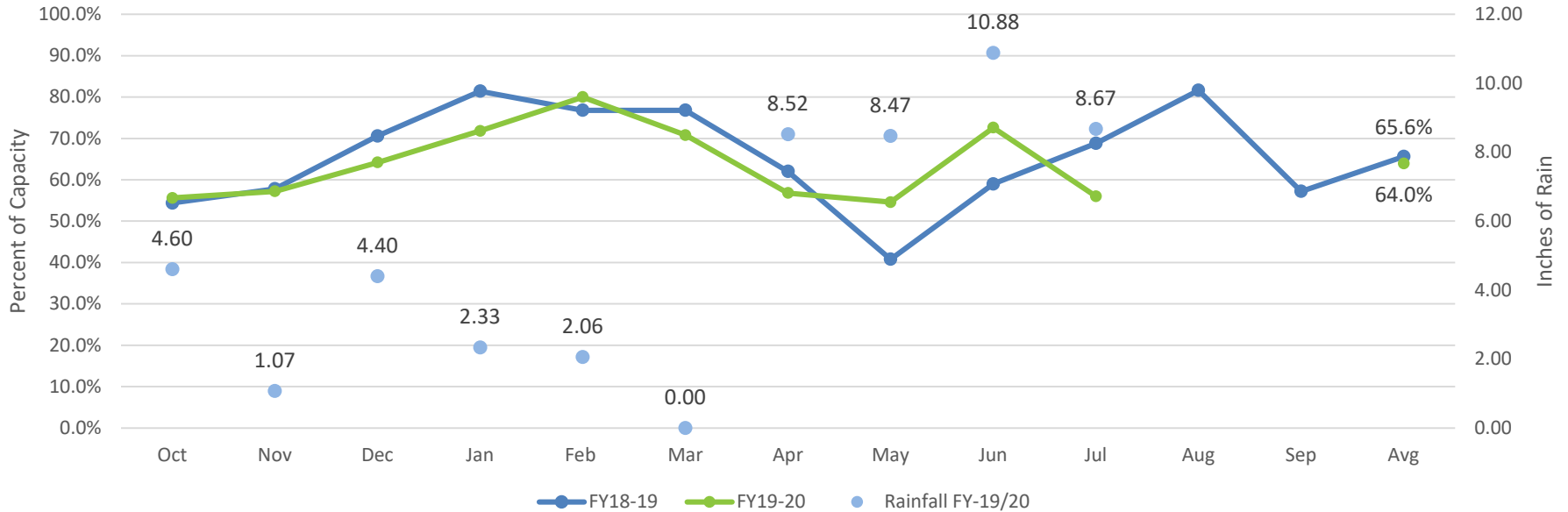
Per Household Use
2015-2020 (July 31, 2020)
In Thousands of Gallons



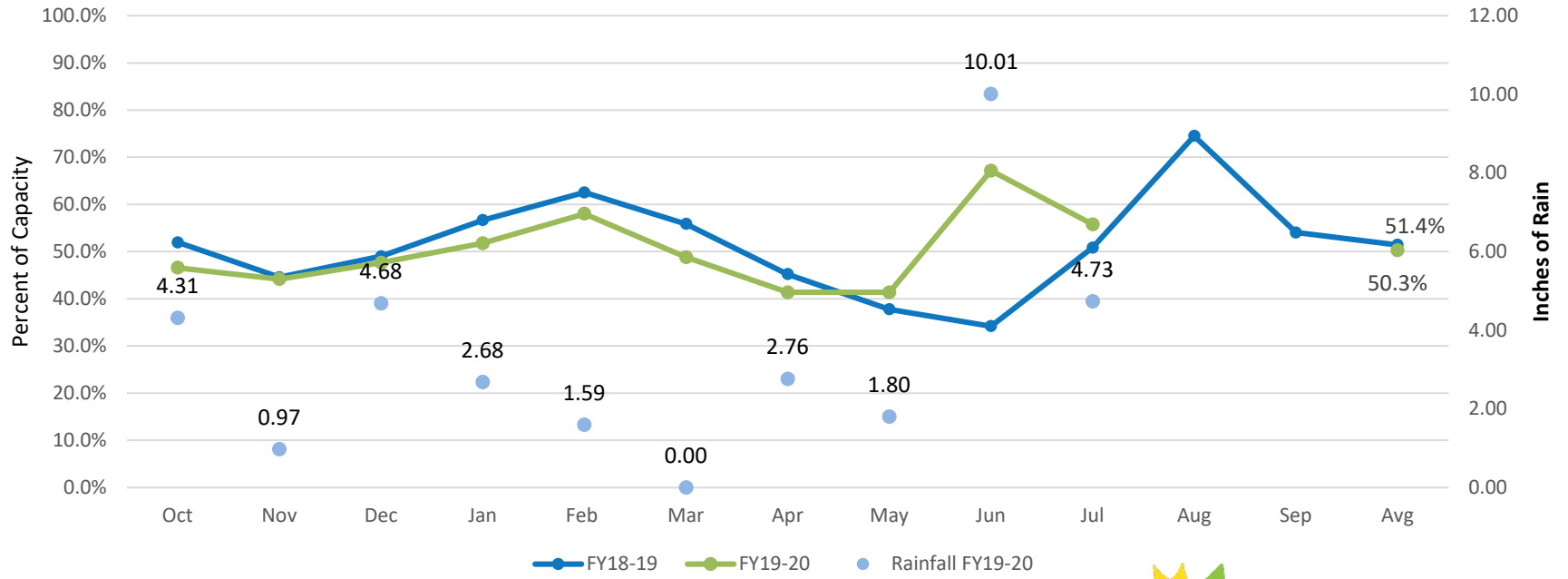
East Port Water Reclamation Facility Percent of Capacity



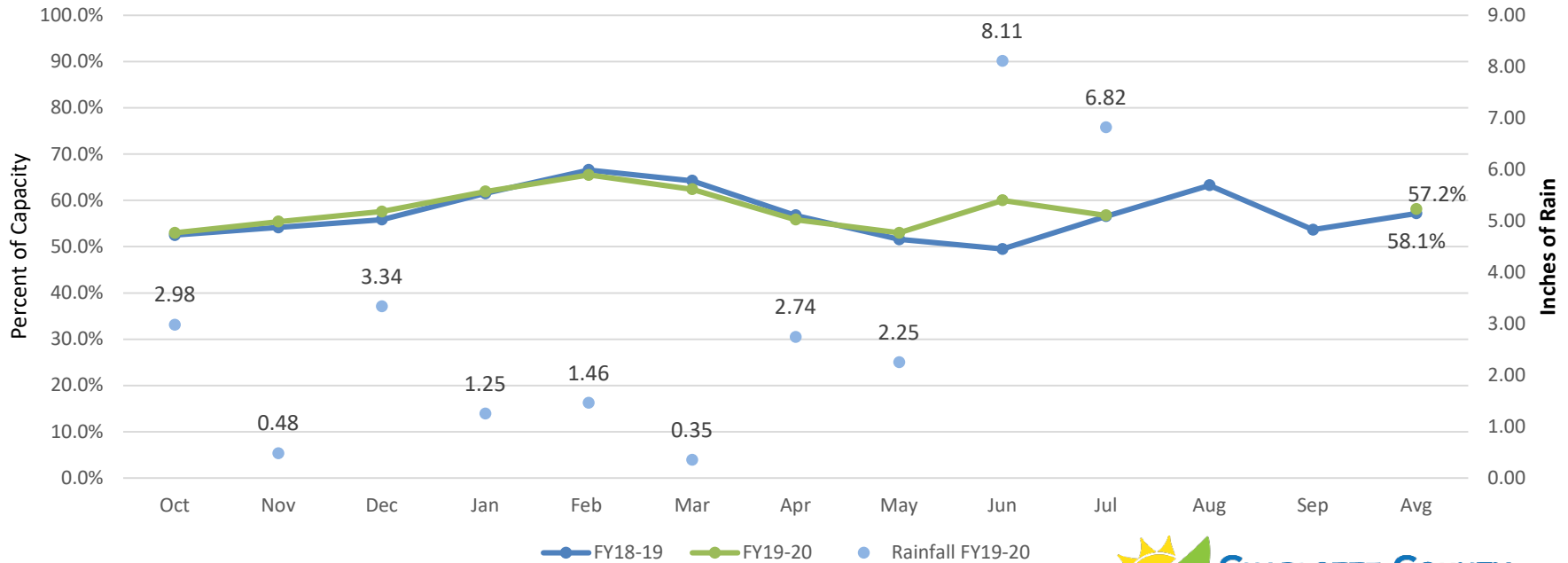
Burnt Store Water Reclamation Facility Percent of Capacity



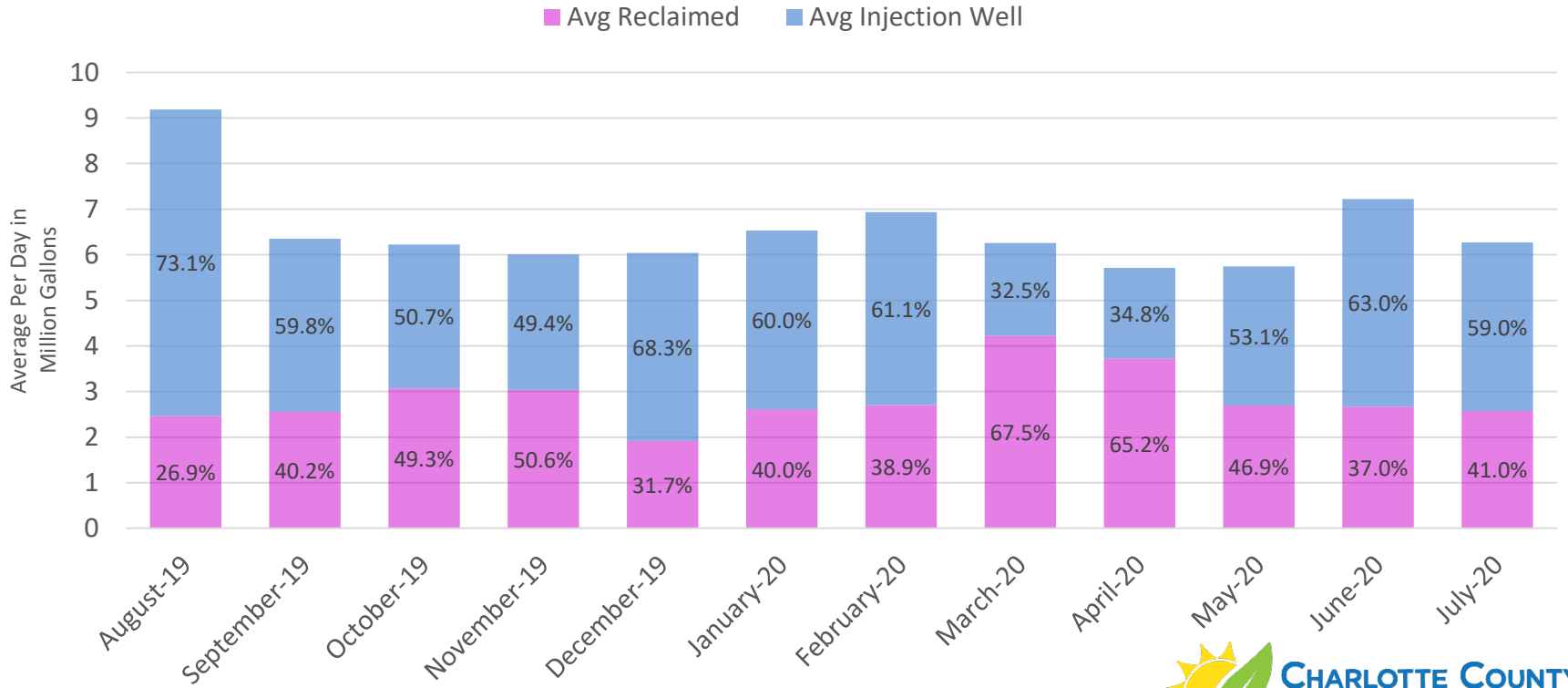
Rotonda Water Reclamation Facility Percent of Capacity



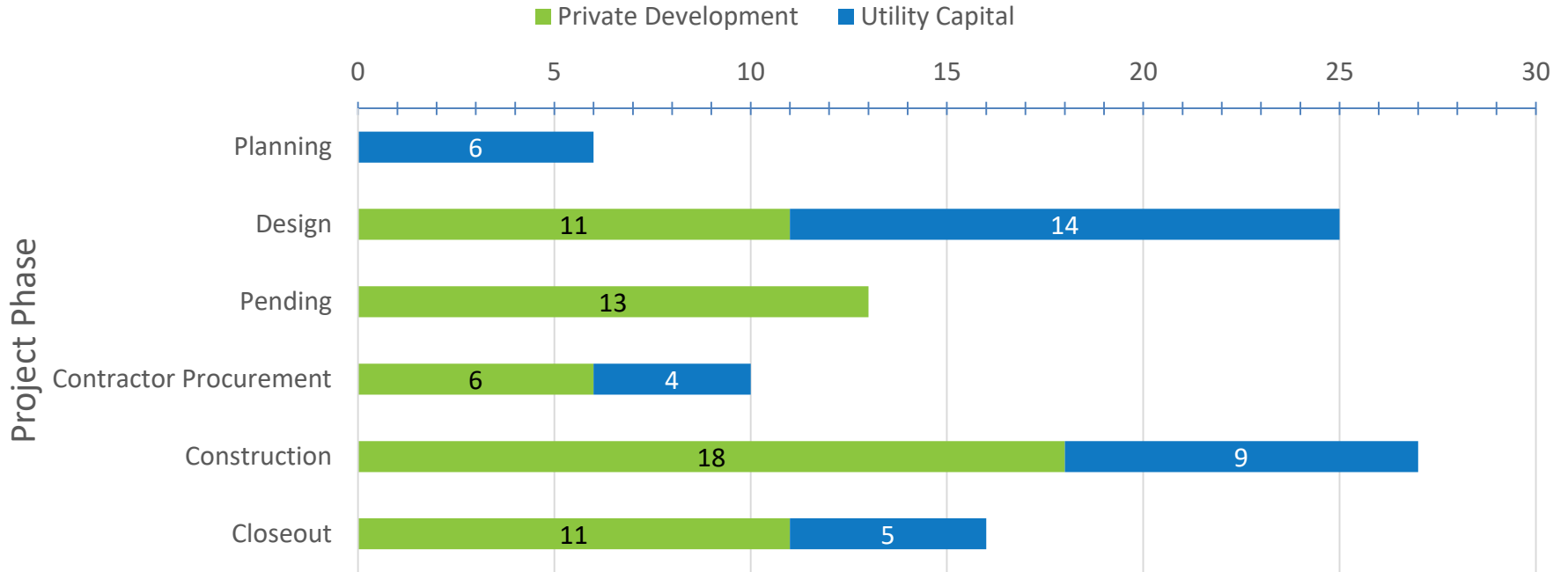
West Port Water Reclamation Facility Percent of Capacity



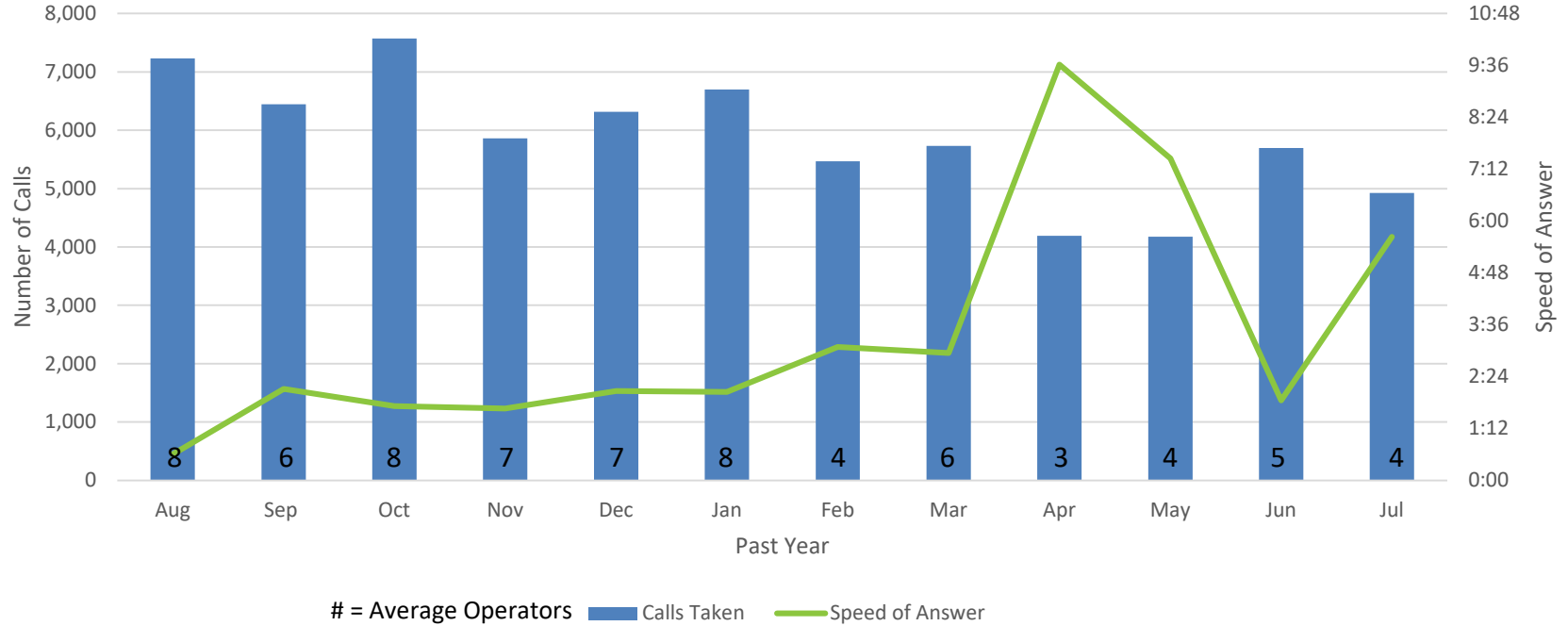
WRF Effluent Distribution



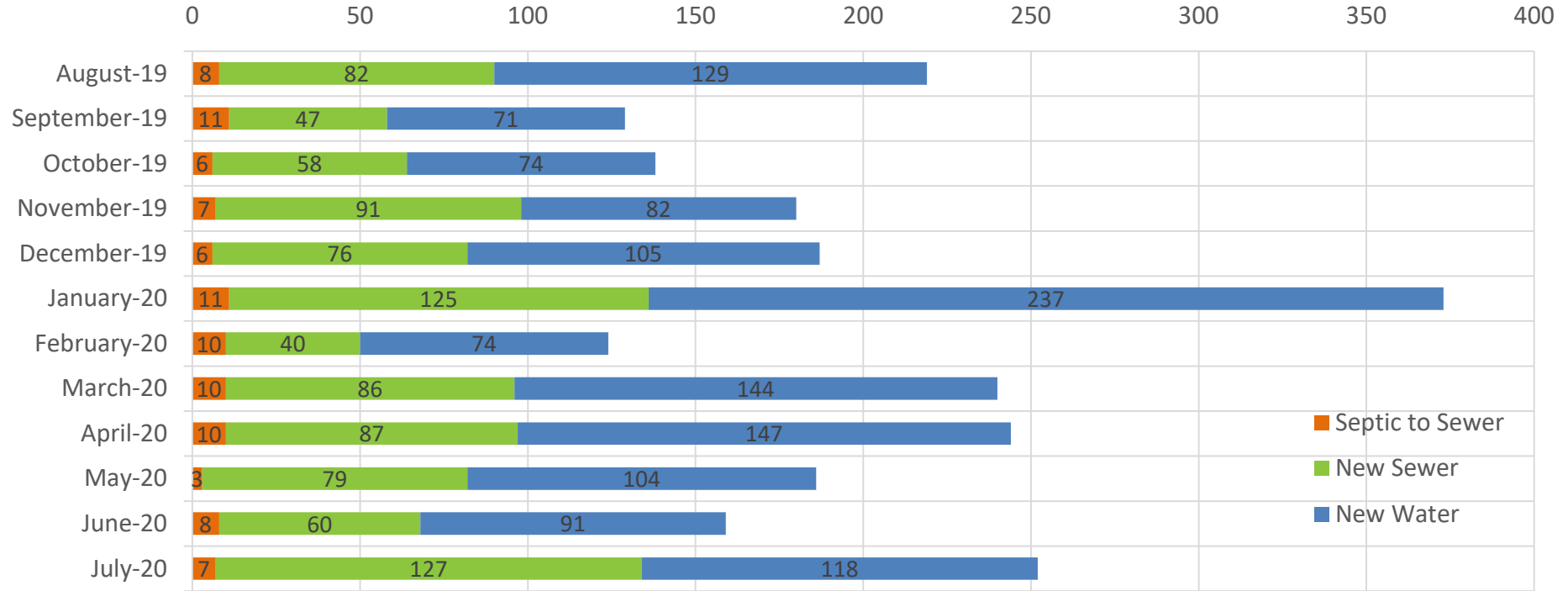
Engineering Projects



Call Center Data



New Connections



Past 12 months: S2S 97, Sewer 958, Water 1,376

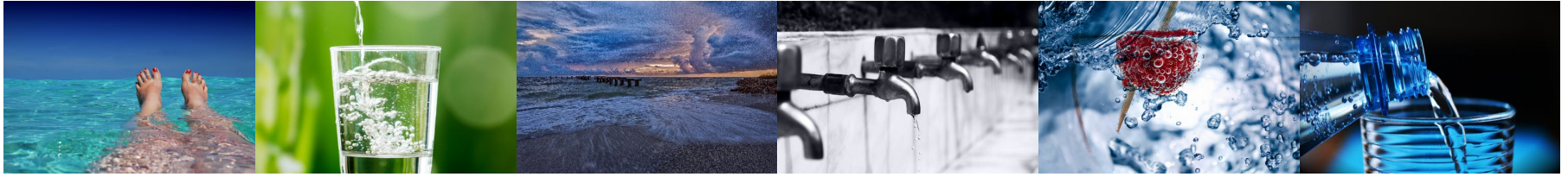


Updates



Planned FY21 R&R

- Capital Maintenance Plan
 - West Port WRF Headworks replacement
 - Rotonda WRF screw conveyor/rotating screens
 - LS 2 Dalton replacement & Conway Area force main & water main replacement
 - LS 1 Community Center force main replacement
 - LS 37 Quesada replacement
 - Quesada force main replacement
 - Sunnybrook - North Access Rd force main replacement
 - Mid County Lift Stations - modifications (impacts associated with LGMLS)
 - Manhole Relining - various locations
- Capital Improvement Plan
 - Deep Creek force main replacement
 - Ackerman Water
 - Public Works various relocations
- Total budgeted \$17.2M



Questions?

