

A large, stylized graphic in the background featuring a yellow sun with rays on the left and several green leaves on the right, all set against a light blue wave-like shape at the bottom.

# Traffic Calming Update

October 20, 2020 Workshop



CHARLOTTE COUNTY  
FLORIDA

# New Transportation Engineer

Robert Fakhri, P.E.

# Discussion Points

- Review of current traffic calming policy
- Results of use of traffic calming policy
- Transportation working group
- Next steps for traffic calming
- Next steps for transportation issues

# Traffic Calming

- Traffic calming is an engineering approach that uses physical design and other measures to improve safety for motorists, pedestrians and cyclists.
- It has become a tool to combat speeding and other unsafe behaviors of drivers in the neighborhoods. It aims to encourage safer, more responsible driving and potentially reduce traffic flow.

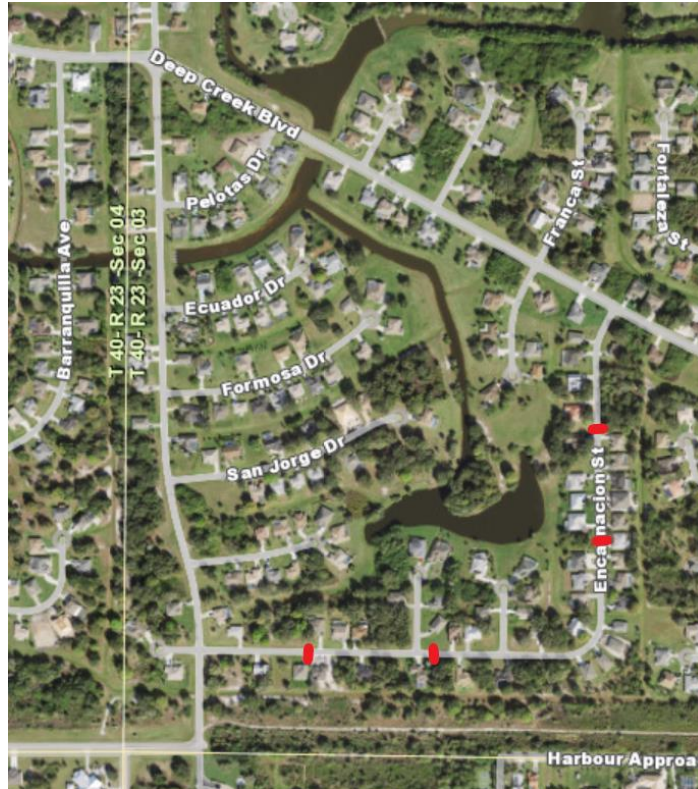
# Traffic Calming

- Traffic Calming Policy
  - Approved February 27, 2018
- Speed Tables
  - Encarnacion Street in Deep Creek
  - Fruitland Avenue in Englewood East
  - Albury Drive in Greater Port Charlotte

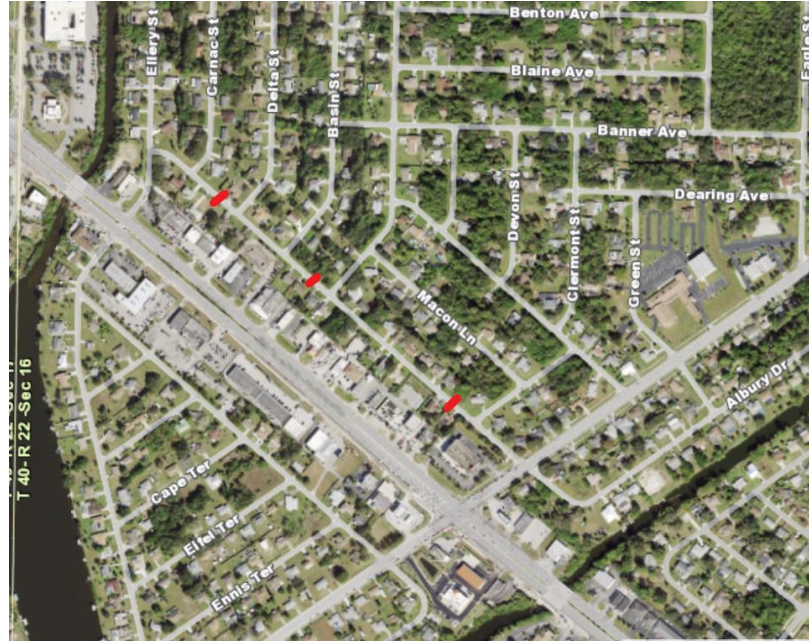
# Example of Speed Table Installation



# Encarnacion Street Speed Tables

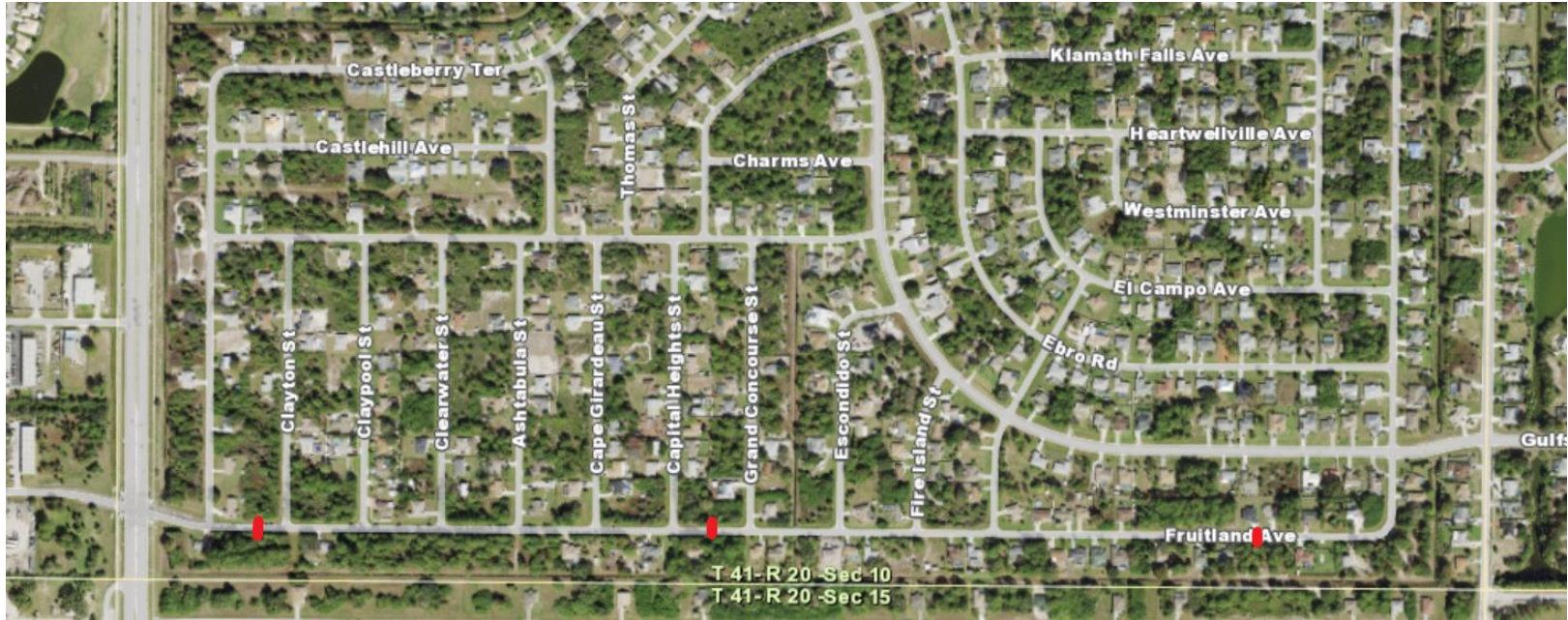


# Albury Drive Speed Tables





# Fruitland Avenue Speed Tables



# Traffic Calming

- Many requests for traffic calming
  - Neighborhoods
  - Cut through roads
  - Collector and major collector roads

# Traffic Calming

- Take a step back
- Not everything fits into one scenario
- Take a more holistic approach to traffic

# Traffic Calming

- Working Group
  - Public Works
  - Community Development
  - Sheriff's Office
  - Fire/EMS

# Traffic Calming

- Working Group
  - Early meetings included data sharing that is proving very beneficial
  - This is helping to avoid duplication of efforts
  - Ensure response times were not impacted
  - Partnering with Sheriff's Office to dovetail enforcement with potential changes

# Traffic Calming

- Revised traffic calming policy
  - Multiple options for various situations
  - Funding options
    - MSBU is not an appropriate funding source
  - Develop a clearly defined process based on data

# Traffic Calming Policy

- As areas develop, roadways will see increase in traffic counts
- Traffic needs to be able to flow
- Policy will try to balance these initiatives

# Next Steps with Traffic Calming

- New transportation engineer
- Reviewing current policy
- Putting together proposed policy
  - Bring back to the BCC for discussion and approval



# Transportation Challenges

- Shifting problem areas
- Creating Ordinances that will not be enforced
- Data driven decision making
- Funding
- Prioritization
- Expectations vs. reality

# Next Steps with Transportation Issues

- Holistic approach to traffic
- When complaints are received or see issues
  - Not just look at the particular issue
  - Look at the entire area

# Next Steps with Transportation Issues

- Create formalized document that delineates the process for requests/issues
  - Clarification on what data, studies, and analysis are needed for traffic requests/issues
- Matrix of projects with priorities
  - Help prioritize and schedule for funding
- Robust outreach effort explaining the process
  - Social media, MSBU meetings, pamphlets, etc.

# Questions?