

# Utilities Department Quarterly Projects Update

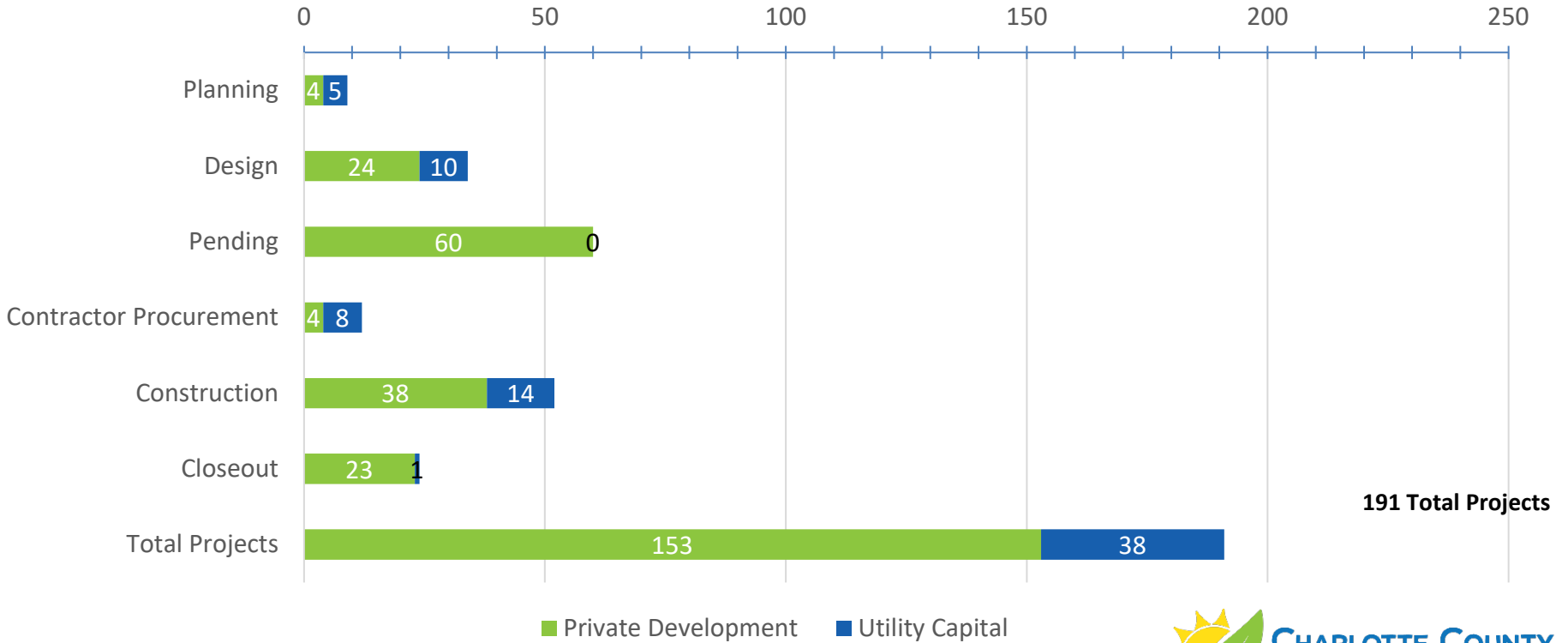


April 16, 2024

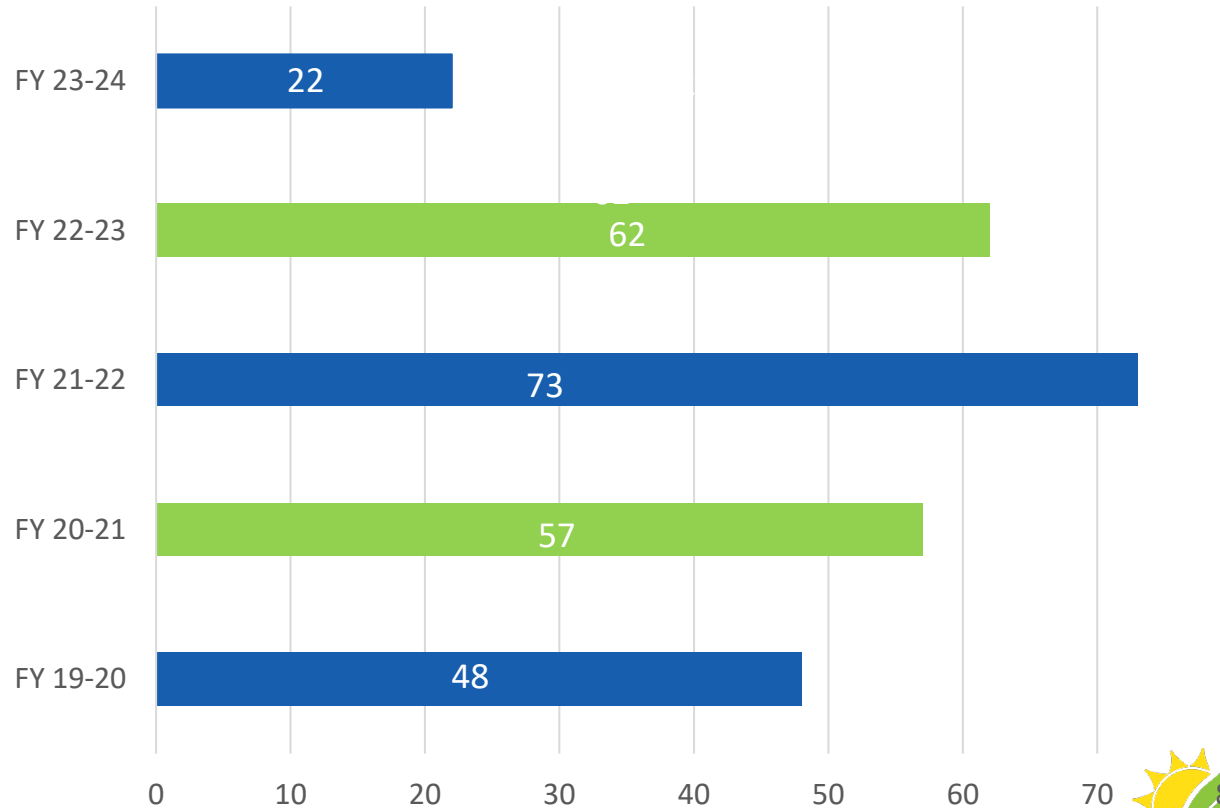


CHARLOTTE COUNTY  
FLORIDA

# Engineering Projects



# Development Projects



# East Port Expansion

- Project Stage: Construction
- Increase capacity 6 to 9 MGD
- Advanced Wastewater Treatment Design (AWT) Approved and Commenced
  - SRF Funding Loan Application Approved
- Construction – Poole & Kent Company of Florida
- Construction cost – \$106,188,600
- Construction expected through 2026
  - Currently reviewing shop drawings



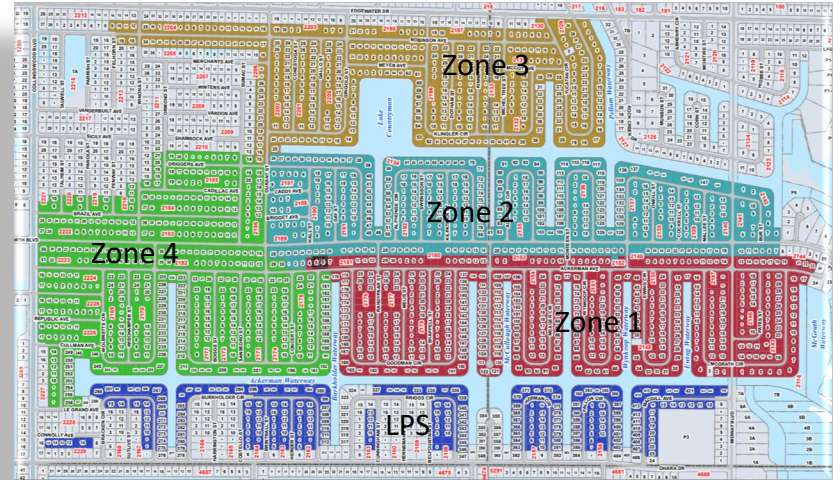
# Burnt Store Replacement

- Project Stage: Purchasing
- Increase capacity .5 to 2.5 MGD
- Original Plant Expansion Design
  - Completed
- AWT Design Approved and Commenced
  - Completed
- Funding for project – Finalize and obtain
- Bids due on April 17
- Construction scheduled mid 2024 through 2026



# Ackerman - Water Quality Improvement

- Project Stage: Construction
- Sewer/Water
- Construction – Guymann Construction
- Zones 1, 2 & Vacuum Station
  - Vacuum Station operational
  - Zone 1 – Water and vacuum sewer completed
  - Zone 2 – Water complete, vacuum sewer started
  - Construction completion expected spring 2024
- On-lot Connections for Zones 1 & 2
  - Plumbing contract 1 – completed
  - Plumbing contract 2 – underway
  - Plumbing contract 3 – underway
  - Plumbing contract 4 – contract approved
  - Plumbing contract 5 – bids received
  - Connections made as of February: 274
  - Total connections for Zones 1 & 2: Approximately 550



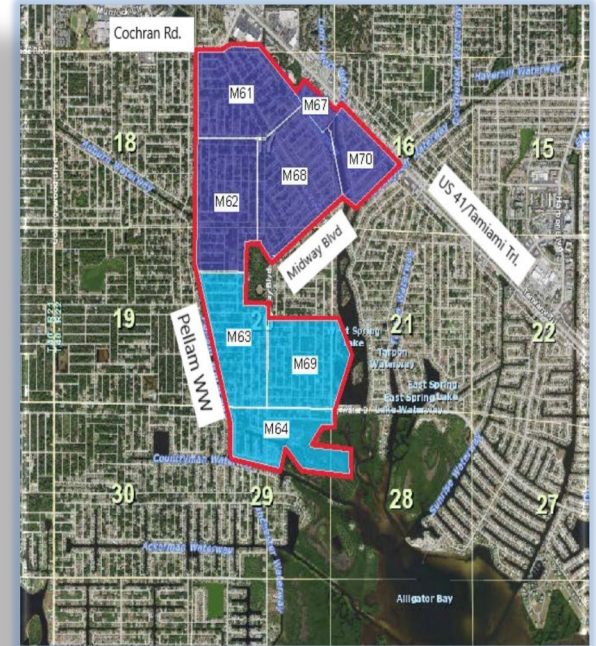
# Ackerman - Water Quality Improvement

- Zones 3, 4 & LPS
  - Design complete
  - Processing EPA Grant Approval
  - Scheduled to bid in summer 2024
  - Estimated construction completion in mid 2027



# Lakeview/Midway - Water Quality Improvement

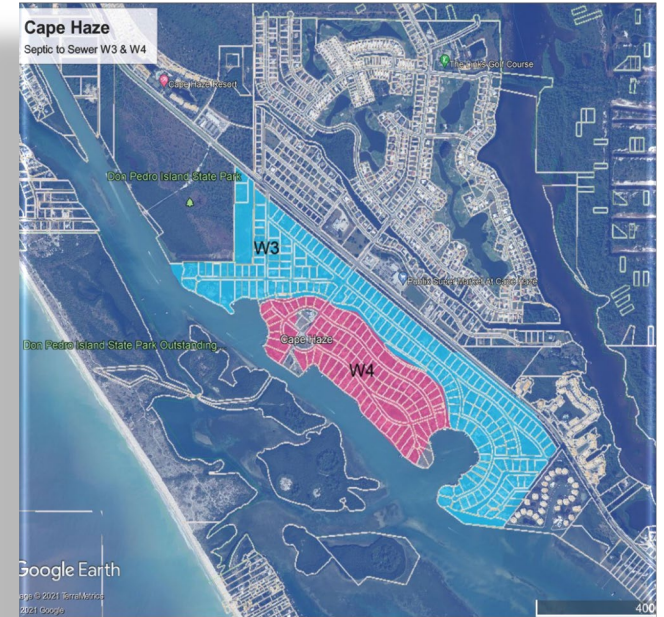
- Project Stage: CIP Approved
  - Design Engineer Selected
    - Giffels-Webster Engineers, Inc.
    - Design Completion – Summer 2024
    - Preliminary Engineering Report Completed – March 2023
- Sewer/Water
  - Design: North Area – 1,545 Occupied Lots
  - Design: South Area – 704 Occupied Lots
- Construction
  - Estimated start late 2025
  - Estimated completion 2028





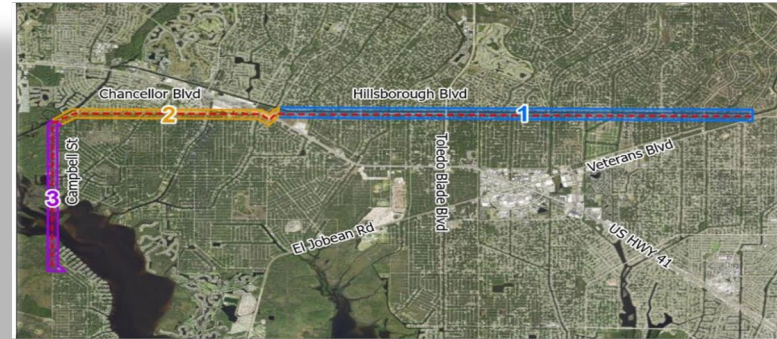
# Cape Haze - Water Quality Improvement

- Project Stage: CIP Approved
  - Design Engineer Selected
    - Giffels-Webster Engineers, Inc.
    - Preliminary Engineering Report – Spring 2024
- Sewer/Water Design
  - 284 Units
    - 223 Occupied
- Construction
  - Estimated start late 2025
  - Estimated completion 2026
- Coordinating with Public Works on paving program.



# Water Authority Phase 2B Joint Project Hillsborough Water Main

- Project Stage: Construction
  - Peace River Manasota Water Authority's Regional Integrated Loop Phase 2B 42-inch pipeline
  - Charlotte County's 8-inch parallel water main
- Construction – Woodruff & Sons
  - Estimated completion 2026



# Master Plans & Reports

- Sewer Master Plan Update
  - Wastewater System Evaluation
    - Improvements needed to meet future growth
    - Corrosion and Odor Control Included
  - Team of Jones Edmunds, HDR & Giffels-Webster Engineers, Inc.
  - Expected completion late 2024



# West Port Expansion

- Project Stage: Planning
- Increase capacity 1.2 to 3-5 MGD
- AWT Design included
- Possible WIFIA Funding (49%)
- Consultant selected
  - HDR – Jones Edmunds Team
  - Future Change Order for change of scope based on the approved Preliminary Engineering Report
- Estimated construction schedule
  - 2027 through 2029



# South County Upgrades

- Utility System Planning
- Consultant selection in Process
  - Selected Weston & Sampson Engineering
- Install Master Lift Station
  - Need identified through System Modeling
- Install Potable Water Booster Station or Plant Upgrades
  - Need identified through System Modeling
- Install Elevated Potable Water Storage Tank
  - Located near Tuckers Grade & I-75
  - Need identified through Water Master Plan
- Estimated construction schedule
  - 2025 through 2027



# MT003: Resiliency and Modernization Grant

- On-going work this quarter:
  - HDR conducting the gap analysis.
  - HDR developing GIS database.

A large, stylized graphic in the background featuring a yellow sun with rays on the left, a light green leaf on the right, and a light blue curved shape at the bottom, all overlapping.

# Questions?



**CHARLOTTE COUNTY**  
FLORIDA