

Fire & EMS

Strategic Plan Update



CHARLOTTE COUNTY
FLORIDA

Overview

- Standard of Coverage
- Community-Driven Strategic Plan
- Operational Plan Developed
- Implementation of The Plan



Implemented

- **Advanced Life Support Engines**
 - Engine 11 – February 14th
 - Engine 7 – June 5th
 - Engine 3 – Pending Paramedic Staffing
- **Peak-Load Rescues**
 - Medic 1 – April 14th
 - Medic 2 – September 25th
 - Unit Hour Utilization (UHU)
 - System Reliability
 - Call Concurrency



Improvements – Call Processing (90th Percentile)

Call Processing

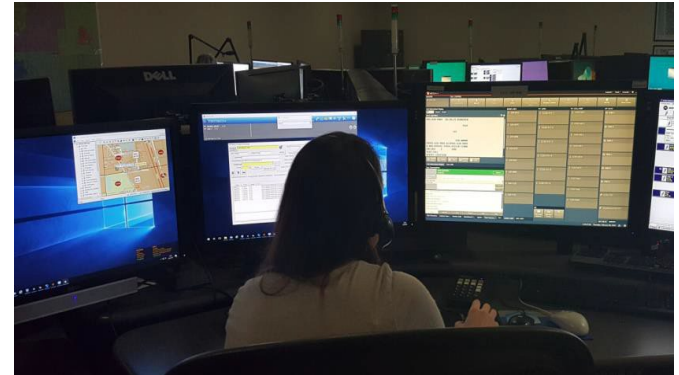
- 911 call received to unit dispatched
- 2022 – 3:42 (222 seconds)
- 2023 – 3:24 (204 seconds)
- 2024 – 2:22 (142 seconds)

Rapid Dispatch Implemented July 2023

National Recommendation <120 seconds

• Opportunity

- Station Alert (Automated)
- NFPA 1710 Advancing Medical Priority Dispatch



Improvements – Turnout Times (90th Percentile)

Turnout Time

- Dispatched to Enroute

2022 – 2:42 (162 seconds)

2023 – 2:33 (153 seconds)

2024 – 2:26 (146 seconds)

National Average – 120 seconds

CFAI & NFPA 1710 – 90 seconds

Operational Adjustments

- Education/Awareness
- Station Design
- Continued Policy/Process Review
- Station Alerting

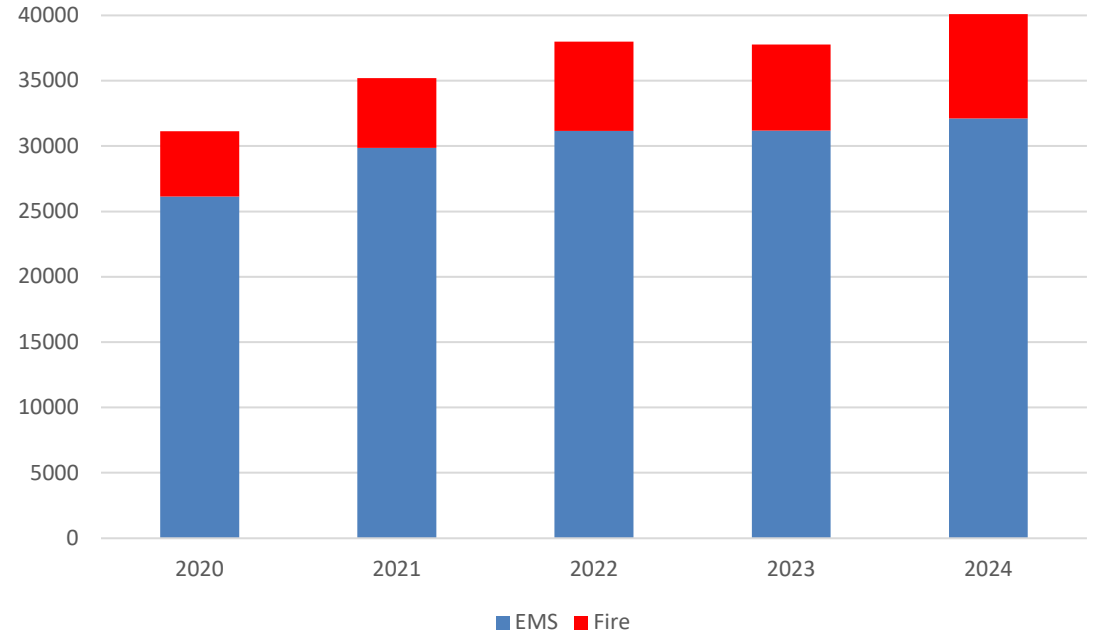
Community 911 Demand

	2022	2023	2024
Total Demand	37,981	37,780	40,094*
Average Per Day	104	103.5	110
EMS Runs	31,164 (82.1%)	31,177 (82.5%)	32,115 (80.1%)
Fire Related Runs	6,817 (17.9%)	6,603 (17.5%)	7,979 (19.9%)

Service Demand

5 Year Increase 2020-2024

- 22.3% Call Volume Increase
- 18.6% EMS Call Volume Increase



Unit Hour Utilization

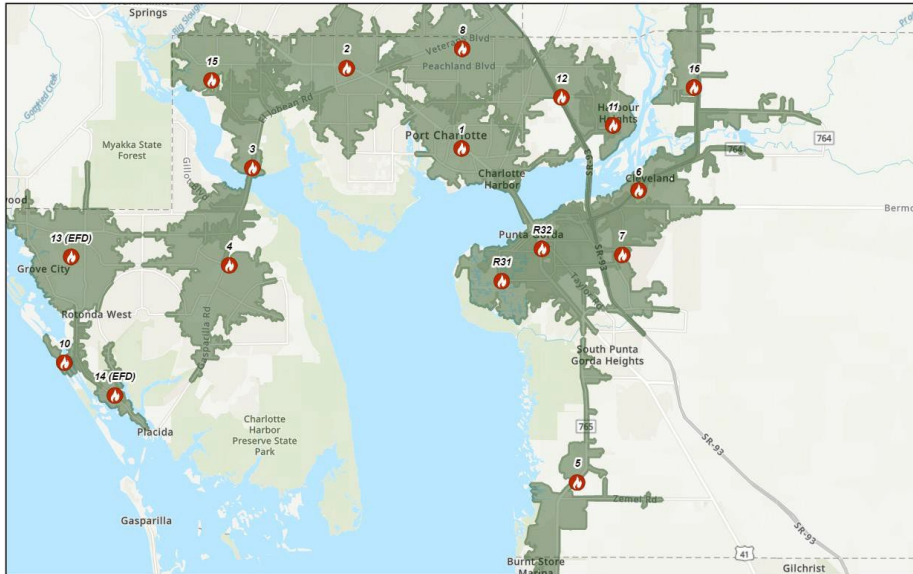
Unit	2022	2023	2024
Rescue 32	26%	27%	28%
Rescue 1	27%	25%	25%
Rescue 10	26%	25%	25%
Rescue 2	24%	23%	23%
Rescue 12	23%	23%	23%
Rescue 13	21%	20%	22%
Rescue 8	19%	18%	18%

IAFC Recommends 25% as a Planning Threshold
Best Practices would not have units exceed 30%

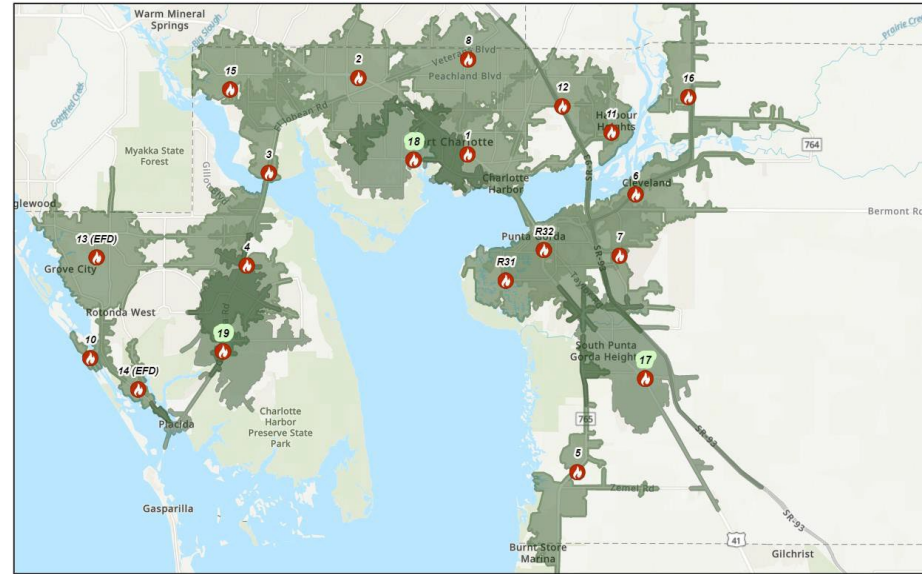


Geographical Drive Time Analysis – 6 Minute

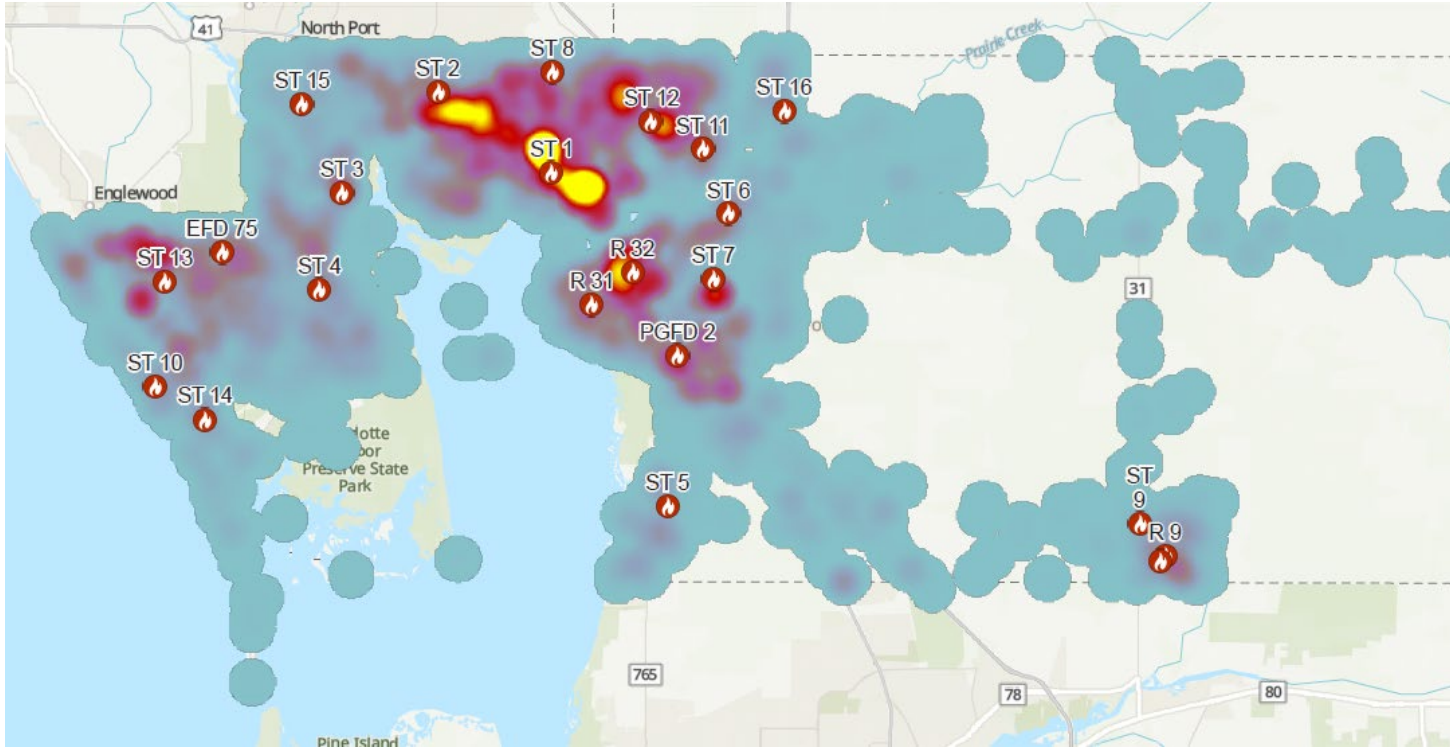
Current Stations



3 Proposed Stations

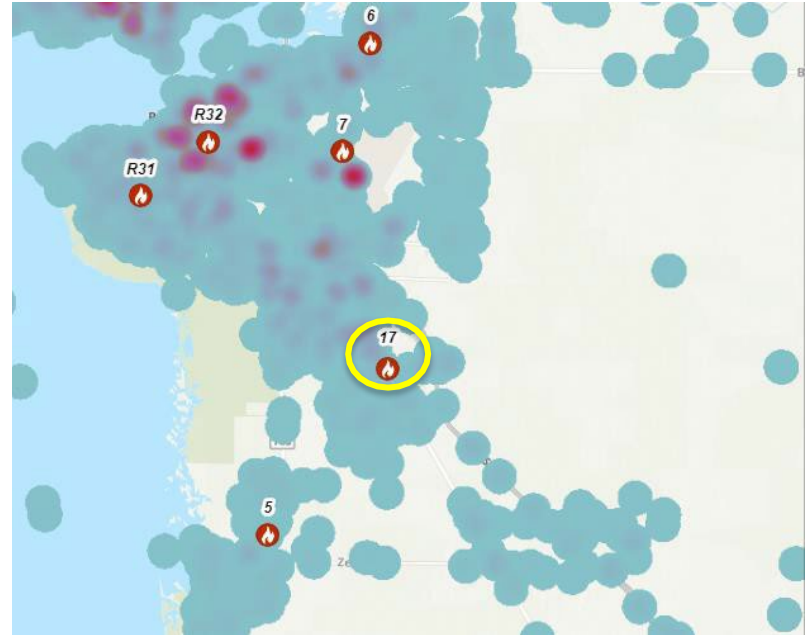


2024 Call Volume through 10/31 (33,582)



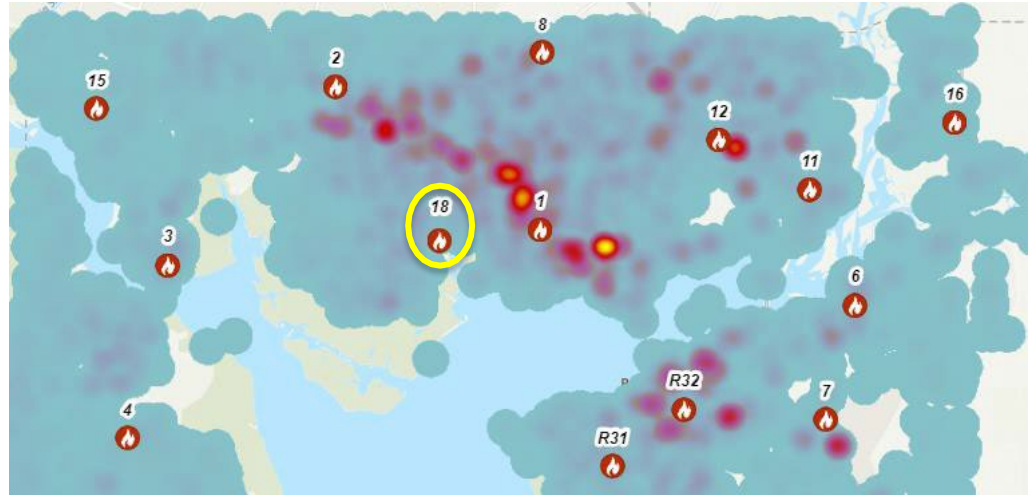
Station 17 – Tuckers Grade

- Station 17
 - ALS Engine
 - Rescue
 - *Ladder Truck Recommended 2027 (Truck and 9 FTEs)*
- Total Station FTEs
 - Lieutenant 3
 - FireMedic 6
 - Fire/EMT 6



Station 18 – Edgewater Drive

- Station 18
 - ALS Engine
 - Rescue
- Total Station FTEs
 - Lieutenant 3
 - FireMedic 6
 - Fire/EMT 6



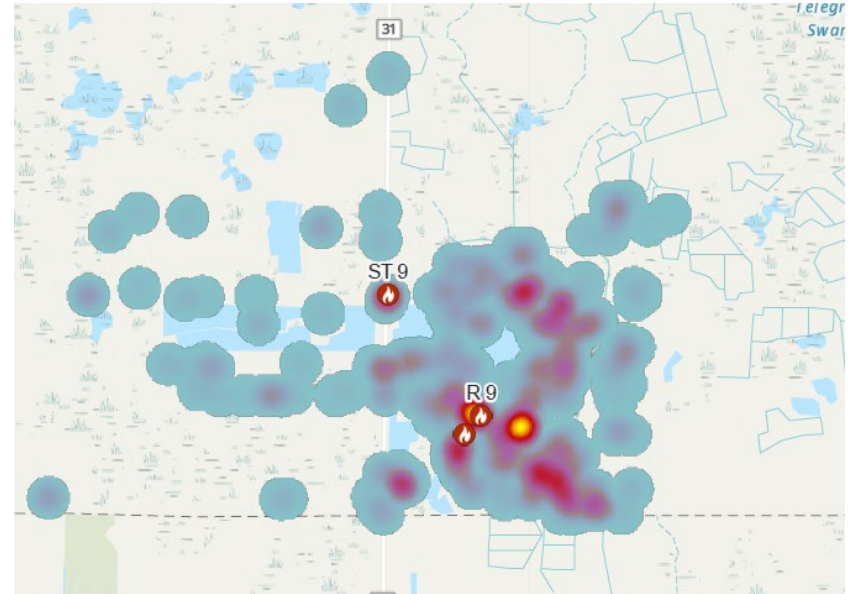
Station 19 - Gasparilla Road

- Station 19
 - ALS Engine
 - Rescue
- Total Station FTEs
 - Lieutenant 3
 - FireMedic 6
 - Fire/EMT 6



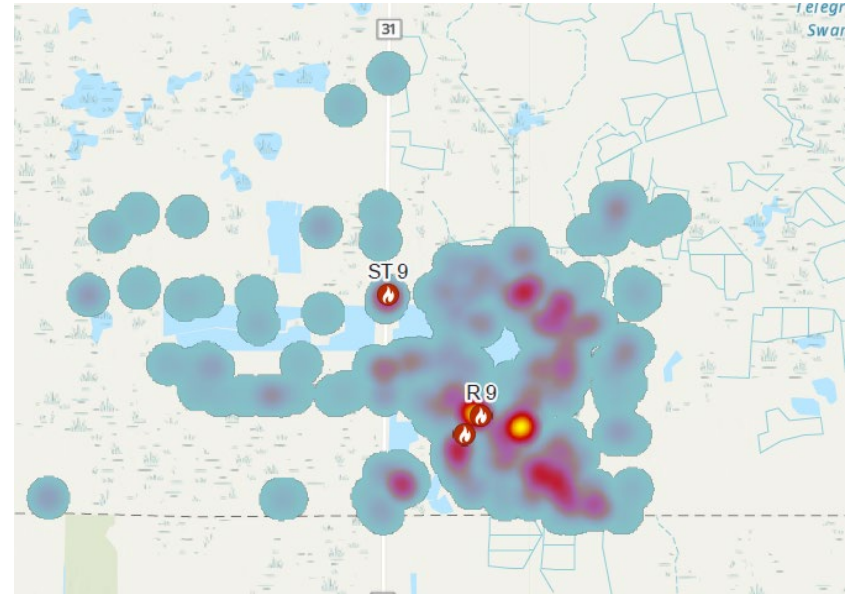
Station 20 – Babcock #2

- Station 20
 - ALS Engine
 - Rescue
 - Ladder Truck
- Total Station FTEs
 - Lieutenant 6
 - FireMedic 9
 - Fire/EMT 9



Station 21 – Babcock #3

- Station 21
 - ALS Engine
 - Rescue
 - Battalion
- Total Station FTEs
 - Battalion 3
 - Lieutenant 3
 - FireMedic 6
 - Fire/EMT 6



Strategic Plan

Apparatus	Station 17 - Tuckers	Station 18 - Edgewater	Station 19 - S. Gulf Cove	Station 20 - Babcock #2	Station 21 - Babcock #3	Station Bermont / 31	Apparatus	Total FTEs
Rescue	1	1	1	1	1		6	
Engine	1	1	1	1	1	1	6	
Ladder	1			1			2	
Staff Vehicle					1		2	
Position								
BC/DC					3			3
Captain								0
Lieutenant	6	3	3	6	3	3		24
Firemedic	9	6	6	9	6	3		39
FireEMT	9	6	6	9	6	3		39
Paramedic								0
Total	24	15	15	24	18	9	16	105

Additional Personnel

Division	Position	Quantity Needed	2024	2025	2026	2027	2028
Fire Prevention	Deputy Fire Marshal	1		1			
	Fire Inspector	2	1/1		3		
	Administrative Assistant	1	1/1				
Support Services	Project Coordinator	1	1/1				
	Admin Assist. / Financial	1		1			
Administrative	Training Officer (FF/LT/Captain)	1	1/1				
	Division Chief (New Class 40)	2	1/1				1
Field Staff	Division Chief (New Class 56)	3			3		
	Captain (56)	6		3		3	
	LT (56) - Truck 9	3		3			
	FM (56) - Truck 9	3		3			
	FE (56) - Truck 9	3		3			
	PM (40) - Medic 3	4			4		
Float / Staffing	LT	12	3/6		3		3
	FM	12 (+11)	6/6	11	3		3
	FE	12	6/6		3		3