

Lee and Charlotte Counties: Our Waters, Our Common Cause

April 15th, 2025



Lee County
Southwest Florida



CHARLOTTE COUNTY
FLORIDA

Topics

- Overview of Water Quality Programs
- Our Water Connections
- Our Opportunities and Obstacles



Water plumes post-Hurricane Ian. Source: CHNEP

Charlotte County's WQ Program

Community Services

Habitat Restoration/Conservation
Outreach and Education

Community Development

Floodplain Management
Environmental Code Compliance

Administration



Public Works

Stormwater Management
Ambient Water Monitoring
TMDL & BMAP Compliance

Utilities

Water Supply and Reuse
Wastewater and Septic-Sewer
Environmental Laboratory

Lee County's Water Quality Program

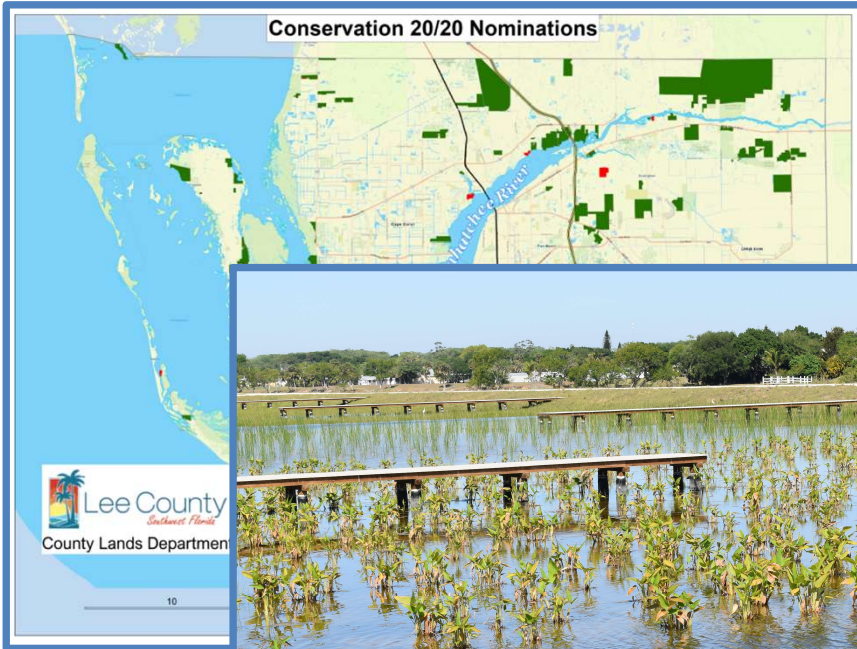
The Department of Natural Resources



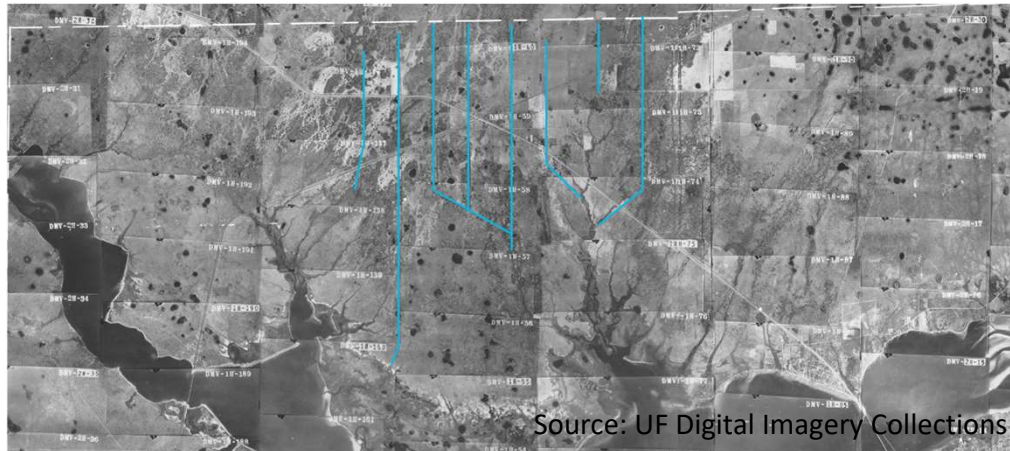
Additional County Water Quality Elements

- *Lee County Utilities*
 - *septic to sewer efforts*
- *Department of Transportation*
 - *Street sweeping*
- *Community Development*
 - *Water quality monitoring and review*
- *Parks and Recreation*
 - *Conservation 20/20 land acquisition program*

Lee County's Water Quality Program - Approach

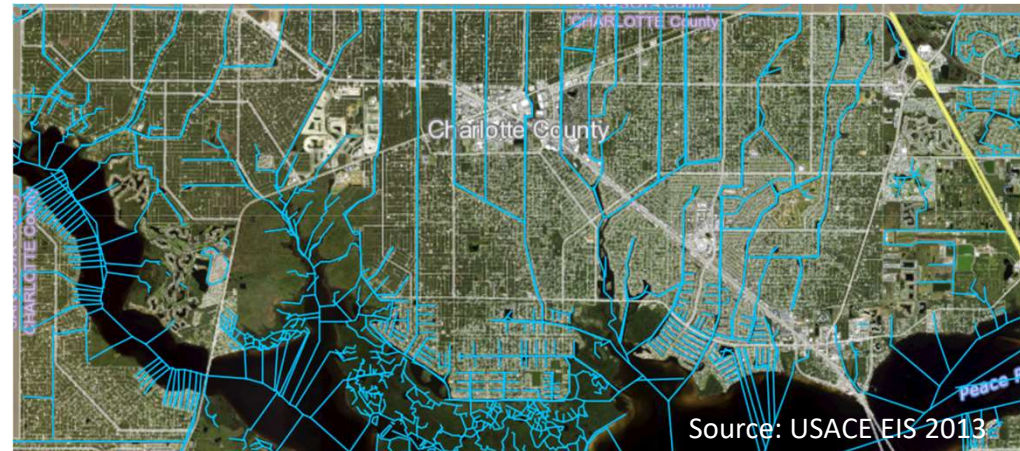


Our Shared Population History



Source: UF Digital Imagery Collections

Port Charlotte Region, 1953



Source: USACE EIS 2013

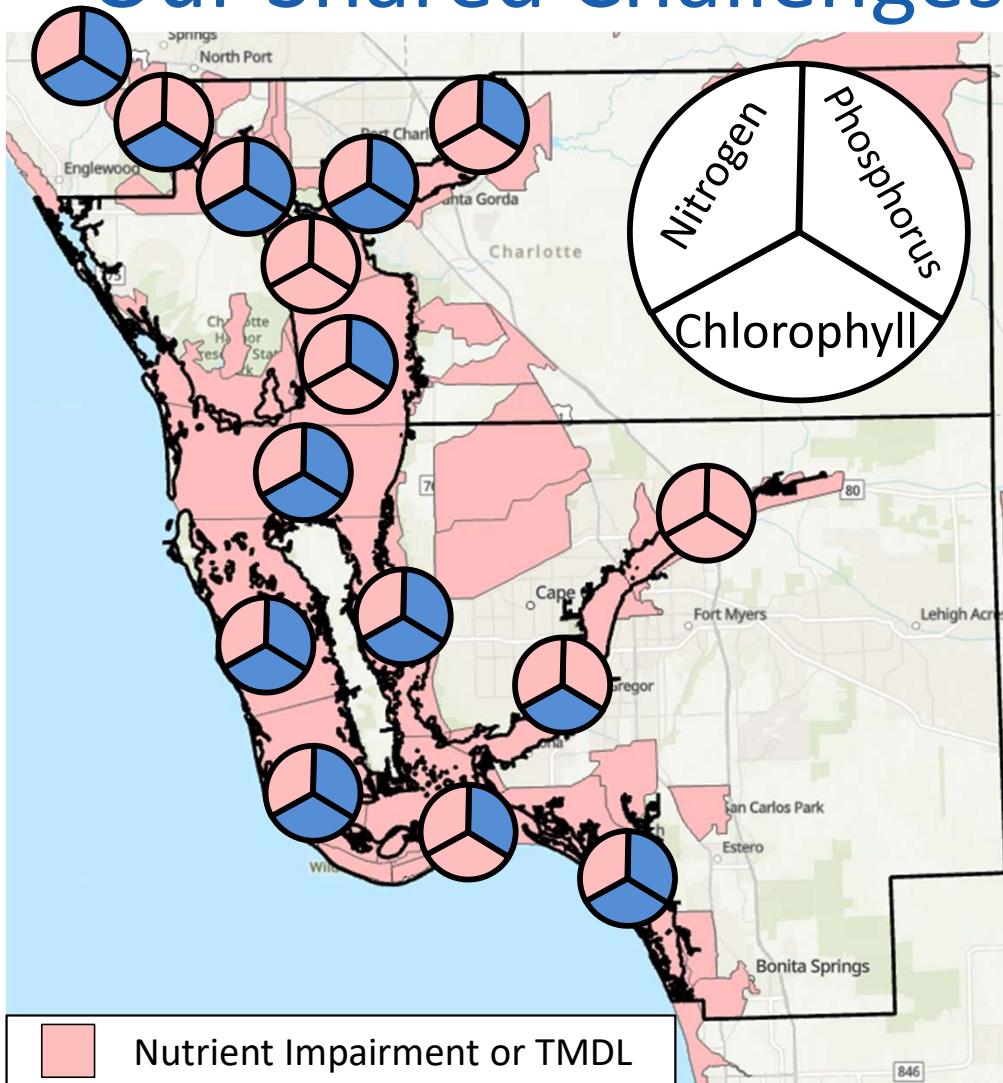
Port Charlotte Region, 2023



Our Shared Challenges: Population Influence on WQ



Our Shared Challenges: Nutrient Impairments



Charlotte Harbor

Segments	2020	2022	Δ Acres	% Change
East Wall North	1,770	1,593	-178	-10%
East Wall South	1,258	1,183	-76	-6%
Myakka River	189	148	-40	-21%
Peace River	349	244	-105	-30%
Placida	4,029	3,881	-148	-4%
Southern Charlotte	2,079	2,112	+34	+2%
Turtle / Bull Bay	4,178	3,944	-233	-6%
West Wall	1,421	1,807	+386	+27%
Total	15,273	14,913	-360	-2%



Lake Okeechobee System Operating Manual (LOSOM) Our Shared Water Quality Concern

Lee County's investments in the Caloosahatchee:

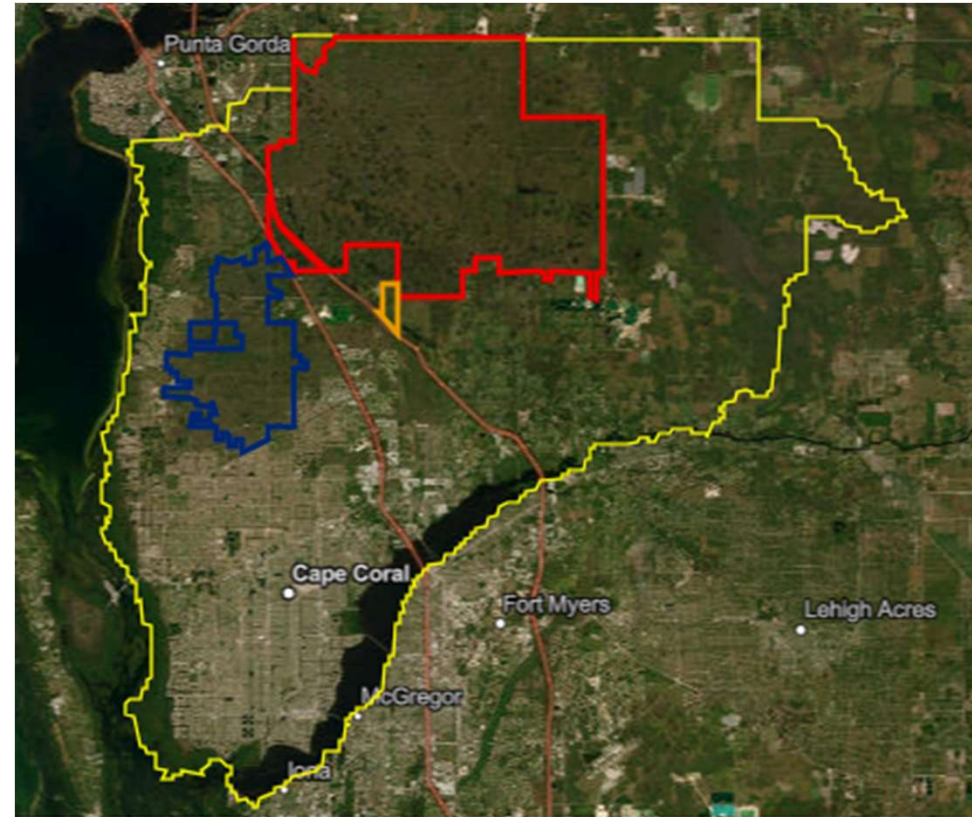
- Robust participation in Lake Okeechobee regulation schedule schedule update (LOSOM) and ongoing engagement in USACE operational decisions
- Significant financial investment in water quality projects in the Caloosahatchee River and Estuary watershed
- Legislative tracking and policy comment



Our Shared Opportunities: Working With Each Other

Regional Cooperative Initiatives:

- Coastal Charlotte Harbor Monitoring Network
- Regional Ambient Monitoring Program
- Charlotte Harbor Flatwoods Initiative



Charlotte Harbor Flatwoods Initiative

Our Shared Opportunities: Learning From Each Other

