



Charlotte County CSWR US-17 Development Sewer Modeling

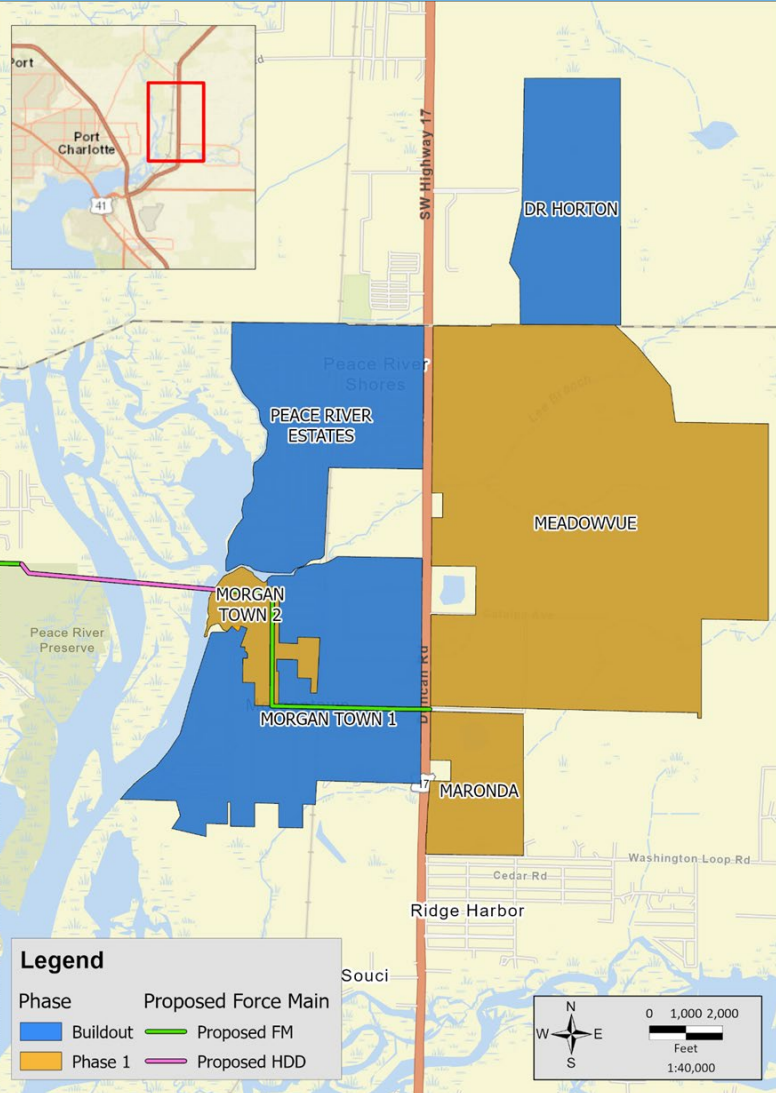
BCC Monthly Workshop | 05-22-2025

JonesEdmunds

- Introduction
- Phases, Parcels, #ERCs & WW Flows
- Modeling Evaluation & Sewer Connection Location
- Effect of US-17 Development on 9 MGD Expansion for East Port WRF
- Closing Discussion



CSWR US-17 Development & Phases

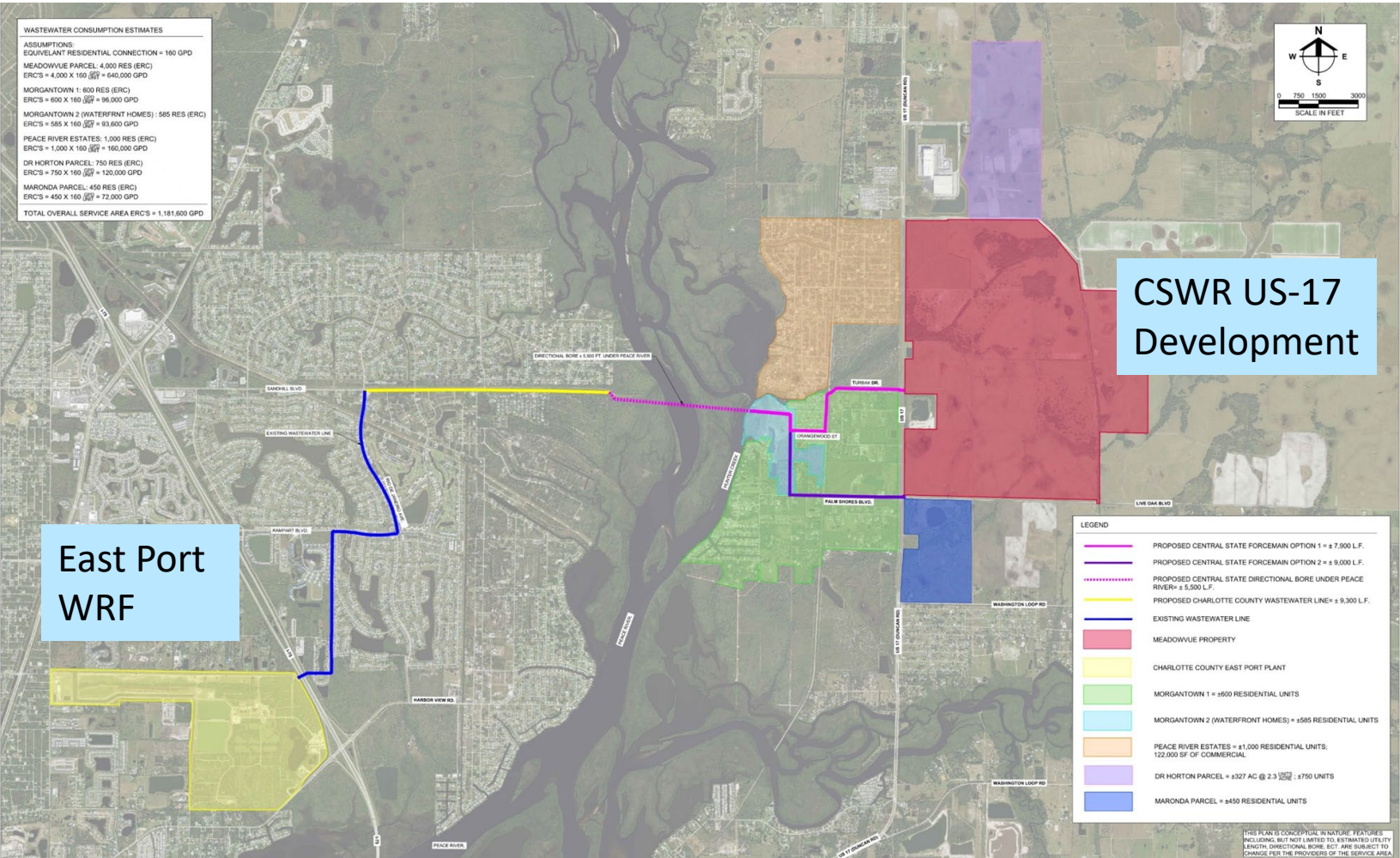


Buildout Phase	Parcel	Estimated ERCs	WW Flow Per ERC (gpd/ERC)	WW Flow Per Parcel (gpd)
Phase 1	Meadowvue	4,000	160	640,00
	Morgan Town 2	585		93,600
	Maronda	450		72,000
Subtotal		5,035		805,600
Phase 2	Morgan Town 1	600	160	96,000
	Peace River Est.	1,000		160,000
	Dr. Horton	750		120,000
Subtotal		2,350		376,000
Total		-	-	1,181,600

2045 WW Flows for US 17 Development

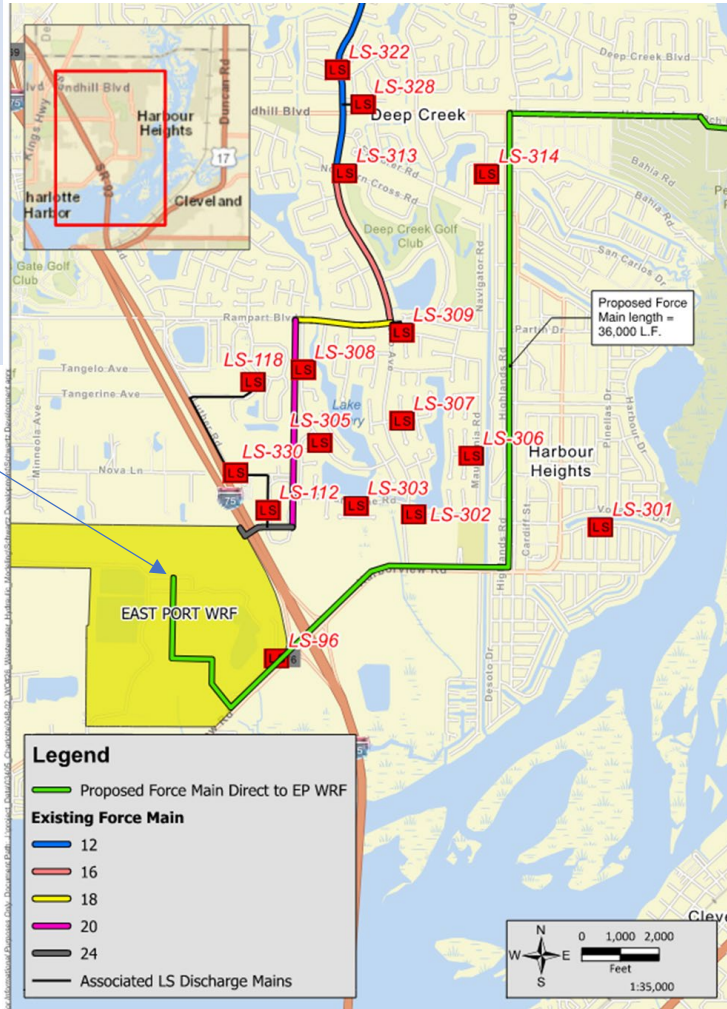
Phase 1	Flows - Interim
Average Daily Flow	560 gpm (0.8 MGD)
Maximum Daily Flow	1,570 gpm (2.26 MGD)
Peak Hourly Flow	2,200 gpm (3.2 MGD)
Buildout	Flow - Total
Average Daily Flow	833 gpm (1.2 MGD)
Maximum Daily Flow	2,380 gpm (2.26 MGD)
Peak Hourly Flow	3,330 gpm (4.8 MGD)

US-17 Development Forcemain Connection to East Port WRF

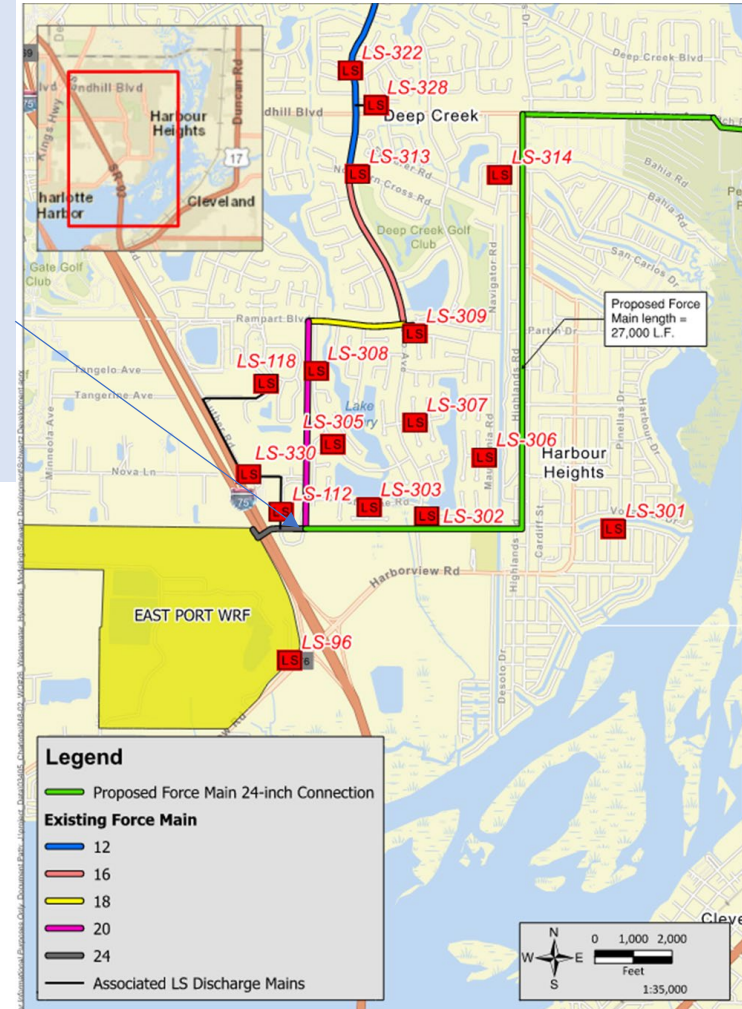


Recommended Connection Locations to CCU East Port WRF Collection System

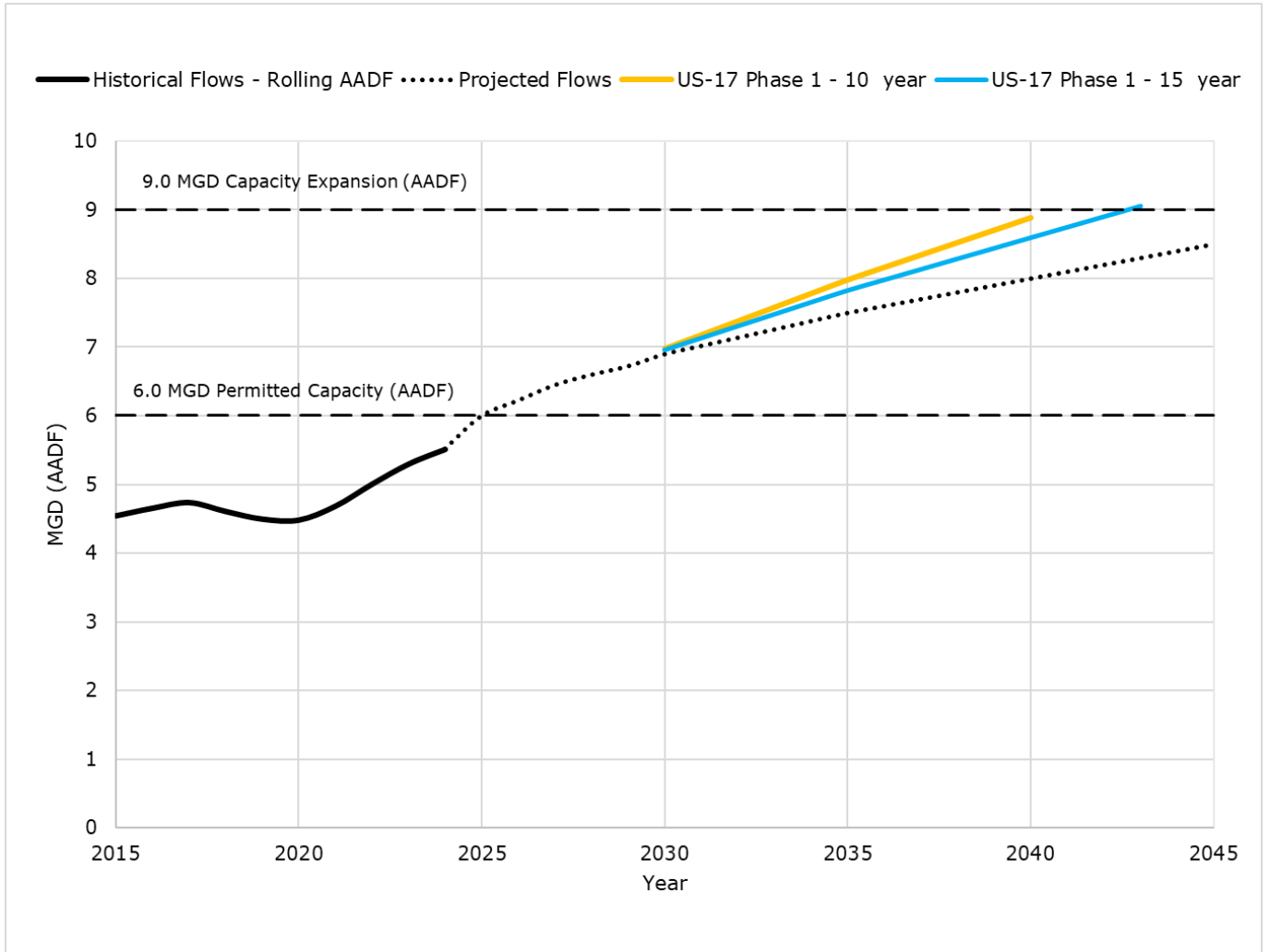
Option 1 –
Connect at
48-inch
Interceptor
at East Port
WRF



Option 2 –
Connect at
24-inch FM
at east side
of I-75
(Hampton
Roads
Apartments)



- Design & permitting for expansion:
- Requires 5-years from year plant will exceed 9 MGD AADF.
- Without US-17 Development, 9 MGD plant capacity acceptable past Year 2045.
- If US-17 Phase I is completed over 15-years, plant will exceed capacity in Year 2043, and design expansion planning to start in Year 2038.
- If US-17 Phase I is completed over 10-years, plant will exceed capacity in Year 2040, and design expansion planning to start in Year 2035.



Closing & Discussion

CONTACT US

324 S. Hyde Park Avenue, Suite 250
Tampa, FL 33606

813.258.0703

jmclellan@jonesedmunds.com

tfriedrich@jonesedmunds.com

www.jonesedmunds.com

JonesEdmunds 

