



Charlotte County Septic to Sewer Affordability Discussion

Quarterly Meeting | 05-22-2025

JonesEdmunds

- Affordability Index- Status Consulting
- Septic to Sewer (S2S) Affordability
- Medium Income & Census Tract Discussion
- Conclusion & Discussion



- Total Utility Bill Affordability Index = 4.5% (*)
- Sewer Component of Index = 2.5%
- Median Household Income (MHI) = \$66,154 (US Census 2023)

$$\$66,154 \times 2.5\% = \$1,654 \text{ per year}$$

(MHI)

Sewer
Component
of Index

Annual Sewer
Affordability Rate

	Annual	Monthly
Sewer Affordability Rate	\$1,654	\$138
Average CCU Sewer Bill	\$808	\$68
Available S2S Assessment	\$840	\$70

Note: Values presented as rounded to the nearest dollar.

Is the 4.5% Affordability Index from Stratus Consulting Appropriate?

- *Water Affordability Needs Assessment: Report to Congress, EPA December 2024.*

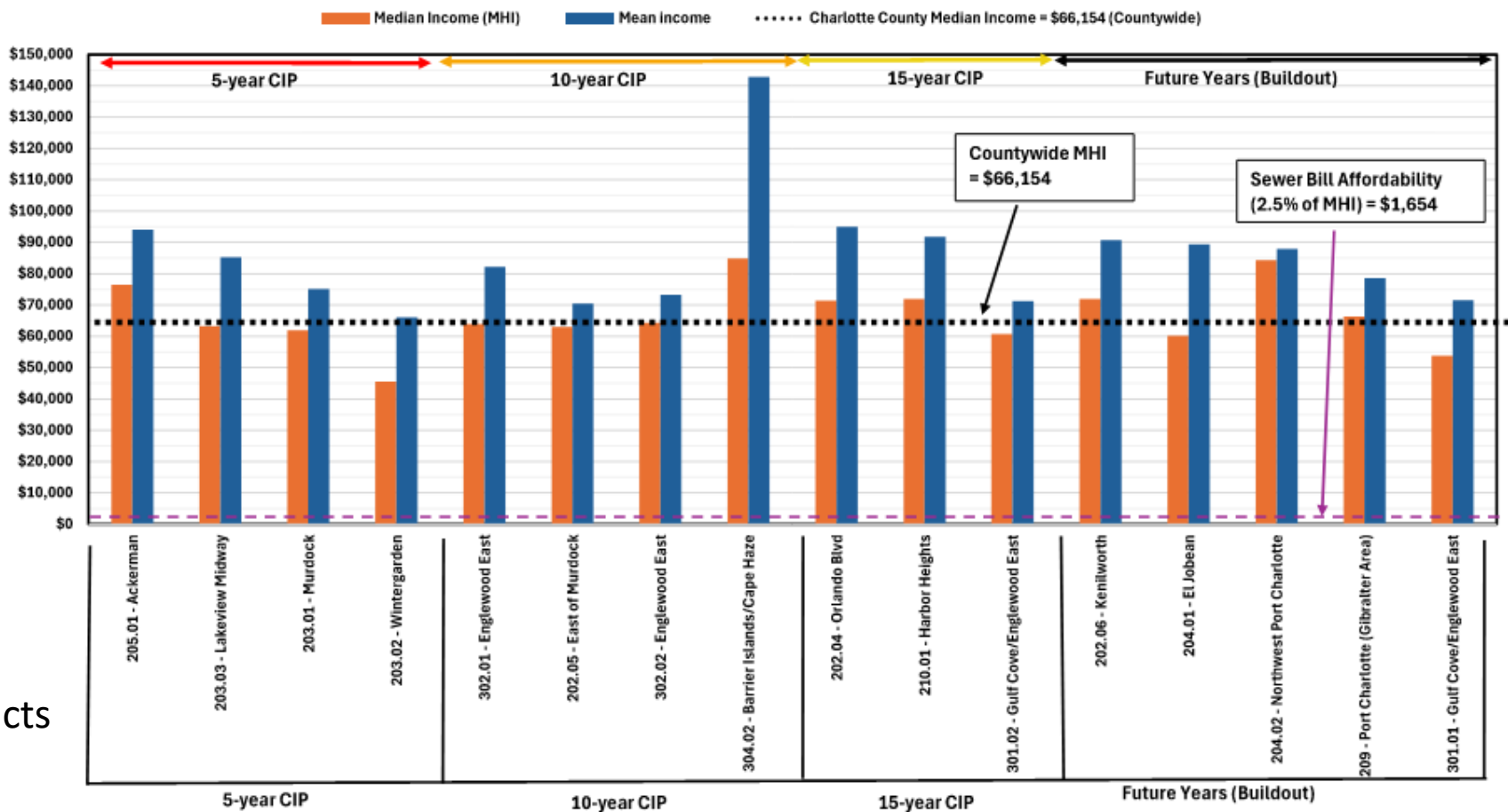
“There is no single approach to addressing water affordability at a national level. Large scale, sustainable change requires addressing the systemic challenges in how water utilities are funded, how rates are set, and how assistance programs are established, particularly to support rate payers facing affordability challenges.”

- Further Discussion on Water Affordability and Reference Resources

County-wide Median Household Income vs. Median Income of S2S CIP Areas

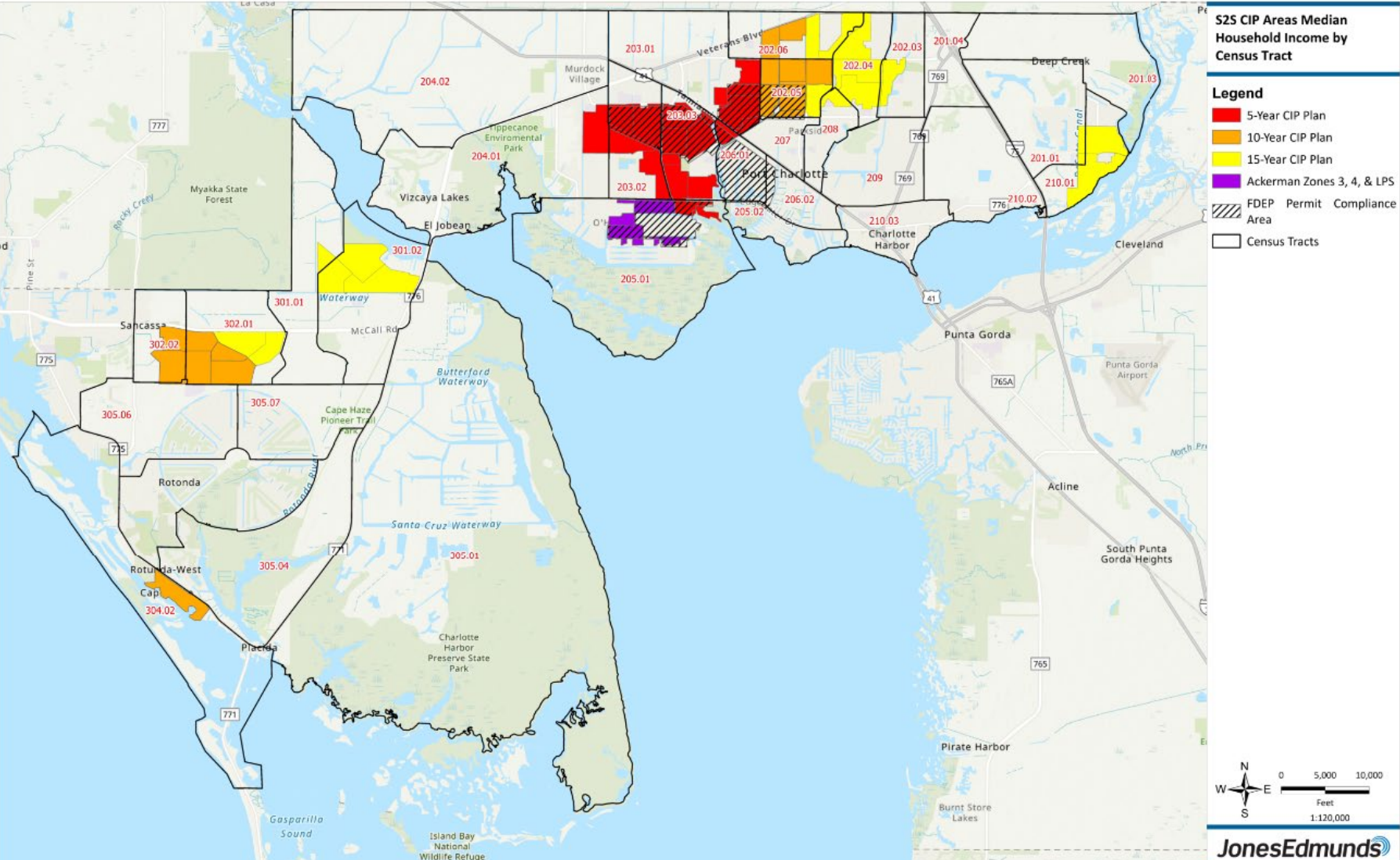


Charlotte County S2S CIP Areas - 2023 Household Income Data
Source: US Census Bureau 2023 ACS S1901



Census Tracts

S to S Areas and Census Tracts



For Informational Purposes Only. C:\03405_CCU\053-01_Sewer_Master_Plan_Update\proj\Census Tract Supplemental Map\Census Tract Supplemental Map.aprx knguyen 3/4/2025

Conclusions and Discussion

- The data presented herein supports using the Countywide MHI value of \$66,154 and method of affordability determination for S to S projects where wastewater service is not available.
- Discussion – Receive Board questions, comments, and feedback



CONTACT US

324 S. Hyde Park Avenue, Suite 250
Tampa, FL 33606

813.258.0703

jmclennan@jonesedmunds.com

tfriedrich@jonesedmunds.com

www.jonesedmunds.com

JonesEdmunds 