

Charlotte County Utilities Projects Update

Water and Sewer Improvements

Treatment Facility Improvements

Credit and Collection Policy

Transition to New Work Site

Jan. 13, 2026



CHARLOTTE COUNTY
FLORIDA

Water and Sewer Improvements



Hillsborough Boulevard Water Main Project

Project:

Installing an 8-inch water main parallel to the Peace River Manasota Water Authority's 42-inch main.

Location:

Hillsborough Boulevard from Yorkshire Street to U.S. 41.

Benefit:

This project adds service redundancy and allows for future improvement projects in the southern regional loop.

Status:

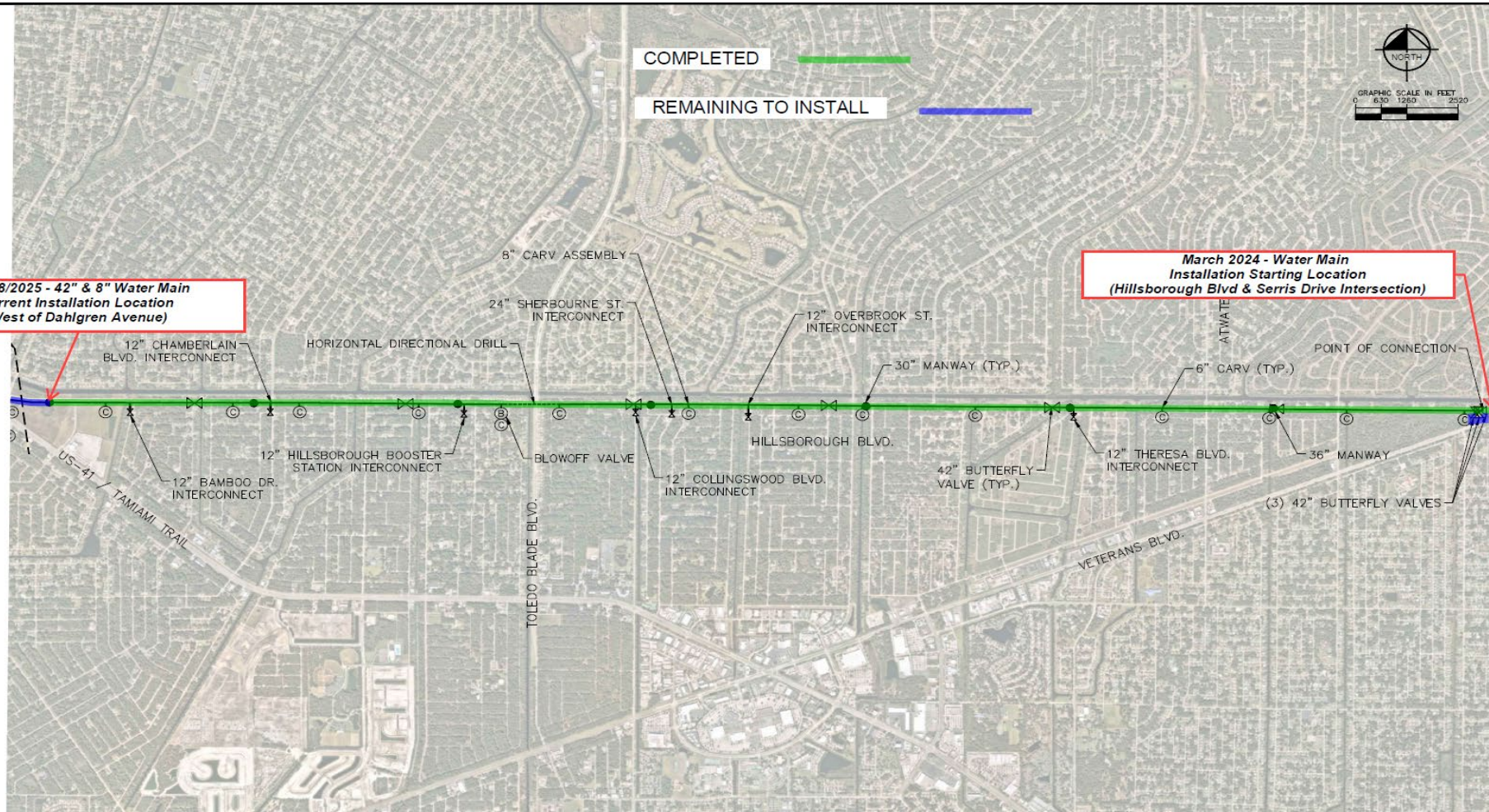
- Currently in construction.
- Jack and bore is being performed at U.S.-41 and Cornelius and Cranberry Boulevards.
- Connections to the 8" parallel main are complete from Yorkshire Street west to Shy Street.
- Cost: \$5,045,110.89.



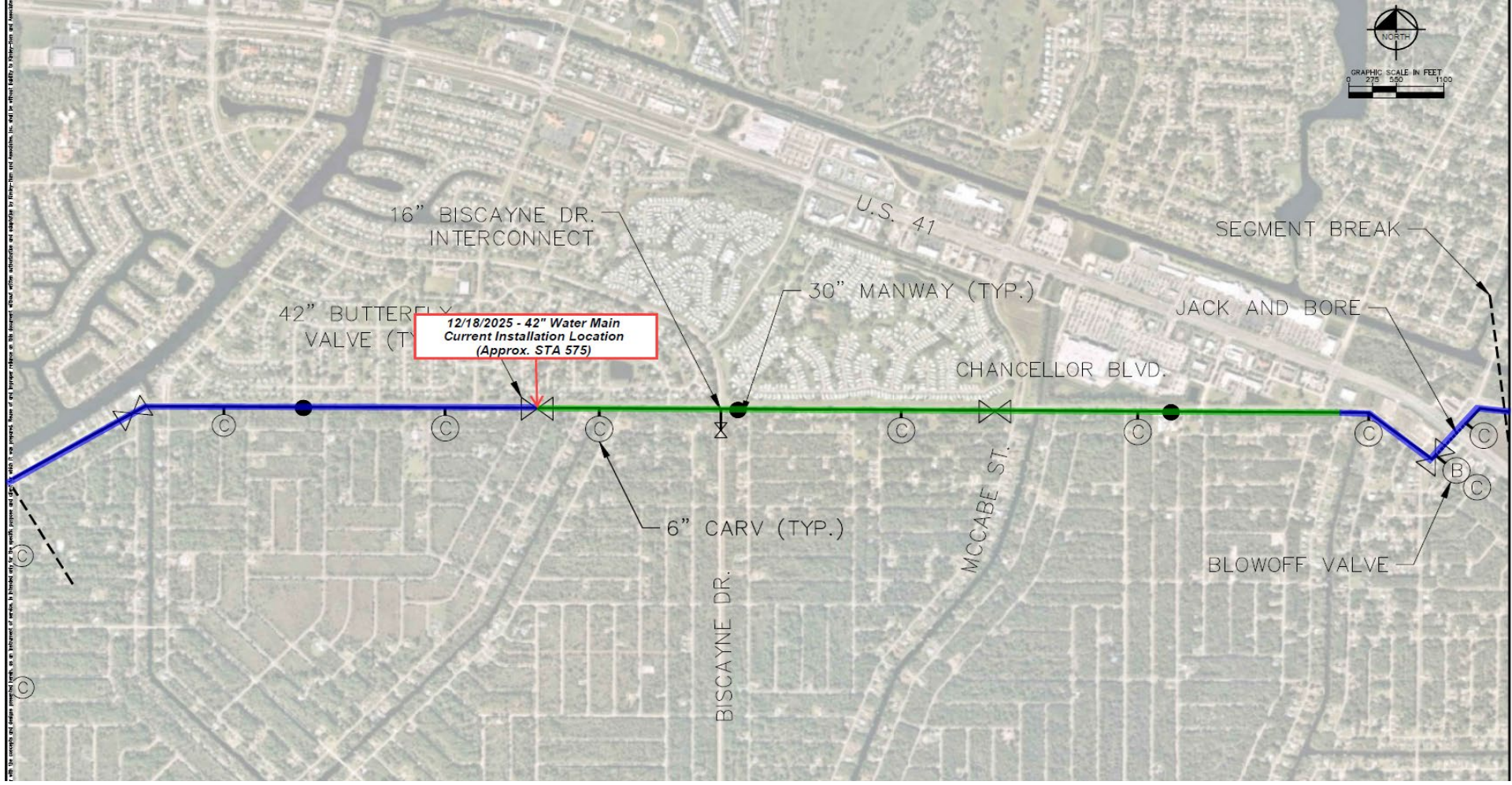
Hillsborough Water Main: Segment 1

SCHEMATIC OVERVIEW: [Schematic Overview](#)
This is a schematic diagram for informational purposes only. It is not intended to be used for construction or other purposes without the approval of the City of Hillsborough.

DE 28 PIPELINE LAYOUT: SHEADY T. February 05, 2024. 03:36:24pm K:\VAN_Jurimilla\148288 - PINEHURST 005 - Phase 2B Pipeline CAD\DWG
This schematic is for informational purposes only. It is not intended to be used for construction or other purposes without the approval of the City of Hillsborough.



Hillsborough Water Main: Segment 2



State Road 776 Wastewater Force Main

Project:

A new 16 to 20-inch force main.
This is a 2020 Sales Tax project.

Location:

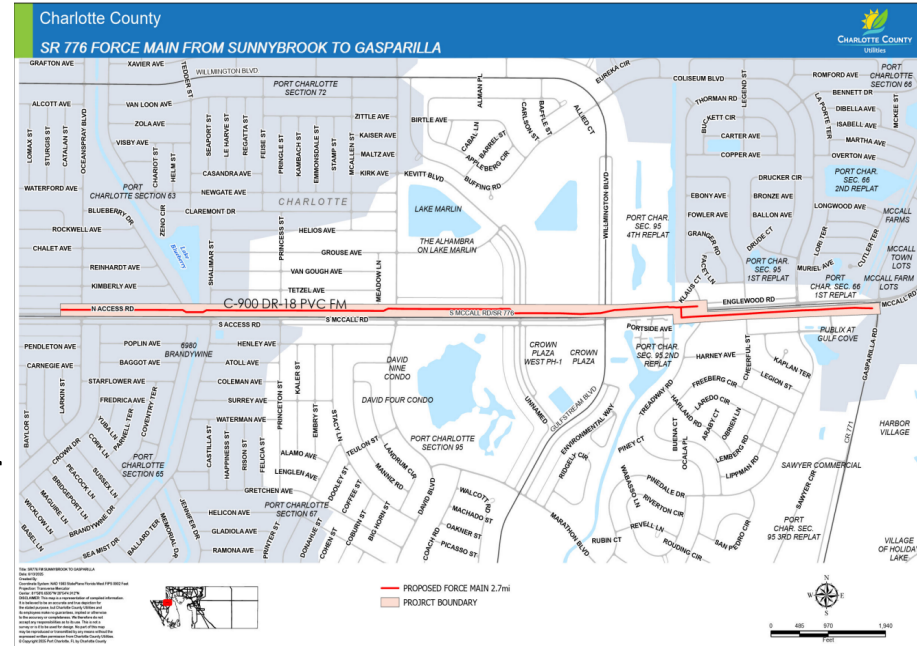
State Road 776 from Sunnybrook Boulevard to Gasparilla Road.

Benefit:

Increase capacity to meet the residential and commercial growth of this area and redirect flow away from Englewood Water District.

Status:

- Currently in design.
- Sales tax allotment: \$1,000,000.



Ackerman - Water Quality Improvement

Project: Construction of a wastewater collection system to service approximately 1,300 properties with sewer service, new water service lines and a vacuum station.

Location: Ackerman MSBU area.

Benefit:

Improved resilience and environmental protection. A central sewer system delivers more reliable sewage disposal, greater convenience for customers and better protects local water quality from nutrient runoff.

Status:

- Currently in construction.
- Plumbing contract 5 is with Purchasing Department.
- Plumbing contract 6 recommended for Board approval.
- Working with outside counsel: Neighbors, Giblin & Nickerson P.A.
- Planning a future Board workshop.
- Exploring options for performing the residential connections; Utilities' in-house construction crew vs. a contractor.
- Total budget: \$51,693,929.23.



Lakeview/Midway - Water Quality Improvement

Project:

A future septic to sewer MSBU that will include sewer and water initiatives:

- North area – 1,545 Occupied Lots
- South area – 704 Occupied Lots

Location:

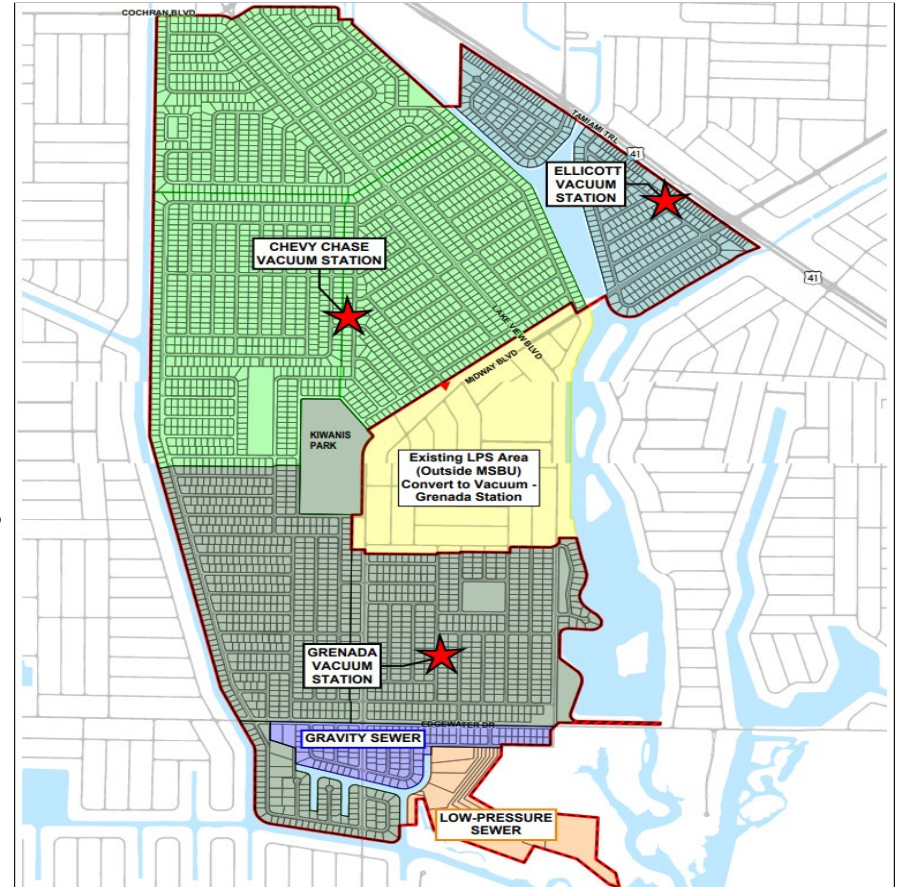
Communities surround Lakeview and Midway Boulevards.

Benefit:

Improved resilience and environmental protection. This program delivers more reliable sewage disposal, greater convenience for customers and better protects local water quality from nutrient runoff.

Status:

- Currently in design.
 - Estimated design completion: January 2027.



Treatment Facility Improvements



Burnt Store Water Reclamation Facility Expansion

Project: Increasing wastewater treatment capacity to meet the needs of this growing service area. A packaged treatment plant will be implemented followed by a permanent expansion.

Location: Burnt Store Water Reclamation Facility.

Benefit:

- Immediate service needs met by the packaged plant.
- Permanent solution will increase capacity from .5 MGD to 1.25 MGD while achieving Advanced Wastewater Treatment (AWT).
- Board supported the consultant's permanent expansion recommendation, the most cost effective over the long term.

Status:

- Construction Manager at Risk (CMAR) is in the process of purchasing the first temporary unit.

Full update provided in the Burnt Store WRF expansion presentation.



West Port Water Reclamation Facility Expansion

Project: The West Port Water Reclamation Facility was last upgraded in 2004. Since then, this area of Charlotte County has experienced significant growth.

Location: West Port Water Reclamation Facility.

Benefit: Increasing treatment capacity better meets the wastewater disposal needs of this service area. Advanced Wastewater Treatment (AWT) will produce higher quality reclaimed water.

Status:

- Currently in design.
- A recent Capacity Analysis Report (CAR) shows the plant is projected to surpass capacity in 2029.
- Exploring expansion options, such as expansion in one phase instead of two.
- Will utilize a Construction Manager at Risk (CMAR).



East Port Water Reclamation Facility Expansion

Project: Last upgraded in 1996, this expansion will better meet mid-county's wastewater disposal needs. Permitted for 6 MGD, the current 12-month average flow is 5.476 MGD.

Location: East Port Water Reclamation Facility.

Benefit: Increasing treatment capacity to 9 MGD will better meet the wastewater disposal needs of this service area. Advanced Wastewater Treatment (AWT) will produce higher quality reclaimed water.

Status:

- Currently in construction.
- 73% complete.
- Cost: \$106,188,600
- Construction expected through 2026.



East Port Progress Pictures



Credit and Collection Policy



Credit and Collection Policy

- The Credit and Collection Policy, Resolution 2007-179, required updating due to Board direction regarding loans.
- Policy has been revised by staff and is ready for approval.
- Will be submitted for Board approval pending resolution approval from the public hearing.

Transition to New Work Site



New Administrative Work Site

- New facility for Utilities Department staff displaced by hurricane damage to Building 'A' at Harborview Road.
- Address: 3280 South Tamiami Trail, Unit 505. (At the former site of the Charlotte County Sheriff's Office).
- Transition for staff is underway, supported by Facilities Management.
- Communications will inform customers of the new location for walk-in support.



A large, stylized graphic in the background features a yellow sun with rays on the left, a light green leaf on the right, and a light blue curved shape at the bottom, all overlapping. The word "Questions?" is centered over this graphic in a blue, sans-serif font.

Questions?



CHARLOTTE COUNTY
FLORIDA