

A stylized graphic featuring a yellow sun with rays and a green leaf, both partially obscured by a white circular outline. The background is white with a light blue wave-like shape at the bottom.

School Zone Speed Detection Program

Transportation Workshop
February 12, 2026



CHARLOTTE COUNTY
FLORIDA

OVERVIEW

The School Zone Speed Detection Program is scheduled to launch its warning period on **February 27th**, for its **first phase** of schools.

Elementary Schools:

Deep Creek

Liberty

Neil Armstrong

Peace River

Middle Schools:

L.A. Ainger

Murdock

Port Charlotte

High Schools:

Lemon Bay

Port Charlotte

Once these initial sites are activated, installation efforts will continue across the remaining public schools as part of our second phase of installations. These remaining locations are planned to be brought online concurrently upon completion of installation.

LAUNCH PHASES

Phase One: Feb 27th

- Deep Creek Elementary
- Liberty Elementary
- Neil Armstrong Elementary
- Peace River Elementary
- LA Ainger Middle
- Murdock Middle
- Port Charlotte Middle
- Lemon Bay High
- Port Charlotte High

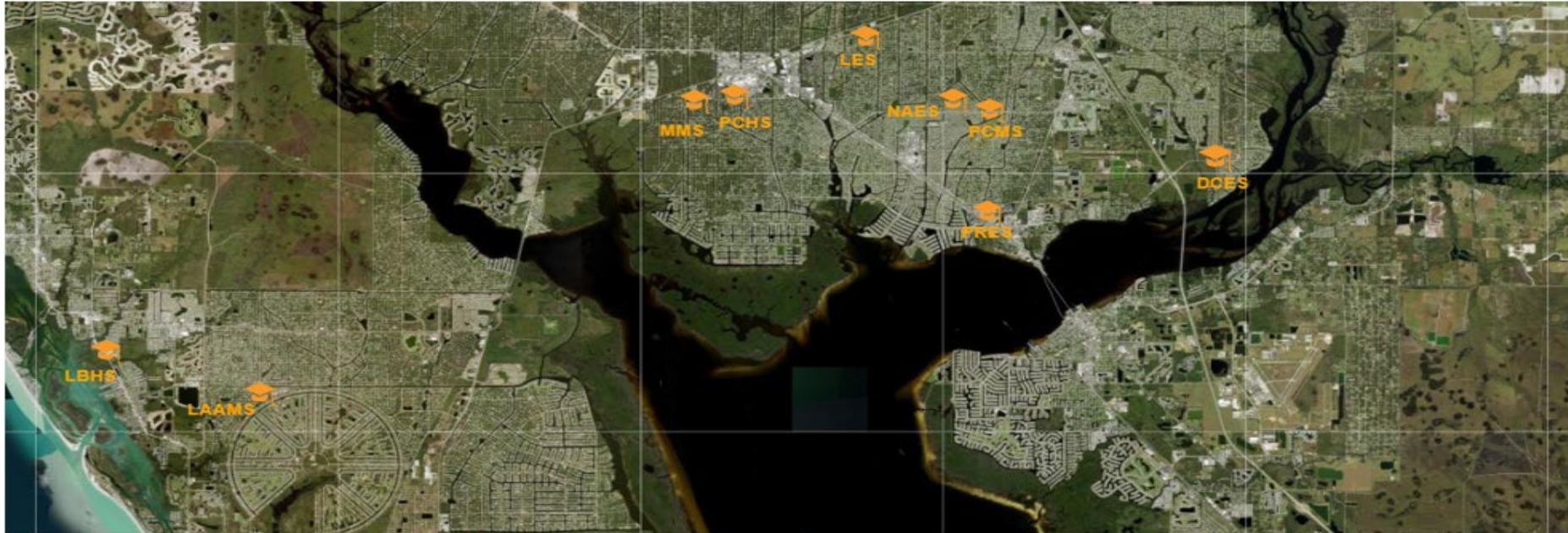
Phase Two: TBD

- East Elementary
- Kingsway Elementary
- Myakka River Elementary
- Meadow Park Elementary
- Vineland Elementary

Launches to follow

- Babcock Ranch NS
- Other Private Schools





SCHOOL NAME	LAUNCH DATE	SCHOOL NAME	LAUNCH DATE
Deep Creek Elementary School	2/27/2026	L.A. Ainger Middle School	2/27/2026
Liberty Elementary School	2/27/2026	Murdock Middle School	2/27/2026
Neil Armstrong Elementary School	2/27/2026	Port Charlotte Middle School	2/27/2026
Peace River Elementary School	2/27/2026	Lemon Bay High School	2/27/2026
		Port Charlotte High School	2/27/2026



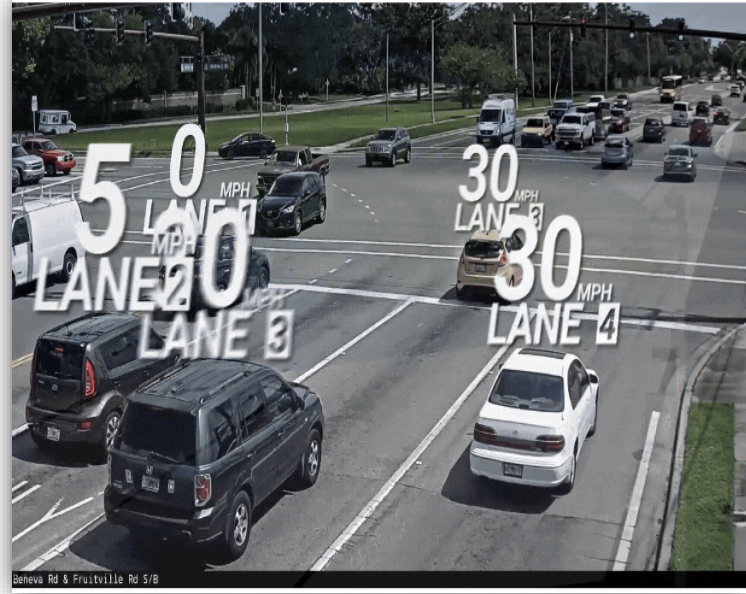


SCHOOL NAME	LAUNCH DATE	SCHOOL NAME	LAUNCH DATE
East Elementary School	TBD	Myakka River Elementary School	TBD
Kingsway Elementary School	TBD	Meadow Park Elementary School	TBD
Vineland Elementary School	TBD	Babcock Neighborhood School	TBD

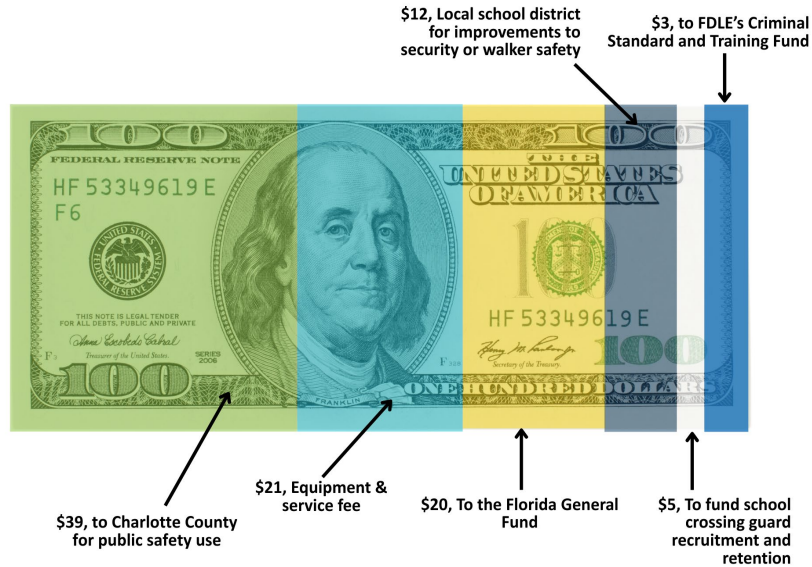
BENEFITS & VALUE

These systems will help reinforce safe driving behavior in school zones.

- Reinforcing safe driving behavior in school zones.
- Encouraging motorists to maintain appropriate speeds.
- Improving safety for pedestrians and cyclists through photo enforcement.



BENEFITS & VALUE



The program is self-funded.

- It operates without drawing on general revenues.
- Expected to generate funding for reinvestment in broader public safety initiatives including hazardous walking conditions for school aged children.
- Provides financial support for:
 - The school district and individual schools
 - Crossing guard retention efforts
 - Florida Department of Law Enforcement (FDLE) training needs

OPERATIONAL COSTS

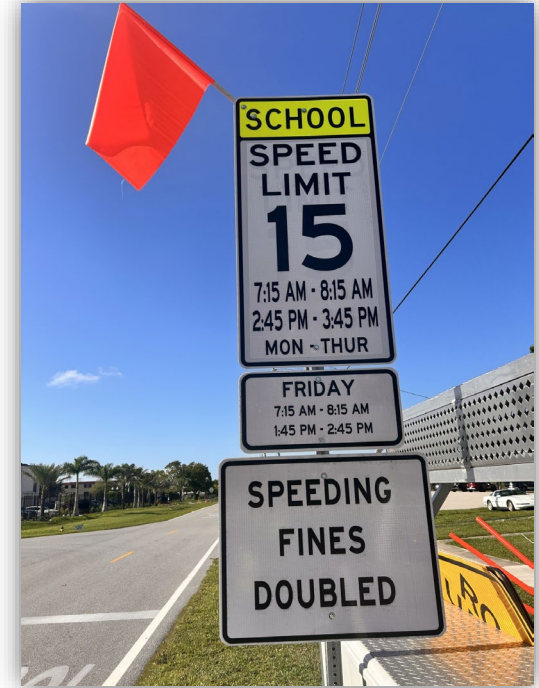
- There are no direct costs associated with system usage.
- Additional costs may be incurred due to expanded responsibilities for:
 - County Attorney
 - CCSO Traffic Enforcement Officers
 - Public Works acting as Clerk
 - Special Magistrate
- A hearing administrative fee will be assessed for violators who contest their notice and retain the “guilty” verdict.
- Staff has done an audit and will continue to monitor:
 - Number of violations
 - Potential revenue generation
 - Overall program-related costs



ENFORCEMENT SAFEGUARDS

School Zone Notifications

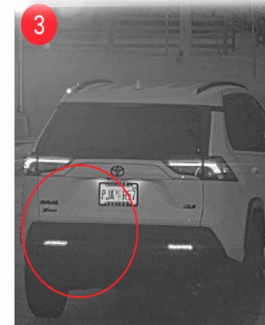
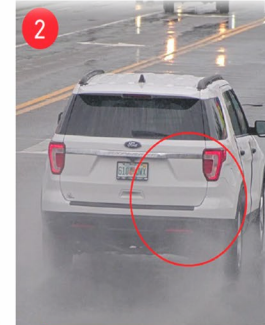
- Public Works installed secondary signage at each location to clearly display enforceable school zone times.
- RedSpeed will install additional signage to identify entry into enforcement zones.
- All school zones have been reviewed and updated to ensure compliance with current standards
- A new beacon management system is being implemented to:
 - Provide real-time monitoring of beacon status
 - Improve response capability



ENFORCEMENT SAFEGUARDS

Insurance for Non-violators

- The systems have safeguards in place to prevent issuance to non-violators. All potential violations go through a 3-stage human review process, following the RedCheck system's AI Review. Training has been provided and will continue to be provided to all pertinent staff.



CITY LOCATIONS

What about Schools Located in the City of Punta Gorda?

The City of Punta Gorda's school locations will launch separately when the City has completed its contract.



ADDITIONAL LOCATIONS

Can additional schools be added?

Following the program launch, private schools within the district will be reviewed for feasibility with RedSpeed.

Schools under review include:

Charlotte Preparatory

Family Christian Academy

Port Charlotte Adventist

St. Charles Borromeo Catholic



WARNING/CITATION DATES

When will we begin with warning and citation issuances?

Phase One:

- Warning period begins **February 27**
- Citation issuance begins **April 1**

Phase Two

- Timing to be determined



CONTESTING VIOLATIONS

DECLARATION OF NON-RESPONSIBILITY Photo Enforcement Program

This Declaration may not be used by employers/principals to transfer responsibility to their employees/agents. As a matter of law, a vehicle registered to an employer/principal that is driven by an employee remains in the "care, custody, and control" of the employer/agent and thus, the employer/principal is responsible for the payment of the penalty.

Notice Number: _____ License Plate Number: _____ State: _____

I received the above-referenced Notice of Infraction. At the time of the violation indicated in the Notice of Infraction, the vehicle described in the Notice was:

- Stolen
 Sold
 In the care, custody, or control of another person

The statement above rebuts the presumption of liability. You may also provide the following information to confirm non-responsibility: a police report (reflecting the vehicle was stolen), Report of Sale from the Department of Licensing (reflecting that the vehicle was sold), or the person who had care, custody, or control of the vehicle at the time of the violation:

Driver's Name: _____

Driver's Address: _____
Street City State ZIP

I declare under penalty of perjury under the laws of the State of Washington that the information provided in this Declaration is true and correct to the best of my knowledge.

Signed this ___ day of _____ (month), _____ (year) at _____ (city, state).

Your signature

Print your name Telephone number

Your street address City, State ZIP

Return the completed and signed Declaration to:

What is the violation penalty, and how do you contest it?

1. All violations carry a fee of \$100.
2. If violators wish to contest their violation, they may do so through the process provided on the violation notice.
3. Violators may submit a Declaration of Non-Responsibility, transferring the violation to another party.
4. Violators may also request a hearing for formal review.



VIOLATION HEARINGS

When are violation hearings, and what penalties are there?

- All violation hearings will be conducted on the first Wednesday of the month, beginning June 3rd, following the Code Enforcement hearings in Room 119, at our Murdock Administration Center.
- Before commencement, the petitioner will be presented with the ability to change their designation to guilty of the violation. Doing so at this time will result in a reduced administrative fee of \$100, in addition to their violation amount.
- Any violators who wish to proceed may present their case to the Special Magistrate, following the review of the system evidence. Violators found guilty will be required to pay their violation fine, as well as an administrative fee of \$250.



Summary

- The School Zone Speed Detection Program will enhance safety around our schools, reinforce proper speed compliance. Any funds generated will be dedicated to hazardous walking conditions and other public safety efforts.
- Our system is nearing its initial launch, with installations completed and key operational, legal, and public outreach components in place.
- We are scheduled to begin our **30-day warning period** on **February 27, 2026**, with our **citation period** beginning **April 1, 2026**, for all **Phase One locations**, with Phase Two's launch following as quickly as possible after.



THANK YOU

