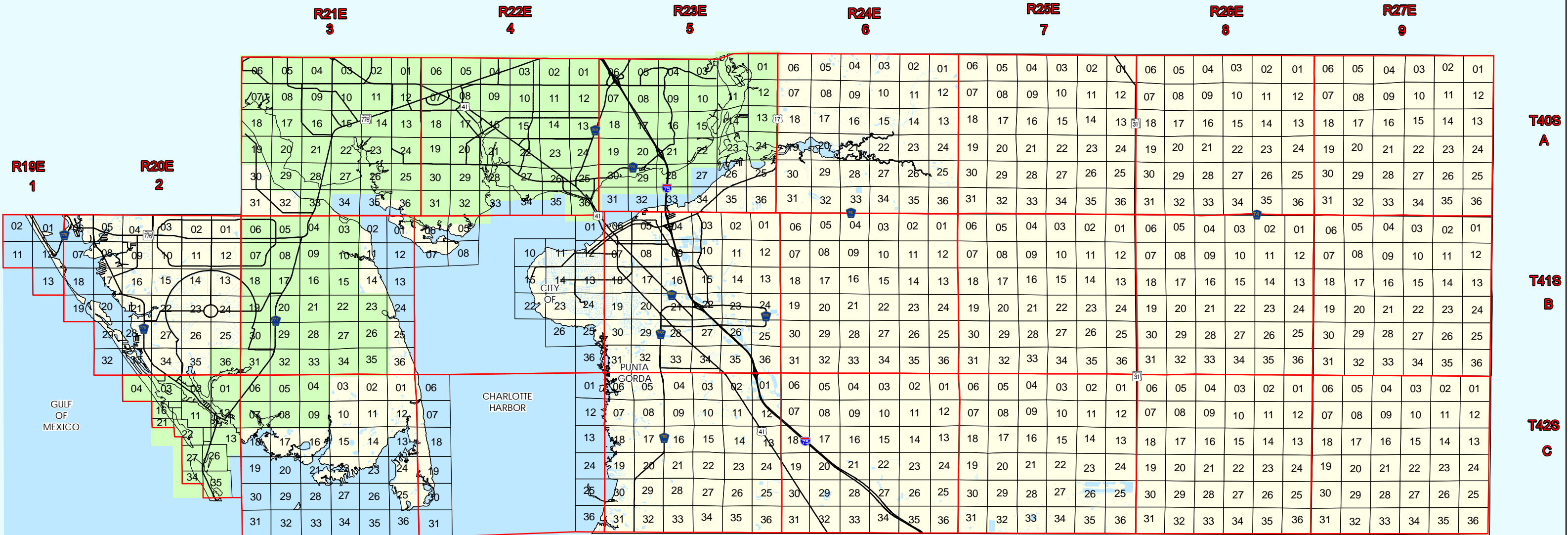




Land Information Section

CHARLOTTE COUNTY

1997 Aerial Coverage by Section, Township, and Range



Explanation of "Section-Township-Range"

Stateplane Projection
Datum: NAD83
Units: Feet

Source: GIS
ComDev

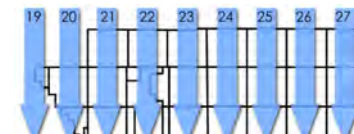
Metadata available
upon request



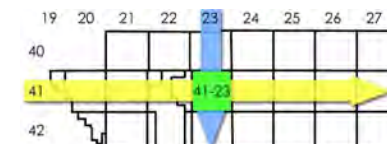
Sections are 36 1-square-mile Land Sections, bounded on the North and South by Township lines, and on the East and West by Range Lines.



Townships are rows, or "tiers" that are roughly 6 miles north-to-south, and run across the county.



Ranges are columns that are roughly 6 miles east-to-west, and run vertically through the county.



When used together, the "Township and Range" designation can be determined. In the example above, the green area lies in "Township" 41 and "Range" 23.



2 1 0 2 Miles