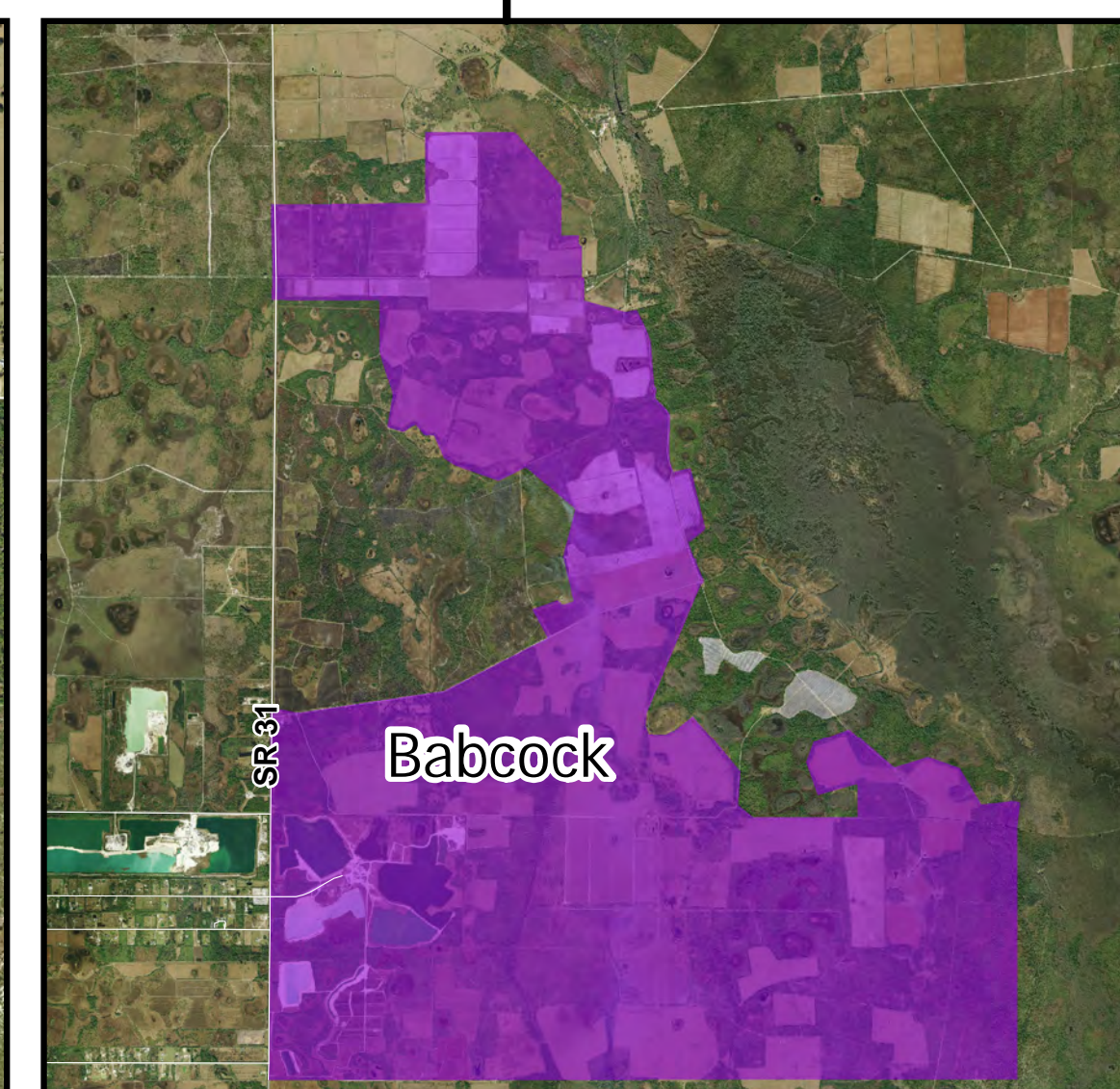
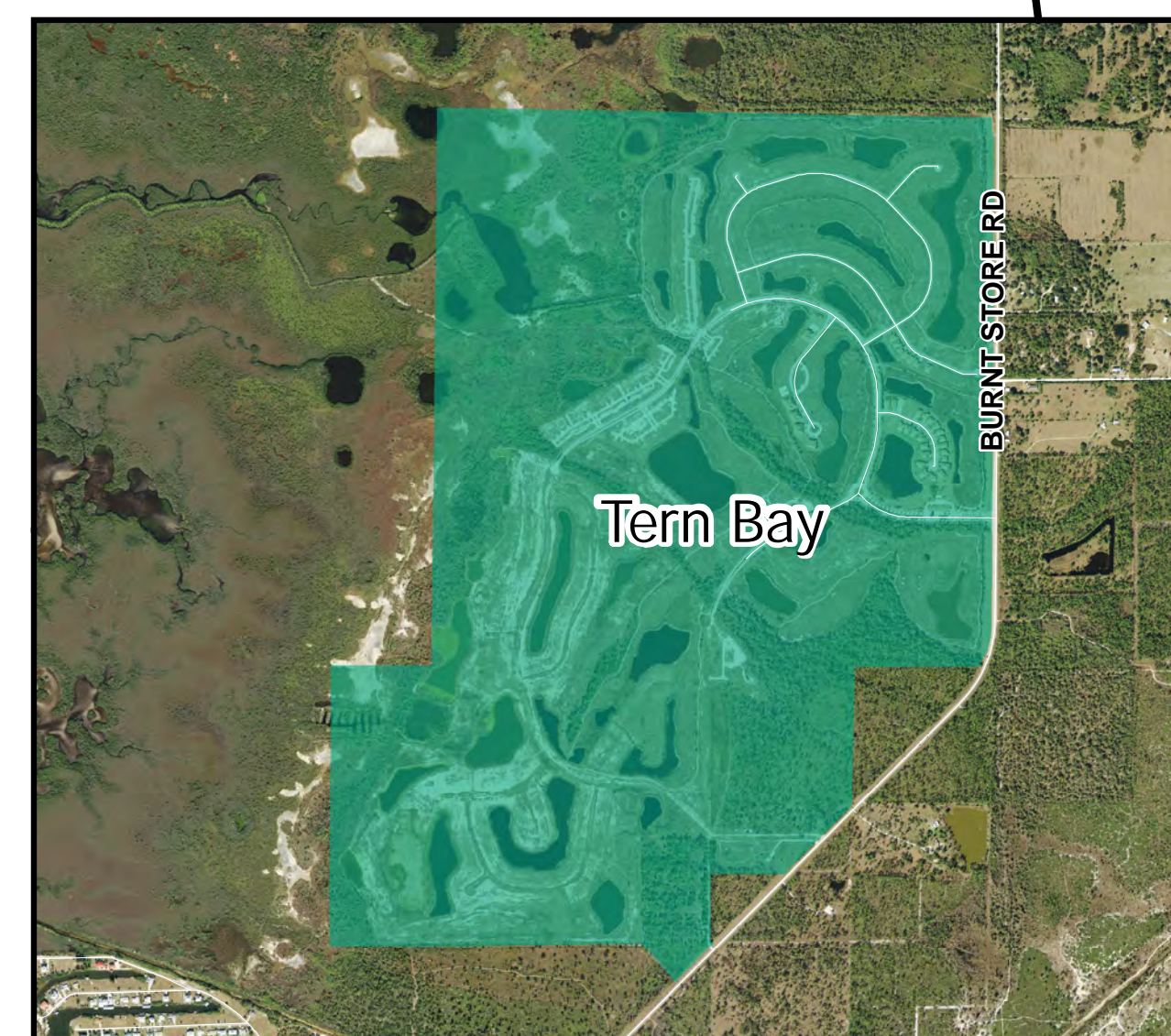
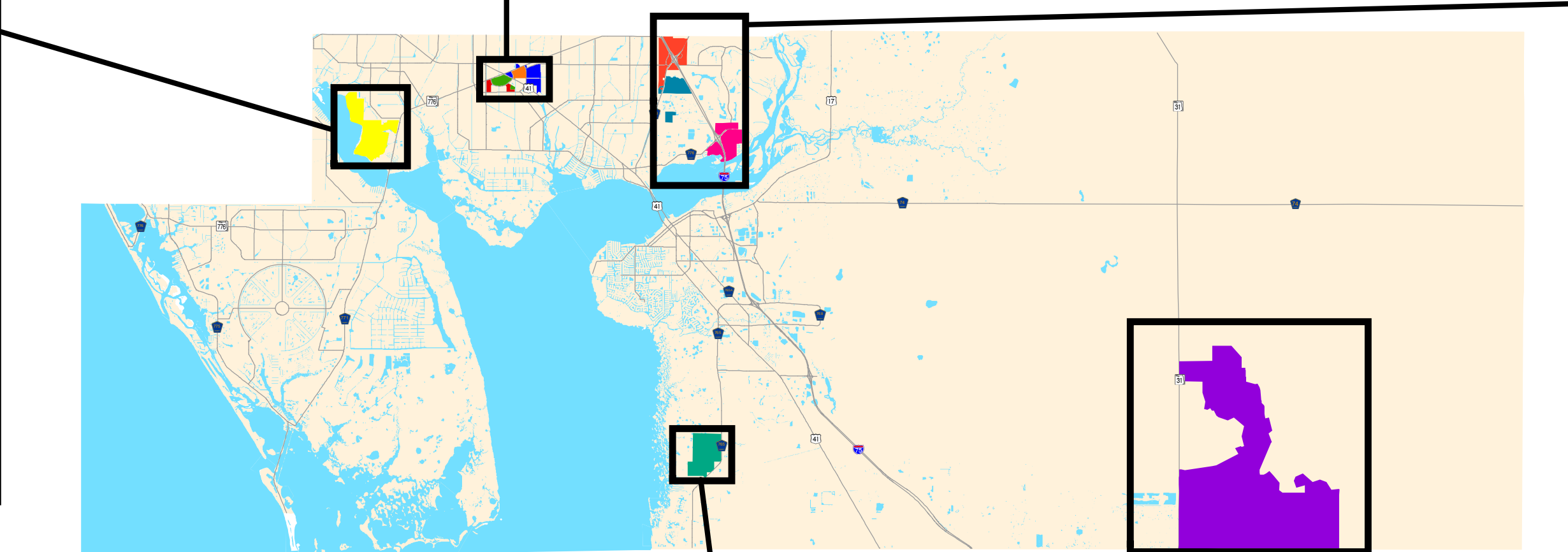
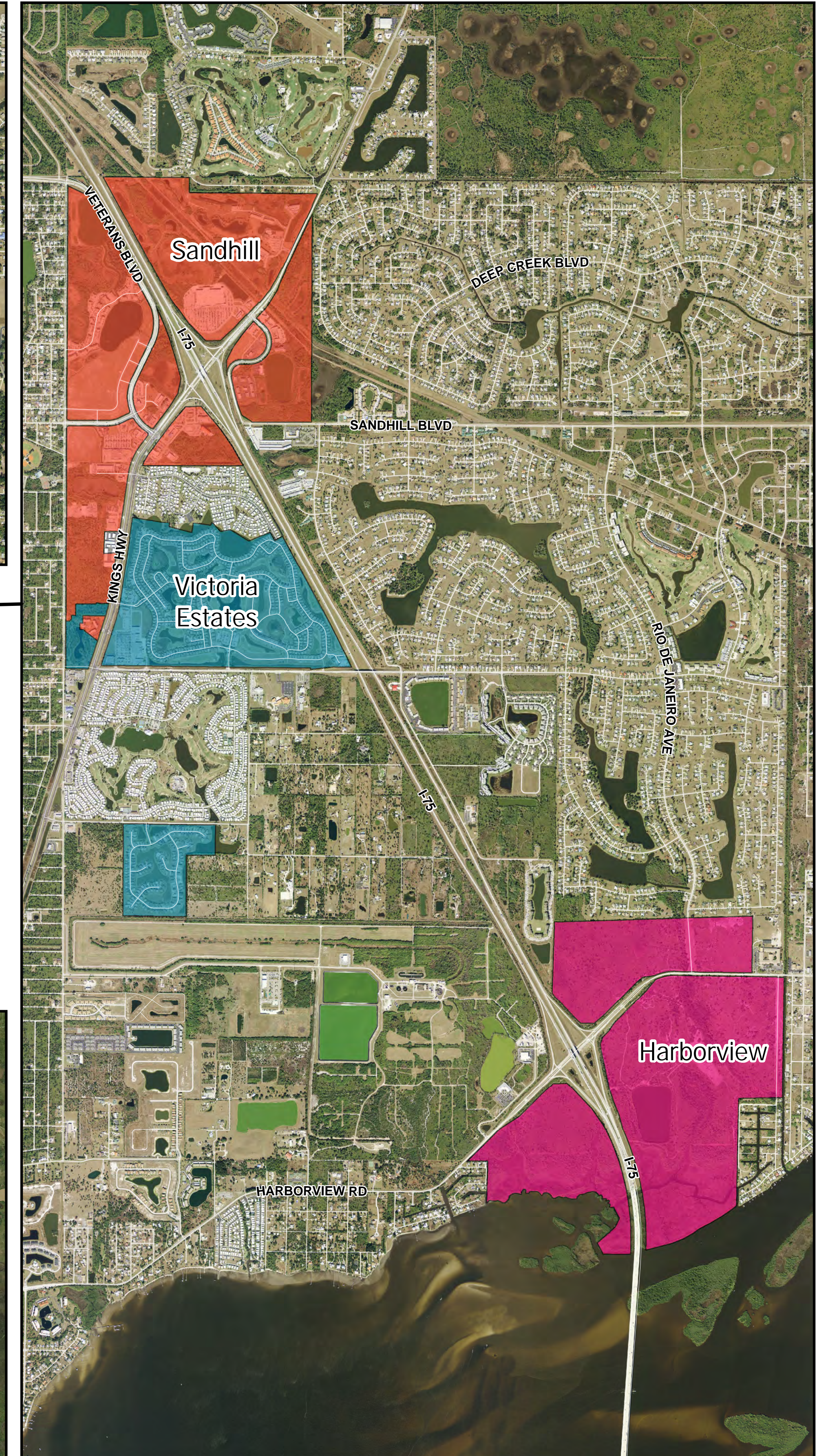
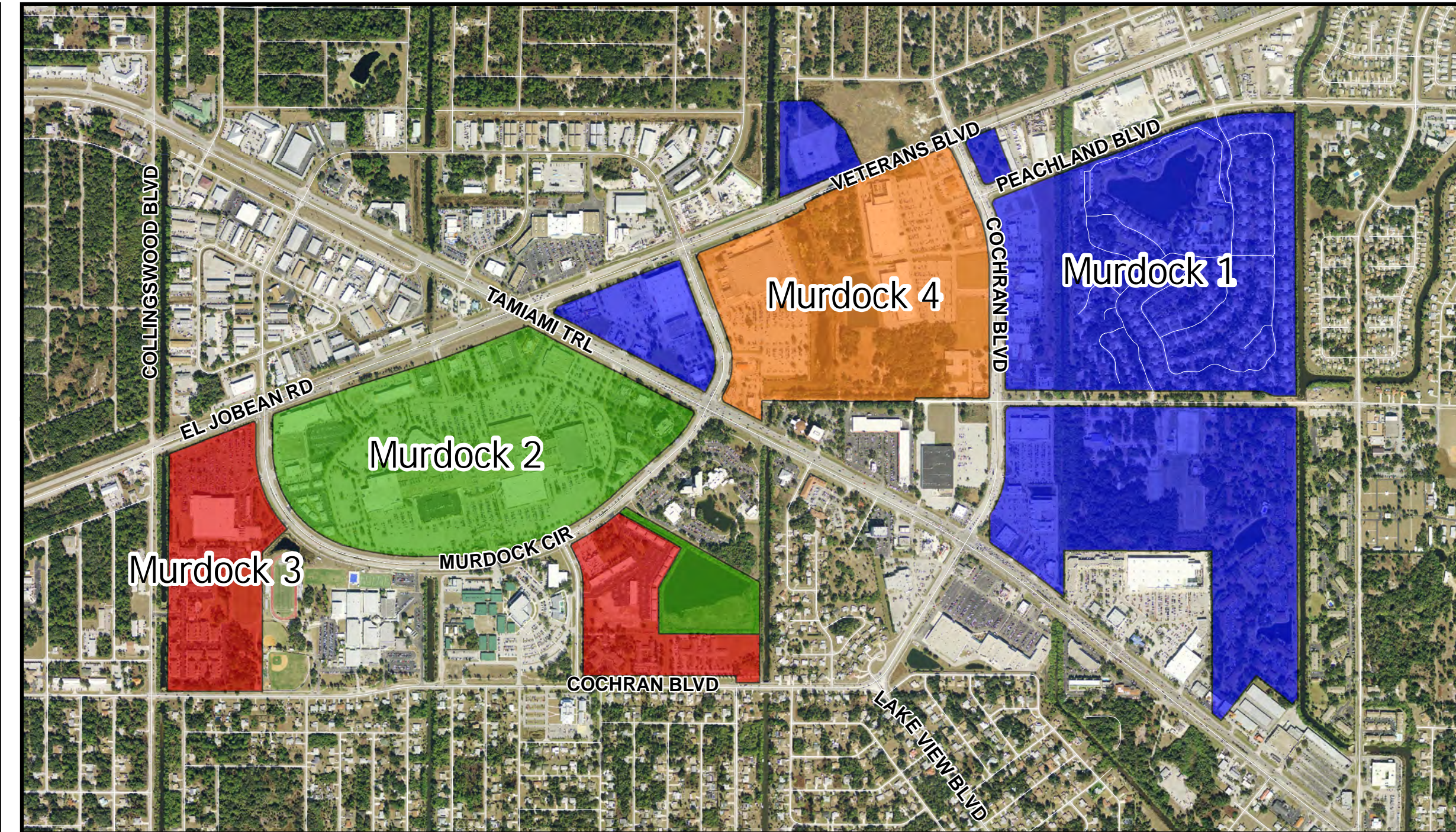
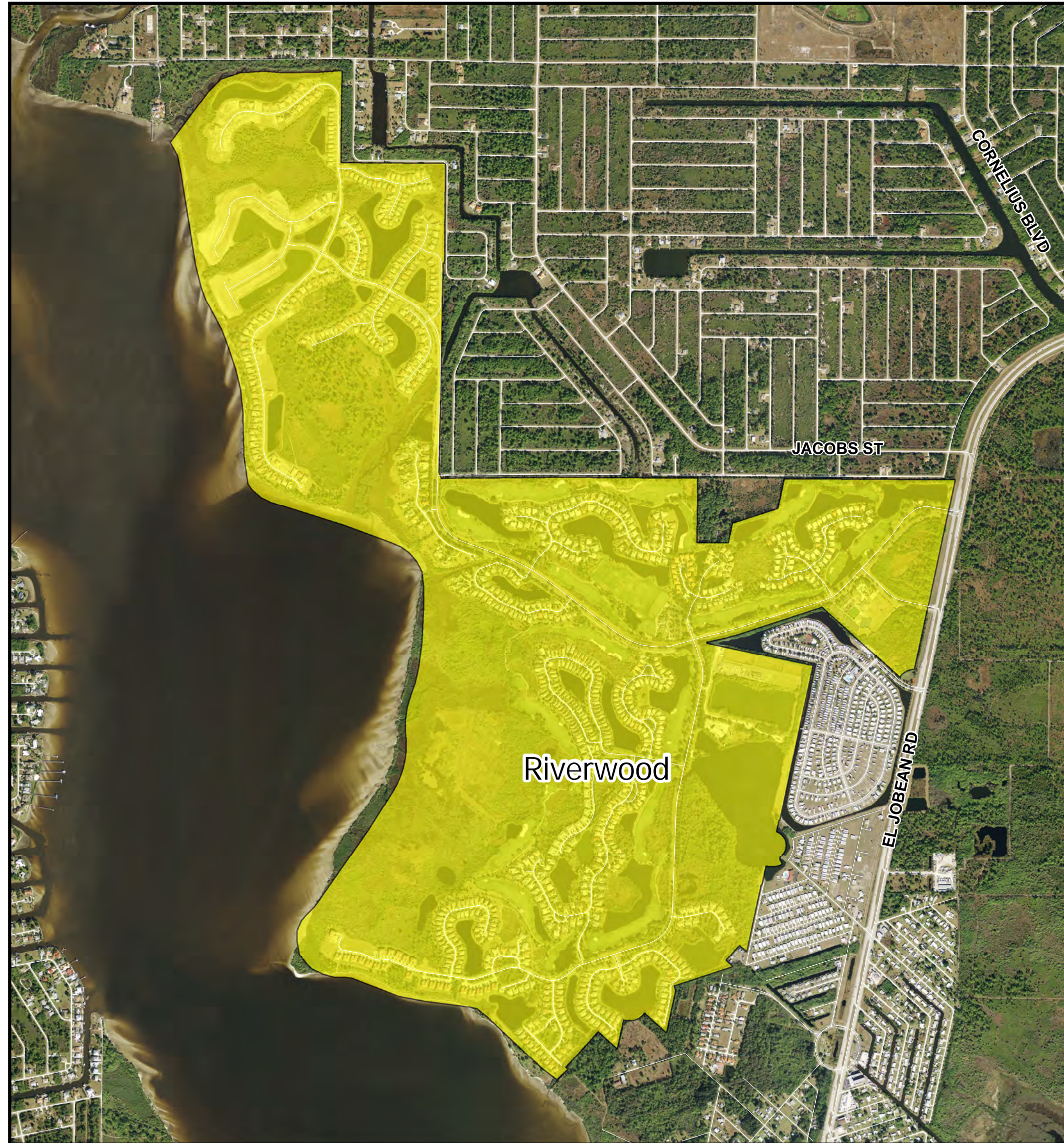




Land Information Section

# CHARLOTTE COUNTY

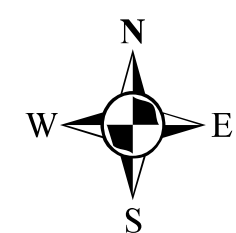
## Developments of Regional Impact (DRI's)



-  Murdock 1
-  Babcock
-  Murdock 2
-  Riverwood
-  Murdock 3
-  Sandhill
-  Murdock 4
-  Tern Bay
-  Harborview
-  Victoria Estates

© Copyright 2013 Port Charlotte, FL by Charlotte County

Updated: 5/3/2013 11:12:12 AM by: A. Steele



Not to Scale

Stateplane Projection  
Datum: NAD83  
Units: Feet

Source: Community Development, SWFMD

Metadata available upon request

M:\Departments\GIS\Projects\Maps\_Development\Active\_DRI\Active\_DRI.mxd

This map is a representation of compiled public information. It is believed to be an accurate and true depiction for the stated purpose, but Charlotte County and its employees make no guarantees, implied or otherwise, to the accuracy, or completeness. We therefore do not accept any responsibilities as to its use. This is not a survey or is to be used for design. Reflected Dimensions are for informational purposes only and may have been rounded to the nearest tenth. For precise dimensions, please refer to recorded plats and related documents.