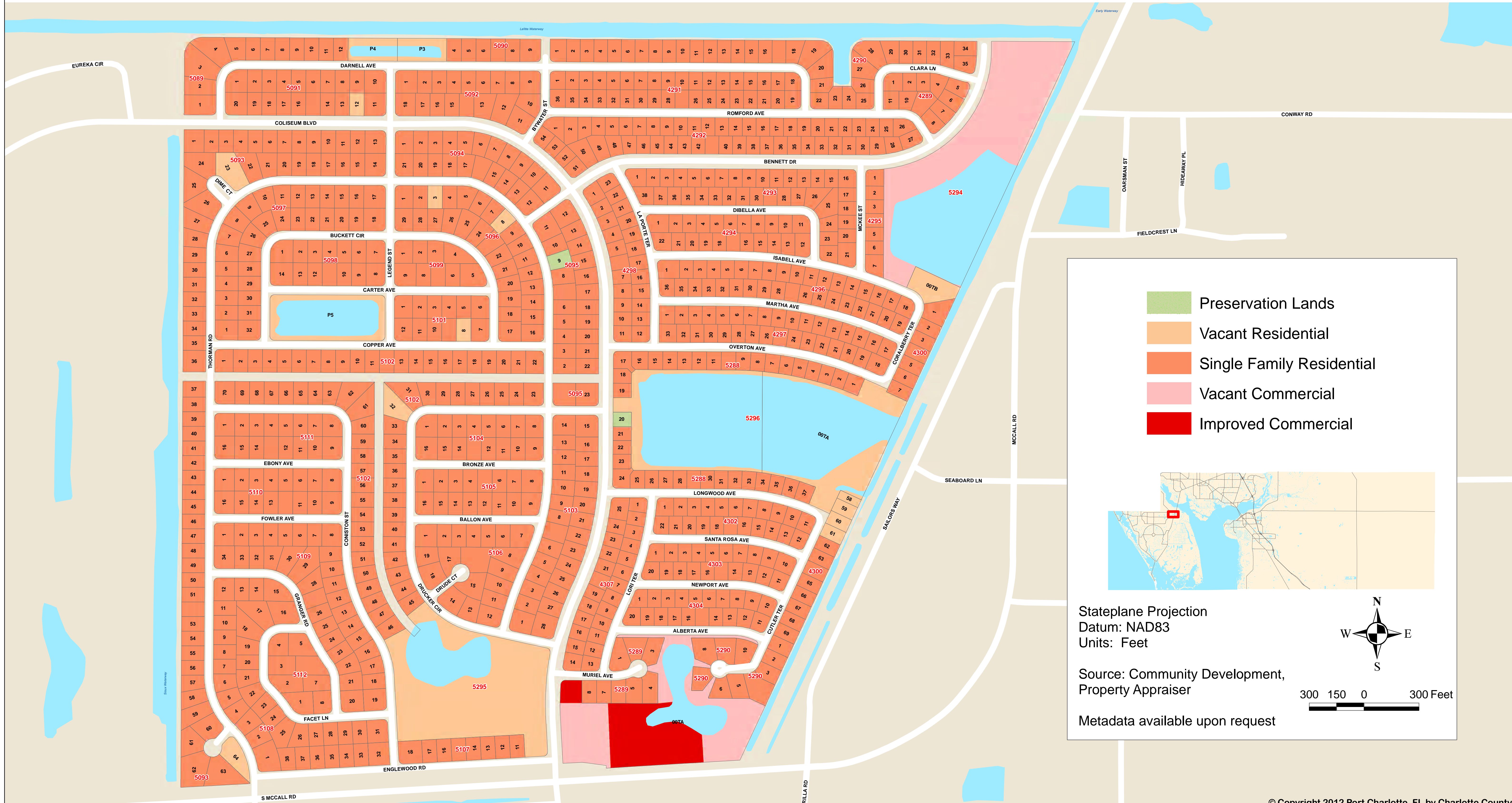




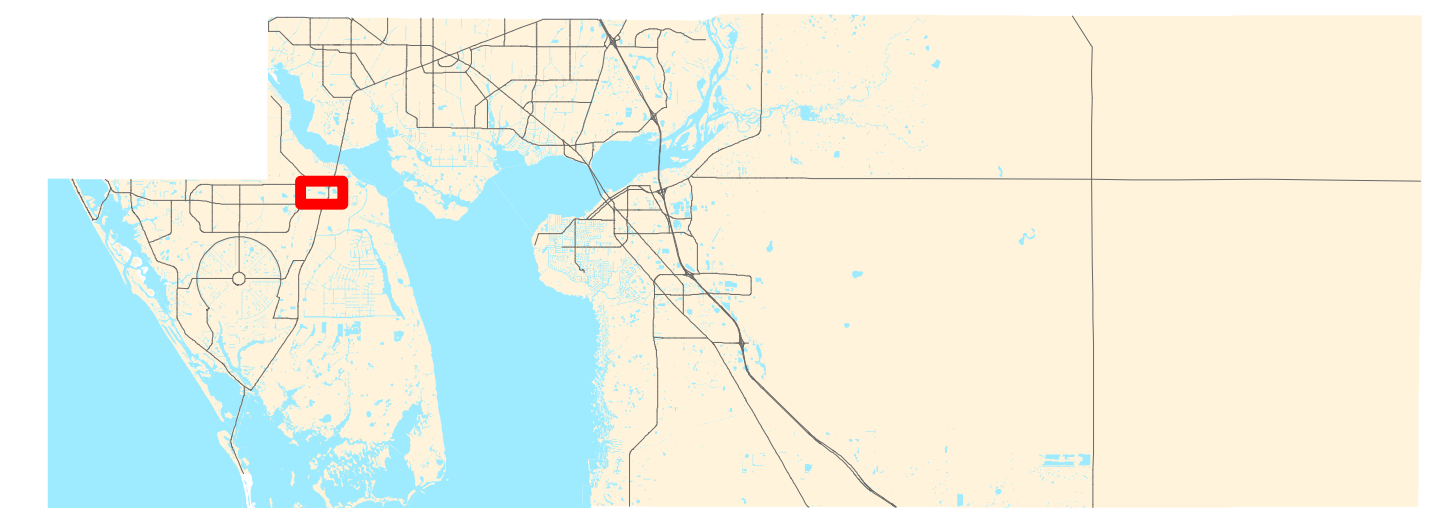
Land Information Section

CHARLOTTE COUNTY

Subdivision of Gardens of Gulf Cove



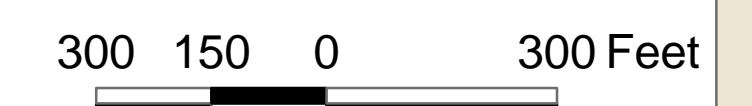
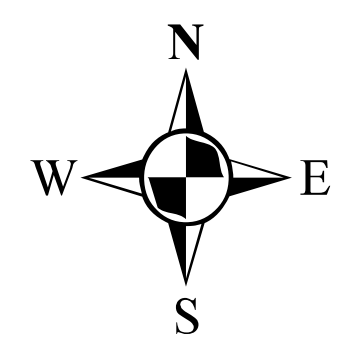
-  Preservation Lands
-  Vacant Residential
-  Single Family Residential
-  Vacant Commercial
-  Improved Commercial



Stateplane Projection
Datum: NAD83
Units: Feet

Source: Community Development,
Property Appraiser

Metadata available upon request



This map is a representation of compiled public information. It is believed to be an accurate and true depiction for the stated purpose, but Charlotte County and its employees make no guaranties, implied or otherwise, to the accuracy, or completeness. We therefore do not accept any responsibilities as to its use. This is not a survey or is it to be used for design. Reflected Dimensions are for Informational purposes only and may have been rounded to the nearest tenth. For precise dimensions, please refer to recorded plats and related documents.