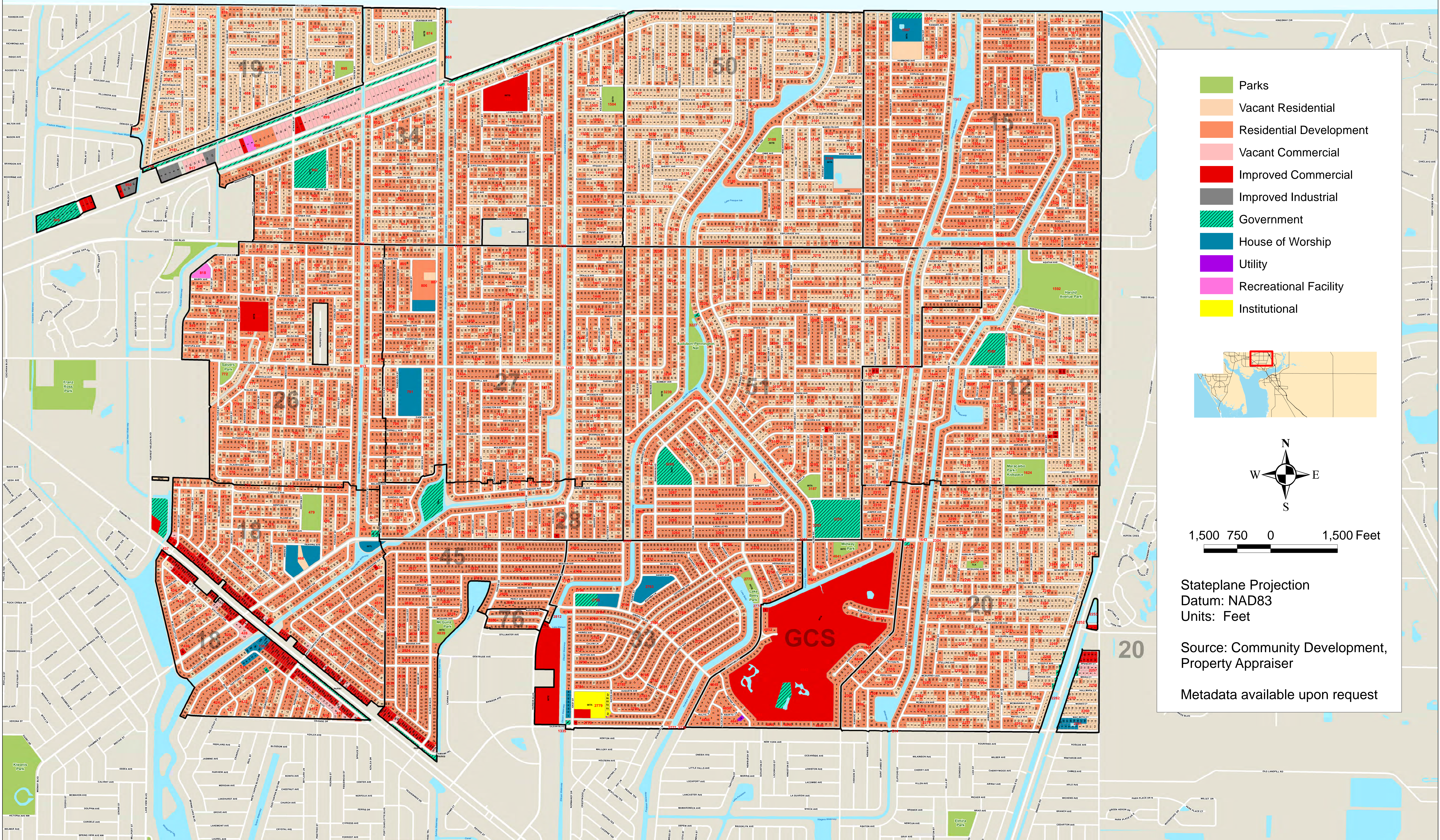




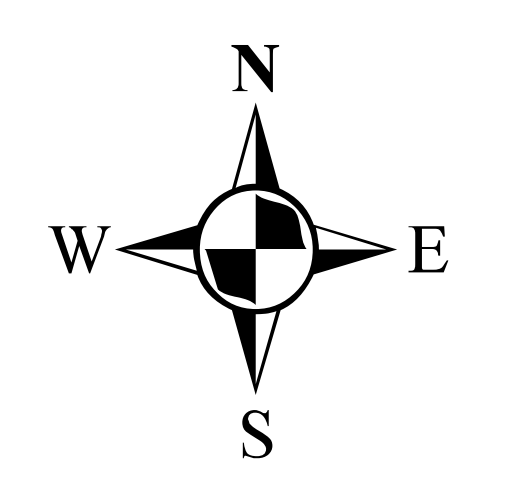
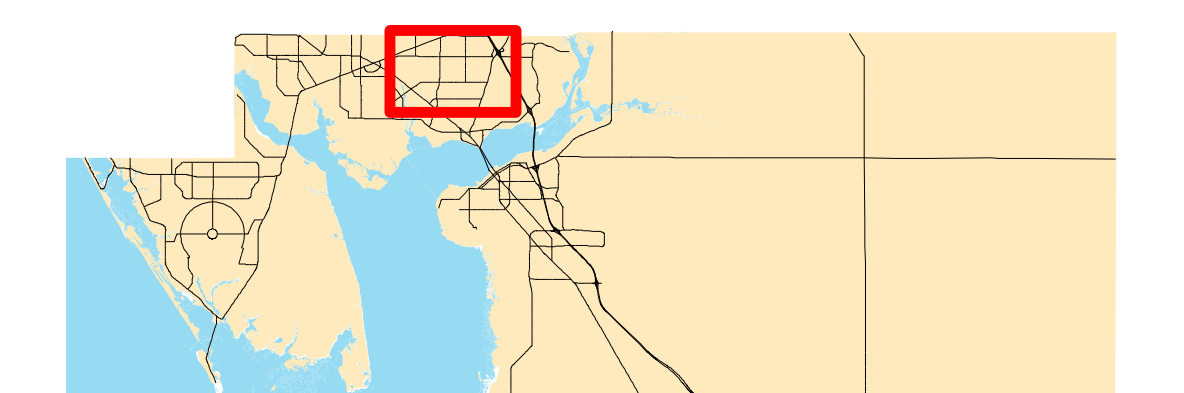
# CHARLOTTE COUNTY

## Port Charlotte Sections 12, 15, 18, 20, 26, 28, 33, 34, 45, 50, 51, 76 and GCS

Land Information  
Section



- Parks
- Vacant Residential
- Residential Development
- Vacant Commercial
- Improved Commercial
- Improved Industrial
- Government
- House of Worship
- Utility
- Recreational Facility
- Institutional



1,500 750 0 1,500 Feet

Stateplane Projection  
Datum: NAD83  
Units: Feet

Source: Community Development,  
Property Appraiser

Metadata available upon request

This map is a representation of compiled public information. It is believed to be an accurate and true depiction for the stated purpose, but Charlotte County and its employees make no guaranties, implied or otherwise, to the accuracy or completeness. We therefore do not accept any responsibilities as to its use. This is not a survey or is it to be used for design. Reflected Dimensions are for informational purposes only and may have been rounded to the nearest tenth. For precise dimensions, please refer to recorded plats and related documents.