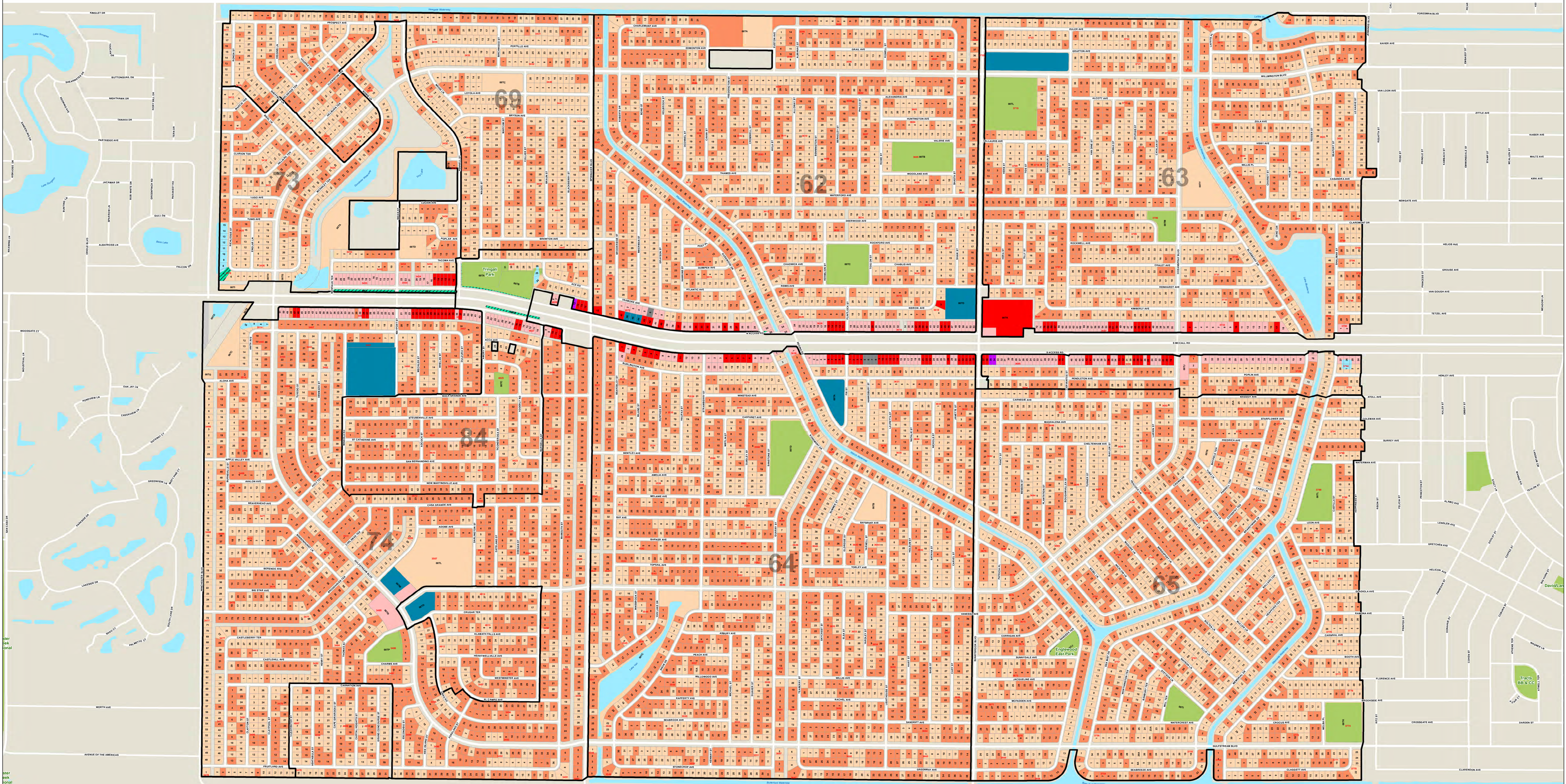




CHARLOTTE COUNTY

Port Charlotte Sections 62, 63, 64, 65, 69, 73, 74 and 84

Land Information
Section

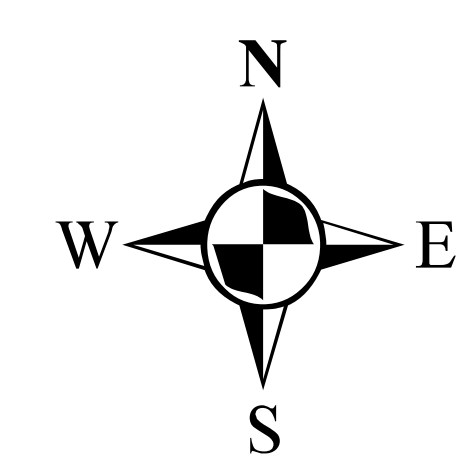
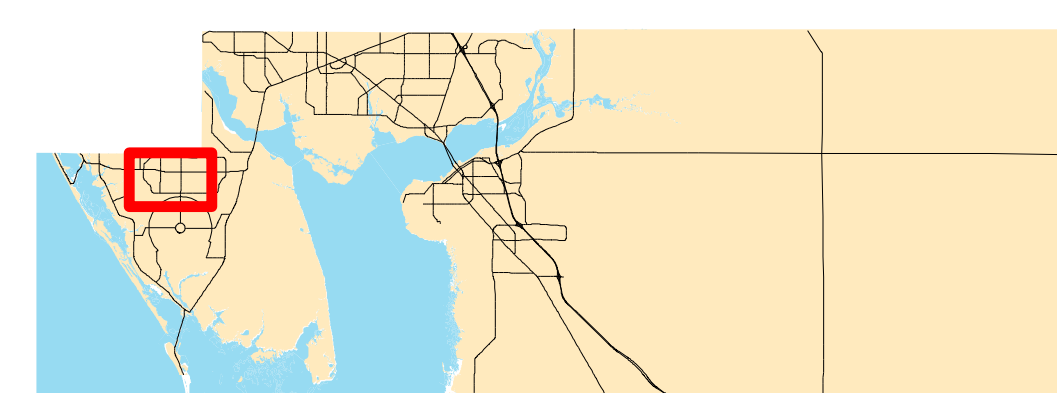


Stateplane Projection
Datum: NAD83
Units: Feet

Source: Community Development,
Property Appraiser

Metadata available upon request

	Parks		Vacant Industrial
	Vacant Residential		Improved Industrial
	Residential Development		Government
	Vacant Commercial		House of Worship
	Improved Commercial		Utility



This map is a representation of compiled public information. It is believed to be an accurate and true depiction for the stated purpose, but Charlotte County and its employees make no guaranties, implied or otherwise, to the accuracy, or completeness. We therefore do not accept any responsibilities as to its use. This is not a survey or is it to be used for design. Reflected Dimensions are for Informational purposes only and may have been rounded to the nearest tenth. For precise dimensions, please refer to recorded plats and related documents.