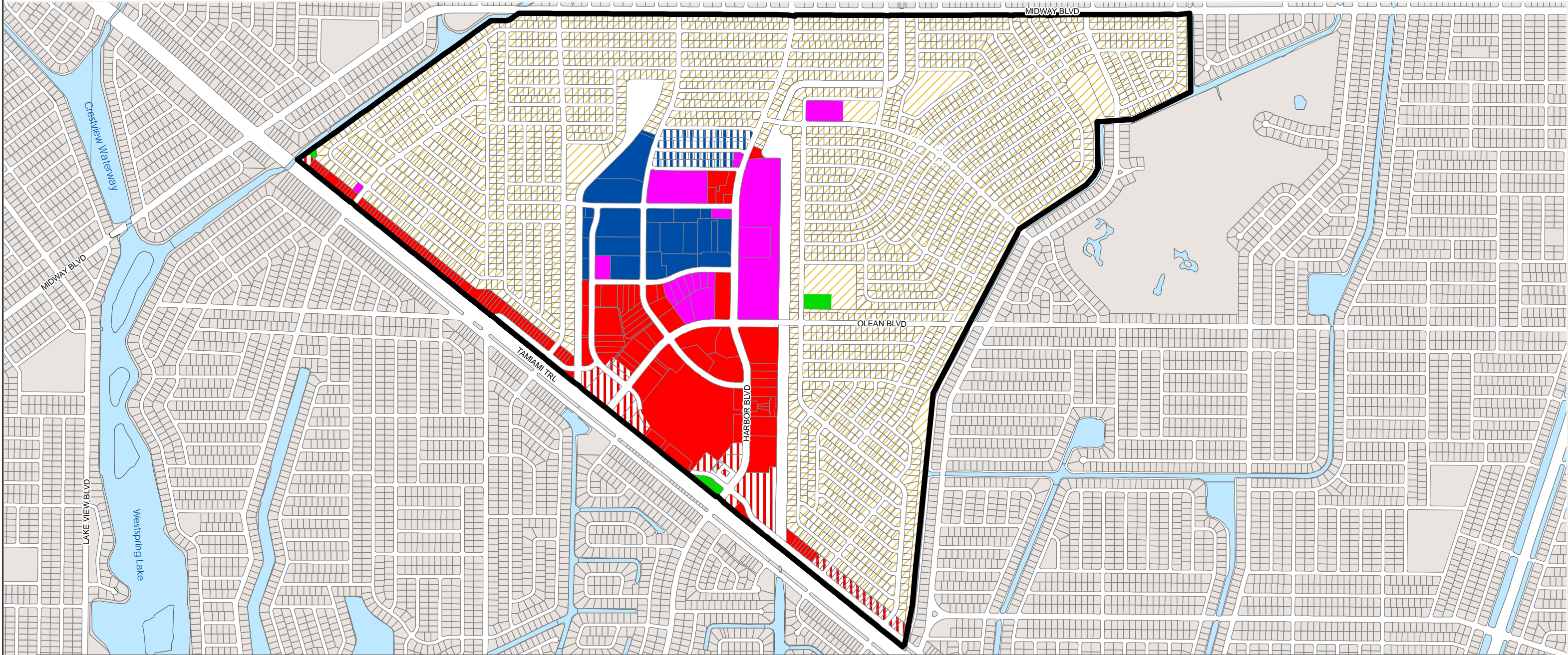




Land Information Section

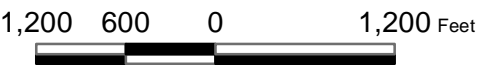
Parkside Community Redevelopment Area Zoning



Stateplane Projection
Datum: NAD83
Units: Feet
Source: CCGIS, Community Development
Metadata available upon request

Zoning Districts

- RSF3.5
- RMF15
- CI
- PD
- RMF10
- OMI
- CG



This map is a representation of compiled public information. It is believed to be an accurate and true depiction for the stated purpose, but Charlotte County and its employees make no guarantees, implied or otherwise, to the accuracy or completeness. We therefore do not accept any responsibility as to its use. This is not a survey, nor is it to be used for design. Reflected dimensions are for informational purposes only and may have been rounded to the nearest tenth. For precise dimensions, please refer to recorded plats and related documents. © Copyright 2011 Port Charlotte, FL by Charlotte County. Prepared 09/2011 by D. Vance.