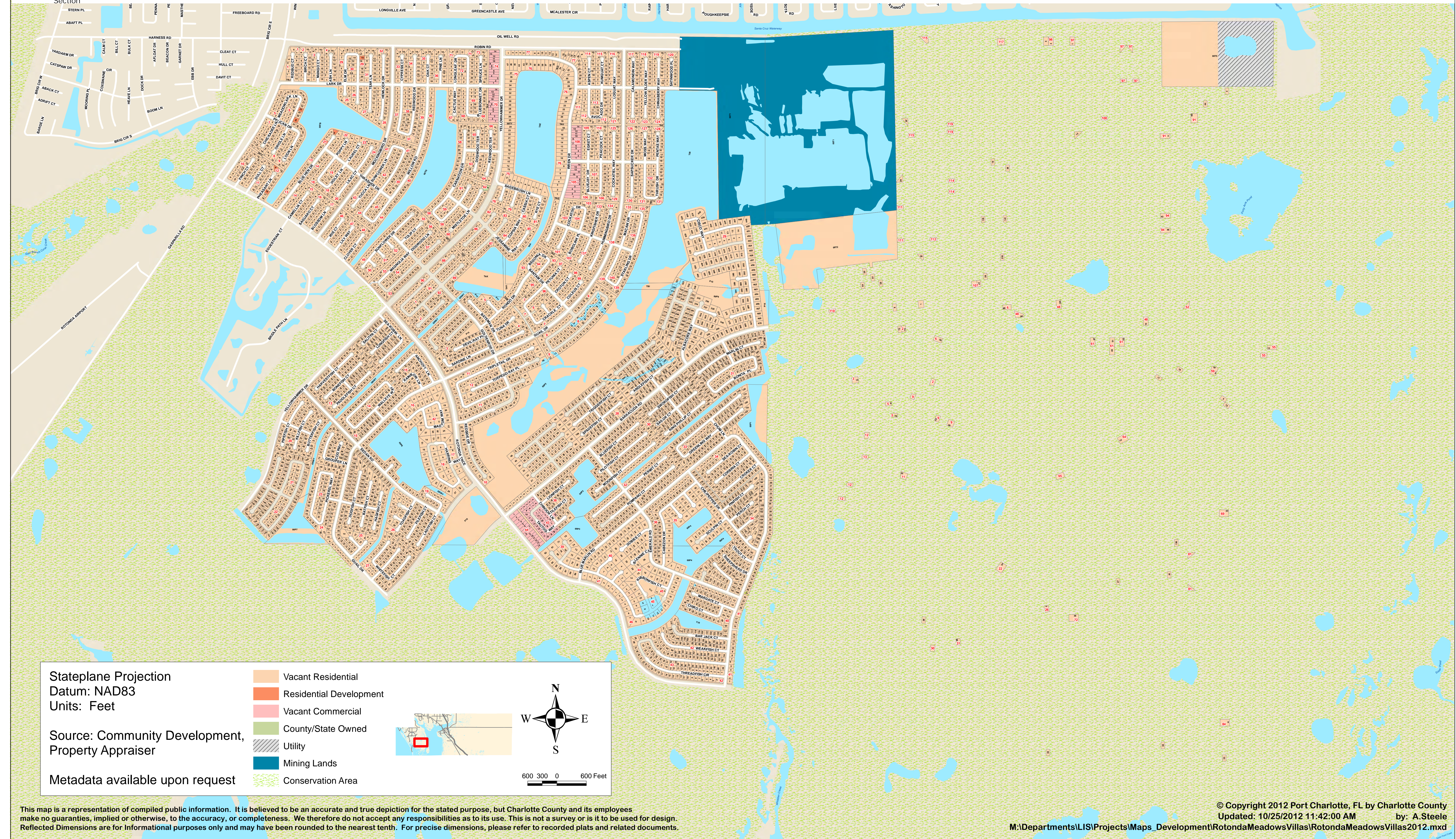




CHARLOTTE COUNTY

Subdivisions of Rotonda Meadows/Springs/Villas

Land Information Section

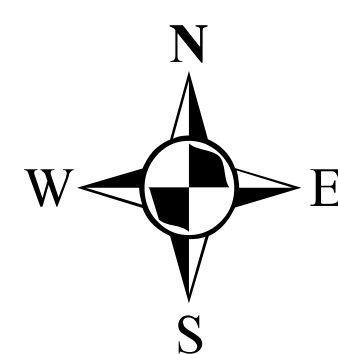
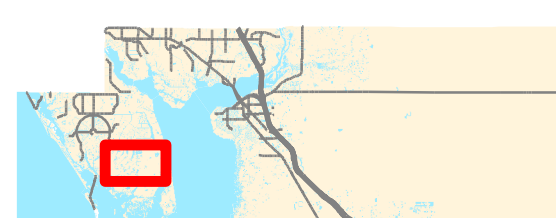


Stateplane Projection
 Datum: NAD83
 Units: Feet

Source: Community Development,
 Property Appraiser

Metadata available upon request

- Vacant Residential
- Residential Development
- Vacant Commercial
- County/State Owned
- Utility
- Mining Lands
- Conservation Area



600 300 0 600 Feet

This map is a representation of compiled public information. It is believed to be an accurate and true depiction for the stated purpose, but Charlotte County and its employees make no guarantee, implied or otherwise, to the accuracy, or completeness. We therefore do not accept any responsibilities as to its use. This is not a survey or is it to be used for design. Reflected Dimensions are for Informational purposes only and may have been rounded to the nearest tenth. For precise dimensions, please refer to recorded plats and related documents.