


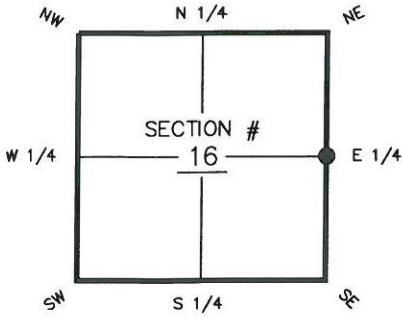
**FLORIDA DEPARTMENT OF ENVIRONMENTAL PROTECTION
CERTIFIED CORNER RECORD**

104912

DOC. # _____

CORNER DESCRIPTION: MONUMENTATION DESCRIPTION (EVIDENCE FOUND OR METHOD TO SET)

Depict corner with 

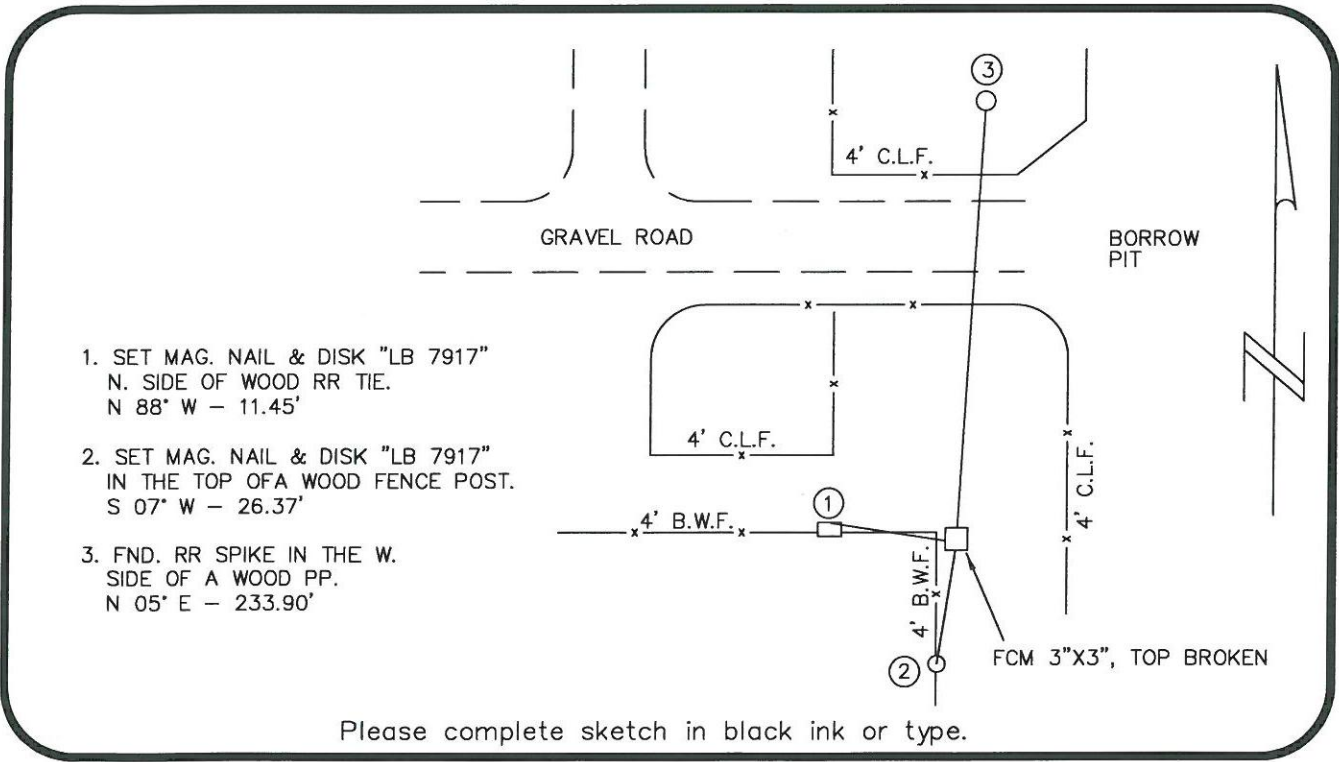


FOUND 3"x3" CONCRETE MONUMENT, TOP BROKEN.

E 1/4 corner of Section 16
Twp 41 S, Rge 23 E
Tallahassee Base Meridian,
CHARLOTTE County(s), Florida

HORIZONTAL POSITION INFORMATION (if determined):

Latitude 26° 54' 35.3929" N Longitude 82° 00' 20.6392" W
Y(NORTHING-Ft.) 936394.824 X(WESTING-Ft.) 654298.366 Zone WEST
Convergence -0° 00' 09.3411" Scale factor 0.99994118
Coordinate determination (circle one): Field traverse GPS
Horizontal datum (circle one): NAD27 NAD83(1986) NAD83(2007) other (explain)
Accuracy (circle one): 1st 2nd 3rd other _____



SURVEYORS CERTIFICATE:

I certify the monument and accessories indicated above were field located on 02/06/13

Ken Pappalardo
SIGNATURE
McKIM & CREED, INC.
FIRM OR AGENCY
5701 DIVISION DRIVE, SUITE A
ADDRESS
FORT MYERS CITY FLORIDA 33905 STATE ZIP
(239) 275-8875 PHONE NUMBER DATE 9/28/13

SEND ORIGINAL TO:
Department of Environmental Protection
Bureau of Surveying and Mapping
3900 Commonwealth Boulevard
Mail Station 105
Tallahassee, Florida 32399

D.E.P. USE ONLY	
Processed: <u>11-26-13</u>	<u>VLE</u>
B.L.M. - I.D. <u>400440</u>	
QUAD - I.D. <u>2417</u>	

EMBOSSSED SEAL OVER SIGNATURE