

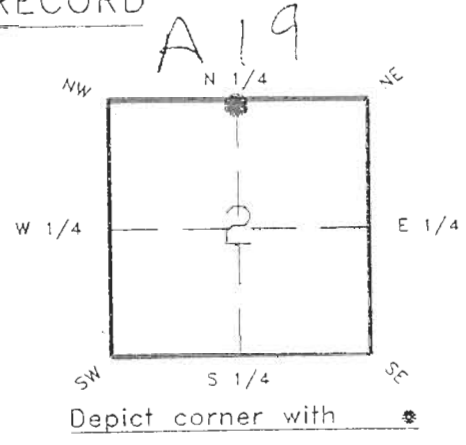
4021A19

DOC. # 0046982

FLORIDA DEPARTMENT OF NATURAL RESOURCES  
CERTIFIED CORNER RECORD

CORNER DESCRIPTION:

N. 1/4 corner of Section 2,  
Twp 40 S., Rge 21 E.,  
Tallahassee Base Meridian,  
CHARLOTTE County(s), Florida.  
SARASOTA



MONUMENTATION DESCRIPTION:

Describe original monument and accessories, or subsequent restoration. Give sources of information. (If no attempt was made to search for the original monument and accessories, this information is not necessary.)  
NONE FOUND

Description of corner evidence found:

P.K. NAIL & WASHER ON SURFACE ASPHALT  
SET CHARLOTTE COUNTY MONUMENT & WELL

State method(s) to determine corner location (lost corners only):

HORIZONTAL POSITION INFORMATION ( if determined ):

Latitude 27°01'58.06389" Longitude 82°10'49.96769"  
Y(Northing) 299050.534 m X(Easting) 182086.107" Zone FLA.  
Convergence -0°04'55.411" Scale factor 0.99994514

Coordinate determination (circle one): Field traverse GPS

Horizontal datum (circle one): NAD27 NAD83(1986) NAD83(1990) other (explain)

Order of accuracy as defined in "Standards and Specifications for Geodetic Control Networks" published by the Federal Geodetic Control Committee (circle one):  
1st, 2nd, 3rd, class 1

or Minimum Technical Standards (Chapter 21HH-6, F.A.C.) ratio of closure for field data (example 1:10,000), \_\_\_\_\_ . This does not specify an order of accuracy.

Control point(s) used for survey:

Comments:

0048982

DOC. #

SKETCH:



N. 1/4 COR. SEC. 2

40/21

N.E. CORNER SECTION 2 40/21

TOP CENTER FIRE HYDRANT



SET MONUMENT & WELL

P.K. NAIL & WASHER @ C/L X C/L

HILLSBOROUGH BLVD

S.89°55'40"E. P

P.K. NAIL IN 4" PINE TREE



EVA STREET

\*\*PLEASE COMPLETE IN BLACK INK OR TYPE\*\*

BASIS OF BEARING-PLAT DATA-REFER-PORT CHARLOTTE SUBD. SEC. 30 P.B. 5 PG. 23 All bearings and distances must be from the corner to the witness. Indicate whether corner was found, set, or replaced and show north arrow. REFER: F.B. 273-14

REFERENCE MEASUREMENTS ( at least three vicinity references must be given below even if they appear on the above sketch ):

Description	Bearing	Distance
TOP CENTER FIRE HYDRANT	N.84°30'47"W.	236.06'
P.K. NAIL IN 4" PINE TREE	S.36°51'00"E.	110.23'
P.K. NAIL & WASHER @ C/L X C/L EVA STREET	S.89°55'40"E.	576.63' (576.68 P)

SURVEYORS CERTIFICATE: I certify the monument and accessories indicated above were field located on April 6, 1993.

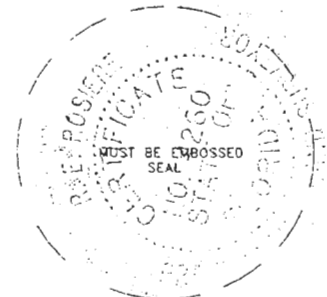
Signature: [Handwritten Signature] PLS 4260

DATE: 10-20-93

FIRM OR AGENCY: CHARLOTTE COUNTY SURVEY DEPT.

ADDRESS: 7000 FLORIDA STREET

CITY: PUNTA GORDA, FLA. STATE: 33950



549

Completeness checked by: B. Hinton  
Accepted and filed: 12-1-93  
B.L.M. - I.D. 02CL0035 Date  
G.N.R. USE ONLY

SEND TO: Department of Natural Resources, Bureau of Survey and Mapping, 3900 Commonwealth Boulevard, Mail Station 105, Tallahassee, Florida 32399. DNR 53-001(16) REV. 7/16/92 PAGE 2 OF 2