

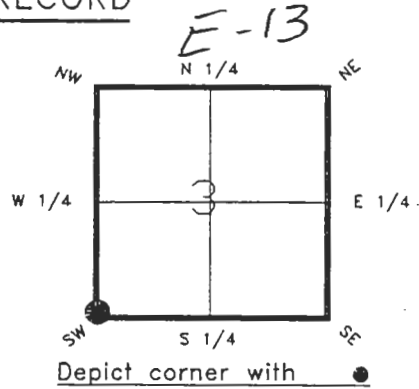
4021E13

DOC. # 0045131

FLORIDA DEPARTMENT OF NATURAL RESOURCES
CERTIFIED CORNER RECORD

CORNER DESCRIPTION:

S.W. corner of Section 3,
Twp 40 S., Rge 21 E.,
Tallahassee Base Meridian,
CHARLOTTE County(s), Florida.



MONUMENTATION DESCRIPTION:

Describe original monument and accessories, or subsequent restoration. Give sources of information. (If no attempt was made to search for the original monument and accessories, this information is not necessary.)
NONE FOUND

Description of corner evidence found:
1' IRON PIPE ON SURFACE PAVEMENT
SET CHARLOTTE COUNTY MONUMENT & WELL

State method(s) to determine corner location (lost corners only):

RECORDED
MAR 25 1995
SURVEY & MAPPING

HORIZONTAL POSITION INFORMATION (if determined):

Latitude 27°01'05.72523"N Longitude 82°12'19.05889"W
Y(Northing) 297443.456(M) X(Easting) 179628.017(M) Zone FL W
Convergence -0°05'35.737 Scale factor 0.99994630

Coordinate determination (circle one): Field traverse GPS
Horizontal datum (circle one): NAD27 NAD83(1986) NAD83(1990) other (explain)

Order of accuracy as defined in "Standards and Specifications for Geodetic Control Networks" published by the Federal Geodetic Control Committee (circle one):
1st 2nd, 3rd, class 1

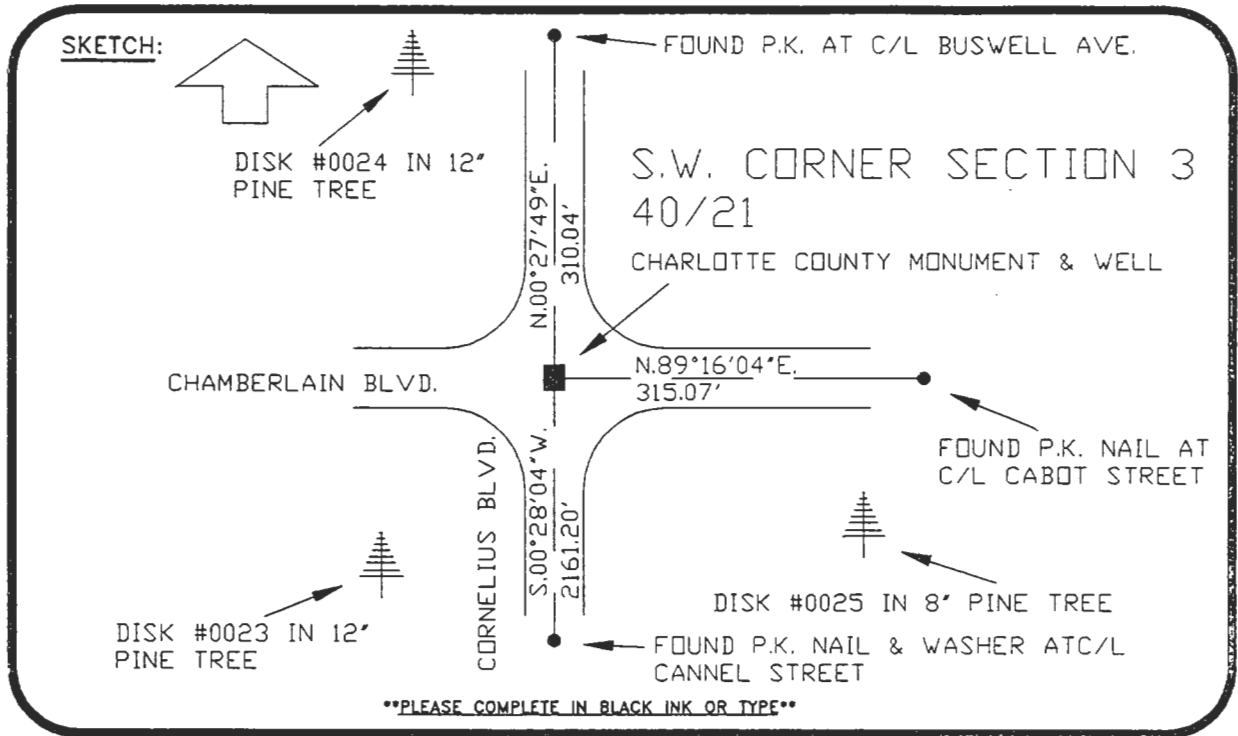
or Minimum Technical Standards (Chapter 21HH-6, F.A.C.) ratio of closure for field data (example 1:10,000), . This does not specify an order of accuracy.

Control point(s) used for survey:

Comments:

0045131

DOC. #



REFER: PORT CHARLOTTE SUBDIVISION, SECTION 32, PLATBOOK 5 PG. 29
 All bearings and distances must be from the corner to the witness. Indicate whether corner was found, set, or replaced and show north arrow.
 BASIS OF BEARING FROM SUBDIVISION PLAT REFER: F.B. 273-32
REFERENCE MEASUREMENTS (at least three vicinity references must be given below even if they appear on the above sketch):

Description	Bearing	Distance
DISK #0023 IN 12' PINE TREE	S.38°56'52"W.	95.20'
DISK #0024 IN 12' PINE TREE	N.26°36'56"W.	109.01'
DISK #0025 IN 12' PINE TREE	S.60°44'26"E.	120.01'

SURVEYORS CERTIFICATE: I certify the monument and accessories indicated above were field located on FEBRUARY 14, 19 92.

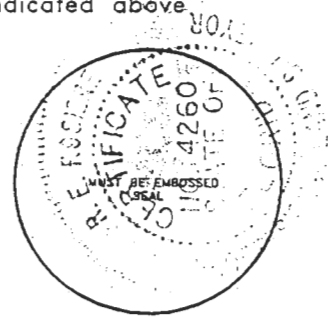
[Signature] PLS 4260
 SIGNATURE

3-23-92
 DATE

CHARLOTTE COUNTY SURVEY DEPT.
 FIRM OR AGENCY

7000 FLORIDA STREET
 ADDRESS

PUNTA GORDA, FLA. 33950
 CITY STATE



Completeness checked by: [Signature]
 Accepted and filed: 4-93 Date
 B.L.M. - I.D. 09040310 D.N.R. USE ONLY

SEND TO:
 Department of Natural Resources
 Bureau of Survey and Mapping
 3900 Commonwealth Boulevard
 Mail Station 105
 Tallahassee, Florida 32399

DNR 53-001(16)
 REV. 7/16/92
 PAGE 2 OF 2