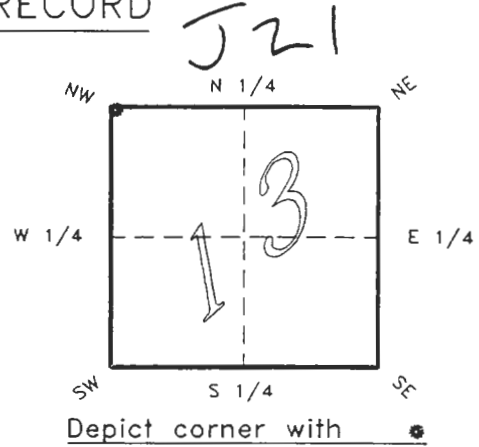


FLORIDA DEPARTMENT OF NATURAL RESOURCES
CERTIFIED CORNER RECORD

CORNER DESCRIPTION:

N.W. corner of Section 13 ,
Twp 40 S. , Rge 21 E. ,
Tallahassee Base Meridian,
CHARLOTTE County(s), Florida.



MONUMENTATION DESCRIPTION:

Describe original monument and accessories, or subsequent restoration. Give sources of information. (If no attempt was made to search for the original monument and accessories, this information is not necessary.)

Description of corner evidence found:

1 1/2" IRON PIPE, REPLACED WITH CONCRETE MONUMENT

State method(s) to determine corner location (lost corners only):

HORIZONTAL POSITION INFORMATION (if determined):

Latitude 27°00'12.47103" N Longitude 82°10'20.70183" W
Y(Northing) 295799.562 m X(Easting) 182888.268 m Zone FLW
Convergence -0°04'41.827" Scale factor 0.99994479

Coordinate determination (circle one): Field traverse GPS

Horizontal datum (circle one): NAD27 NAD83(1986) NAD83(1990) other (explain)

Order of accuracy as defined in "Standards and Specifications for Geodetic Control Networks" published by the Federal Geodetic Control Committee (circle one):
1st, 2nd, 3rd, class 1 ,

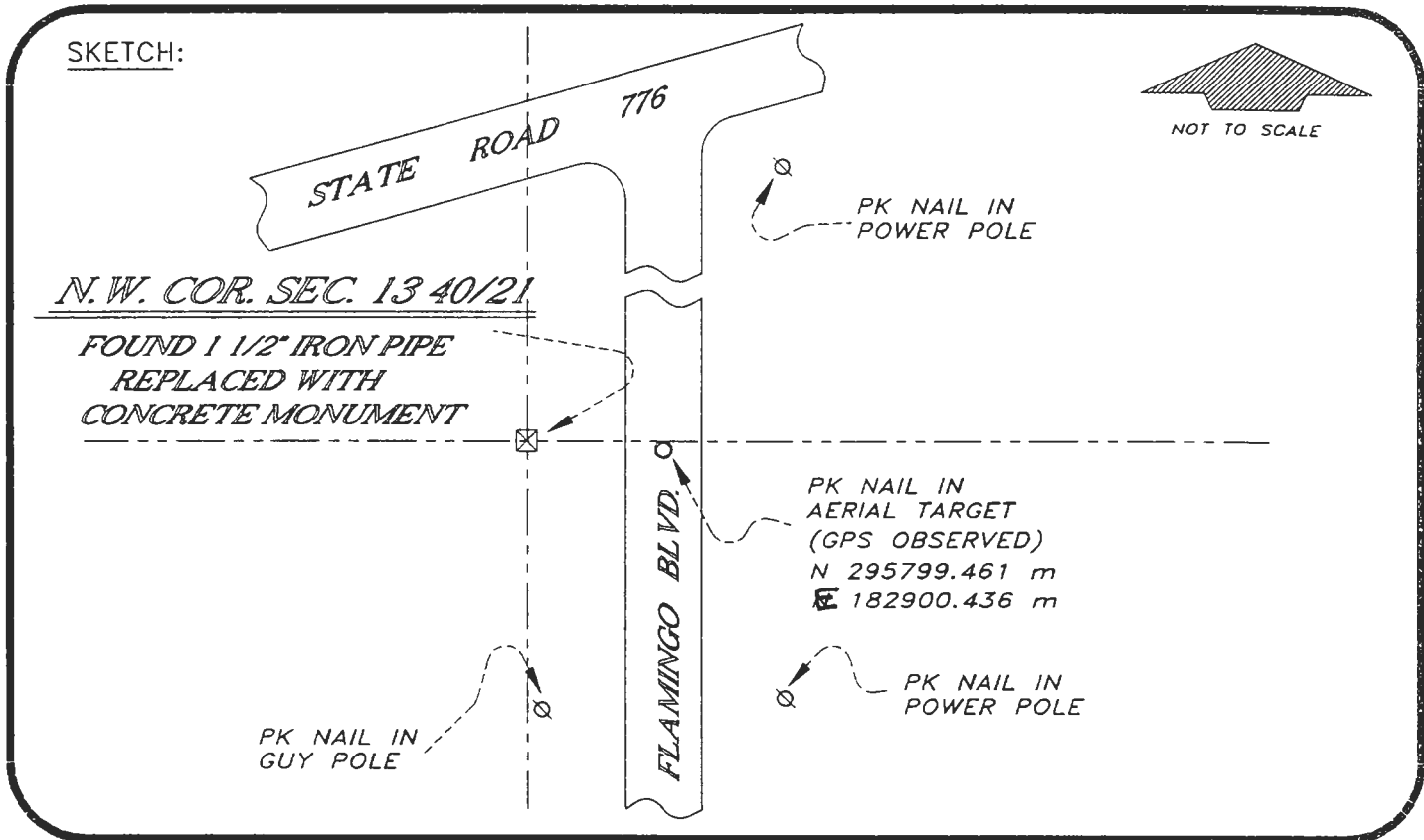
or Minimum Technical Standards (Chapter 21HH-6, F.A.C.) ratio of closure for field data (example 1:10,000), _____ . This does not specify an order of accuracy.

Control point(s) used for survey: *CHARLOTTE COUNTY HORIZONTAL CONTROL NETWORK INCLUDES HAVOLINE 2, PLACIDA 2, W260, PUNTAPORT, & FLGPS 58 AS B ORDER STATIONS.*

Comments:

MAR 4 1994

SURVEY MAPPING



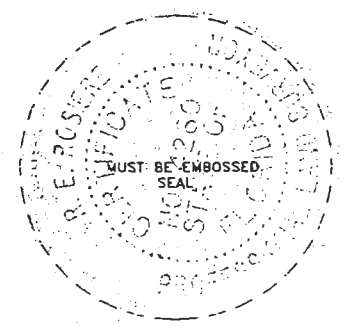
BASIS OF BEARING SOLAR OBSERVATION REFER FB 284/75
 All bearings and distances must be from the corner to the witness. Indicate whether corner was found, set, or replaced and show north arrow.

REFERENCE MEASUREMENTS (at least three vicinity references must be given below even if they appear on the above sketch):

Description	Bearing	Distance
PK NAIL IN POWER POLE	N 39°11'40" E	124.20'
PK NAIL IN POWER POLE	S 48°38'08" E	103.13'
PK NAIL IN GUY POLE	S 00°47'32" E	96.39'
PK NAIL IN AERIAL TARGET	S 89°36'08" E	39.92'
(S 89°31'26" E GRID)		

SURVEYORS CERTIFICATE: I certify the monument and accessories indicated above were field located on AUGUST 27, 19 93.

SIGNATURE: [Signature] PLS 4260
 DATE: 3-1-94
 FIRM OR AGENCY: CHARLOTTE COUNTY SURVEY DEPT.
 ADDRESS: 7000 FLORIDA STREET
 CITY: PUNTA GORDA, STATE: FLA. 33950



548

Completeness checked by: [Signature]
 Accepted and filed: 4-1-94 Date
 B.L.M. - I.D. 1411213 D.N.R. USE ONLY

SEND TO:
 Department of Natural Resources
 Bureau of Survey and Mapping
 3900 Commonwealth Boulevard
 Mail Station 105
 Tallahassee, Florida 32399
 DNR 53-001(16)
 REV. 7/16/92
 PAGE 2 OF 2