

4021NO1

DOC. #

050947

FLORIDA DEPARTMENT OF NATURAL RESOURCES  
CERTIFIED CORNER RECORD

CORNER DESCRIPTION:

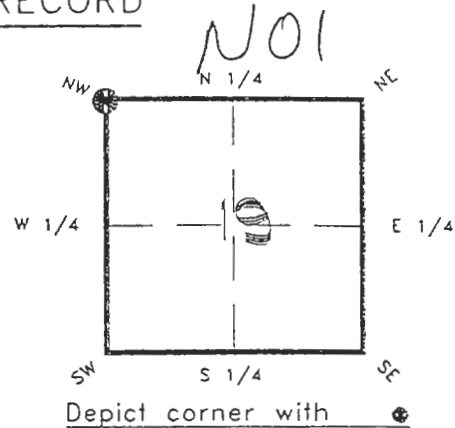
N.W. corner of Section 19

Twp 40 S., Rge 21 E.

Tallahassee Base Meridian,

CHARLOTTE County(s), Florida.

SARASOTA



MONUMENTATION DESCRIPTION:

Describe original monument and accessories, or subsequent restoration. Give sources of information. (If no attempt was made to search for the original monument and accessories, this information is not necessary.)

NONE FOUND

Description of corner evidence found:

CONCRETE MONUMENT WITH TOP BROKEN.

SET CHARLOTTE COUNTY SURVEY DEPARTMENT CONCRETE MONUMENT

State method(s) to determine corner location (lost corners only):

HORIZONTAL POSITION INFORMATION ( if determined ):

Latitude 26°59'21.44256" Longitude 82°15'19.25641"

Y(Northing) 294243.004 m X(Easting) 174654.403 m Zone FLW

Convergence -0°06'57.183" Scale factor 0.99994910

Coordinate determination (circle one): Field traverse GPS

Horizontal datum (circle one): NAD27 NAD83(1986) NAD83(1990) other (explain)

Order of accuracy as defined in "Standards and Specifications for Geodetic Control Networks" published by the Federal Geodetic Control Committee (circle one): 1st, 2nd, 3rd, class 1

or Minimum Technical Standards (Chapter 21HH-6, F.A.C.) ratio of closure for field data (example 1:10,000), . This does not specify an order of accuracy.

Control point(s) used for survey:

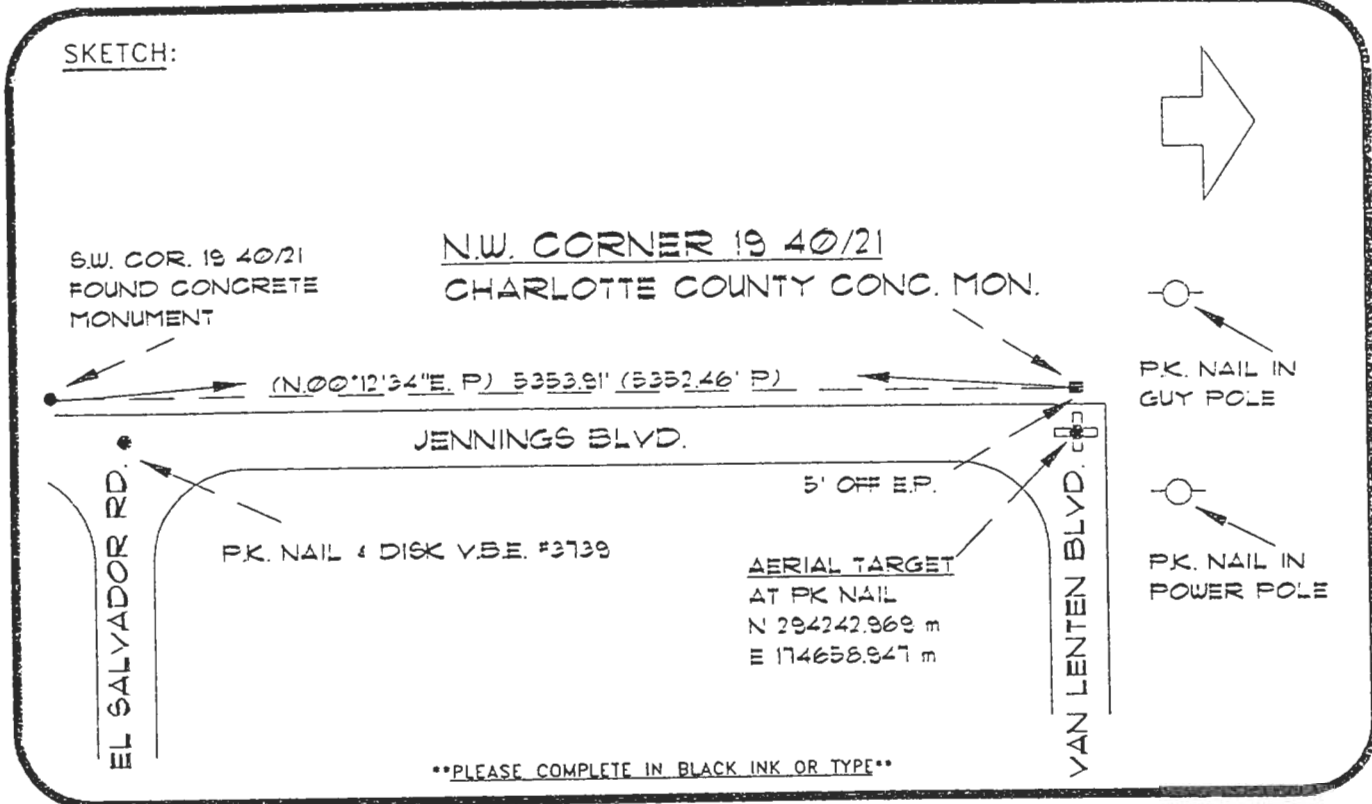
Comments:

RECEIVED

JAN 31 1995

SURVEY & MAPPING  
DNR 88-1001  
REV: 7/16/92  
PAGE 1 OF 2

SKETCH:



\*\*PLEASE COMPLETE IN BLACK INK OR TYPE\*\*

BASIS OF BEARING PLAT DATA, REFER: PORT CHARLOTTE SUBD. SEC. 60 P.B. 5 PG. 74  
All bearings and distances must be from the corner to the witness. Indicate whether corner was found, set, or replaced and show north arrow. REFER: F.B. 273-29

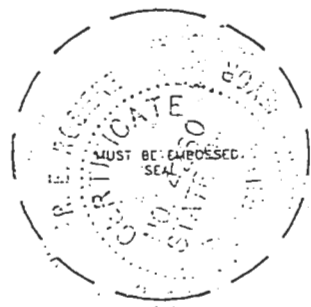
REFERENCE MEASUREMENTS ( at least three vicinity references must be given below even if they appear on the above sketch ):

Description	Bearing	Distance
P.K. NAIL IN GUY POLE	N.44°22'59"W.	44.26'
P.K. NAIL IN POWER POLE	N.47°21'32"E.	48.24'
P.K. NAIL & DISK V.B.E. 3739	S.03°00'11"E.	310.74'
SET SURVEY MARKER POST	W.'LY	2.4'
AERIAL TARGET	S.89°48'41"E.	14.91'

( SOLAR OBSERVATION S 89°40'38" E )

SURVEYORS CERTIFICATE: I certify the monument and accessories indicated above were field located on JANUARY 3, 19 95.

[Signature] PLS 4260  
 SIGNATURE  
1/30/95  
 DATE  
 CHARLOTTE COUNTY SURVEY DEPT.  
 FIRM OR AGENCY  
 7000 FLORIDA STREET  
 ADDRESS  
 PUNTA GORDA, FLA. 33950  
 CITY STATE



SEND TO:  
 Department of Natural Resources  
 Bureau of Survey and Mapping  
 3900 Commonwealth Boulevard  
 Mail Station 105  
 Tallahassee, Florida 32399

Completeness checked by: [Signature]  
 Accepted and filed: 3-1-95 Date  
 B.L.M. - I.D. 24131819 D.N.R. USE ONLY