

4021N13

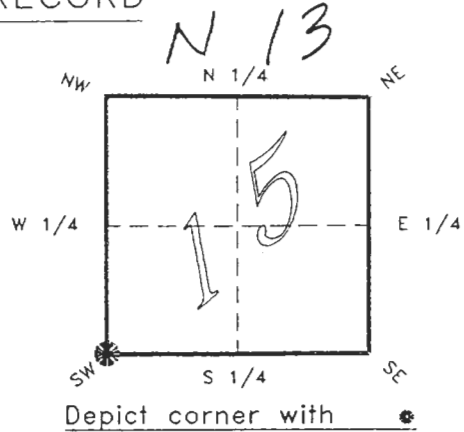
DOC. #

0046780

FLORIDA DEPARTMENT OF NATURAL RESOURCES
CERTIFIED CORNER RECORD

CORNER DESCRIPTION:

S.W. corner of Section 15 ,
Twp 40 S. , Rge 21 E. ,
Tallahassee Base Meridian,
CHARLOTTE County(s), Florida.



MONUMENTATION DESCRIPTION:

Describe original monument and accessories, or subsequent restoration. Give sources of information. (If no attempt was made to search for the original monument and accessories, this information is not necessary.)

Description of corner evidence found:
4"x4" CONCRETE MONUMENT LB 043 LS 4576

State method(s) to determine corner location (lost corners only):

HORIZONTAL POSITION INFORMATION (if determined):

Latitude 26°59'20.66007" Longitude 82°12'20.17782"
Y(Northing) 294209.907 m X(Easting) 179591.906 m Zone FL. W
Convergence -0°05'35.909" Scale factor 0.99994632

Coordinate determination (circle one): Field traverse GPS

Horizontal datum (circle one): NAD27 NAD83(1986) NAD83(1990) other (explain)

Order of accuracy as defined in "Standards and Specifications for Geodetic Control Networks" published by the Federal Geodetic Control Committee (circle one):
1st, 2nd, 3rd, class 1 ,

or Minimum Technical Standards (Chapter 21HH-6, F.A.C.) ratio of closure for field data (example 1:10,000), _____ . This does not specify an order of accuracy.

Control point(s) used for survey: CHARLOTTE COUNTY HORIZONTAL CONTROL NETWORK INCLUDES HAVOLINE 2, PLACIDA 2, W260, PUNTAPORT, & FLGPS 58 AS B ORDER STATIONS.

Comments:

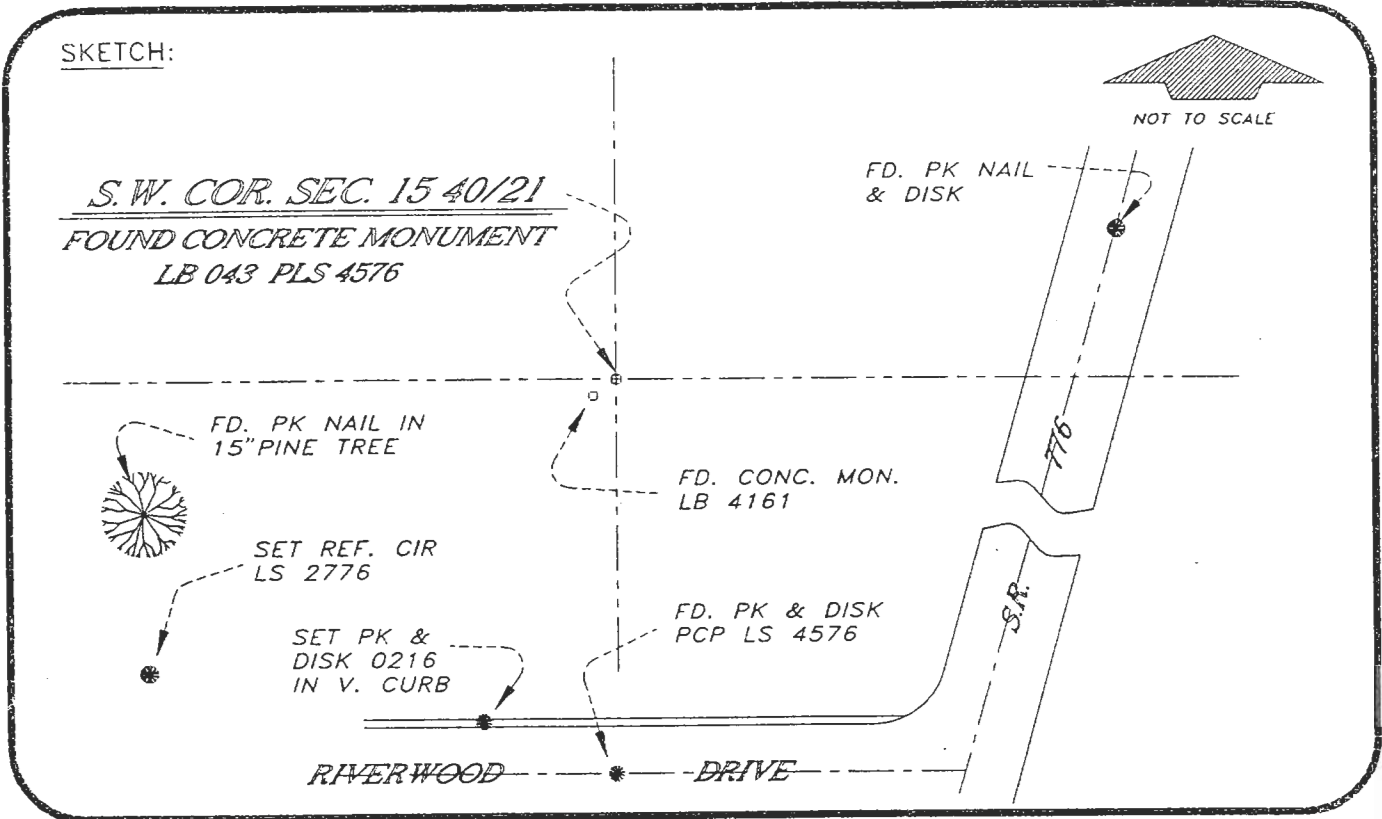
RECEIVED
OCT 01 1993
SURVEY & MAPPING

4021N13

DOC. #

0046780

SKETCH:



BEARINGS BASED ON SOLAR OBSERVATION

REFER FB 273/52

All bearings and distances must be from the corner to the witness. Indicate whether corner was found, set, or replaced and show north arrow.

SET SURVEY MARKER POST 3.0' W'LY

REFERENCE MEASUREMENTS (at least three vicinity references must be given below even if they appear on the above sketch):

Description	Bearing	Distance
PCP PK & DISK LS 4576	S 01°43'49" W	434.66'
PK NAIL IN 15" PINE TREE	S 78°51'54" W	154.90'
SET REF. CIR LS 2776	S 36°40'24" W	173.93'
SET DISK 0216 IN V. CURB	S 15°36'49" W	393.34'
FD. CONC. MON. LB 4161	S 45°22'49" W	1.20'

SURVEYORS CERTIFICATE: I certify the monument and accessories indicated above were field located on JULY 10, 19 93.

[Signature] PLS 4260
 SIGNATURE

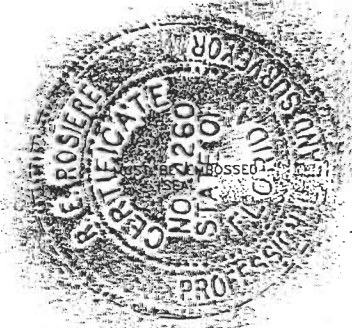
9-27-93
 DATE

CHARLOTTE COUNTY SURVEY DEPT.
 FIRM OR AGENCY

7000 FLORIDA STREET
 ADDRESS

PUNTA GORDA, FLA. 33950
 CITY STATE

510



SEND TO:

Department of Natural Resources
 Bureau of Survey and Mapping
 3900 Commonwealth Boulevard
 Mail Station 105
 Tallahassee, Florida 32399

DNR 53-001(16)
 REV. 7/16/92
 PAGE 2 OF 2

Completeness checked by: [Signature]
 Accepted and filed: 11-1-93 Date
 B.L.M. - I.D. 21161522 D.N.R. USE ONLY