

4021R01

DOC. #

050948

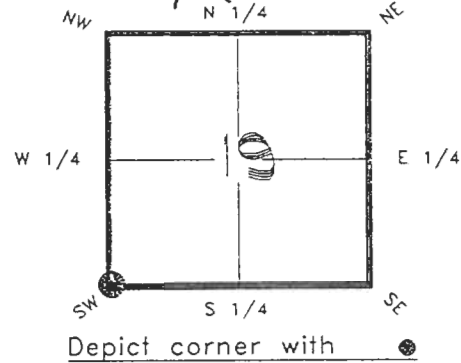
FLORIDA DEPARTMENT OF NATURAL RESOURCES  
CERTIFIED CORNER RECORD

R01

CORNER DESCRIPTION:

S.W. corner of Section 19 ,  
Twp 40 S. , Rge 21 E. ,  
Tallahassee Base Meridian,

CHARLOTTE County(s), Florida.  
SARASOTA



MONUMENTATION DESCRIPTION:

Describe original monument and accessories, or subsequent restoration. Give sources of information. (If no attempt was made to search for the original monument and accessories, this information is not necessary.)  
NONE FOUND

Description of corner evidence found:  
CONCRETE MONUMENT

State method(s) to determine corner location (lost corners only):

HORIZONTAL POSITION INFORMATION ( if determined ):

Latitude 26°58'28.42213" Longitude 82°15'19.51743"  
Y(Northing) 292611.206 m X(Easting) 174643.906 m Zone FLW  
Convergence -0°06'57.091" Scale factor 0.99994911

Coordinate determination (circle one): Field traverse   GPS

Horizontal datum (circle one): NAD27 NAD83(1986)  NAD83(1990) other (explain)

Order of accuracy as defined in "Standards and Specifications for Geodetic Control Networks" published by the Federal Geodetic Control Committee (circle one):  
1st,  2nd, 3rd, class 1 ,

or Minimum Technical Standards (Chapter 21HH-6, F.A.C.) ratio of closure for field data (example 1:10,000), \_\_\_\_\_ . This does not specify an order of accuracy.

Control point(s) used for survey:

Comments:

RECEIVED

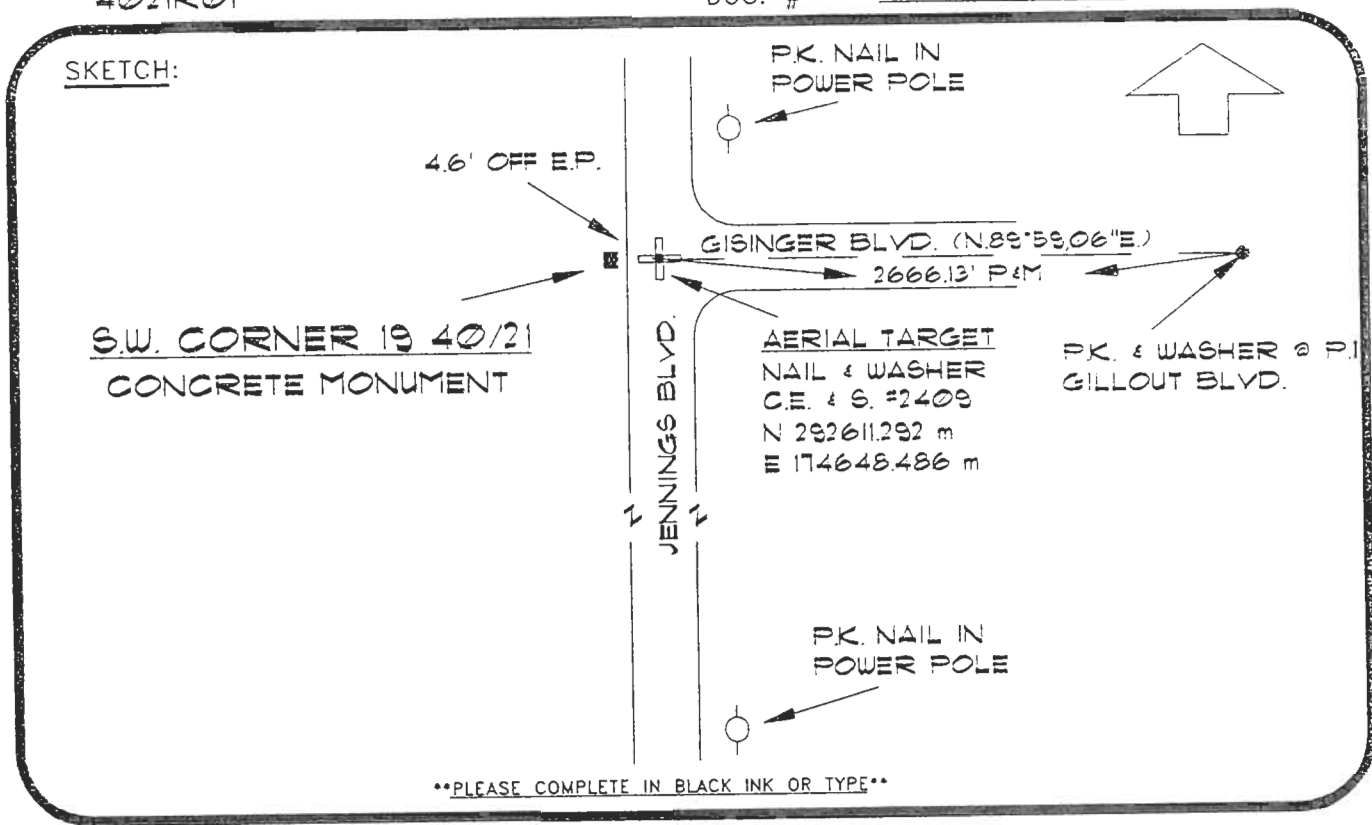
JAN 31 1995

SURVEY & MAPPING

050948

4021R01

DOC. #



BASIS OF BEARING PLAT DATA-REFER-PORT CHARLOTTE SUBD., SEC. 60 P.B. 5 PG. 74  
 All bearings and distances must be from the corner to the witness. Indicate whether corner was found, set, or replaced and show north arrow. REFER: F.S. 273-23

SET SURVEY MARKER POST 1.8' W.L.Y

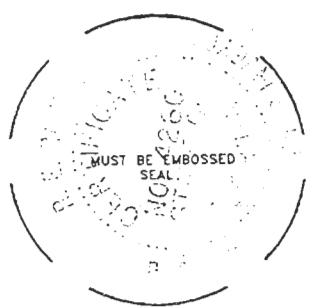
REFERENCE MEASUREMENTS ( at least three vicinity references must be given below even if they appear on the above sketch ):

Description	Bearing	Distance
PK. NAIL IN POWER POLE	N.42°19'48"E	52.03'
PK. NAIL IN POWER POLE	S.04°06'14"E	454.25'
AERIAL TARGET	N.88°40'34"E	15.03'
( SOLAR OBSERVATION N.88°48'52"E. )		

SURVEYORS CERTIFICATE: I certify the monument and accessories indicated above were field located on JANUARY 3, 19 95.

[Signature] PLS 4260  
 SIGNATURE  
1/30/95  
 DATE  
 CHARLOTTE COUNTY SURVEY DEPT.  
 FIRM OR AGENCY  
 7000 FLORIDA STREET  
 ADDRESS  
 PUNTA GORDA, FLA. 33950  
 CITY STATE

511



Completeness checked by: B. Linton  
 Accepted and filed: 3-19-95  
 Date  
 B.L.M. - I.D. 25241930 D.N.R. USE ONLY

SEND TO:  
 Department of Natural Resources  
 Bureau of Survey and Mapping  
 3900 Commonwealth Boulevard  
 Mail Station 105  
 Tallahassee, Florida 32399

DNR 53-001(16)  
 REV. 7/16/92  
 PAGE 2 OF 2