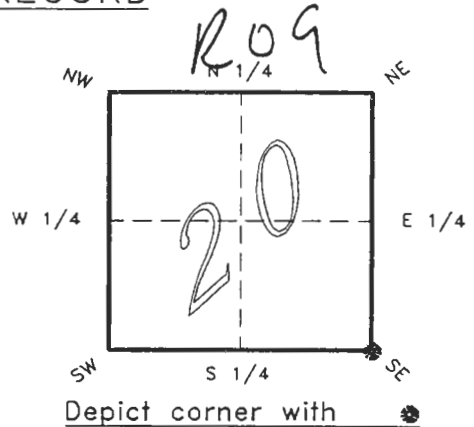


4021R09

FLORIDA DEPARTMENT OF ENVIRONMENTAL PROTECTION
CERTIFIED CORNER RECORD

CORNER DESCRIPTION:

S.E. corner of Section 20 ,
Twp 40 S. , Rge 21 E. ,
Tallahassee Base Meridian,
CHARLOTTE County(s), Florida.



MONUMENTATION DESCRIPTION:

Describe original monument and accessories, or subsequent restoration. Give sources of information. (If no attempt was made to search for the original monument and accessories, this information is not necessary.)

Description of corner evidence found:

2 1/2" IRON PIPE, REPLACED WITH CONCRETE MONUMENT.

State method(s) to determine corner location (lost corners only):

HORIZONTAL POSITION INFORMATION (if determined):

Latitude 26°58'28.23659" N Longitude 82°13'19.60152" W
Y(Northing) 292599.245 m X(Easting) 177950.640 m Zone FLW
Convergence -0°06'02.696" Scale factor 0.99994718

Coordinate determination (circle one): Field traverse GPS

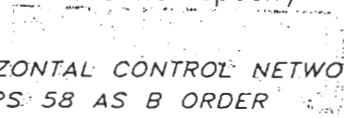
Horizontal datum (circle one): NAD27 NAD83(1986) NAD83(1990) other (explain)

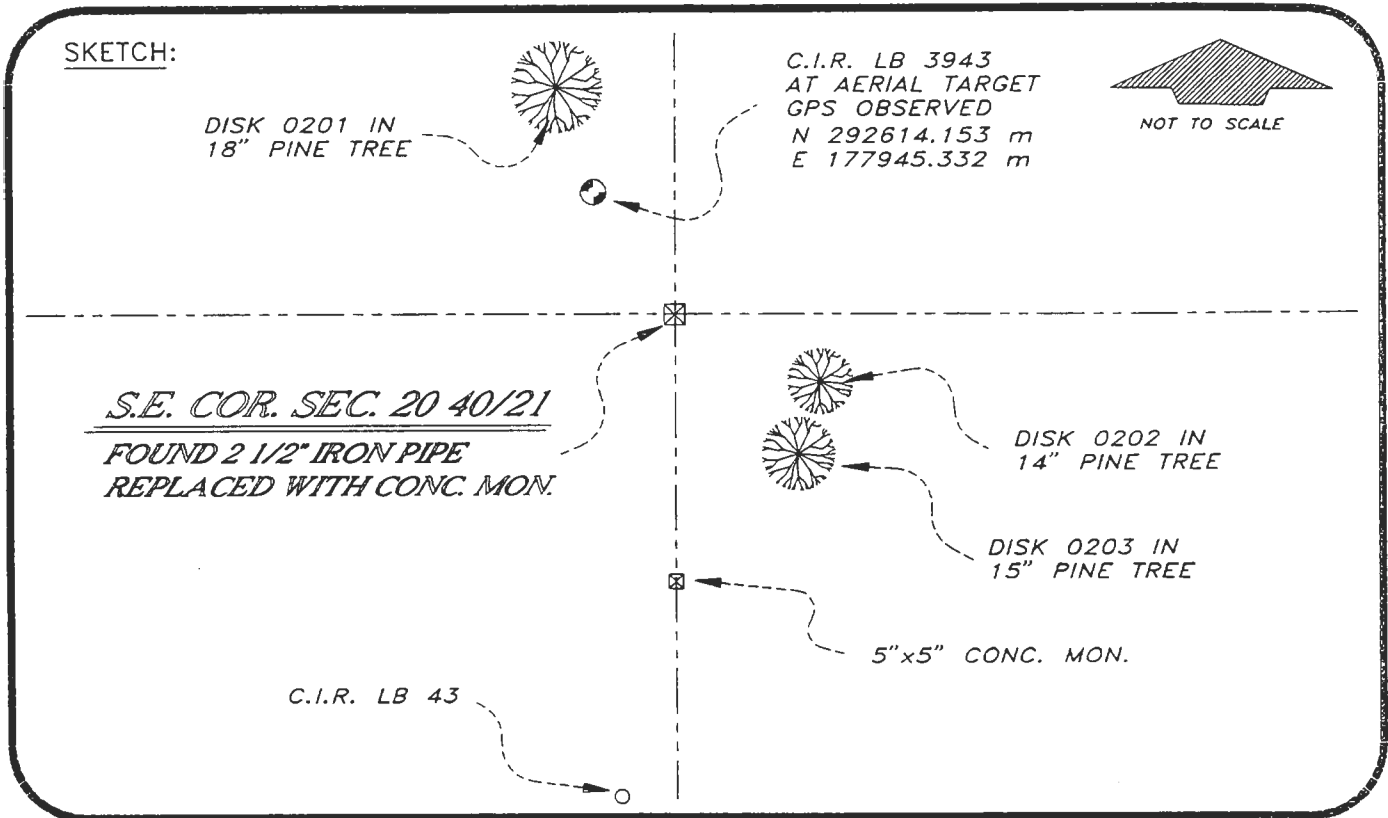
Order of accuracy as defined in "Standards and Specifications for Geodetic Control Networks" published by the Federal Geodetic Control Committee (circle one):
1st, 2nd, 3rd, class 1 ,

or Minimum Technical Standards (Chapter 21HH-6, F.A.C.) ratio of closure for field data (example 1:10,000), _____ . This does not specify an order of accuracy.

Control point(s) used for survey: *CHARLOTTE COUNTY HORIZONTAL CONTROL NETWORK INCLUDES HAVOLINE 2, PLACIDA 2, W260, PUNTPORT, & FLGPS 58 AS B ORDER STATIONS.*

Comments:


MAR 4 1994



BASIS OF BEARING SOLAR OBSERVATION REFER: FB 273/45

REFERENCE MEASUREMENTS

| Description | Bearing | Distance |
|-----------------------------|----------------------|----------|
| C.I.R. LB 43 | S 07°16'05" W | 299.00' |
| DISK 0201 IN 18" PINE TREE | N 19°32'08" W | 103.91' |
| DISK 0202 IN 14" PINE TREE | S 71°10'30" E | 59.47' |
| DISK 0203 IN 15" PINE TREE | S 30°37'35" E | 68.27' |
| C.I.R. LB 3943 GPS OBSERVED | N 19°42'00" W | 51.92' |
| | (N 19°35'57" W GRID) | |

SURVEYORS CERTIFICATE: I certify the monument and accessories indicated above were field located on DECEMBER 15, 19 93.

R. Rose
SIGNATURE PLS 4260

3-1-94
DATE

CHARLOTTE COUNTY SURVEY DEPT.
FIRM OR AGENCY

7000 FLORIDA STREET
ADDRESS

PUNTA GORDA, FLA. 33950
CITY STATE



510

Completeness checked by: B. Linton

Accepted and filed: 4-1-94 Date

B.L.M. - I.D. 29202128 D.N.R. USE ONLY

SEND TO:
Department of Environmental Protection
Bureau of Survey and Mapping
3900 Commonwealth Boulevard
Mail Station 105
Tallahassee, Florida 32399