

DOC. #

050951

4021V01

FLORIDA DEPARTMENT OF ENVIRONMENTAL PROTECTION
CERTIFIED CORNER RECORD

CORNER DESCRIPTION:

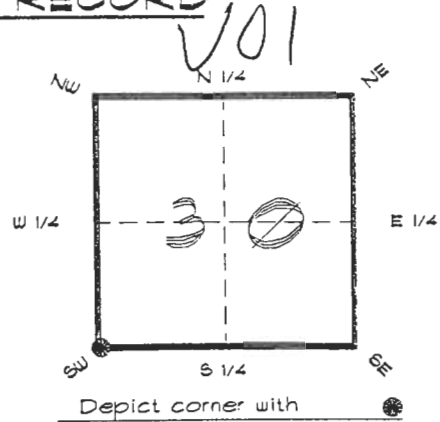
S.W. corner of Section 30,

Twp 40 S., Rge 21 E.,

Tallahassee Base Meridian,

CHARLOTTE County(s), Florida.

SARASOTA



MONUMENTATION DESCRIPTION:

Describe original monument and accessories, or subsequent restoration. Give sources of information. (If no attempt was made to search for the original monument and accessories, this information is not necessary.)

Description of corner evidence found:

CONCRETE MONUMENT

State method(s) to determine corner location (lost corners only):

HORIZONTAL POSITION INFORMATION (if determined):

Latitude 26°57'35.53462" N Longitude 82°15'19.77402" W

Y(Northing) 290983.502 m X(Easting) 174633.539 m Zone FLW

Convergence -0°06'56.997" scale factor 0.99994912

Coordinate determination (circle one): Field traverse (GPS)

Horizontal datum (circle one): NAD27 NAD83(1986) (NAD83(1990)) other (explain)

Order of accuracy as defined in Standards and Specifications for Geodetic Control Networks published by the Federal Geodetic Control Committee (circle one):

1st, (2nd), 3rd, class 1

or Minimum Technical Standards (Chapter 6IG17, F.A.C.) ratio of closure for field data (example 1:10,000), . This does not specify an order of accuracy.

Control point(s) used for survey: CHARLOTTE COUNTY HORIZONTAL CONTROL NETWORK INCLUDES HAYOLINE 2, FLAGIDA 2, W260, PUNTPORT, & FLGPS 58 45 B ORDER STATIONS.

Comments:

RECEIVED

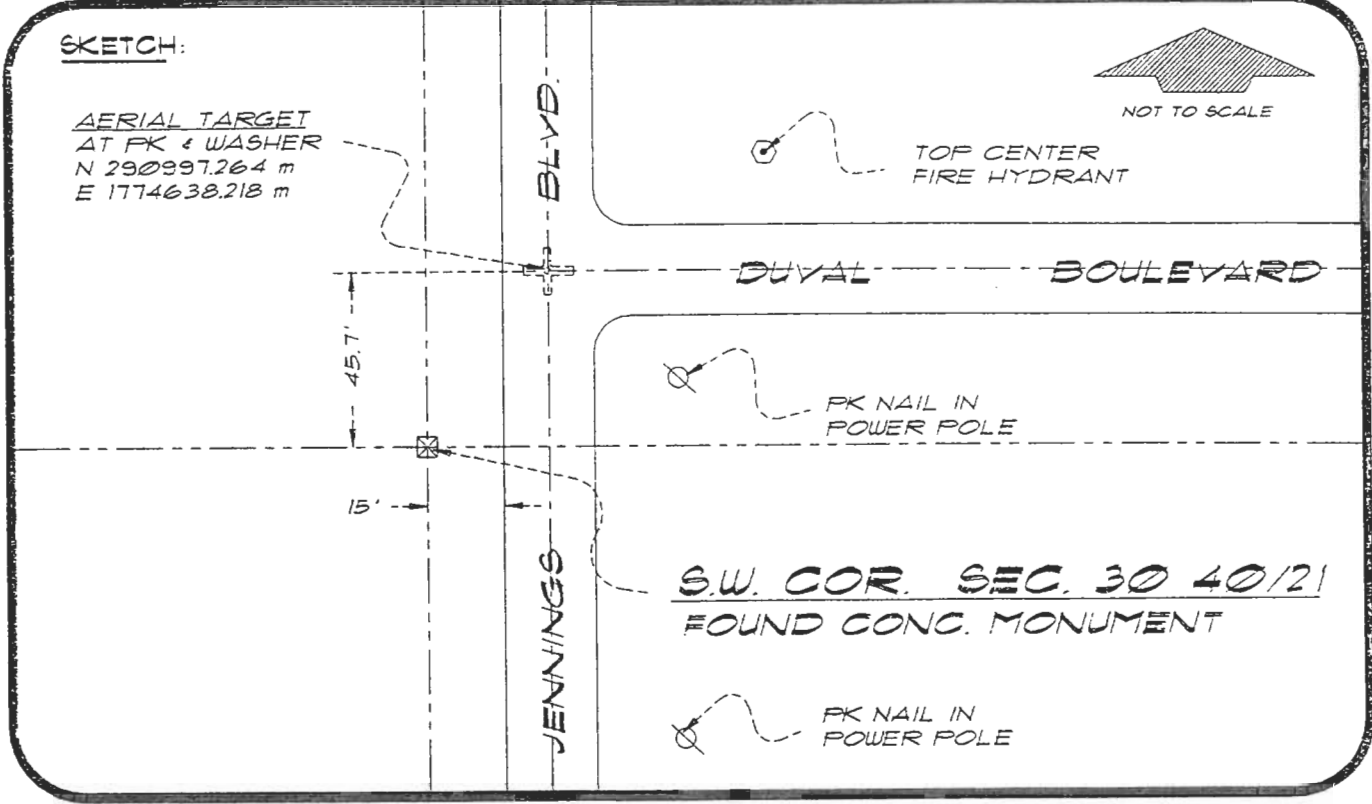
JAN 31 1995

SURVEY & MAPPING

4021V01

DOC. #

050951



BASIS OF BEARING FROM SOLAR OBSERVATION
REFER: FB 273/21

REFERENCE MEASUREMENTS

Description	Bearing	Distance
TOP FIRE HYDRANT	N 48°41'18" E	99.82'
PK NAIL IN P. POLE	S 22°34'29" E	89.58'
PK NAIL IN P. POLE	N 68°59'04" E	40.82'
AERIAL TARGET	N 18°39'41" E	47.69'

SURVEYORS CERTIFICATE: I certify the monument and accessories indicated above were field located on JANUARY 3, 1995

R. P. Rose

PLS 4260

SIGNATURE

1/30/95

DATE

CHARLOTTE COUNTY SURVEY DEPT.

FIRM OR AGENCY

1000 FLORIDA STREET

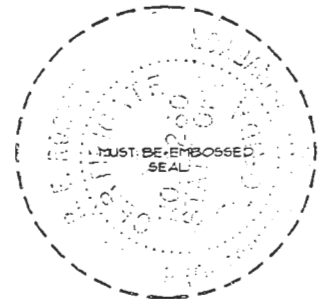
ADDRESS

PUNTA GORDA, FLORIDA 33950

CITY

STATE

511



Completeness checked by: *B. Senter*

Accepted and filed: *3-1-95* Date

BLM - ID. *36253031* DNLR USE ONLY

SEND TO:

Department of Environmental Protection
Bureau of Survey and Mapping
3900 Commonwealth Boulevard
Mail Station 105
Tallahassee, Florida 32399