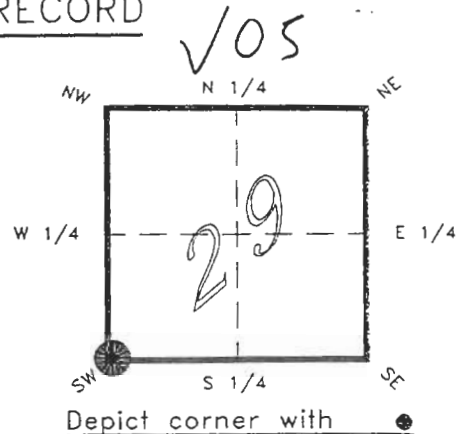


FLORIDA DEPARTMENT OF NATURAL RESOURCES
CERTIFIED CORNER RECORD

CORNER DESCRIPTION:

S.W. corner of Section 29 ,
Twp 40 S. , Rge 21 E. ,
Tallahassee Base Meridian,
CHARLOTTE County(s), Florida.



MONUMENTATION DESCRIPTION:

Describe original monument and accessories, or subsequent restoration. Give sources of information. (If no attempt was made to search for the original monument and accessories, this information is not necessary.)

Description of corner evidence found:

FOUND 2" IRON PIPE DISTURBED AND SEMI-HORIZONTAL FROM WHICH ORIGINAL LOCATION COULD NOT BE DETERMINED. SET BRASS DISK IN MONUMENT WELL ON POSITION DETERMINED BY PROPORTION FROM GENERAL DEVELOPEMENT TOWNSHIP PLAT.

HORIZONTAL POSITION INFORMATION (if determined):

Latitude 26°57'35.44197" Longitude 82°14'21.4520"
Y(Northing) 290977.0502 m X(Easting) 176241.998 m Zone FLW
Convergence -0°06'30.555" Scale factor 0.99994814

Coordinate determination (circle one): Field traverse GPS
Horizontal datum (circle one): NAD27 NAD83(1986) NAD83(1990) other (explain)

Order of accuracy as defined in "Standards and Specifications for Geodetic Control Networks" published by the Federal Geodetic Control Committee (circle one):
1st, 2nd, 3rd, class 1

or Minimum Technical Standards (Chapter 21HH-6, F.A.C.) ratio of closure for field data (example 1:10,000), . This does not specify an order of accuracy.

Control point(s) used for survey:

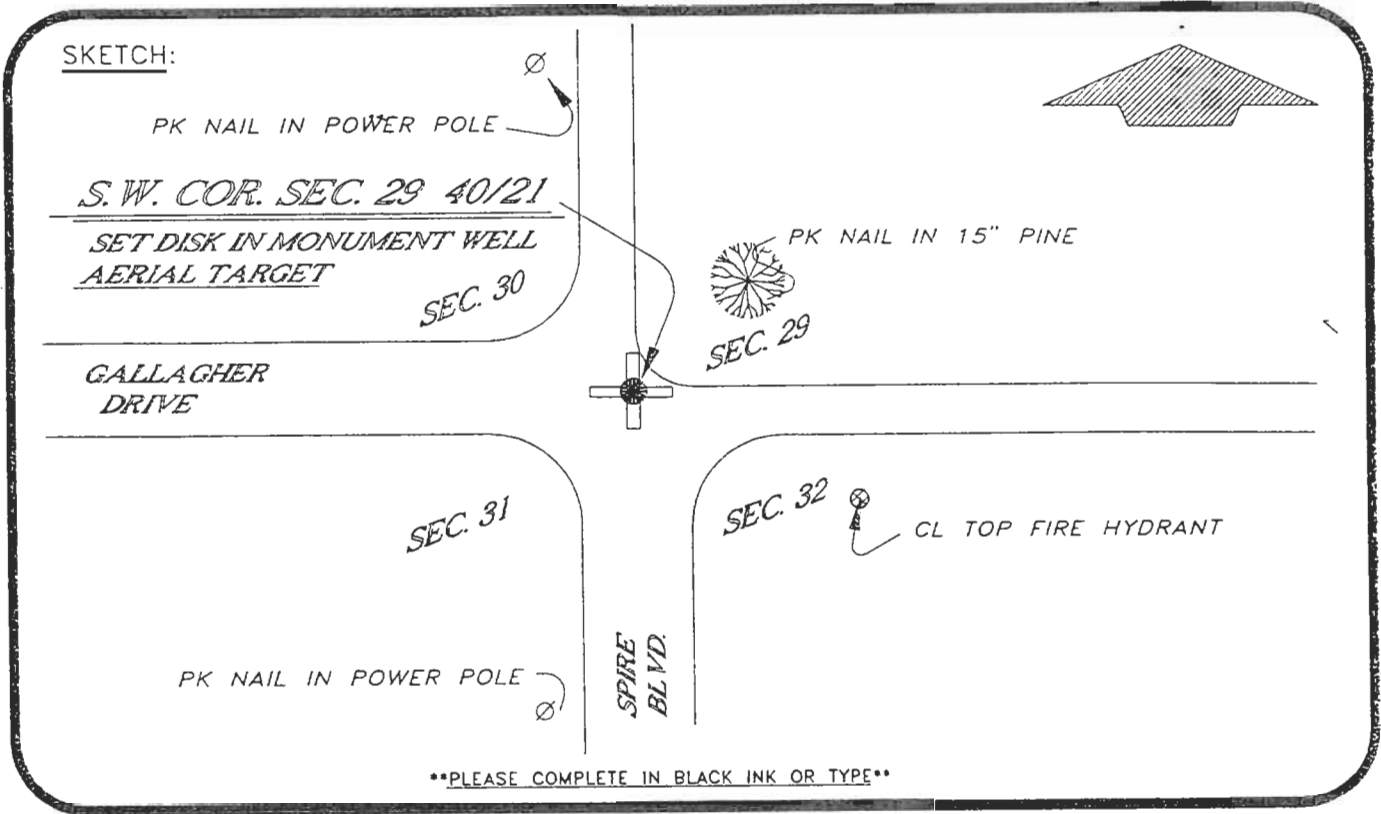
Comments:



JAN 31 1995

050949

DOC. #



All bearings and distances must be from the corner to the witness. Indicate whether corner was found, set, or replaced and show north arrow.

REFERENCE MEASUREMENTS (at least three vicinity references must be given below even if they appear on the above sketch):

Description	Bearing	Distance
PK NAIL IN POWER POLE	S 00°27'52" W	159.67'
PK NAIL IN 15" PINE TREE	N 46°52'22" E	25.02'
CL TOP FIRE HYDRANT	S 64°48'28" E	53.39'
PK NAIL IN POWER POLE	N 07°51'21" W	161.71'

SURVEYORS CERTIFICATE: I certify the monument and accessories indicated above were field located on JULY 28, 19 93.

UPDATE JAN. 3, 1995

[Signature] PLS 4260

SIGNATURE

1/30/95

DATE

CHARLOTTE COUNTY SURVEY DEPT.

FIRM OR AGENCY

7000 FLORIDA STREET

ADDRESS

PUNTA GORDA, FLA. 33950

CITY

STATE

510



Completeness checked by: [Signature]

Accepted and filed: 3-1-95 Date

B.L.M. - I.D. 31302932 D.N.R. USE ONLY

SEND TO:

Department of Natural Resources
Bureau of Survey and Mapping
3900 Commonwealth Boulevard
Mail Station 105
Tallahassee, Florida 32399

DNR 53-001(16)
REV. 7/16/92
PAGE 2 OF 2