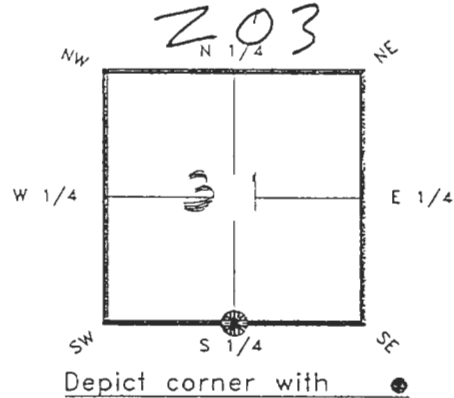


4021Z03

FLORIDA DEPARTMENT OF NATURAL RESOURCES  
CERTIFIED CORNER RECORD

CORNER DESCRIPTION:

S. 1/4 corner of Section 31  
Twp 40 S., Rge 21 E.  
Tallahassee Base Meridian,  
CHARLOTTE County(s), Florida.



MONUMENTATION DESCRIPTION:

Describe original monument and accessories, or subsequent restoration. Give sources of information. (If no attempt was made to search for the original monument and accessories, this information is not necessary.)

NONE FOUND

Description of corner evidence found:

3/4" IRON PIPE (BENT) 0.1' BELOW PAVEMENT

SET CHARLOTTE COUNTY MONUMENT & WELL

State method(s) to determine corner location (lost corners only):

HORIZONTAL POSITION INFORMATION ( if determined ):

Latitude 26°56'42.85932"N Longitude 82°14'50.69629"W  
Y(Northing) 289360.724 m X(Easting) 175432.304 m Zone FLW  
Convergence -0°06'43.611" Scale factor 0.99994862

Coordinate determination (circle one): Field traverse GPS

Horizontal datum (circle one): NAD27 NAD83(1986) NAD83(1990) other (explain)

Order of accuracy as defined in "Standards and Specifications for Geodetic Control Networks" published by the Federal Geodetic Control Committee (circle one):  
1st, 2nd, 3rd, class 1

or Minimum Technical Standards (Chapter 21HH-6, F.A.C.) ratio of closure for field data (example 1:10,000), . This does not specify an order of accuracy.

Control point(s) used for survey:

Comments:

RECEIVED

JAN 31 1995

SURVEY & MAPPING

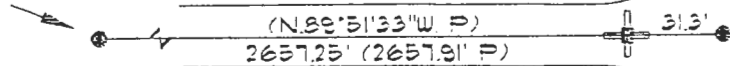
4021Z03

DOC. #

050954

SKETCH:

S.W. COR. SEC. 31 40/21  
FD. P.K. & WASHER



PK. NAIL IN POWER POLE

S. 1/2 CORNER SECTION 31 40/21

SET MONUMENT & WELL  
AERIAL TARGET

FORESMAN BLVD.

DAVID BLVD.

"X" IN CONCRETE BRIDGE  
RAIL

WATERWAY

WATERWAY

\*\*PLEASE COMPLETE IN BLACK INK OR TYPE\*\*

REFER: PORT CHARLOTTE SUBDIVISION, SECTION 56, PLAT BOOK 5 PAGE 10

All bearings and distances must be from the corner to the witness. Indicate whether corner was found, set, or replaced and show north arrow.

BASIS OF BEARING - FROM SUBDIVISION PLAT REFER: F.S. 273-20

REFERENCE MEASUREMENTS (at least three vicinity references must be given below even if they appear on the above sketch):

Description	Bearing	Distance
"X" IN CONCRETE BRIDGE RAIL	S20°33'58"E.	166.27'
"X" IN CONCRETE BRIDGE RAIL	S08°31'18"E.	159.45'
PK. NAIL IN POWER POLE	S76°51'10"W.	114.54'

SURVEYORS CERTIFICATE: I certify the monument and accessories indicated above were field located on NOVEMBER 13, 19 93

updated 1/18/95

[Signature] PLS 4260

SIGNATURE

1/30/95

DATE

CHARLOTTE COUNTY SURVEY DEPT.

FIRM OR AGENCY

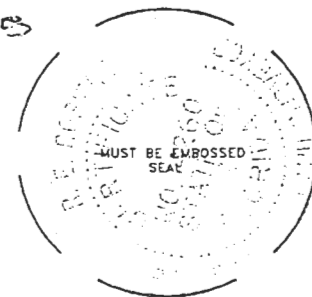
7000 FLORIDA STREET

ADDRESS

PUNTA GORDA, FLA. 33950

CITY

STATE



510

Completeness checked by: [Signature]  
 Accepted and filed: 3-1-95  
 B.L.M. - I.D. 06CLO031 Date 3-1-95  
 D.N.R. USE ONLY

SEND TO:

Department of Natural Resources  
Bureau of Survey and Mapping  
3900 Commonwealth Boulevard  
Mail Station 105  
Tallahassee, Florida 32399

DNR 53-001(16)  
REV. 7/16/92  
PAGE 2 OF 2