

DOC. #

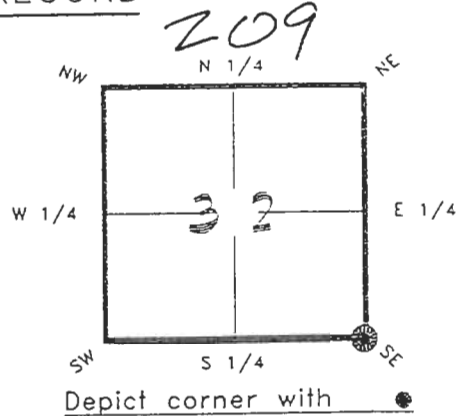
050956

402109

FLORIDA DEPARTMENT OF NATURAL RESOURCES  
CERTIFIED CORNER RECORD

CORNER DESCRIPTION:

SE corner of Section 32 ,  
Twp 40 S. , Rge 21 E. ,  
Tallahassee Base Meridian,  
CHARLOTTE County(s), Florida.



MONUMENTATION DESCRIPTION:

Describe original monument and accessories, or subsequent restoration. Give sources of information. (If no attempt was made to search for the original monument and accessories, this information is not necessary.)  
**NONE FOUND**

Description of corner evidence found:

**FOUND P.K. NAIL 0.1" BELOW PAVEMENT  
SET CHARLOTTE COUNTY MONUMENT & WELL**

State method(s) to determine corner location (lost corners only):

HORIZONTAL POSITION INFORMATION ( if determined ):

Latitude 26°56'42.61447"N. Longitude 82°13'22.41543"W.  
Y(Northing) 289348.659(M) X(Easting) 177867.311(M) Zone FL W  
Convergence -0°06'03.606" Scale factor 0.99994722

Coordinate determination (circle one): Field traverse   GPS

Horizontal datum (circle one): NAD27 NAD83(1986)  NAD83(1990) other (explain)

Order of accuracy as defined in "Standards and Specifications for Geodetic Control Networks" published by the Federal Geodetic Control Committee (circle one):  
1st,  2nd, 3rd, class 1 ,

or Minimum Technical Standards (Chapter 21HH-6, F.A.C.) ratio of closure for field data (example 1:10,000), \_\_\_\_\_ . This does not specify an order of accuracy.

Control point(s) used for survey:

Comments:

RECEIVED

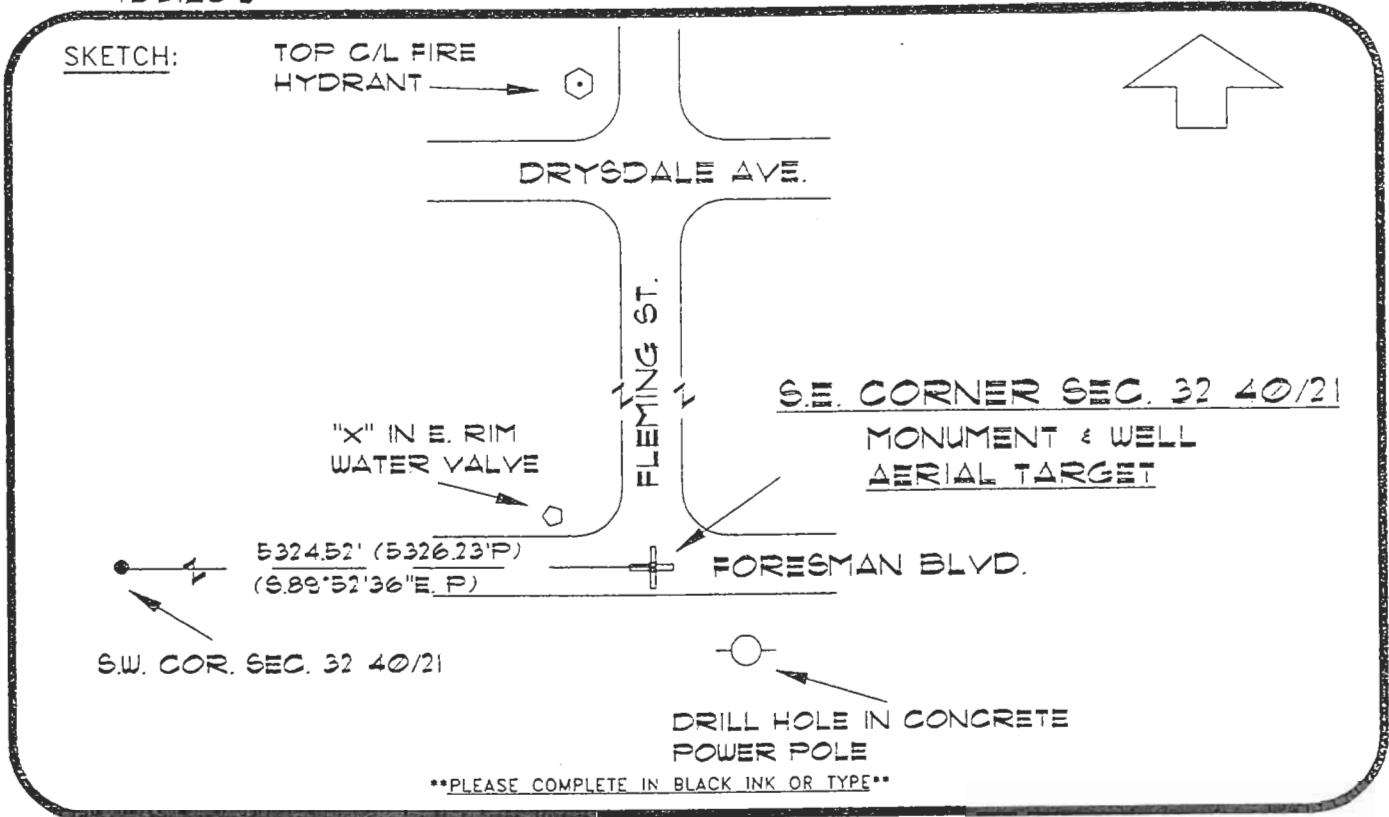
JAN 31 1995

SURVEY & MAPPING

050956

4021Z09

DOC. #



\*\*PLEASE COMPLETE IN BLACK INK OR TYPE\*\*

BASIS OF BEARING PLAT DATA REFER: PORT CHARLOTTE SUBD. 32 P.B. 5 PG. 66  
All bearings and distances must be from the corner to the witness. Indicate whether corner was found, set, or replaced and show north arrow. REFER: F.B. 273-25

REFERENCE MEASUREMENTS ( at least three vicinity references must be given below even if they appear on the above sketch ):

Description	Bearing	Distance
DRILL HOLE IN CONC. POWER POLE	S. 47° 03' 13" E.	42.32'
X IN E. RIM WATER VALVE	N. 63° 21' 36" W.	33.92'
TOP C/L FIRE HYDRANT	N. 02° 51' 06" W.	364.81'

SURVEYORS CERTIFICATE: I certify the monument and accessories indicated above were field located on NOVEMBER 13, 19 93

updated 1/19/95

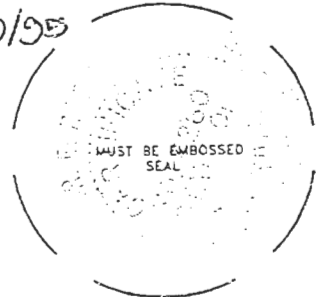
[Signature] PLS 4260  
SIGNATURE

1/30/95  
DATE

CHARLOTTE COUNTY SURVEY DEPT.  
FIRM OR AGENCY

7000 FLORIDA STREET  
ADDRESS

PUNTA GORDA, FLA. 33950  
CITY STATE



510

Completeness checked by: [Signature]  
 Accepted and filed: 3-1-95  
 B.L.M. - I.D. 05323304 Date  
 D.N.R. USE ONLY

SEND TO:  
Department of Natural Resources  
Bureau of Survey and Mapping  
3900 Commonwealth Boulevard  
Mail Station 105  
Tallahassee, Florida 32399

DNR 55-001(16)  
REV. 7/16/92  
PAGE 2 OF 2