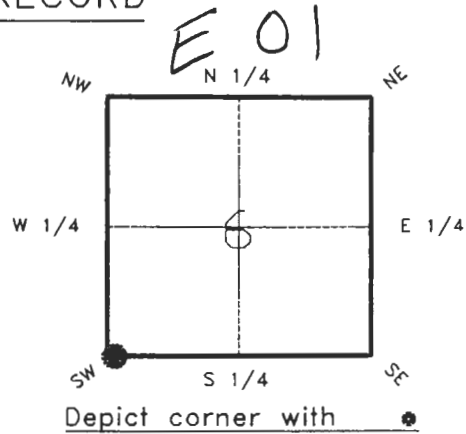


4022E01

FLORIDA DEPARTMENT OF NATURAL RESOURCES
CERTIFIED CORNER RECORD

CORNER DESCRIPTION:

S.W. corner of Section 6 ,
Twp 40 S. , Rge 22 E. ,
Tallahassee Base Meridian,
CHARLOTTE County(s), Florida.



MONUMENTATION DESCRIPTION:

Describe original monument and accessories, or subsequent restoration. Give sources of information. (If no attempt was made to search for the original monument and accessories, this information is not necessary.)
NONE FOUND

Description of corner evidence found:

NO MONUMENT: FALLS IN AUBURN WATERWAY
POSITION DETERMINED BY SUBDIVISION PLAT DATA AND MONUMENTATION

State method(s) to determine corner location (lost corners only):

HORIZONTAL POSITION INFORMATION (if determined):

Latitude 27°01'04.97268" N Longitude 82°09'21.27024" W
Y(Northing) 297413.277 m X(Easting) 184528.699 m Zone FLW
Convergence -0°04'14.969" Scale factor 0.99994413

Coordinate determination (circle one): Field traverse GPS

Horizontal datum (circle one): NAD27 NAD83(1986) NAD83(1990) other (explain)

Order of accuracy as defined in "Standards and Specifications for Geodetic Control Networks" published by the Federal Geodetic Control Committee (circle one):
1st, 2nd, 3rd, class 1 ,

or Minimum Technical Standards (Chapter 21HH-6, F.A.C.) ratio of closure for field data (example 1:10,000), _____ . This does not specify an order of accuracy.

Control point(s) used for survey:

Comments:



MAR 4 1994

SURVEY MAPPING

4022E01

DOC. #

0048014

SKETCH:

S.W. CORNER SEC. 6

40/22 NO MON.; FALLS IN AUBURN WTRWY.

P.K. TAG #0472
1.0' OFF E.P.



AUBURN WATERWAY

KINDRED BLVD.

ALONSO AVE.

C.C.S.D. REF. C.M.
4022-06-E01
GPS OBSERVED
N 297413.198 m
E 184551.563 m

P.K./W TAG #0470
IN POWER POLE

P.K./W.
TAG #047
POWER POLE

PLEASE COMPLETE IN BLACK INK OR TYPE

BASIS OF BEARINGS PORT CHARLOTTE SUBD., PLAT BOOK 5 PG. 3

All bearings and distances must be from the corner to the witness. Indicate whether corner was found, set, or replaced and show north arrow. REFER: F.B. 284-11; F.B. 279-38

SET SURVEY MARKER POST 3.0' W'LY

REFERENCE MEASUREMENTS (at least three vicinity references must be given below even if they appear on the above sketch):

Description	Bearing	Distance
TAG #0470 IN POWER POLE	S.89°36'43"E.	176.47'
TAG #0471 IN POWER POLE	S.22°49'41"W.	129.90'
TAG #0472 IN EDGE PAVEMENT	N.68°15'10"E.	215.53'
CHARLOTTE COUNTY SURVEY DEPT. CONCRETE MONUMENT REF. 4022-06-E01	S.89°58'13"E.	75.01'

SURVEYORS CERTIFICATE: I certify the monument and accessories indicated above were field located on Nov - 17, 19 93.

[Signature] PLS 4260
SIGNATURE

3-1-94
DATE

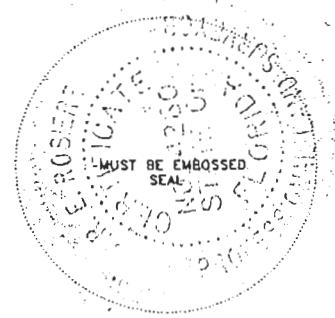
CHARLOTTE COUNTY SURVEY DEPT.

FIRM OR AGENCY
7000 FLORIDA STREET
ADDRESS

PUNTA GORDA, FLA. 33950
CITY STATE

Completeness checked by: B. Linton
Accepted and filed: 4-1-94 Date
B.L.M. - I.D. 12010607 D.N.R. USE ONLY

548



SEND TO:

Department of Natural Resources
Bureau of Survey and Mapping
3900 Commonwealth Boulevard
Mail Station 105
Tallahassee, Florida 32399

DNR 53-001(16)
REV. 7/16/92
PAGE 2 OF 2