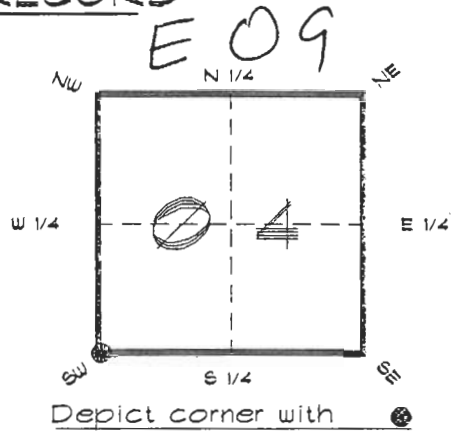


FLORIDA DEPARTMENT OF ENVIRONMENTAL PROTECTION  
CERTIFIED CORNER RECORD

CORNER DESCRIPTION:

S. W. corner of Section 04 ,  
Twp 40 S. , Rge 22 E. ,  
Tallahassee Base Meridian,  
CHARLOTTE County(s), Florida.



MONUMENTATION DESCRIPTION:

Describe original monument and accessories, or subsequent restoration. Give sources of information. (If no attempt was made to search for the original monument and accessories, this information is not necessary.)

Description of corner evidence found:

PK NAIL & DISK, REPLACED WITH CONCRETE MONUMENT IN WELL.

State method(s) to determine corner location (lost corners only):

HORIZONTAL POSITION INFORMATION ( if determined ):

Latitude 27°01'04.65921" N Longitude 82°07'23.62011" W  
Y(Northing) 297400.041 m X(Easting) 187771.695 m Zone FL. W.  
Convergence -0°03'21.523" Scale factor 0.99994302

Coordinate determination (circle one): Field traverse GPS

Horizontal datum (circle one): NAD27 NAD83(1986) NAD83(1990) other (explain)

Order of accuracy as defined in "Standards and Specifications for Geodetic Control Networks" published by the Federal Geodetic Control Committee (circle one):

1st, 2nd, 3rd, class 1

or Minimum Technical Standards (Chapter 21HH-6, F.A.C.) ratio of closure for field data (example 1:10,000), . This does not specify an order of accuracy.

Control point(s) used for survey: CHARLOTTE COUNTY HORIZONTAL CONTROL NETWORK INCLUDES HAVOLINE 2, PLACIDA 2, W260, PUNTPORT, & FLGPS 58 AS B ORDER STATIONS.

Comments:

RECEIVED

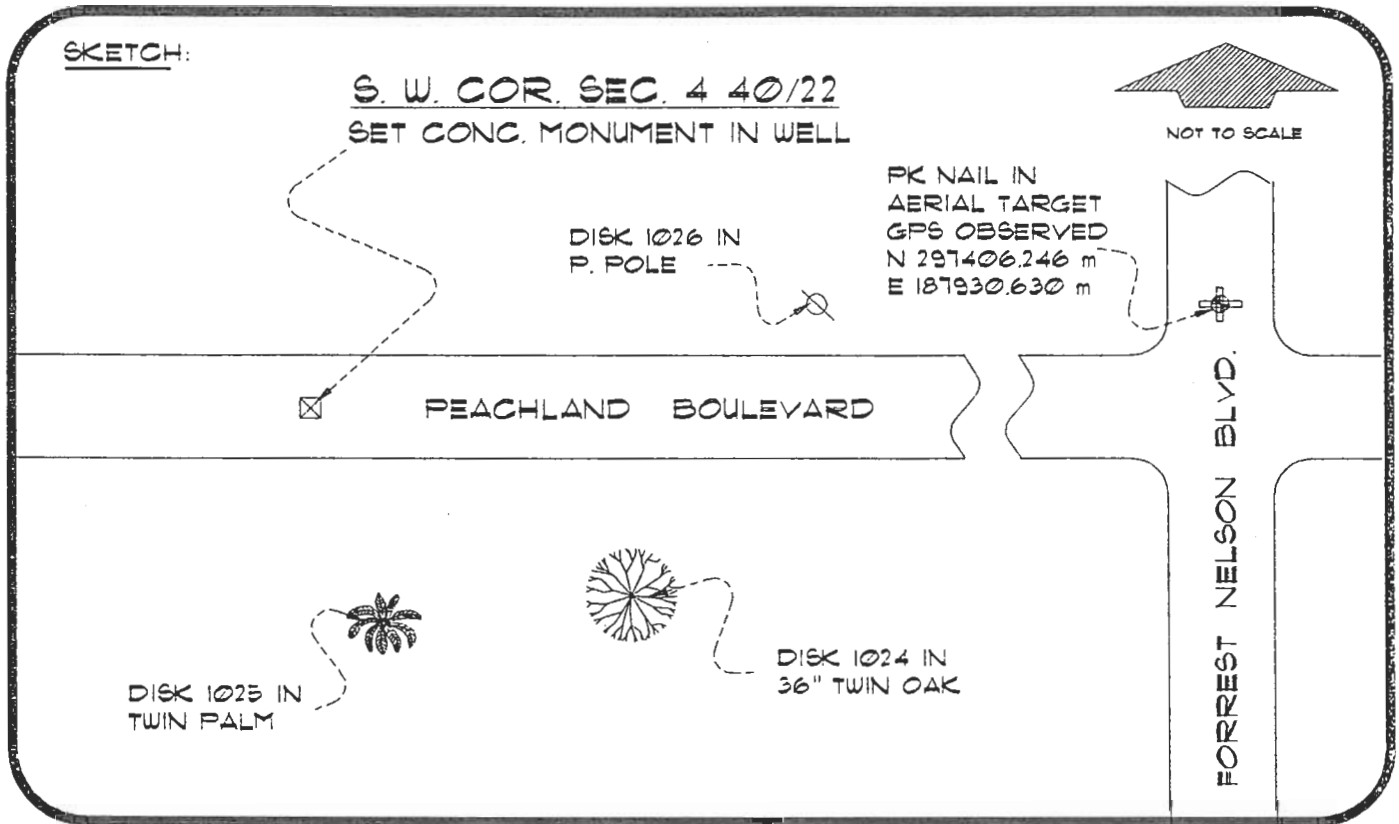
OCT 25 1994

SURVEY & MAPPING

0049895

4022E09

DOC. #



BASIS OF BEARING GRID REF. FLA. ZONE WEST FROM GPS OBSERVATION  
 REFER: FB 264/23 & 301/69

**REFERENCE MEASUREMENTS**

Description	Bearing	Distance
DISK 1026 IN P. POLE	N 84°37'49" E	279.37'
DISK 1025 IN TWIN PALM	S 11°51'11" E	111.49'
DISK 1024 IN TWIN 36" OAK	S 63°27'27" E	186.92'
PK NAIL AT AERIAL TARGET	N 87°45'51" E	521.86'

**SURVEYORS CERTIFICATE:** I certify the monument and accessories indicated above were field located on OCTOBER 5, 1994

R. Rose PLS 4260  
 SIGNATURE

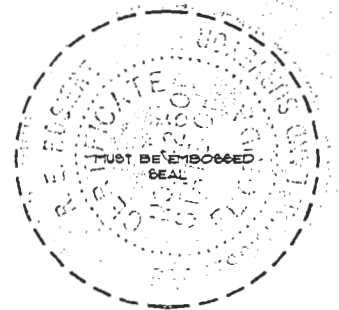
October 18, 1994  
 DATE

CHARLOTTE COUNTY SURVEY DEPT.  
 FIRM OR AGENCY

1000 FLORIDA STREET  
 ADDRESS

PUNTA GORDA, FLA. 33950  
 CITY STATE

547



Completeness checked by: B. Linton  
 Accepted and filed: 11-1-94 Date  
 BLM - ID. 08050409 DNR USE ONLY

**SEND TO:**

Department of Environmental Protection  
 Bureau of Survey and Mapping  
 3900 Commonwealth Boulevard  
 Mail Station 105  
 Tallahassee, Florida 32399