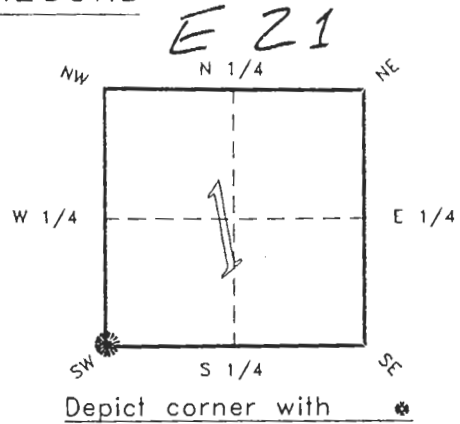


4022E21

FLORIDA DEPARTMENT OF NATURAL RESOURCES  
CERTIFIED CORNER RECORD

CORNER DESCRIPTION:

S.W. corner of Section 1 ,  
Twp 40 S. , Rge 22 E. ,  
Tallahassee Base Meridian,  
CHARLOTTE County(s), Florida.



MONUMENTATION DESCRIPTION:

Describe original monument and accessories, or subsequent restoration. Give sources of information. (If no attempt was made to search for the original monument and accessories, this information is not necessary.)

Description of corner evidence found:

*1" IRON PIPE, REPLACED WITH CONCRETE MONUMENT IN WELL.*

State method(s) to determine corner location (lost corners only):

HORIZONTAL POSITION INFORMATION ( if determined ):

Latitude 27°01'02.95510"N Longitude 82°04'26.37444"W  
Y(Northing) 297343.773 m X(Easting) 192657.410 m Zone FL. W  
Convergence -0°02'01.004" Scale factor 0.99994184

Coordinate determination (circle one): Field traverse  GPS

Horizontal datum (circle one): NAD27 NAD83(1986)  NAD83(1990) other (explain)

Order of accuracy as defined in "Standards and Specifications for Geodetic Control Networks" published by the Federal Geodetic Control Committee (circle one):  
1st,  2nd, 3rd, class 1 ,

or Minimum Technical Standards (Chapter 21HH-6, F.A.C.) ratio of closure for field data (example 1:10,000), \_\_\_\_\_ . This does not specify an order of accuracy.

Control point(s) used for survey: CHARLOTTE COUNTY HORIZONTAL CONTROL NETWORK INCLUDES HAVOLINE 2, PLACIDA 2, W260, PUNTAPOINT, & FLGPS 58 AS B ORDER STATIONS.

Comments:

**RECEIVED**  
OCT 01 1993

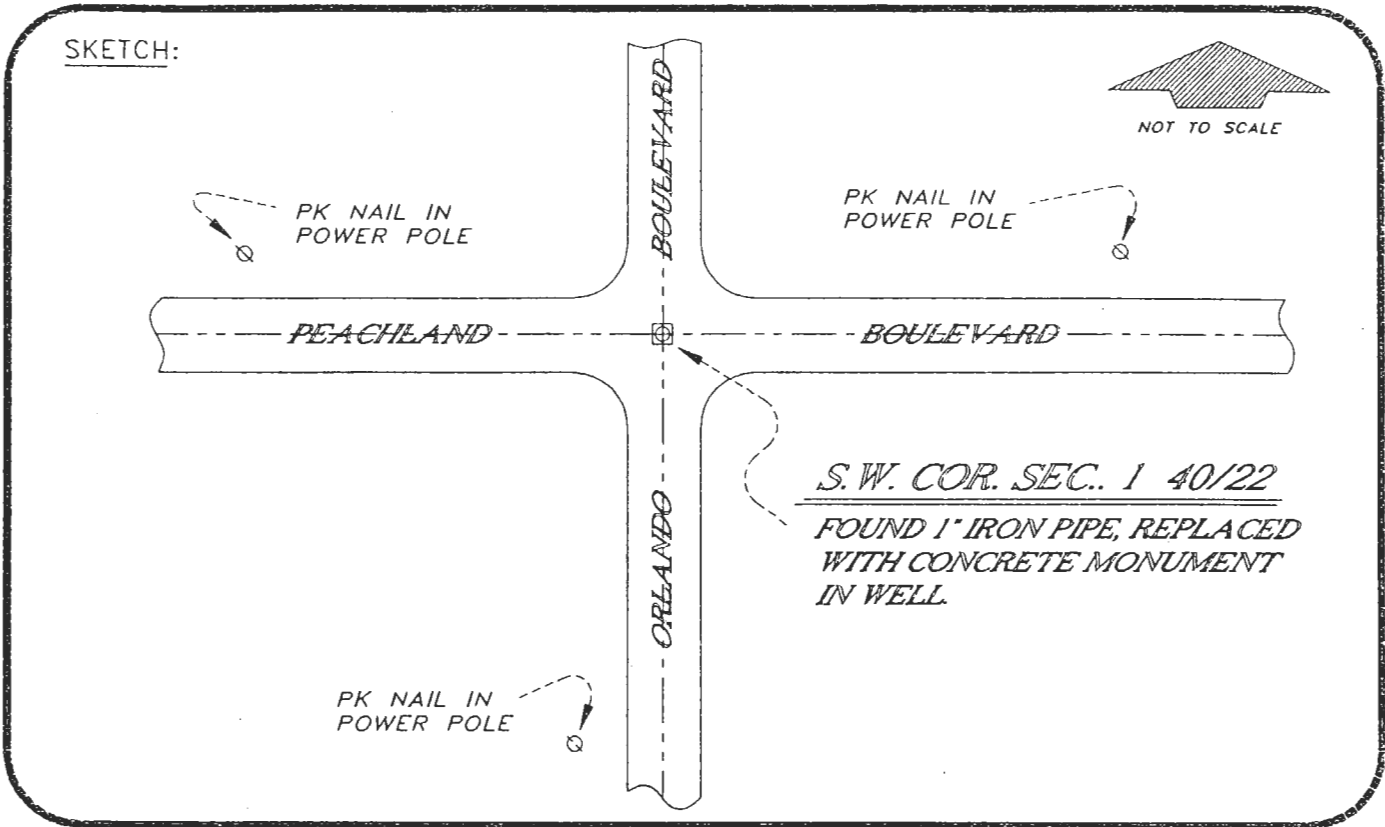
SURVEY & MAPPING

0046783

4022E21

DOC. #

SKETCH:



**BASIS OF BEARING SOLAR OBSERVATION**      **REFER FB 264/75**  
 All bearings and distances must be from the corner to the witness. Indicate whether corner was found, set, or replaced and show north arrow.

**REFERENCE MEASUREMENTS** ( at least three vicinity references must be given below even if they appear on the above sketch ):

Description	Bearing	Distance
PK NAIL IN POWER POLE	N 78°41'09" E	165.70'
PK NAIL IN POWER POLE	S 12°18'52" W	161.36'
PK NAIL IN POWER POLE	N 77°45'06" W	155.04'

**SURVEYORS CERTIFICATE:** I certify the monument and accessories indicated above were field located on AUGUST 31, 1993.

[Signature] PLS 4260

SIGNATURE

9-27-93

DATE

CHARLOTTE COUNTY SURVEY DEPT.

FIRM OR AGENCY

7000 FLORIDA STREET

ADDRESS

PUNTA GORDA, FLA. 33950

CITY

STATE

547



SEND TO:

Department of Natural Resources  
 Bureau of Survey and Mapping  
 3900 Commonwealth Boulevard  
 Mail Station 105  
 Tallahassee, Florida 32399

DNR 53-001(16)  
 REV. 7/16/92  
 PAGE 2 OF 2

Completeness checked by: [Signature]  
 Accepted and filed: 11-1-93 Date  
 B.L.M. - I.D. 11020112 D.N.R. USE ONLY