

4022J01

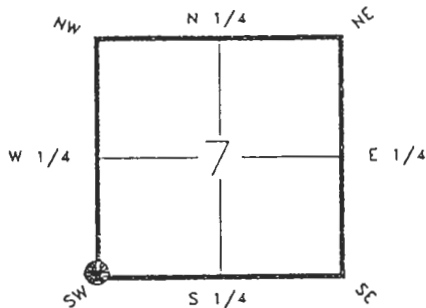
DOC. # **0045925**

FLORIDA DEPARTMENT OF NATURAL RESOURCES
CERTIFIED CORNER RECORD

J-01

CORNER DESCRIPTION:

S.W. corner of Section 7 ,
Twp 40 S. , Rge 22 E. ,
Tallahassee Base Meridian,
CHARLOTTE County(s), Florida.



Depict corner with

MONUMENTATION DESCRIPTION:

Describe original monument and accessories, or subsequent restoration. Give sources of information. (If no attempt was made to search for the original monument and accessories, this information is not necessary.)

NONE FOUND

Description of corner evidence found:

CHARLOTTE COUNTY MONUMENT & WELL

State method(s) to determine corner location (lost corners only):

HORIZONTAL POSITION INFORMATION (if determined):

Latitude 27°00'12.10976"N Longitude 82°09'21.46777"W
Y(Northing) 295786.318(M) X(Easting) 184521.243(M) Zone FL W
Convergence -0°04'14.931' Scale factor 0.99994413

Coordinate determination (circle one): Field traverse GPS

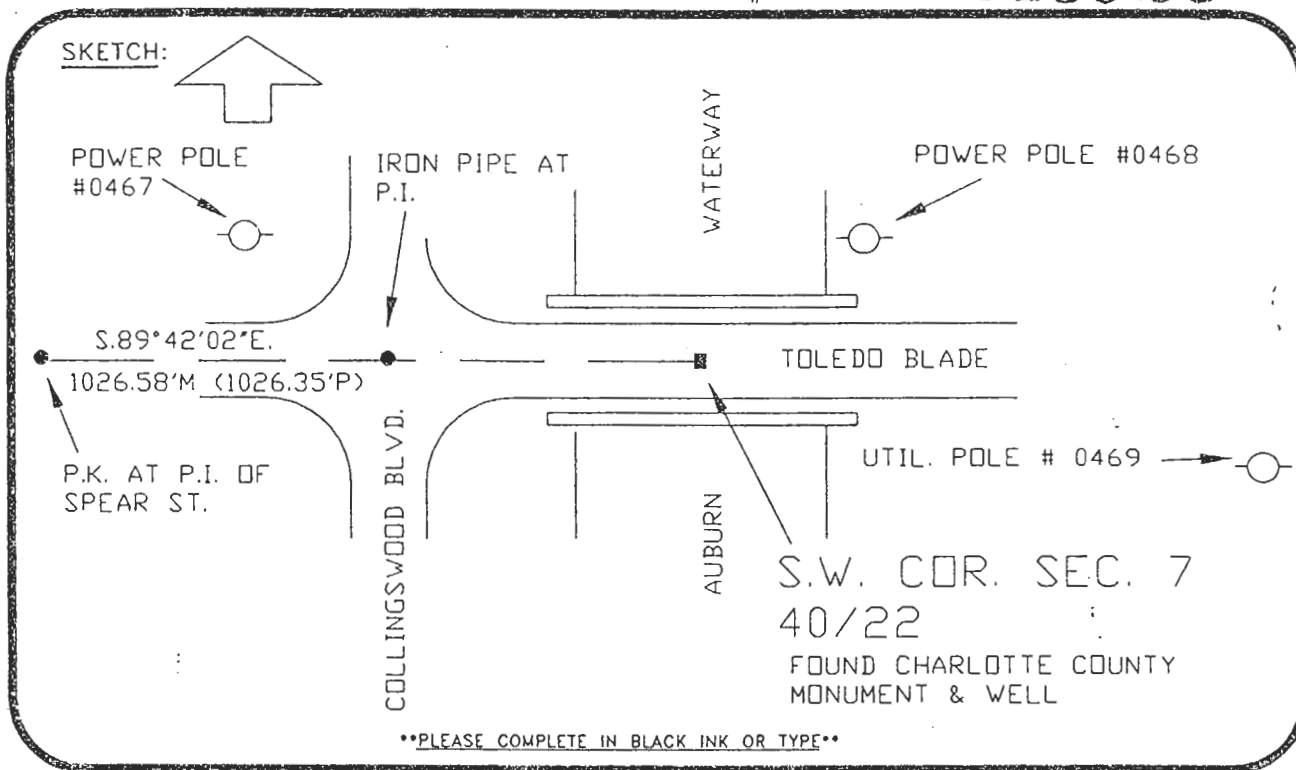
Horizontal datum (circle one): NAD27 NAD83(1986) NAD83(1990) other (explain)

Order of accuracy as defined in "Standards and Specifications for Geodetic Control Networks" published by the Federal Geodetic Control Committee (circle one):
1st, 2nd, 3rd, class 1 ;

or Minimum Technical Standards (Chapter 21HH-6, F.A.C.) ratio of closure for field data (example 1:10,000), _____ . This does not specify an order of accuracy.

Control point(s) used for survey:

Comments:



BEARING REFER TO THE PLAT PORT CHARLOTTE SEC.41 PB. 51 PG. 51-I
All bearings and distances must be from the corner to the witness. Indicate whether corner was found, set, or replaced and show north arrow. REFER: F.B. 279-36

REFERENCE MEASUREMENTS (at least three vicinity references must be given below even if they appear on the above sketch):

Description	Bearing	Distance
FOUND 3/4" IRON PIPE P.I. COLLINGSWOOD BLVD.	N.89°41'27"W.	100.00'
P.K. & TAG. #0467 IN POWER POLE	N.74°35'07"W.	150.99'
P.K. & TAG #0468 IN POWER POLE	N.53°04'10"E.	65.51'
P.K. & TAG. #0469 IN UTIL. POLE	S.79°04'42"E.	182.48'

SURVEYORS CERTIFICATE: I certify the monument and accessories indicated above were field located on JANUARY 27, 1993.

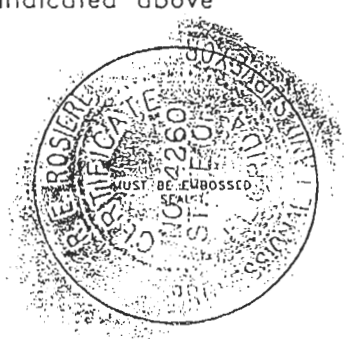
[Signature] PLS 4260
SIGNATURE

July 22, 1993
DATE

CHARLOTTE COUNTY SURVEY DEPT.
FIRM OR AGENCY

7000 FLORIDA STREET
ADDRESS

PUNTA GORDA, FLA. 33950
CITY STATE



Completeness checked by: GR Green
Accepted and filed: 8-93 Date
B.L.M. - I.D. 13120718 D.N.R. USE ONLY

SEND TO:
Department of Natural Resources
Bureau of Survey and Mapping
3900 Commonwealth Boulevard
Mail Station 105
Tallahassee, Florida 32399

DNR 53-001(16)
REV. 7/16/92
PAGE 2 OF 2