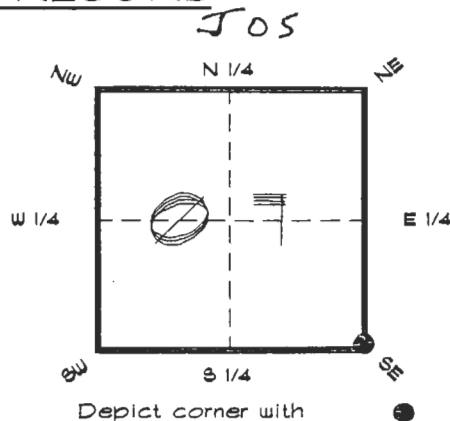


4022J05

FLORIDA DEPARTMENT OF ENVIRONMENTAL PROTECTION
CERTIFIED CORNER RECORD

CORNER DESCRIPTION:

S. E. corner of Section 7,
 Twp 40 S., Rge 22 E.,
 Tallahassee Base Meridian,
CHARLOTTE County(s), Florida.



MONUMENTATION DESCRIPTION:

Describe original monument and accessories, or subsequent restoration. Give sources of information. (If no attempt was made to search for the original monument and accessories, this information is not necessary.)

Description of corner evidence found:

POSITION IN WATERWAY DETERMINED FROM SUBDIVISION PLAT DATA. (NOT FOUND OR SET)

State method(s) to determine corner location (lost corners only):

HORIZONTAL POSITION INFORMATION (if determined):

Latitude 27°00'11.99516" N Longitude 82°08'21.78911" W
 Y(Northing) 295780.866 m X(Easting) 186166.485 m Zone FLW
 Convergence -0°03'47.834" Scale factor 0.99994354

Coordinate determination (circle one): Field traverse GPS

Horizontal datum (circle one): NAD27 NAD83(1986) NAD83(1990) other (explain)

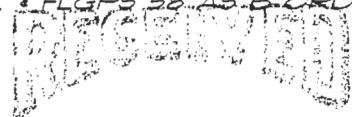
Order of accuracy as defined in Standards and Specifications for Geodetic Control Networks, published by the Federal Geodetic Control Committee (circle one):

1st, 2nd, 3rd class 1

or Minimum Technical Standards (Chapter 6IG17, F.A.C.) ratio of closure for field data (example 1:10,000), _____ . This does not specify an order of accuracy.

Control point(s) used for survey: *CHARLOTTE COUNTY HORIZONTAL CONTROL NETWORK INCLUDES HAYOLINE 2, FLACIDA 2, W260, PUNTPORT, 4 FLGPS 58 AS B-ORDER STATIONS.*

Comments:

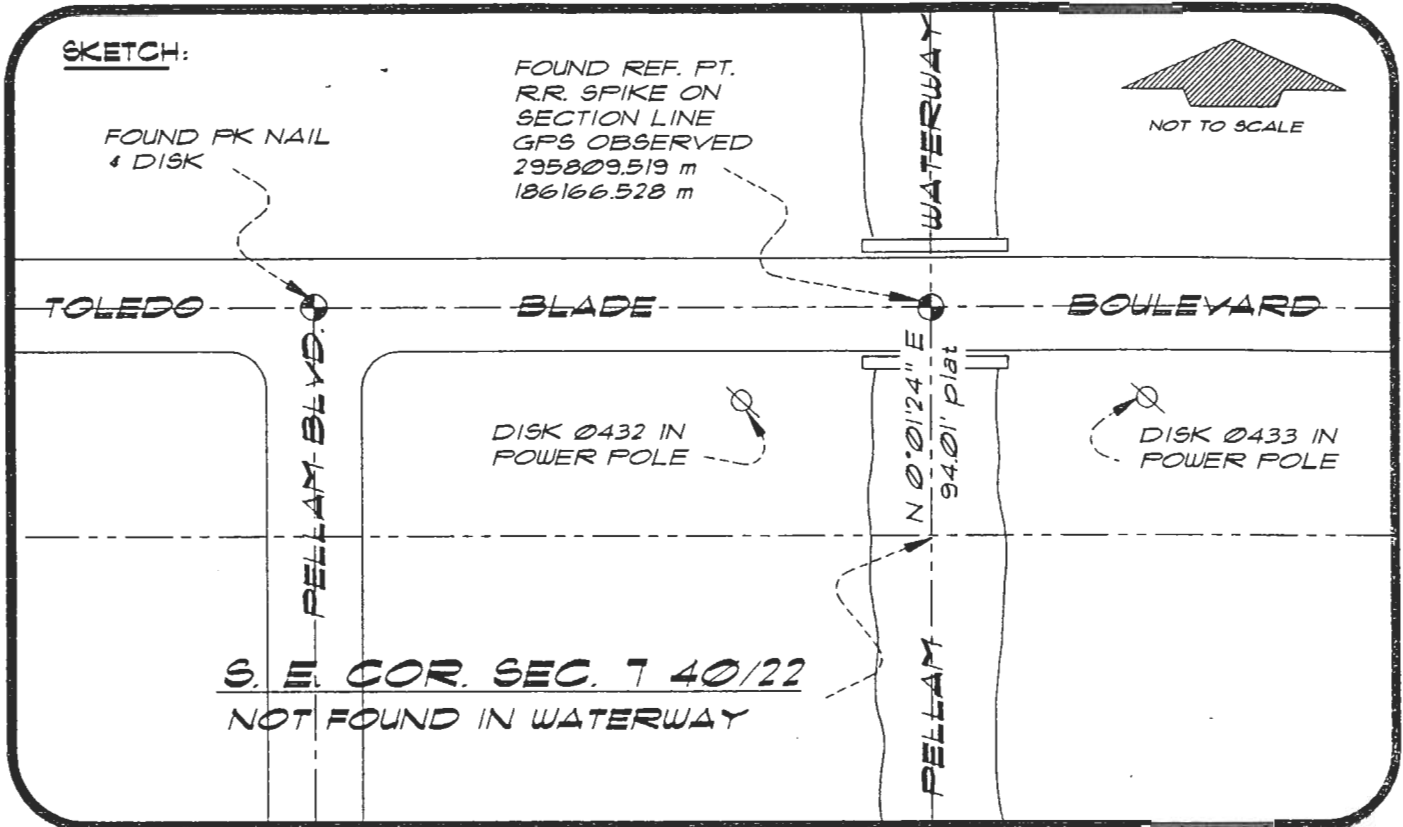


APR 11 1998

4022J05

DOC. #

0048307



BASIS OF BEARING SOLAR OBSERVATION REFER: FB 301/48
 REFERENCE MEASUREMENTS ARE FROM REF. R.R. SPIKE AS
 SECTION CORNER IS IN WATERWAY.

REFERENCE MEASUREMENTS

Description	Bearing	Distance
FOUND FK NAIL & DISK	N 89°53'52" W	273.45' p 4m
DISK Ø432 IN P. POLE	S 60°06'00" W	77.04'
DISK Ø433 IN P. POLE	S 56°53'27" E	72.08'
S. E. COR. SEC. 7 40/22	S 00°01'24" W	94.01'

SURVEYORS CERTIFICATE: I certify the monument and accessories indicated above
 were field located on MARCH 31, 1994

R. P. Rose
 SIGNATURE FLS 4260

April 5, 1994
 DATE

CHARLOTTE COUNTY SURVEY DEPT.
 FIRM OR AGENCY

1000 FLORIDA STREET
 ADDRESS

PUNTA GORDA, FLORIDA 33950
 CITY STATE

548
 WURNOCK



Completeness checked by: B. Hunter
 Accepted and filed: 5-1-94 Date
 B.L.M. - I.D. 18070817 D.E.P. USE ONLY

SEND TO:
 Department of Environmental Protection
 Bureau of Survey and Mapping
 3900 Commonwealth Boulevard
 Mail Station 105
 Tallahassee, Florida 32399