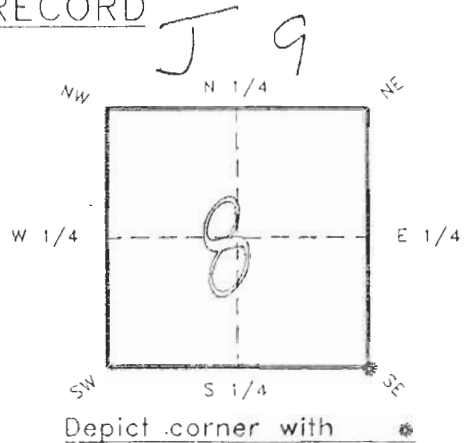


4022J09

FLORIDA DEPARTMENT OF ENVIRONMENTAL PROTECTION
CERTIFIED CORNER RECORD

CORNER DESCRIPTION:

S.E. corner of Section 8 ,
Twp 40 S. , Rge 22 E. ,
Tallahassee Base Meridian,
CHARLOTTE County(s), Florida.



MONUMENTATION DESCRIPTION:

Describe original monument and accessories, or subsequent restoration. Give sources of information. (If no attempt was made to search for the original monument and accessories, this information is not necessary.)

Description of corner evidence found:

PK NAIL

State method(s) to determine corner location (lost corners only):

HORIZONTAL POSITION INFORMATION (if determined):

Latitude 27°00'11.84942" N Longitude 82°07'23.24147" W
Y(Northing) 295774.702 m X(Easting) 187780.546 m Zone FLW
Convergence -0°03'21.250" Scale factor 0.99994302

Coordinate determination (circle one): Field traverse GPS

Horizontal datum (circle one): NAD27 NAD83(1986) NAD83(1990) other (explain)

Order of accuracy as defined in "Standards and Specifications for Geodetic Control Networks" published by the Federal Geodetic Control Committee (circle one):
1st, 2nd, 3rd, class 1 ,

or Minimum Technical Standards (Chapter 21HH-6, F.A.C.) ratio of closure for field data (example 1:10,000), _____ . This does not specify an order of accuracy.

Control point(s) used for survey: CHARLOTTE COUNTY HORIZONTAL CONTROL NETWORK INCLUDES HAVOLINE 2, PLACIDA 2, W260, PUNTAPORT, & FLGPS 58 AS B ORDER STATIONS.

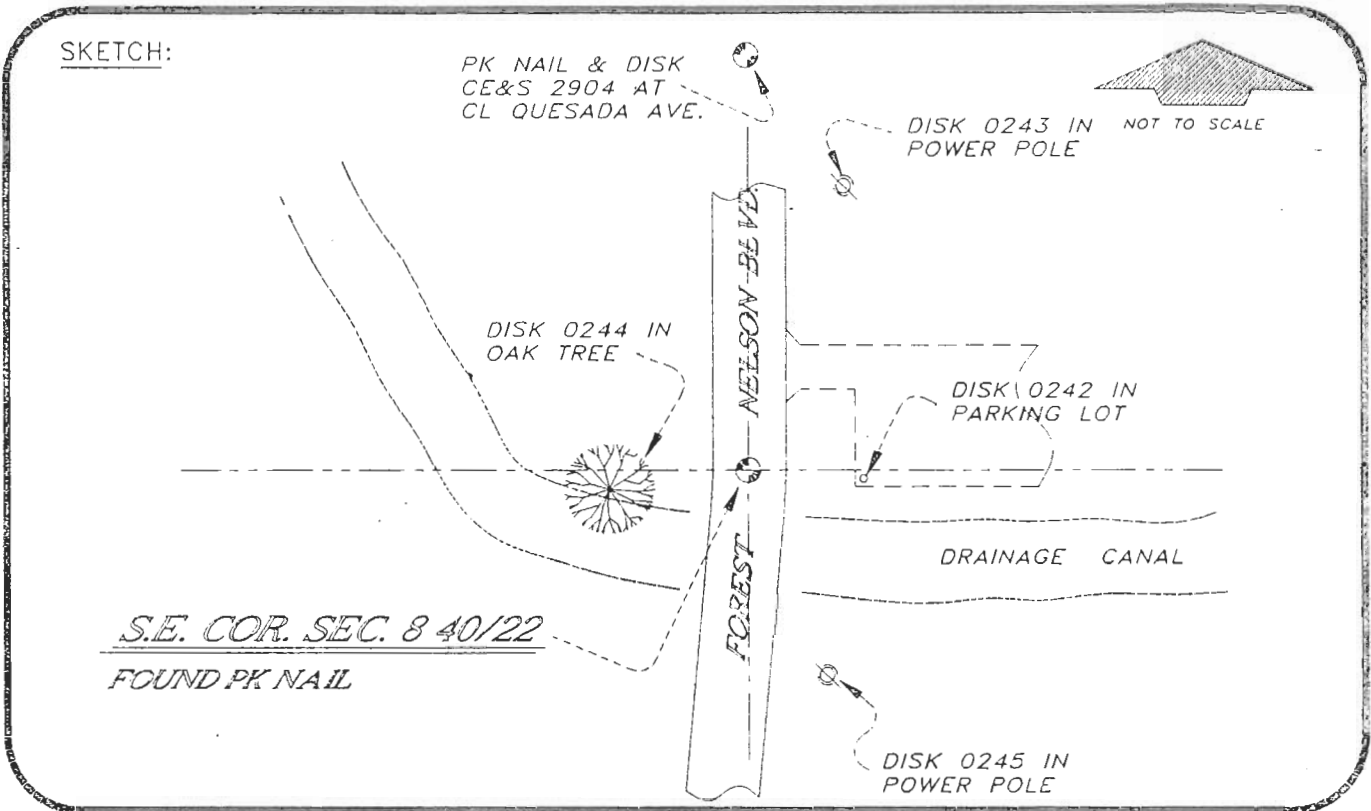
Comments:

0046992

4022J09

DOC. #

SKETCH:



BASIS OF BEARING PLAT DATA

REFER FB 265/28

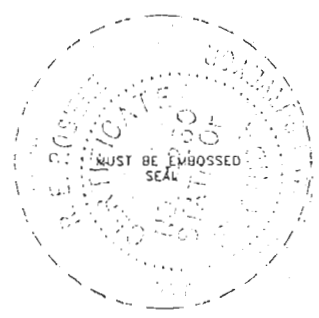
REFERENCE MEASUREMENTS

| Description | Bearing | Distance |
|----------------------------|---------------|----------|
| NAIL & DISK @ QUESADA AVE. | N 00°29'10" W | 2657.86' |
| DISK 0242 IN PARKING LOT | S 88°40'57" E | 56.27' |
| DISK 0243 IN POWER POLE | N 09°25'30" E | 125.35' |
| DISK 0244 IN OAK TREE | S 73°04'33" W | 51.95' |
| DISK 0245 IN POWER POLE | S 14°34'42" E | 79.37' |

SURVEYORS CERTIFICATE: I certify the monument and accessories indicated above were field located on SEPTEMBER 24, 19 92.

[Signature] PLS 4260
 SIGNATURE
10-20-93
 DATE
 CHARLOTTE COUNTY SURVEY DEPT.
 FIRM OR AGENCY
 7000 FLORIDA STREET
 ADDRESS
 PUNTA GORDA, FLA. 33950
 CITY STATE

547



Completeness checked by: B. Hinton
 Accepted and filed: 12-1-93 Date
 B.L.M. - I.D. 17080916 D.N.R. USE ONLY

SEND TO:
 Department of Environmental Protection
 Bureau of Survey and Mapping
 3900 Commonwealth Boulevard
 Mail Station 105
 Tallahassee, Florida 32399