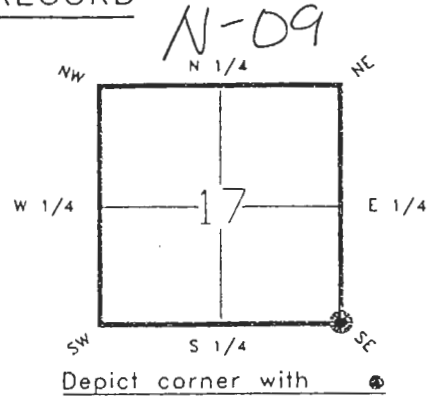


FLORIDA DEPARTMENT OF NATURAL RESOURCES  
CERTIFIED CORNER RECORD

CORNER DESCRIPTION:

S.E. corner of Section 17 ,  
Twp 40 S. , Rge 22 E. ,  
Tallahassee Base Meridian,  
CHARLOTTE County(s), Florida.



MONUMENTATION DESCRIPTION:

Describe original monument and accessories, or subsequent restoration. Give sources of information. (If no attempt was made to search for the original monument and accessories, this information is not necessary.)  
NONE FOUND

Description of corner evidence found:

SET CHARLOTTE COUNTY SURVEY DEPARTMENT CONCRETE MONUMENT

State method(s) to determine corner location (~~lost corners only~~):

OBLITERATED POSITION DETERMINED BY SINGLE PROPORTION OF SUBDIVISION PLAT DISTANCES.(0.35' DIFFERENCE PLAT TO PROPERTY CORN. IN FIELD)

HORIZONTAL POSITION INFORMATION ( if determined ):

Latitude 26°59'19.15324"N Longitude 82°07'24.09775"W  
Y(Northing) 294152.896(M) X(Easting) 187755.355(M) Zone FL W  
Convergence -0°03'21.538" Scale factor 0.99994303

Coordinate determination (circle one): Field traverse   GPS

Horizontal datum (circle one): NAD27 NAD83(1986)  NAD83(1990) other (explain)

Order of accuracy as defined in "Standards and Specifications for Geodetic Control Networks" published by the Federal Geodetic Control Committee (circle one):  
1st,  2nd,  3rd, class 1 ,

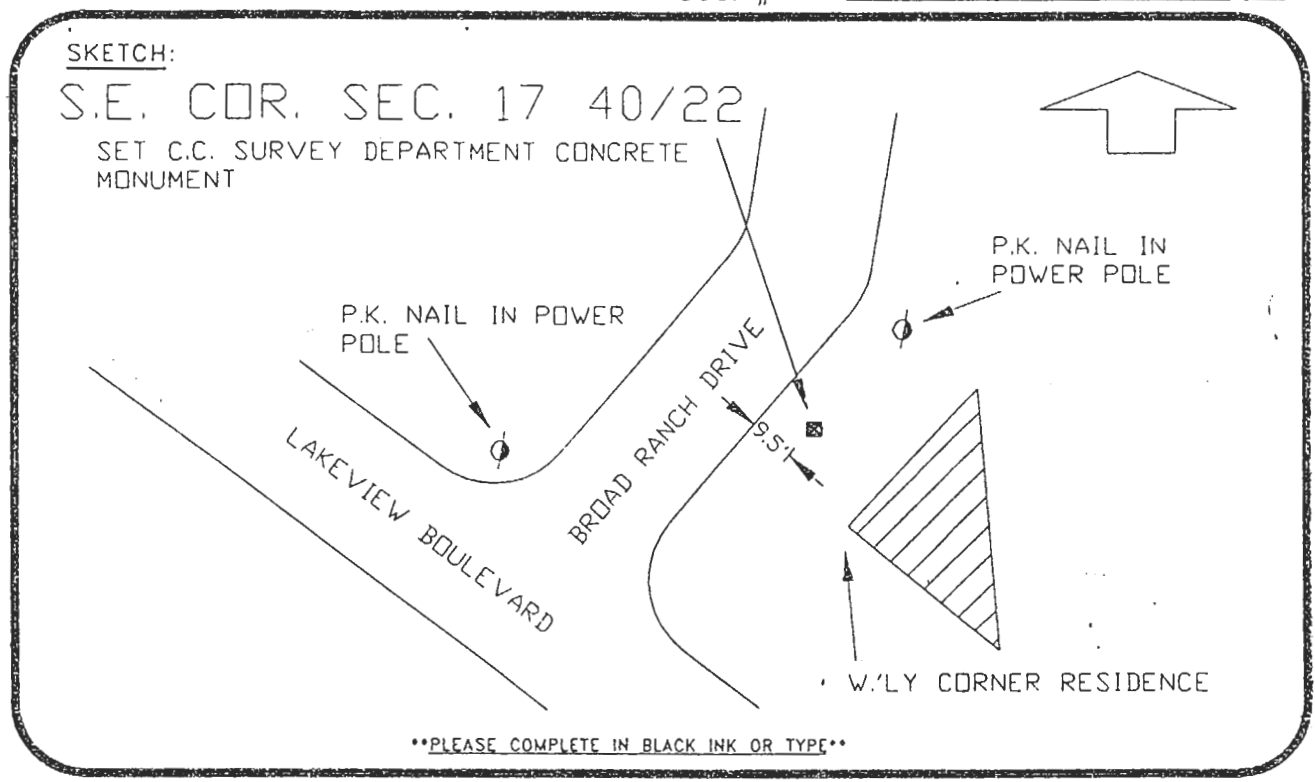
or Minimum Technical Standards (Chapter 21HH-6, F.A.C.) ratio of closure for field data. (example 1:10,000), \_\_\_\_\_ . This does not specify an order of accuracy.

Control point(s) used for survey:

Comments:

0045929

DOC. #



REFER: PORT CHARLOTTE SUBDIVISION, SECTION 23, PLAT BOOK 5, PAGE 14  
 All bearings and distances must be from the corner to the witness. Indicate whether corner was found, set, or replaced and show north arrow.

REFER: F.B. 265-15 BASIS OF BEARING-SOLAR OBSERVATION  
 REFERENCE MEASUREMENTS ( at least three vicinity references must be given below even if they appear on the above sketch ):

Description	Bearing	Distance
W.'LY CORNER RESIDENCE	S.33°58'53"E.	32.26'
P.K. IN POWER POLE	N.46°50'17"E.	56.42'
P.K. IN POWER POLE	S.86°08'59"W.	78.43'

SURVEYORS CERTIFICATE: I certify the monument and accessories indicated above were field located on SEPTEMBER 12, 19 91.

[Signature] PLS 4260  
 SIGNATURE

July 22, 1993  
 DATE

CHARLOTTE COUNTY SURVEY DEPT.  
 FIRM OR AGENCY

7000 FLORIDA STREET  
 ADDRESS

PUNTA GORDA, FLA. 33950  
 CITY STATE



Completeness checked by: GR Green  
 Accepted and filed: 8-93 Date  
 B.L.M. - I.D. 20171621 D.N.R. USE ONLY

SEND TO:  
 Department of Natural Resources  
 Bureau of Survey and Mapping  
 3900 Commonwealth Boulevard  
 Mail Station 105  
 Tallahassee, Florida 32399

DNR 53-001(16)  
 REV. 7/16/92  
 PAGE 2 OF 2