

4022T17.DWG.

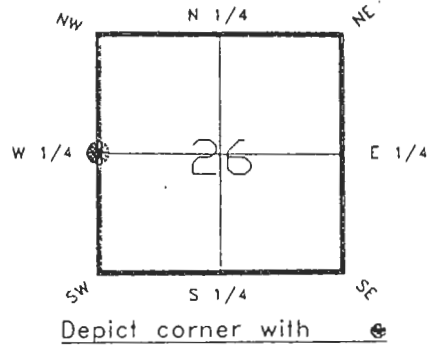
DOC. # **004593**

FLORIDA DEPARTMENT OF NATURAL RESOURCES
CERTIFIED CORNER RECORD

T-17

CORNER DESCRIPTION:

W. 1/4 corner of Section 26,
Twp 40 S., Rge 22 E.,
Tallahassee Base Meridian,
CHARLOTTE County(s), Florida.



MONUMENTATION DESCRIPTION:

Describe original monument and accessories, or subsequent restoration. Give sources of information. (If no attempt was made to search for the original monument and accessories, this information is not necessary.)

Description of corner evidence found:

CONCRETE MONUMENT

State method(s) to determine corner location (lost corners only):

HORIZONTAL POSITION INFORMATION (if determined):

Latitude 26°57'51.54865"N Longitude 82°05'20.37107"W
Y(Northing) 291453.833(M) X(Easting) 191164.844(M) Zone FL W
Convergence -0°02'25.268" Scale factor 0.99994214

Coordinate determination (circle one): Field traverse GPS

Horizontal datum (circle one): NAD27 NAD83(1986) NAD83(1990) other (explain)

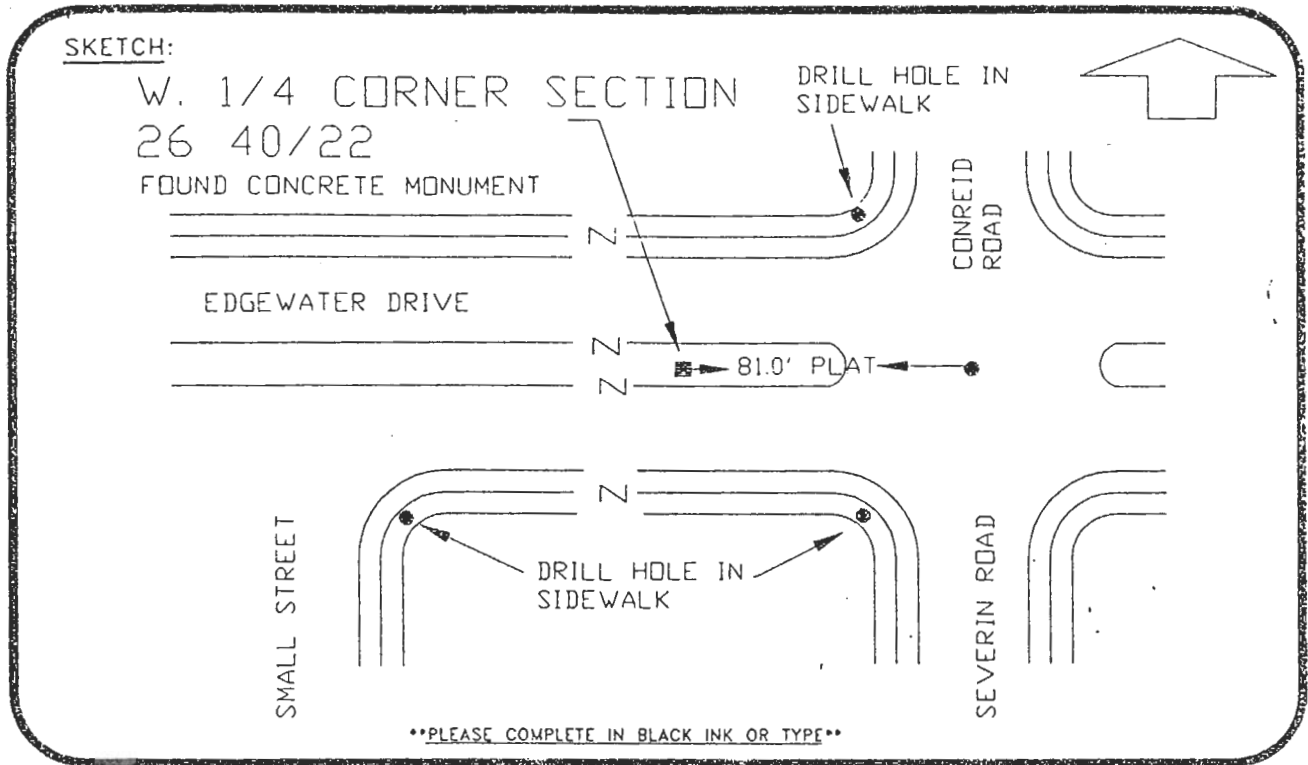
Order of accuracy as defined in "Standards and Specifications for Geodetic Control Networks" published by the Federal Geodetic Control Committee (circle one):

1st, 2nd, 3rd, class 1

or Minimum Technical Standards (Chapter 21HH-6, F.A.C.) ratio of closure for field data (example 1:10,000), . This does not specify an order of accuracy.

Control point(s) used for survey:

Comments:



SET SURVEY MARKER POST 3.0' W'LY REFER: F.B. 279-06

All bearings and distances must be from the corner to the witness. Indicate whether corner was found, set, or replaced and show north arrow.

REFER: PORT CHARLOTTE SUBDIVISION, SECTION 25, PLAT BOOK 5 PAGE 18A
REFERENCE MEASUREMENTS (at least three vicinity references must be given below even if they appear on the above sketch):

Description	Bearing	Distance
DRILL HOLE SET IN SIDEWALK	S.37°33'36"E.	96.94'
DRILL HOLE SET IN SIDEWALK	S.80°43'34"W.	347.25'
DRILL HOLE SET IN SIDEWALK	N.38°22'54"E.	93.43'

SURVEYORS CERTIFICATE: I certify the monument and accessories indicated above were field located on JANUARY 22, 19 92.

[Signature] PLS 4260
SIGNATURE

July 22, 1993
DATE

CHARLOTTE COUNTY SURVEY DEPT.
FIRM OR AGENCY

7000 FLORIDA STREET
ADDRESS

PUNTA GORDA, FLA. 33950
CITY STATE



Completeness checked by: LRG/ghem
Accepted and filed: 8-93
Date
B.L.M. - I.D. 25000426 D.N.R. USE ONLY

SEND TO:

Department of Natural Resources
Bureau of Survey and Mapping
3900 Commonwealth Boulevard
Mail Station 105
Tallahassee, Florida 32399

DNR 53-001(16)
REV. 7/16/92
PAGE 2 OF 2