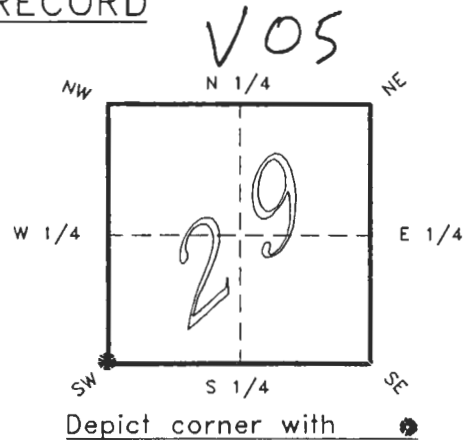


FLORIDA DEPARTMENT OF ENVIRONMENTAL PROTECTION
CERTIFIED CORNER RECORD

CORNER DESCRIPTION:

S.W. corner of Section 29 ,
Twp 40 S. , Rge 22 E. ,
Tallahassee Base Meridian,
CHARLOTTE County(s), Florida.



MONUMENTATION DESCRIPTION:

Describe original monument and accessories, or subsequent restoration. Give sources of information. (If no attempt was made to search for the original monument and accessories, this information is not necessary.)

Description of corner evidence found:

CONCRETE MONUMENT

State method(s) to determine corner location (lost corners only):

HORIZONTAL POSITION INFORMATION (if determined):

Latitude 26°57'33.68942" N Longitude 82°08'23.35914" W
Y(Northing) 290908.751 m X(Easting) 186117.807 m Zone FLW
Convergence -0°03'48.202" Scale factor 0.99994355

Coordinate determination (circle one): Field traverse **GPS**

Horizontal datum (circle one): NAD27 NAD83(1986) **NAD83(1990)** other (explain)

Order of accuracy as defined in "Standards and Specifications for Geodetic Control Networks" published by the Federal Geodetic Control Committee (circle one):
1st, **2nd**, 3rd, class 1 ,

or Minimum Technical Standards (Chapter 21HH-6, F.A.C.) ratio of closure for field data (example 1:10,000), _____ . This does not specify an order of accuracy.

Control point(s) used for survey: *CHARLOTTE COUNTY HORIZONTAL CONTROL NETWORK INCLUDES HAVOLINE 2, PLACIDA 2, W260, PUNTAPOINT, & FLGPS 58 AS B ORDER STATIONS.*

Comments:

REPLACES C.C.R. DOC. 0046995 (CORRECTION TO EAST STATE PLANE COORDINATE)

MAR 4 1994

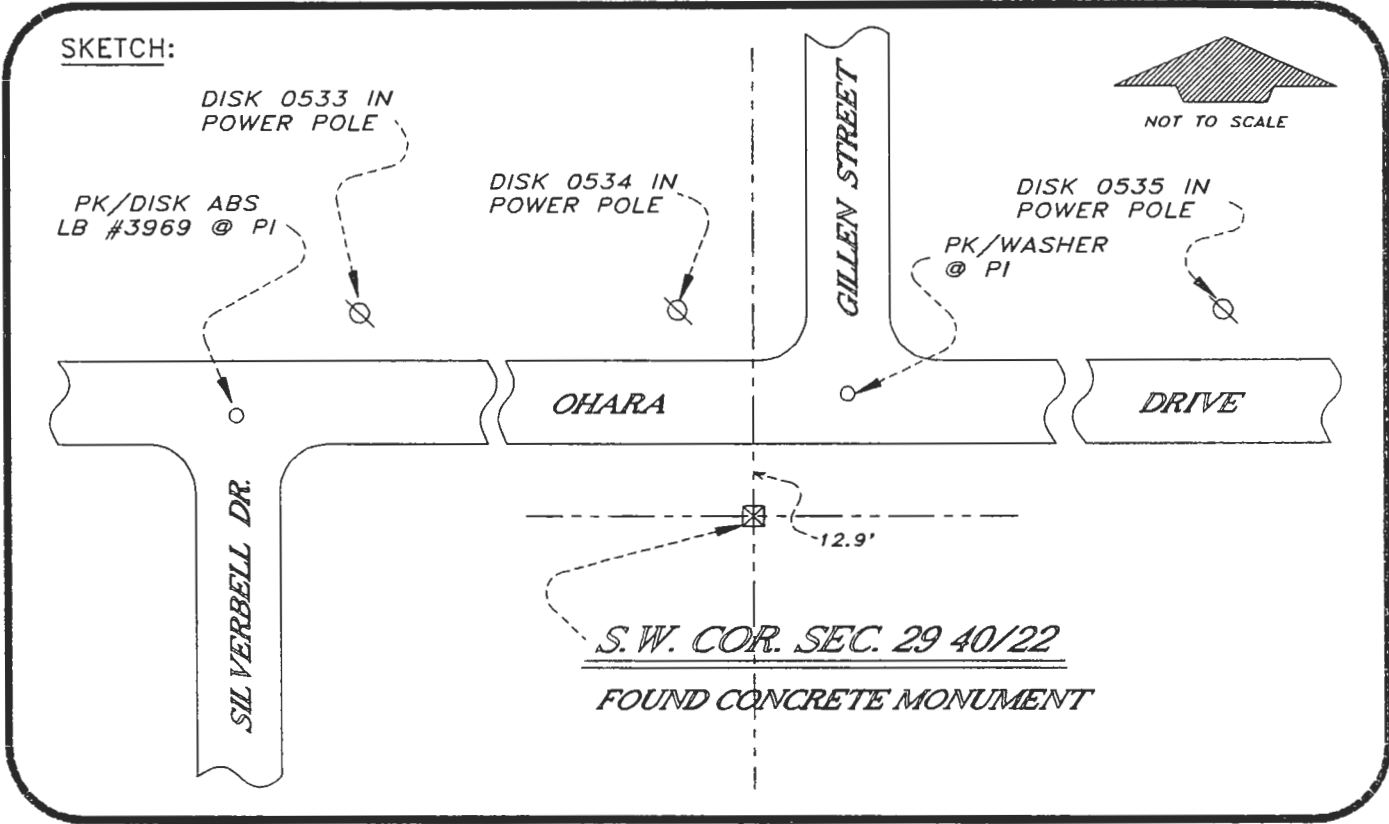
COUNTY CLERK

4022V05

DOC. #

0048016

SKETCH:



BASIS OF BEARING SOLAR OBSERVATION

REFER: FB 279/46

SET SURVEY MARKER POST 3.0' S'LY

REFERENCE MEASUREMENTS

Description	Bearing	Distance
DISK 0533 IN POWER POLE	N 71°08'39" W	134.01'
DISK 0534 IN POWER POLE	N 10°34'37" W	47.34'
DISK 0535 IN POWER POLE	N 74°07'18" E	177.96'
PK/WASHER @ P.I.	N 38°53'20" E	30.94'
PK/DISK ABS LB #3969	N 82°00'34" W	168.82'

SURVEYORS CERTIFICATE: I certify the monument and accessories indicated above were field located on OCTOBER 28, 19 93.

R. Rose
SIGNATURE

PLS 4260

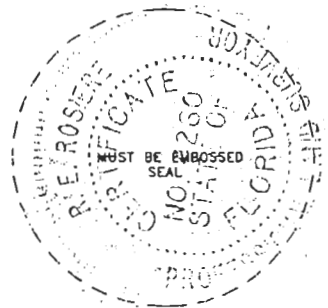
3-1-94
DATE

CHARLOTTE COUNTY SURVEY DEPT.

FIRM OR AGENCY

7000 FLORIDA STREET
ADDRESS

PUNTA GORDA, FLA. 33950
CITY STATE



510

Completeness checked by: *B. Linton*

Accepted and filed: 4-1-94
Date

B.L.M. - I.D. 31302932

D.N.R. USE ONLY

SEND TO:

Department of Environmental Protection
Bureau of Survey and Mapping
3900 Commonwealth Boulevard
Mail Station 105
Tallahassee, Florida 32399