

4023A03

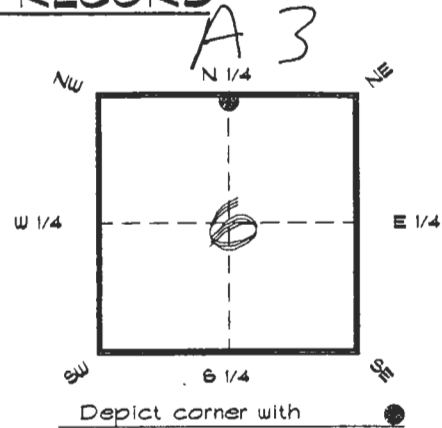
DOC. # **0048018**

FLORIDA DEPARTMENT OF ENVIRONMENTAL PROTECTION
CERTIFIED CORNER RECORD

CORNER DESCRIPTION:

N 1/4 corner of Section 6,
Twp 40 S., Rge 23 E.,
Tallahassee Base Meridian,

CHARLOTTE County(s), Florida.
DESOTO



MONUMENTATION DESCRIPTION:

Describe original monument and accessories, or subsequent restoration. Give sources of information. (If no attempt was made to search for the original monument and accessories, this information is not necessary.)

Description of corner evidence found:

*CONCRETE MONUMENT WITH ALUMINUM DISK
P.R.M. P.L.S. 2405 (NO STEEL SET R.R. SPIKE ADJACENT)*

State method(s) to determine corner location (lost corners only):

HORIZONTAL POSITION INFORMATION (if determined):

Latitude 27°01'55.35023" N Longitude 82°02'57.58419" W

Y(Northing) 298955.145 m X(Easting) 195105.537 m Zone FLW

Convergence -0°01'20.710" Scale factor 0.99994147

Coordinate determination (circle one): Field traverse GPS

Horizontal datum (circle one): NAD27 NAD83(1986) NAD83(1990) other (explain)

Order of accuracy as defined in Standards and Specifications for Geodetic Control Networks "published by the Federal Geodetic Control Committee (circle one):
1st, 2nd, 3rd, class _____

or Minimum Technical Standards (Chapter 6IG17, F.A.C.) ratio of closure for field data (example 1:10,000), _____ . This does not specify an order of accuracy.

Control point(s) used for survey: *CHARLOTTE COUNTY HORIZONTAL CONTROL NETWORK INCLUDES HAVOLINE 2, PLACIDA 2, W260, PUNTPORT, & FLGPS 58 AS B ORDER STATIONS.*

Comments:



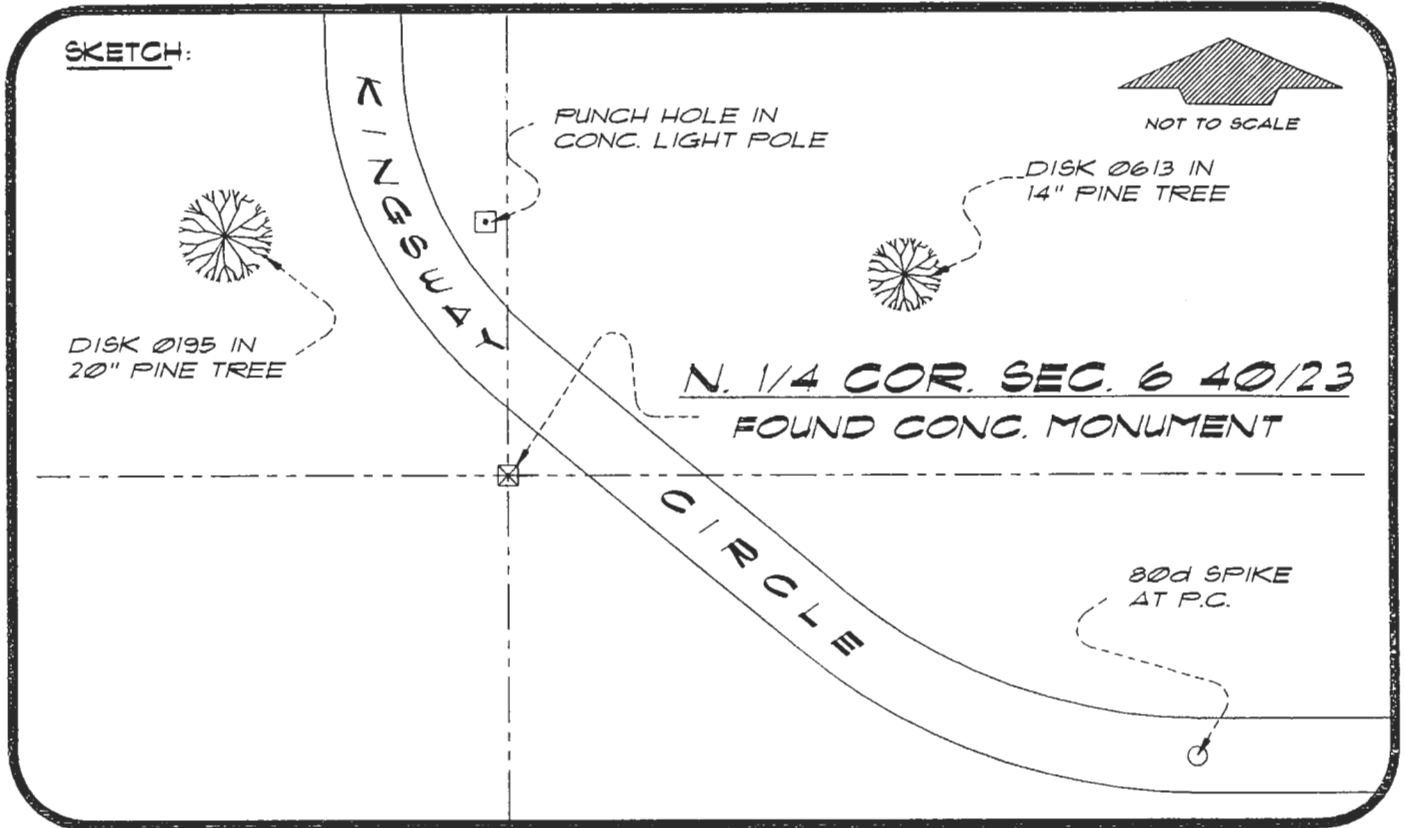
MAR 23 1994

SURVEY & MAPPING

4023A03

DOC. #

0048013



BASIS OF BEARING SOLAR OBSERVATION

REFER: FB 285/45

REFERENCE MEASUREMENTS

Description	Bearing	Distance
DISK 0195 IN 20" PINE	N 43°04'51" W	158.26'
PUNCH HOLE IN L. POLE	N 01°59'48" W	129.38'
DISK 0613 IN 14" PINE	N 66°53'49" E	205.94'
80d SPIKE AT P.C.	S 68°04'46" E	437.32'

SURVEYORS CERTIFICATE: I certify the monument and accessories indicated above were field located on MARCH 4, 1994

R. Rose PLS 4260

SIGNATURE

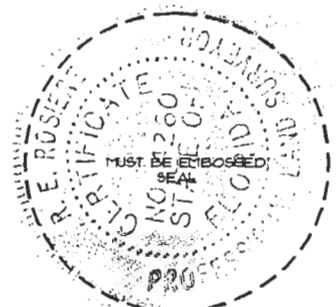
3-17-94
DATE

CHARLOTTE COUNTY SURVEY DEPT.
FIRM OR AGENCY

1000 FLORIDA STREET
ADDRESS

PUNTA GORDA, FLORIDA 33950
CITY STATE

VA
547



Completeness checked by: B. Linton

Accepted and filed: 4-1-94 Date

BLM. - ID. 06C0031 D.N.R. USE ONLY

SEND TO:

Department of Environmental Protection
Bureau of Survey and Mapping
3900 Commonwealth Boulevard
Mail Station 105
Tallahassee, Florida 32399