

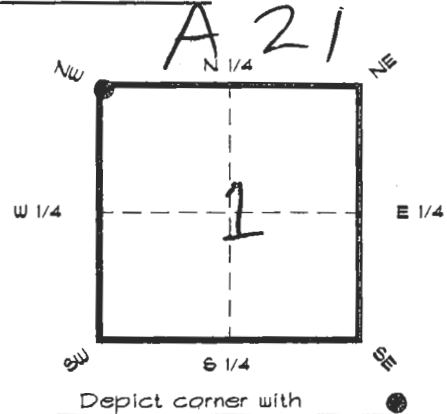
4023A21

FLORIDA DEPARTMENT OF ENVIRONMENTAL PROTECTION  
CERTIFIED CORNER RECORD

CORNER DESCRIPTION:

N. W. corner of Section 1,  
Twp 40 S., Rge 23 E.,  
Tallahassee Base Meridian,

CHARLOTTE County(s), Florida.  
DESOTO



MONUMENTATION DESCRIPTION:

Describe original monument and accessories, or subsequent restoration. Give sources of information. (If no attempt was made to search for the original monument and accessories, this information is not necessary.)

Description of corner evidence found:

U.S.G.L.O. 6" DIA. CONCRETE MONUMENT ( SET IN DEPENDENT RESURVEY 1940 )

State method(s) to determine corner location (lost corners only):

HORIZONTAL POSITION INFORMATION ( if determined ):

Latitude 27°02'06.62814" N Longitude 81°58'29.84677" W

Y(Northing) 299301.535 m X(Easting) 202484.677 m Zone FLW

Convergence 0°00'40.978" Scale factor 0.99994125

Coordinate determination (circle one): Field traverse (GPS)

Horizontal datum (circle one): NAD27 NAD83(1986) (NAD83(1990)) other (explain)

Order of accuracy as defined in Standards and Specifications for Geodetic Control Networks published by the Federal Geodetic Control Committee (circle one): 1st, (2nd), 3rd, class 1,

or Minimum Technical Standards (Chapter 6IG17, F.A.C.) ratio of closure for field data (example 1:10,000), \_\_\_\_\_ . This does not specify an order of accuracy.

Control point(s) used for survey: CHARLOTTE COUNTY HORIZONTAL CONTROL NETWORK INCLUDES HAYOLINE 2, FLACIDA 2, W260, PUNTPORT, & FLGPS 58 AS B ORDER STATIONS.

Comments:

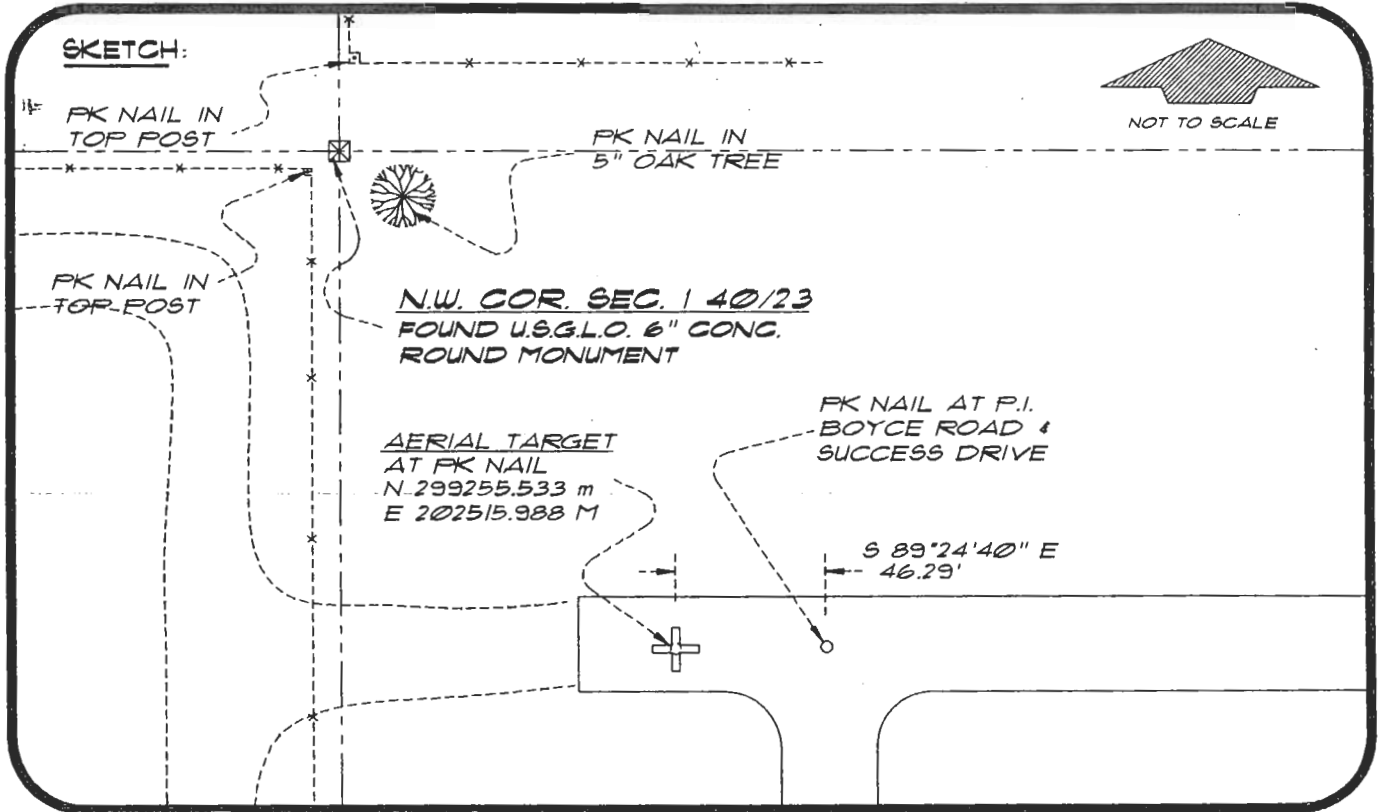
DEC 27 1994

SURVEY & MAPPING

0050496

4023A21

DOC. #



BASIS OF BEARING SOLAR OBSERVATION  
SET SURVEY MARKER POST 3.0' W'LY

REFER: FB 25/22

REFERENCE MEASUREMENTS

Description	Bearing	Distance
FK NAIL IN 5" OAK	S 64°48'31" E	7.41'
FK NAIL IN FENCE POST	S 47°16'34" W	1.24'
FK NAIL IN FENCE POST	N 01°21'09" E	24.57'
FK NAIL AT AERIAL TARGET	S 34°13'46" E	182.58'

SURVEYORS CERTIFICATE: I certify the monument and accessories indicated above were field located on DECEMBER 14, 1993

*R. Ros*  
SIGNATURE

PLS 4260

December 21, 1994  
DATE

CHARLOTTE COUNTY SURVEY DEPT.  
FIRM OR AGENCY

1000 FLORIDA STREET  
ADDRESS

PUNTA GORDA, FLORIDA 33950  
CITY STATE

546



Completeness checked by: *R. Ros*  
Accepted and filed: *R. Ros*  
BLM. - ID. 02353601 Date 01-95  
DNR USE ONLY

SEND TO:

Department of Environmental Protection  
Bureau of Survey and Mapping  
3900 Commonwealth Boulevard  
Mail Station 105  
Tallahassee, Florida 32399