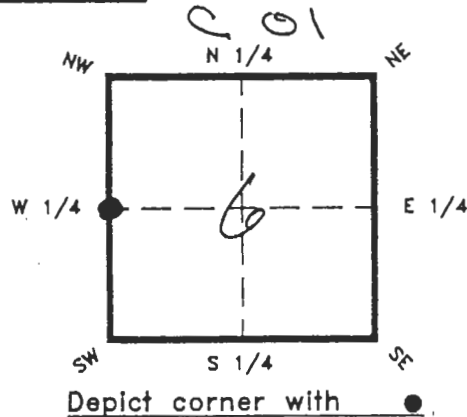


FLORIDA DEPARTMENT OF NATURAL RESOURCES
CERTIFIED CORNER RECORD

CORNER DESCRIPTION:

W 1/4 corner of Section 6 ,
Twp 40 S. , Rge 23 E. ,
Tallahassee Base Meridian,
CHARLOTTE County(s), Florida.



MONUMENTATION DESCRIPTION:

Describe original monument and accessories, or subsequent restoration. Give sources of information. (If no attempt was made to search for the original monument and accessories, this information is not necessary.)

ORIGINAL CORNER NOT FOUND. NO CORNER WITNESSES FOUND

Description of corner evidence found:

FOUND N.W. COR. AND S.W. COR. OF SECTION 6.

RECEIVED

AUG 13 1993

State method(s) to determine corner location (lost corners only):

W. 1/4 CORNER SET AT MIDPOINT

SURVEY & MAPPING

HORIZONTAL POSITION INFORMATION (If determined):

Latitude _____ Longitude _____

Y(Northing) 978179.5884 X(Easting) 637432.3977 Zone WEST

Convergence -0°01'34".130 Scale factor 0.99994158

Coordinate determination (circle one): Field traverse GPS

Horizontal datum (circle one): NAD27 NAD83(1986) NAD83(1990) other (explain)

Order of accuracy as defined in "Standards and Specifications for Geodetic Control Networks" published by the Federal Geodetic Control Committee (circle one):

1st, 2nd, 3rd, class _____ ,

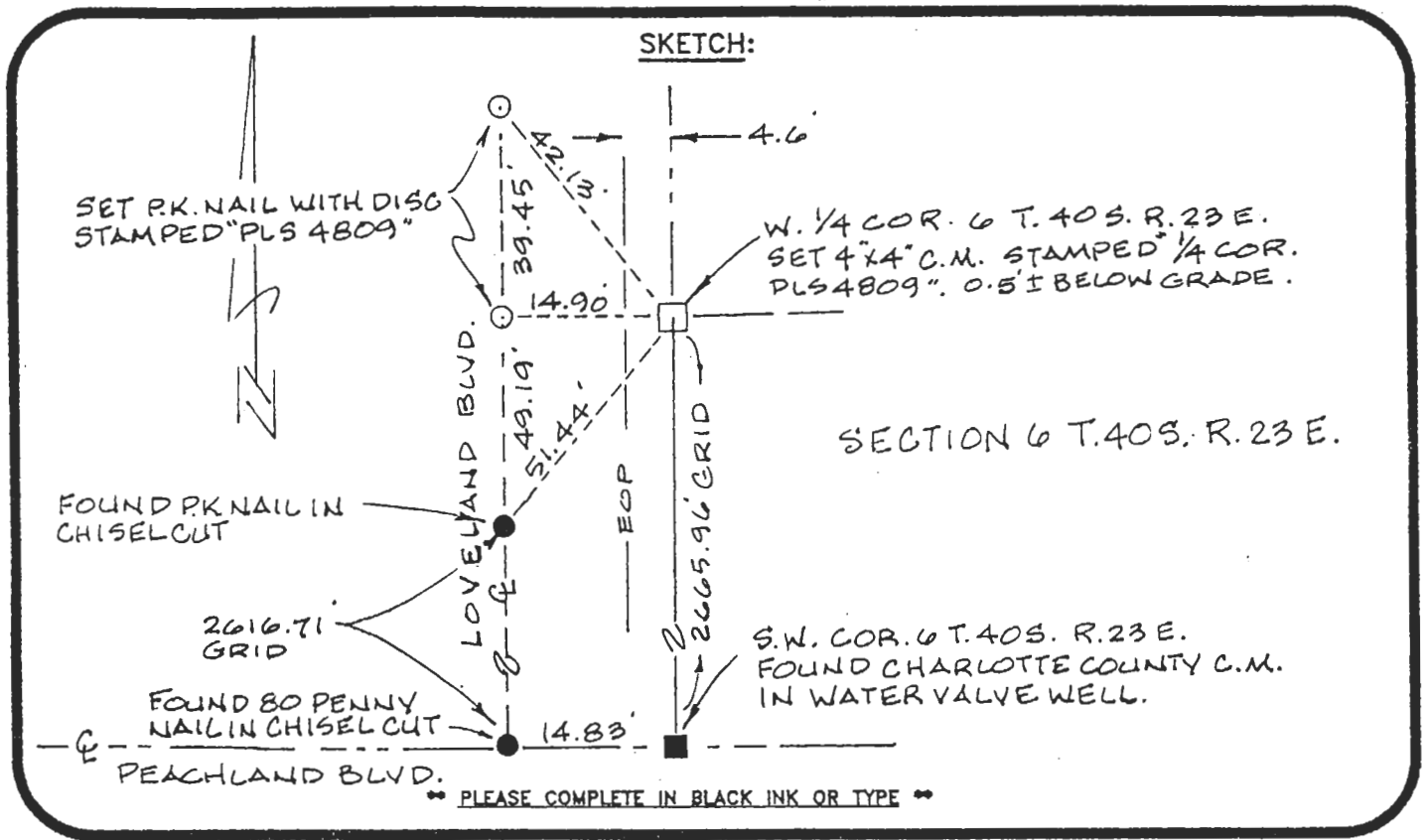
or Minimum Technical Standards (Chapter 21HH-6, F.A.C.) ratio of closure for field data (example 1:10,000), 1:57584 . This does not specify an order of accuracy.

Control point(s) used for survey: CHARLOTTE COUNTY PUBLIC WORKS GPS DEPT.

DESCRIPTOR: 4023-06-A01 (N.W.C. SEC 6)

4023-06-E01 (S.W.C. SEC 6)

Comments:



PLEASE COMPLETE IN BLACK INK OR TYPE

All bearings and distances must be from the corner to the witness. Indicate whether corner was found, set, or replaced and show north arrow.

REFERENCE MEASUREMENTS (at least three vicinity references must be given below even if they appear on the above sketch):

Description	Bearing	Distance
FOUND P.K. NAIL IN CHISEL CUT	S 17° 08' 41" W	51.44'
SET P.K. NAIL W/DISC (PLS 4809)	N 89° 52' 32" W	14.90'
SET P.K. NAIL W/DISC (PLS 4809)	N 20° 24' 31" W	42.13'
EAST EDGE OF PAVEMENT	WESTERLY	4.6'

SURVEYORS CERTIFICATE: I certify the monument and accessories indicated above were field located on JULY 16, 19 93.

Dana B. Spigener 4809
SIGNATURE PLS NO.

AUGUST 10, 1993
DATE

SPIGENER LAND SURVEYING
FIRM OR AGENCY LB. NO.

10128 WILMINGTON BLVD (location)
ADDRESS

ENGLEWOOD FLA 34224
CITY STATE

PO BOX 416, ZIP 34295 (MAIL)

Completeness checked by: [Signature]
Accepted and filed: 9.9.93 Date
B.L.M. - I.D. 01002406 D.N.R. USE ONLY

00547



SEND TO:

Department of Natural Resources
Bureau of Survey and Mapping
3900 Commonwealth Boulevard
Mail Station 105
Tallahassee, Florida 32399

DNR 53-001(16)
REV. 7/16/92
PAGE 2 OF 2