

4023C25

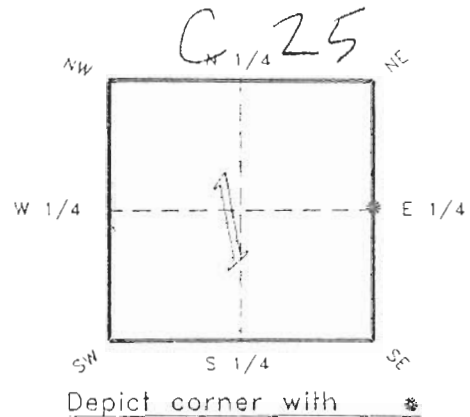
DOC. # :

0046993

FLORIDA DEPARTMENT OF ENVIRONMENTAL PROTECTION
CERTIFIED CORNER RECORD

CORNER DESCRIPTION:

E. 1/4 corner of Section 1 ,
Twp 40 S. , Rge 23 E. ,
Tallahassee Base Meridian,
CHARLOTTE County(s), Florida.



MONUMENTATION DESCRIPTION:

Describe original monument and accessories, or subsequent restoration. Give sources of information. (If no attempt was made to search for the original monument and accessories, this information is not necessary.)

Description of corner evidence found:

RAILROAD SPIKE 0.82' EAST OF CENTER LINE HWY. 17

State method(s) to determine corner location (lost corners only):

HORIZONTAL POSITION INFORMATION (if determined):

Latitude 27°01'39.98079"N Longitude 81°57'31.44240"W
Y(Northing) 298481.831 m X(Easting) 204094.605 m Zone FLW
Convergence 0°01'07.508" Scale factor 0.99994138

Coordinate determination (circle one):

Field traverse GPS

Horizontal datum (circle one): NAD27 NAD83(1986) NAD83(1990) other (explain)

Order of accuracy as defined in "Standards and Specifications for Geodetic Control Networks" published by the Federal Geodetic Control Committee (circle one):
1st, 2nd, 3rd, class 1 ,

or Minimum Technical Standards (Chapter 21HH-6, F.A.C.) ratio of closure for field data (example 1:10,000), _____ . This does not specify an order of accuracy.

Control point(s) used for survey: *CHARLOTTE COUNTY HORIZONTAL CONTROL NETWORK INCLUDES HAVOLINE 2, PLACIDA 2, W260, PUNTAPORT, & FLGPS 58 AS B ORDER STATIONS.*

Comments:

0046998

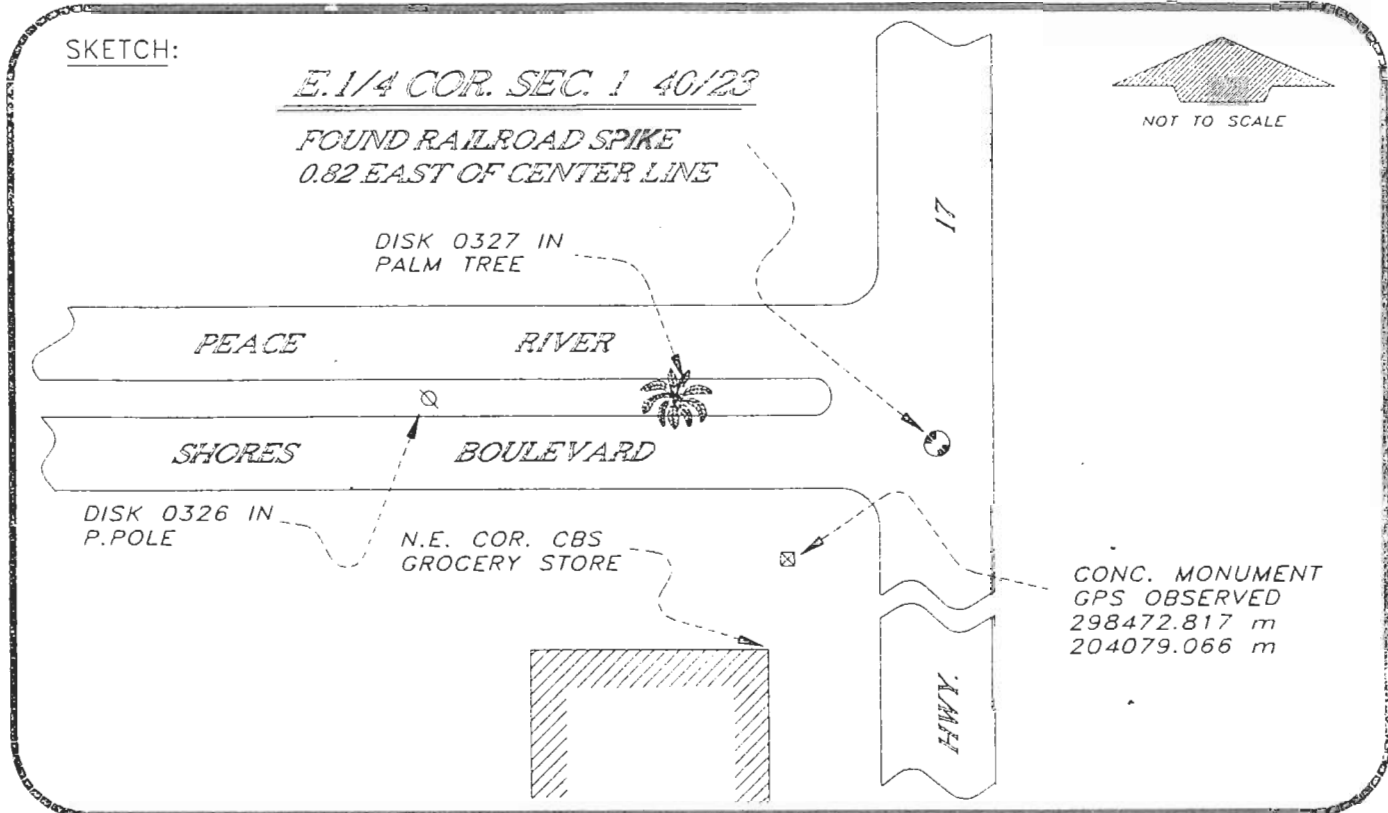
4023C25

DOC. #

SKETCH:

E. 1/4 COR. SEC. 1 40/23

FOUND RAILROAD SPIKE
0.82 EAST OF CENTER LINE



BASIS OF BEARING SOLAR OBSERVATION

REFER: FB 301/34

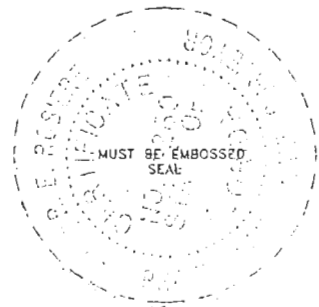
REFERENCE MEASUREMENTS

<u>Description</u>	<u>Bearing</u>	<u>Distance</u>
N.E. COR. GROCERY STORE	S 39°19'06" W	209.01'
DISK 0326 IN P. POLE	N 80°19'09" W	114.21'
DISK 0327 IN PALM TREE	N 78°14'19" W	58.83'
CONC. MON. GPS OBSER'VD	S 59°54'05" W	58.94'

SURVEYORS CERTIFICATE: I certify the monument and accessories indicated above were field located on OCTOBER 18, 19 93.

R. Rose PLS 4260
 SIGNATURE
11-16-93 DATE
 CHARLOTTE COUNTY SURVEY DEPT.
 FIRM OR AGENCY
7000 FLORIDA STREET ADDRESS
PUNTA GORDA, FLA. 33950
 CITY STATE

546



Completeness checked by: B. Hinton
 Accepted and filed: 12-1-93 Date
 B.L.M. - I.I.D. 0100CLO6 I.D.N.R. USE ONLY

SEND TO:
 Department of Environmental Protection
 Bureau of Survey and Mapping
 3900 Commonwealth Boulevard
 Mail Station 105
 Tallahassee, Florida 32399