

4023E05

DOC #

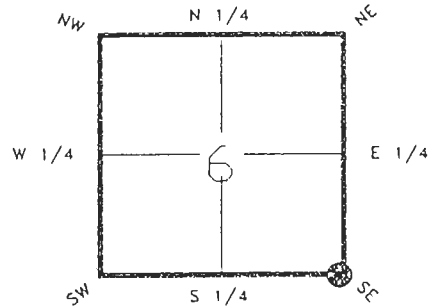
0045944

FLORIDA DEPARTMENT OF NATURAL RESOURCES
CERTIFIED CORNER RECORD

E-05

CORNER DESCRIPTION:

S.E. corner of Section 6
Twp 40 S., Rge 23 E.
Tallahassee Base Meridian,
CHARLOTTE County(s), Florida.



Depict corner with

MONUMENTATION DESCRIPTION:

Describe original monument and accessories, or subsequent restoration. Give sources of information. (If no attempt was made to search for the original monument and accessories, this information is not necessary.)

NONE FOUND

Description of corner evidence found:

FOUND CONCRETE MONUMENT (L.S. 1466)

RECEIVED

JUL 26 1993

SURVEY & MAPPING

State method(s) to determine corner location (lost corners only):

HORIZONTAL POSITION INFORMATION (if determined):

Latitude 27°01'02.49186"N Longitude 82°02'28.41643"W
Y(Northing) 297328.031(M) X(Easting) 195908.909(M) Zone FL W
Convergence -0°01'07.420' Scale factor 0.99994138

Coordinate determination (circle one): Field traverse GPS

Horizontal datum (circle one): NAD27 NAD83(1986) NAD83(1990) other (explain)

Order of accuracy as defined in "Standards and Specifications for Geodetic Control Networks" published by the Federal Geodetic Control Committee (circle one):

1st, 2nd, 3rd, class 1

or Minimum Technical Standards (Chapter 21HH-6, F.A.C.) ratio of closure for field data (example 1:10,000), . This does not specify an order of accuracy.

Control point(s) used for survey:

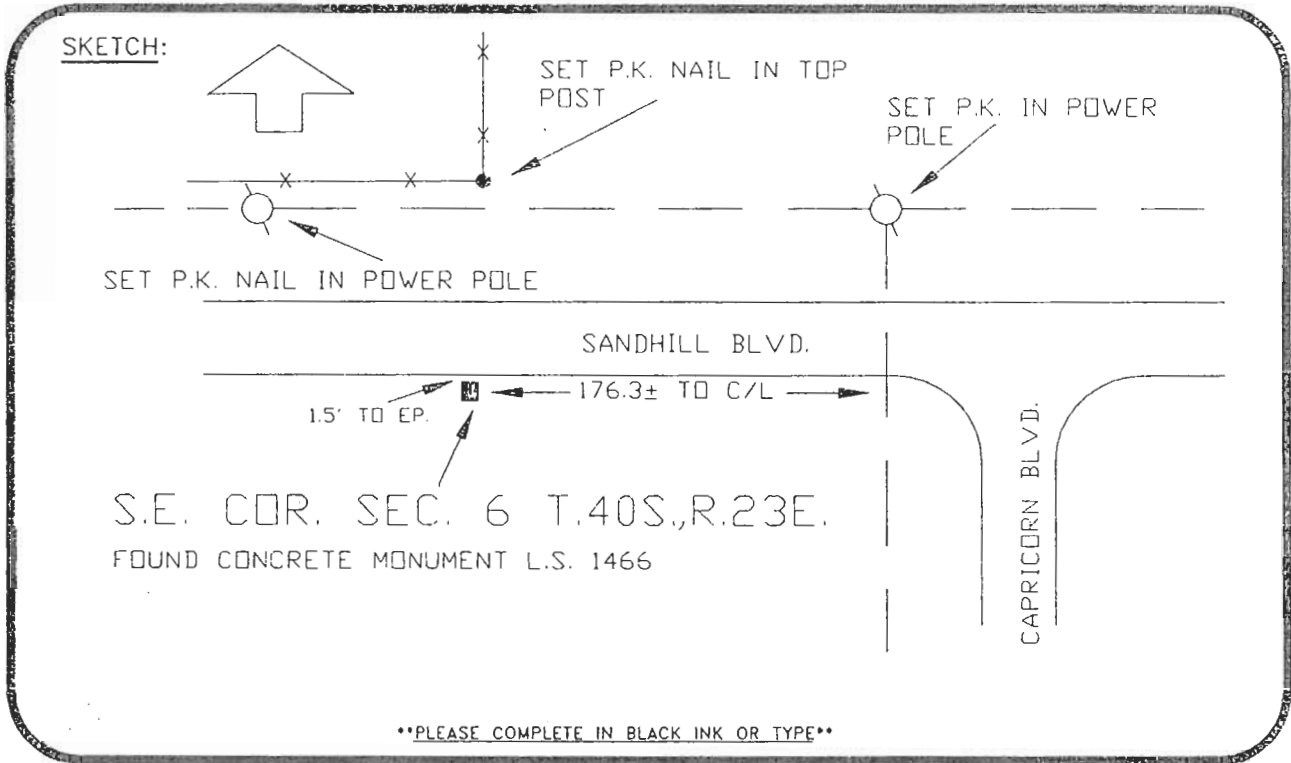
Comments:

PLEASE SEND ORIGINAL ONLY
PLEASE COMPLETE IN BLACK INK OR TYPE

DNR 53-001(16)
REV: 7/16/92
PAGE 1 OF 2

0045944

DOC. #



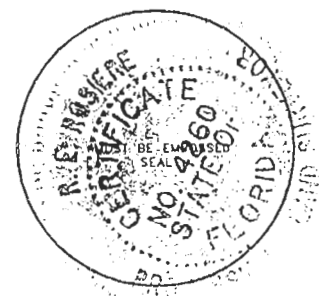
BASIS OF BEARING ASSUMED DATUM REFER: F.B. 251-09
 All bearings and distances must be from the corner to the witness. Indicate whether corner was found, set, or replaced and show north arrow.

REFERENCE MEASUREMENTS (at least three vicinity references must be given below even if they appear on the above sketch):

Description	Bearing	Distance
P.K. NAIL IN POWER POLE	N.48°55'36"W.	91.85'
P.K. NAIL IN TOP POST	N.03°32'56"E.	69.51'
P.K. NAIL IN POWER POLE	N.66°47'39"E.	148.09'
SURVEY MARKER POST	SOUTH	7.6'

SURVEYORS CERTIFICATE: I certify the monument and accessories indicated above were field located on JANUARY 22, 19 91.

[Signature] PLS 4260
 SIGNATURE
July 12, 1993
 DATE
 CHARLOTTE COUNTY SURVEY DEPT.
 FIRM OR AGENCY
 7000 FLORIDA STREET
 ADDRESS
 PUNTA GORDA, FLA. 33950
 CITY STATE



Completeness checked by: GR Green
 Accepted and filed: 8-93
 Date
 B.L.M. - I.D. 07060508 Q.N.R. USE ONLY

SEND TO:
 Department of Natural Resources
 Bureau of Survey and Mapping
 3900 Commonwealth Boulevard
 Mail Station 105
 Tallahassee, Florida 32399
 DNR 53-001(16)
 REV. 7/16/92
 PAGE 2 OF 2