

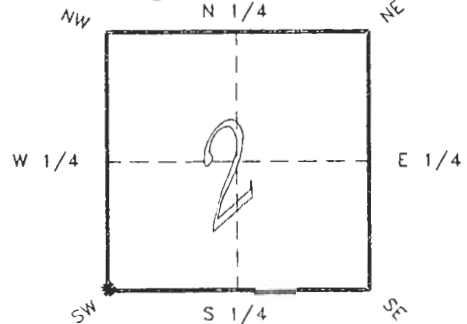
4023E17

FLORIDA DEPARTMENT OF NATURAL RESOURCES
CERTIFIED CORNER RECORD

E 17

CORNER DESCRIPTION:

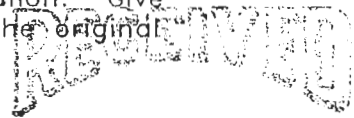
S.W. corner of Section 2,
Twp 40 S., Rge 23 E.,
Tallahassee Base Meridian,
CHARLOTTE County(s), Florida.



Depict corner with *

MONUMENTATION DESCRIPTION:

Describe original monument and accessories, or subsequent restoration. Give sources of information. (If no attempt was made to search for the original monument and accessories, this information is not necessary.)



OCT 04 1993

Description of corner evidence found:

LIGHTERWOOD POST WITH BRASS DISK & NAIL IN TOP
REPLACED WITH CONCRETE MONUMENT.

SURVEY & MAPPING

State method(s) to determine corner location (lost corners only):

HORIZONTAL POSITION INFORMATION (if determined):

Latitude 27°01'01.35446 N Longitude 81°59'31.36826" W
Y(Northing) 297292.382 m X(Easting) 200789.235 m Zone FLW
Convergence 0°00'13.006" Scale factor 0.99994118

Coordinate determination (circle one): Field traverse GPS

Horizontal datum (circle one): NAD27 NAD83(1986) NAD83(1990) other (explain)

Order of accuracy as defined in "Standards and Specifications for Geodetic Control Networks" published by the Federal Geodetic Control Committee (circle one):
1st, 2nd, 3rd, class 1

or Minimum Technical Standards (Chapter 21HH-6, F.A.C.) ratio of closure for field data (example 1:10,000), _____ . This does not specify an order of accuracy.

Control point(s) used for survey: CHARLOTTE COUNTY HORIZONTAL CONTROL NETWORK INCLUDES HAVOLINE 2, PLACIDA 2, W260, PUNTAPOINT, & FLGPS 58 AS B ORDER STATIONS.

Comments:

SKETCH:

S.W. COR. SEC. 2 40/23
 FOUND LIGHTER WOOD POST
 WITH DISK & NAIL IN TOP

REF. POINT
 CIR LS 2776

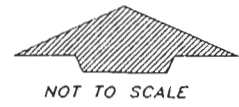
DRILL HOLE IN
 CONC. P. POLE

CONC. MON.
 LS 1466

CONC. MON.
 LB 2904

DISK 0512 IN
 6" OAK TREE

DISK 0511 IN
 12" PINE TREE



BASIS OF BEARING SOLAR OBSERVATION REFER FB 251/71


All bearings and distances must be from the corner to the witness. Indicate whether corner was found, set, or replaced and show north arrow.

SET SURVEY MARKER POST 3.0' N'LY

REFERENCE MEASUREMENTS: (at least three vicinity references must be given below even if they appear on the above sketch):

Description	Bearing	Distance
DRILL HOLE IN CONC. P. POLE	S 19°29'21" W	154.91'
DISK 0521 IN 6" OAK TREE	S 27°44'36" E	24.48'
DISK 0511 IN 12" PINE TREE	N 42°56'34" E	69.16'
CONC. MON. LS 1466	S 11°47'04" W	1.93'
CONC. MON. LB 2904	S 08°39'49" W	3.57'
REF. POINT CIR LS 2776	S 64°54'29" W	122.16'

SURVEYORS CERTIFICATE: I certify the monument and accessories indicated above were field located on JULY 9, 19 93.

 PLS 4260
 SIGNATURE

9-29-93
 DATE

CHARLOTTE COUNTY SURVEY DEPT.
 FIRM OR AGENCY

7000 FLORIDA STREET
 ADDRESS

PUNTA GORDA, FLA. 33950
 CITY STATE

546



SEND TO:

Department of Natural Resources
 Bureau of Survey and Mapping
 3900 Commonwealth Boulevard
 Mail Station 105
 Tallahassee, Florida 32399

DNR 53-001(16)
 REV. 7/16/92
 PAGE 2 OF 2

Completeness checked by: B. Hinton
 Accepted and filed: 10030211 11-1-93
 B.L.M. - I.D. 10030211 Date
 D.N.R. USE ONLY