

4023E22

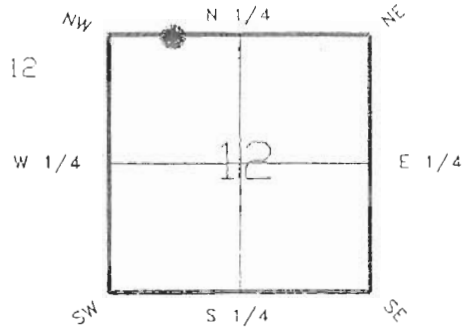
DOC. # 0047000

FLORIDA DEPARTMENT OF NATURAL RESOURCES  
CERTIFIED CORNER RECORD

E 22

CORNER DESCRIPTION:

N.E. corner of Section GOVT. LOT 1, SEC. 12  
Twp 40 S., Rge 23 E.,  
Tallahassee Base Meridian,  
CHARLOTTE County(s), Florida.



Depict corner with \*

MONUMENTATION DESCRIPTION:

Describe original monument and accessories, or subsequent restoration. Give sources of information. (If no attempt was made to search for the original monument and accessories, this information is not necessary.)

Description of corner evidence found:

CONCRETE MONUMENT (0.9' BELOW SURFACE)

State method(s) to determine corner location (lost corners only):

HORIZONTAL POSITION INFORMATION ( if determined ):

Latitude 27°01'14.46469" N Longitude 81°58'15.43630" W

Y(Northing) 297696.183 m X(Easting) 202882.208 m Zone FLW

Convergence 0°00'47.505" Scale factor 0.99994128

Coordinate determination (circle one): Field traverse  GPS

Horizontal datum (circle one): NAD27 NAD83(1986)  NAD83(1990) other (explain)

Order of accuracy as defined in "Standards and Specifications for Geodetic Control Networks" published by the Federal Geodetic Control Committee (circle one):  
1st,  2nd, 3rd, class 1

or Minimum Technical Standards (Chapter 21HH-6, F.A.C.) ratio of closure for field data (example 1:10,000), . This does not specify an order of accuracy.

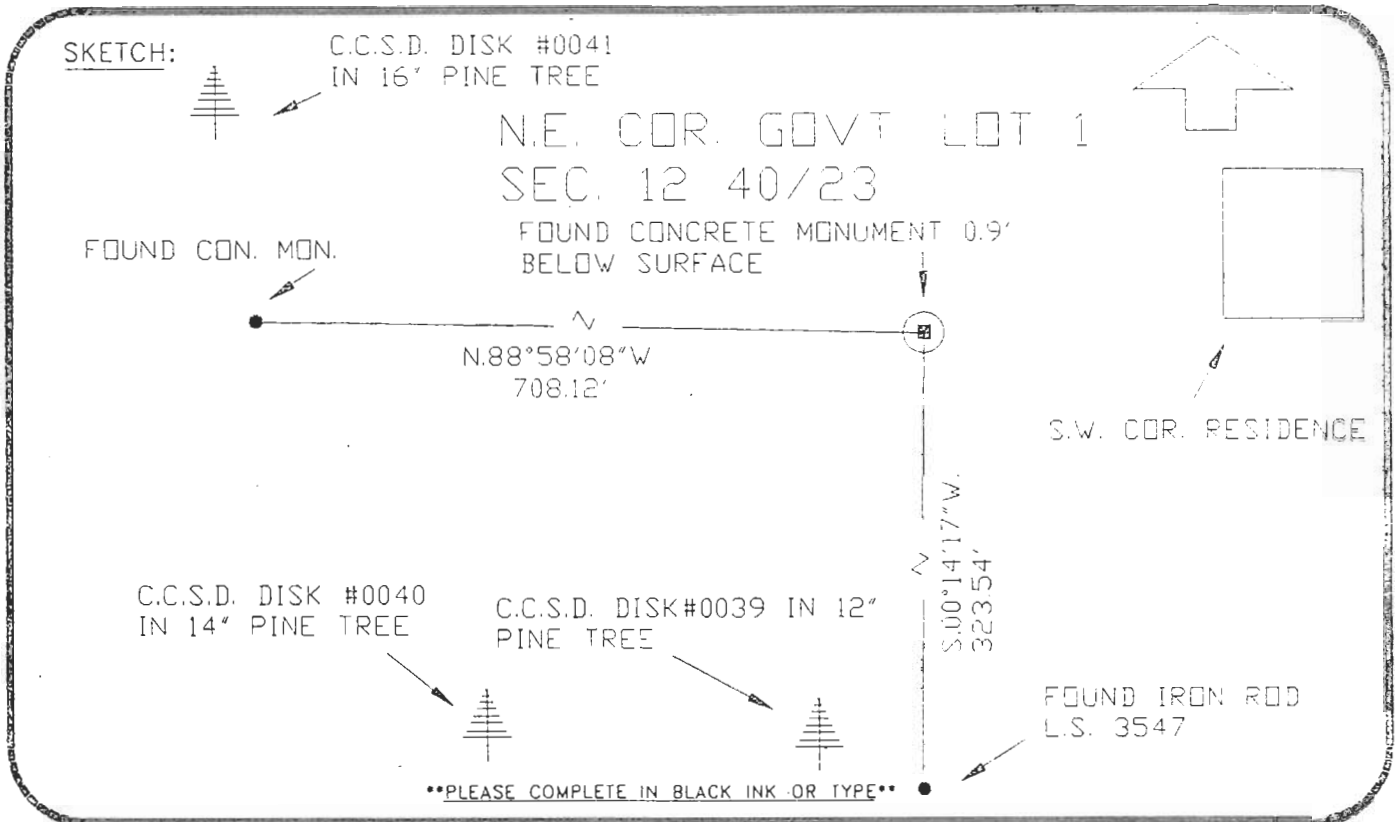
Control point(s) used for survey:

Comments:

4023E22

DOC. #

0047800



SET SURVEY MARKER POST 2.0' W. LY REFER: F.B. 251-69

All bearings and distances must be from the corner to the witness. Indicate whether corner was found, set, or replaced and show north arrow.

REFER: PEACE RIVER SHORES SUBDIVISION, UNIT 4, PLAT BOOK 4 PAGE 2  
REFERENCE MEASUREMENTS ( at least three vicinity references must be given below even if they appear on the above sketch ):

Description	Bearing	Distance
DISK #0041 IN 16" PINE TREE	N.75°07'43"W.	99.70'
DISK #0040 IN 14" PINE TREE	S.45°12'54"W.	82.01'
DISK #0039 IN 12" PINE TREE	S.13°09'22"W.	61.76'
S.W. CORNER RESIDENCE	N.87°07'04"E.	40.22'

SURVEYORS CERTIFICATE: I certify the monument and accessories indicated above were field located on Feb. 11, 19 92.

[Signature] PLS 4260  
SIGNATURE  
10-20-93  
DATE

CHARLOTTE COUNTY SURVEY DEPT.  
FIRM OR AGENCY  
7000 FLORIDA STREET  
ADDRESS  
PUNTA GORDA, FLA. 33950  
CITY STATE

546



Completeness checked by: B. Hinton  
Accepted and filed: 12-1-93 Date  
B.L.M. - I.D. 12W0001 D.N.R. USE ONLY

SEND TO:  
Department of Natural Resources  
Bureau of Survey and Mapping  
3900 Commonwealth Boulevard  
Mail Station 105  
Tallahassee, Florida 32399  
DNR 53-001(16)  
REV. 7/16/92  
PAGE 2 OF 2