

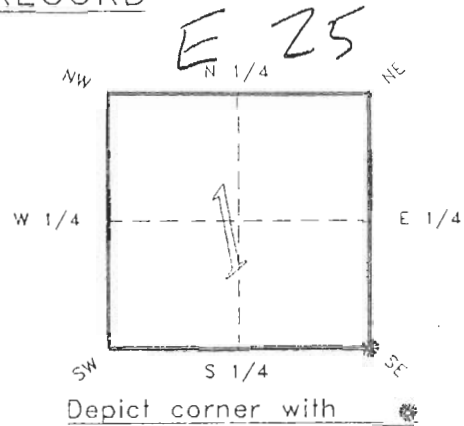
4023E25

DOC. # 0046999

FLORIDA DEPARTMENT OF ENVIRONMENTAL PROTECTION
CERTIFIED CORNER RECORD

CORNER DESCRIPTION:

S.E. corner of Section 1 ,
Twp 40 S. , Rge 23 E. ,
Tallahassee Base Meridian,
CHARLOTTE County(s), Florida.



MONUMENTATION DESCRIPTION:

Describe original monument and accessories, or subsequent restoration. Give sources of information. (If no attempt was made to search for the original monument and accessories, this information is not necessary.)

Description of corner evidence found:

80d NAIL 3.8' EAST OF CENTER LINE HWY. 17

State method(s) to determine corner location (lost corners only):

HORIZONTAL POSITION INFORMATION (if determined):

Latitude 27°01'13.75791"N Longitude 81°57'31.64604"W
Y(Northing) 297674.776 m X(Easting) 204089.257 m Zone FLW
Convergence 0°01'07.399" Scale factor 0.99994138

Coordinate determination (circle one): Field traverse GPS

Horizontal datum (circle one): NAD27 NAD83(1986) NAD83(1990) other (explain)

Order of accuracy as defined in "Standards and Specifications for Geodetic Control Networks" published by the Federal Geodetic Control Committee (circle one):
1st, 2nd, 3rd, class 1 ,

or Minimum Technical Standards (Chapter 21HH-6, F.A.C.) ratio of closure for field data (example 1:10,000), _____ . This does not specify an order of accuracy.

Control point(s) used for survey: CHARLOTTE COUNTY HORIZONTAL CONTROL NETWORK INCLUDES HAVOLINE 2, PLACIDA 2, W260, PUNTAPOINT, & FLGPS 5B AS B ORDER STATIONS.

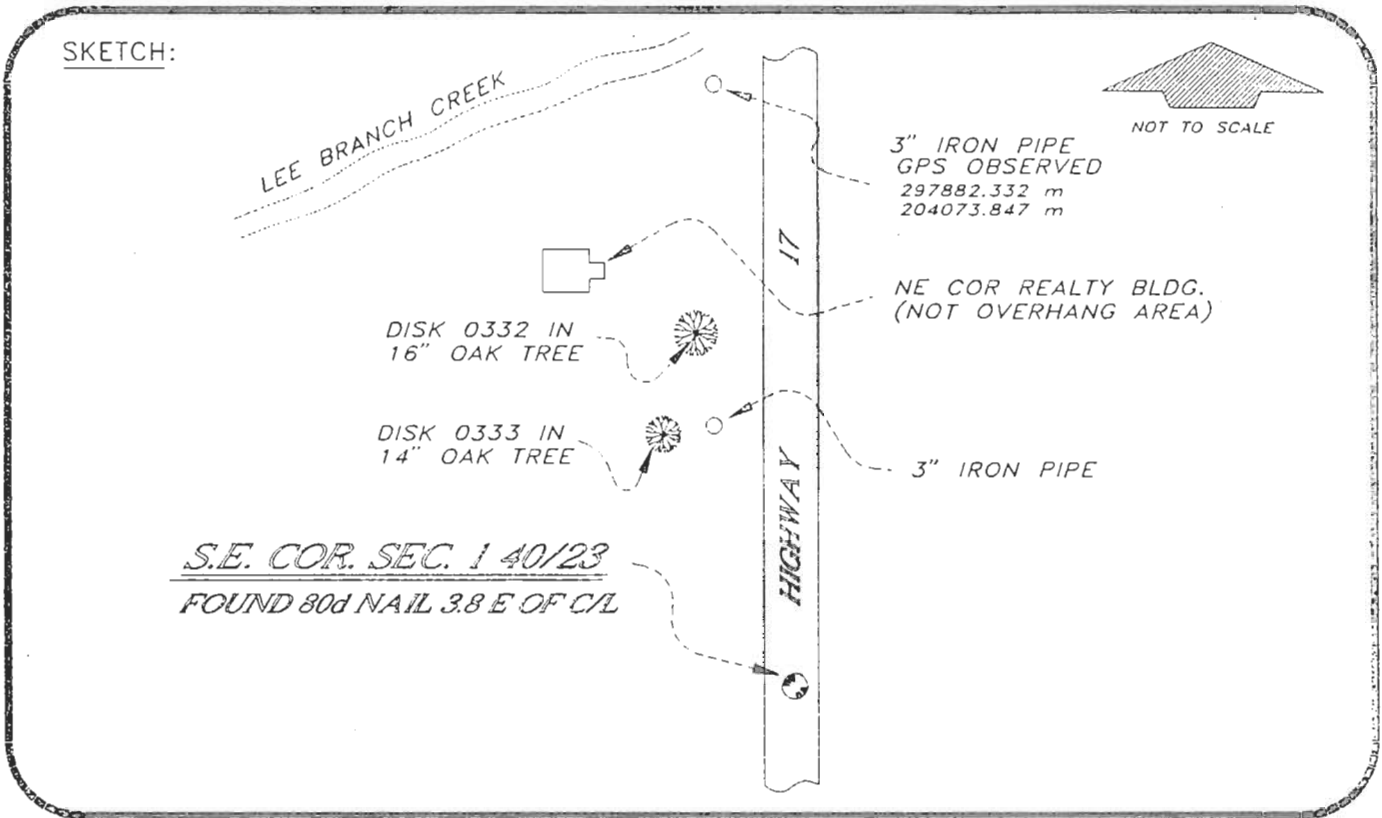
Comments:

4023E25

DOC. #

0048999

SKETCH:



S.E. COR. SEC. 1 40/23
 FOUND 80d NAIL 3.8 E OF C/L

BASIS OF BEARING SOLAR OBSERVATION

REFER: FB 301/36

REFERENCE MEASUREMENTS

Description	Bearing	Distance
DISK 0332 IN 16" OAK TREE	N 09°49'46" W	410.49'
N.E. COR. REALTY BUILDING	N 17°33'24" W	463.86'
DISK 0333 IN 14" OAK TREE	N 14°28'46" W	316.70'
3" IRON PIPE	N 09°36'20" W	313.40'
3' IRON PIPE GPS OBSERVED	N 04°13'37" W	682.90' (208.148 m)
	(N 04°14'44" W GRID)	

SURVEYORS CERTIFICATE: I certify the monument and accessories indicated above were field located on NOVEMBER 11, 19 93.

R. P. Ross
 SIGNATURE

PLS 4260

11-16-93
DATE

CHARLOTTE COUNTY SURVEY DEPT.

FIRM OR AGENCY

7000 FLORIDA STREET

ADDRESS

PUNTA GORDA, FLA. 33950

CITY

STATE

546



Completeness checked by: B. Benton
 Accepted and filed: 127-93
 B.L.M. - I.D. 12010607 Date
 D.N.R. USE ONLY

SEND TO:

Department of Environmental Protection
 Bureau of Survey and Mapping
 3900 Commonwealth Boulevard
 Mail Station 105
 Tallahassee, Florida 32399