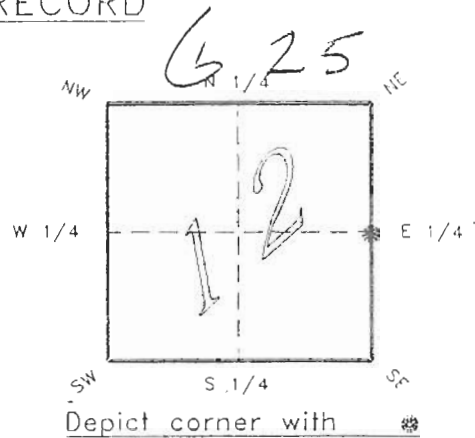


4023G25

FLORIDA DEPARTMENT OF ENVIRONMENTAL PROTECTION
CERTIFIED CORNER RECORD

CORNER DESCRIPTION:

E. 1/4 corner of Section 12 ,
Twp 40 S. , Rge 23 E ,
Tallahassee Base Meridian,
CHARLOTTE County(s), Florida.



MONUMENTATION DESCRIPTION:

Describe original monument and accessories, or subsequent restoration. Give sources of information. (If no attempt was made to search for the original monument and accessories, this information is not necessary.)

Description of corner evidence found:

80d NAIL 4.0' EAST OF CENTER HIGHWAY 17

State method(s) to determine corner location (lost corners only):

HORIZONTAL POSITION INFORMATION (if determined):

Latitude 27°00'47.54468"N Longitude 81°57'31.86267"W
Y(Northing) 296867.999 m X(Easting) 204083.548 m Zone FLW
Convergence 0°01'07.283" Scale factor 0.99994138

Coordinate determination (circle one): Field traverse GPS

Horizontal datum (circle one): NAD27 NAD83(1986) NAD83(1990) other (explain)

Order of accuracy as defined in "Standards and Specifications for Geodetic Control Networks" published by the Federal Geodetic Control Committee (circle one):
1st, 2nd, 3rd, class 1 ,

or Minimum Technical Standards (Chapter 21HH-6, F.A.C.) ratio of closure for field data (example 1:10,000), _____ . This does not specify an order of accuracy.

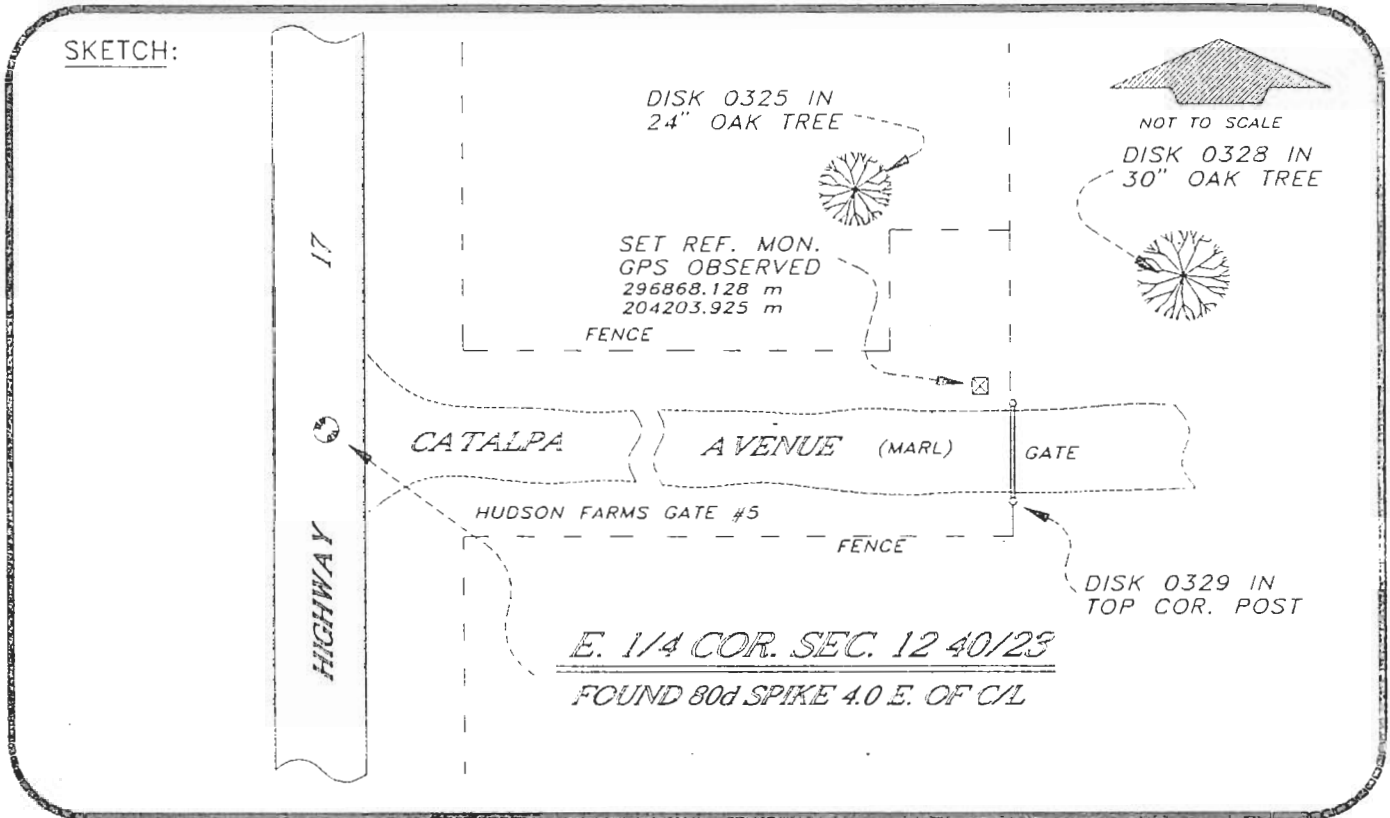
Control point(s) used for survey: CHARLOTTE COUNTY HORIZONTAL CONTROL NETWORK INCLUDES HAVOLINE 2, PLACIDA 2, W260, PUNTAPORI, & FLGPS 58 AS B ORDER STATIONS.

Comments:

0047002

4023G25

DOC. #



BASIS OF BEARING SOLAR OBSERVATION

REFER: FB 301/37

REFERENCE MEASUREMENTS

Description	Bearing	Distance
DISK 0328 IN 30" OAK TREE	N 87°19'18" E	464.35'
DISK 0325 IN 24" OAK TREE	N 78°46'22" E	331.72'
DISK 0329 IN TOP COR. POST	S 89°32'30" E	403.81'
SET REF. MON. GPS OBSERVED	N 89°57'26" E (S 89°56'17" W GRID)	394.96' (120.384 m)

SURVEYORS CERTIFICATE: I certify the monument and accessories indicated above were field located on OCTOBER 19, 19 93.

R. Rose
SIGNATURE PLS 4260

11-16-93
DATE

CHARLOTTE COUNTY SURVEY DEPT.
FIRM OR AGENCY

7000 FLORIDA STREET
ADDRESS

PUNTA GORDA, FLA. 33950
CITY STATE

546



Completeness checked by: B. Jinton
 Accepted and filed: 12-1-93 Date
 B.L.M. - I.D. 1200CLOT D.N.R. USE ONLY

SEND TO:
Department of Environmental Protection
Bureau of Survey and Mapping
3900 Commonwealth Boulevard
Mail Station 105
Tallahassee, Florida 32399