

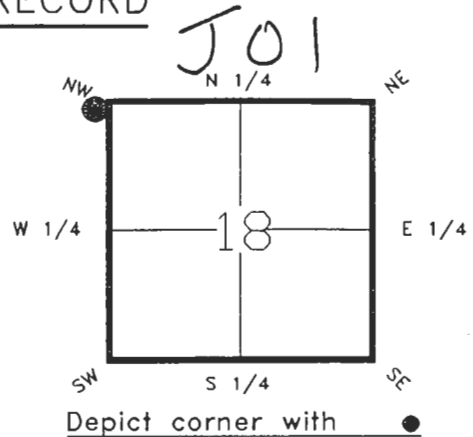
4023J01

DOC. # **0048020**

FLORIDA DEPARTMENT OF NATURAL RESOURCES  
CERTIFIED CORNER RECORD

CORNER DESCRIPTION:

N.W. corner of Section 18 ,  
Twp 40 S. , Rge 23 E. ,  
Tallahassee Base Meridian,  
CHARLOTTE County(s), Florida.



MONUMENTATION DESCRIPTION:

Describe original monument and accessories, or subsequent restoration. Give sources of information. (If no attempt was made to search for the original monument and accessories, this information is not necessary.)

NONE FOUND

Description of corner evidence found:

ROUND CONCRETE MONUMENT

State method(s) to determine corner location (lost corners only):

HORIZONTAL POSITION INFORMATION ( if determined ):

Latitude 27°00'10.06513" N Longitude 82°03'27.50307" W

Y(Northing) 295715.132 m X(Easting) 194279.451 m Zone FLW

Convergence -0°01'34.213" Scale factor -0°01'34.213"

Coordinate determination (circle one): Field traverse GPS

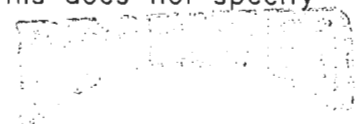
Horizontal datum (circle one): NAD27 NAD83(1986) NAD83(1990) other (explain)

Order of accuracy as defined in "Standards and Specifications for Geodetic Control Networks" published by the Federal Geodetic Control Committee (circle one):  
1st, 2nd, 3rd, class 1 ,

or Minimum Technical Standards (Chapter 21HH-6, F.A.C.) ratio of closure for field data (example 1:10,000), \_\_\_\_\_ . This does not specify an order of accuracy.

Control point(s) used for survey:

Comments:



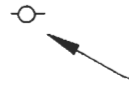
C. J. JENY & MAPPING

4023J01

DOC. #

0048020

SKETCH:



P.K. IN POWER POLE

N.W. COR. SEC. 18  
40/23  
ROUND CONCRETE MONUMENT

AVACADO AVE.

LOVELAND BLVD.

RAILROAD SPIKE IN 11' PINE TREE



POWER POLE WITH LIGHT

RAILROAD SPIKE IN 10' PINE TREE



\*\*PLEASE COMPLETE IN BLACK INK OR TYPE\*\*

BASIS OF BEARING: SOLAR OBSERVATION REFER: F.B. 276-22  
All bearings and distances must be from the corner to the witness. Indicate whether corner was found, set, or replaced and show north arrow.

REFERENCE MEASUREMENTS ( at least three vicinity references must be given below even if they appear on the above sketch ):

Description	Bearing	Distance
P.K. NAIL IN POWER POLE	N.12°12'42"E.	156.50'
RAILROAD SPIKE IN 11' PINE TREE	S.88°12'49"E.	68.91'
RAILROAD SPIKE IN 10' PINE TREE	S.21°11'13"E.	129.43'
SET SURVEY MARKER POST	E.'LY	3.0'

SURVEYORS CERTIFICATE: I certify the monument and accessories indicated above were field located on May 7, 19 93.

PLS 4260

SIGNATURE

3-1-94

DATE

CHARLOTTE COUNTY SURVEY DEPT.

FIRM OR AGENCY

7000 FLORIDA STREET

ADDRESS

PUNTA GORDA,

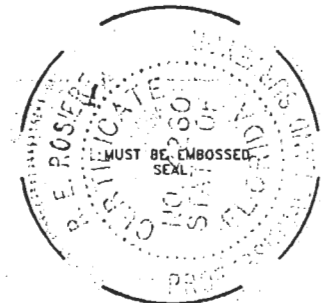
CITY

FLA.

STATE

33950

547



SEND TO:

Department of Natural Resources  
Bureau of Survey and Mapping  
3900 Commonwealth Boulevard  
Mail Station 105  
Tallahassee, Florida 32399

DNR 53-001(16)  
REV. 7/16/92  
PAGE 2 OF 2

Completeness checked by:

B. Linton

Accepted and filed:

4-1-94

Date

B.L.M. - I.D.

13120718

D.N.R. USE ONLY